

October 2008

# EAGLE MOUNTAIN®



## Can Technology Be Green?

### *What we do here, and why it matters*

My name is Doug Mossbrook and I'm president here at Eagle Mountain. I started this company in 1989 because I believed that energy efficiency should be a way of life.

My customers, then as now, were people who appreciated craftsmanship, and sought out the best things for their homes that they could find. Energy-efficient windows, better insulation, *things that made prudent use of resources*. But when it came time to select the heating and cooling systems for their homes, the choices were scarce. I was dismayed at how few options existed for someone who cared about keeping their family safe and comfortable in a way that could also help out the environment. A way to be a good steward of the planet without sacrificing quality or comfort for their families.

We saw lots of effort go into recycling, and in lowering emissions in our cars, but somehow, I didn't feel technology kept pace with heating and cooling systems. These frustrations, and the desires of people who told me they felt the same way, led me to start Eagle Mountain, Inc.. In our catalog, and on our website, you'll see the results of our efforts, the desire to supply a *real option* in heating and cooling systems to people who care about finding environmentally responsible products for their homes and businesses.

I invite you to take a look at our products and services. Our system designers and sales staff are knowledgeable, dedicated people who understand the needs and requirements of our customers. We all use our products as well, just as I do for my own family, and right here in our offices and warehouse.

It's a pleasure to see our efforts starting to pay off. Many state and municipal governments now offer incentives to customers who purchase and install systems like the ones we sell. In fact, New York State, where I live and work, has just launched a new Energy Star initiative, with some important advantages for consumers. If you have questions, please call us here at Eagle Mountain, Inc... and thanks again for considering us!

Sincerely,

*Douglas Paul Mossbrook*

**Complete Radiant System Packages**



**Imagine the pleasure** of stepping onto soothing warm floors in your home when the temperatures outside are uninviting. We invite you to throw away your slippers and begin to enjoy the incomparable luxury of radiant heated floors anywhere in your home. We can assist you making the most appropriate choices for your project. Our 15 years of radiant design and installation experience have given us the ability to build a high performance radiant system for your home,

**How do I get a cost estimate?**

Just send us a blueprint! We take your blueprint and calculate the heat loss, determine the number of zones, and manifold locations. We select the system components based on your heat loss, fuel type, number of zones, and your budget. We price the package including freight costs, delivered right to your project!

**How is a Radiantmax system installed?**

The Radiantmax system is designed to be installed by a person with good mechanical abilities. There are also some electrical connections to be made which should be done by an electrician. We provide all the necessary instructions and drawings to install the system.

**How do I control the different zones?**

Radiantmax manufactures zone control panels specifically for your application. All necessary pumps, zone valves, fittings, and electric controls are built right onto a panel that easily mounts next to the boiler. All you need to do is run two Kitec lines to the boiler, and two Kitec lines to each manifold location. The fittings tighten with a wrench! Our systems are designed to make filling and purging simple. Our electric controls utilize push-in wire connections that makes power and thermostat connections easy.

**What if I need help during the installation?**

Radiantmax offers toll-free technical assistance for any questions or potential complications which may occur on the job-site. We continue to provide free technical support to the original purchaser for the life of your system.



**"Radiantmax made the process as easy as it can be. I sent the prints, talked with Mark for about 15 minutes on the phone, and they designed an awesome system for my house. I installed the whole system myself and saved lots of money."**  
Bob Harris, Homeowner, Virginia

**"I don't think there is another company who can match their expertise. I send all my clients to them"**  
George Baker, Architect, New York

**"I found the folks at Radiantmax to be very conscious of our project budget while giving us top notch equipment. I would give them a five star rating!"**  
Shelley Walters, Builder, California



**Same Day Shipping if Ordered By 12pm EST**

**Radiant Slab Packages, Underfloor Packages**

**Radiant Slab Packages** include all the parts you need to install radiant tubing in a slab. We include the following components in every package:

- 1/2" BPEX Tubing
- Copper Manifold Set
- Split Ring Hanger Brackets
- Wire Ties
- Tubing Cutter
- Pressure Test Kit
- Instructions



Radiant Slab Packages		
Item Code	Product Description	Radiantmax Price
RS1	Radiant Slab Package up to 290 Square Feet	\$189.00
RS2	Radiant Slab Package up to 580 Square Feet	\$459.00
RS3	Radiant Slab Package up to 840 Square Feet	\$659.00
RS4	Radiant Slab Package up to 1160 Square Feet	\$804.00
RS5	Radiant Slab Package up to 1450 Square Feet	\$972.00
RS6	Radiant Slab Package up to 1740 Square Feet	\$1134.00

**Radiantmax Underfloor Packages** are designed for the installation of a radiant system under the subfloor. We include all the parts necessary to install a **complete** system, including Radiantmax aluminum heat transfer plates and Astro-Foil reflective insulation.



Don't be fooled by our competitors who try and sell larger diameter tubing systems with one tube per bay. They cost less but they just don't work well.

We use 1/2" BPEX tubing on 8" centers, and we **highly** recommend using aluminum plates. They increase heat transfer by over 30% which means lower water temperatures and lower heating bills! Insulation is also very important. We recommend adding insulation under the Astro-Foil to create a large R-Value differential between the material below the radiant tubing and the floor goods above the system.

**Every Package Includes:**

- 1/2" BPEX Tubing
- Copper Manifold Set
- Split Ring Hanger Brackets
- Tubing Cutter
- Aluminum Plates
- Reflective Insulation
- Instructions
- Tubing Diagram

Underfloor Packages		
Item Code	Product Description	Radiantmax Price
UFP2	Underfloor Package up to 380 Square Feet	\$1272.00
UFP3	Underfloor Package up to 560 Square Feet	\$1843.00
UFP4	Underfloor Package up to 750 Square Feet	\$2414.00
UFP5	Underfloor Package up to 945 Square Feet	\$3029.00
UFP6	Underfloor Package up to 1130 Square Feet	\$3540.00
<b>Call for larger area pricing!</b>		



**Radiantmax Overfloor Packages** are designed for the installation of a radiant system over the subfloor. We include all the parts necessary including the Radiantmax aluminum heat transfer plates. We don't include the 5/8" particle board. Why pay us to cut up plywood and ship it to you when you can buy it at Home Depot or Lowes. Rip the 4 x 8 sheets into 7" strips and use the plates as an alignment guide as you nail the strips and the plates down, it's that easy!



Our competition sells systems with different types of plywood products included, some with thin aluminum foil coatings, and most with smaller 3/8" diameter tubing. We use 1/2" BPEX tubing on 8" centers, and we **highly** recommend using our aluminum plates. They increase heat transfer by over 30% which means lower water temperatures, shorter boiler running time, and lower heating bills! Our larger tube diameter means a higher output per square foot is possible when needed. Having to provide supplemental heat is an expensive option.

<b>Overfloor Packages</b>		
<b>Item Code</b>	<b>Product Description</b>	<b>Radiantmax Price</b>
OFP2	Overfloor Package up to 380 Square Feet	\$992.00
OFP3	Overfloor Package up to 560 Square Feet	\$1403.00
OFP4	Overfloor Package up to 750 Square Feet	\$1839.00
OFP5	Overfloor Package up to 945 Square Feet	\$2339.00
OFP6	Overfloor Package up to 1130 Square Feet	\$2755.00
<b>Call for larger area pricing!</b>		

**Every Package Includes:**

- 1/2" BPEX Tubing
- Copper Manifold Set
- Split Ring Hanger Brackets
  - Tubing Cutter
  - Aluminum Plates
  - Instructions
  - Tubing Diagram

These packages are designed to provide enough material to do a typical floor area up to the sizes shown. Some projects may use more or less of the tubing and plates than we have included. If you have any questions regarding the specific material quantities for your project, we'd be glad to help.



**Same Day Shipping if Ordered By 12pm EST**

**Baxi Boilers**

**All-new, ultra-compact, high-efficiency boiler and water heater**

**Luna 1.310Fi & 310Fi**

***BAXI Boiler!***



With a reputation built up over many years, the **Baxi** name has become synonymous with design innovation, quality and reliability. Today millions of people benefit from energy efficient, environmentally friendly homes thanks to Baxi Products. The company harnesses latest technology and world class manufacturing skills to build market-leading products designed to meet customers' needs. When you choose a Baxi product you are buying home comfort with confidence.



BAXI direct vent wall hung boilers are non-condensing boilers with electronic flame modulation. Packaged with vent kit, circulator, expansion tank, and air eliminator. Available in both natural gas or propane (LP) models.

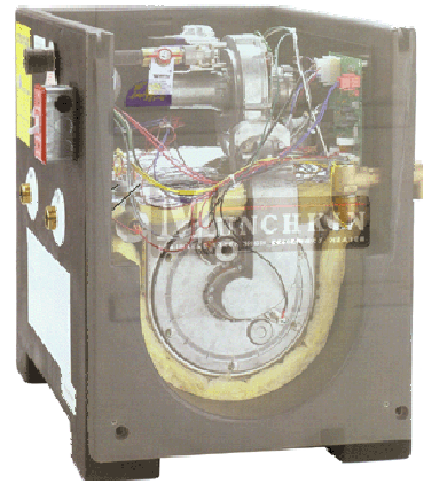
<b>Baxi Specifications</b>				
MODEL	LUNA 1.3Fi Propane	LUNA 310Fi Propane	LUNA 1.3Fi Nat Gas	LUNA 310Fi Nat Gas
FUNCTION	Comfort Heating	Comfort Heating Domestic Hot Water	Comfort Heating	Comfort Heating Domestic Hot Water
DHW OUTPUT TYPE	N/A	Up to 3.3 gal/Min	N/A	Up to 3.3 gal/Min
FLUE	Direct-Vent	Direct-Vent	Direct-Vent	Direct-Vent
BTU/HR INPUT	31730 to 95592	35486-105776	31730 to 95592	35486-105776
DIMENSIONS (Inches)	35.43 x17.71 x 13.97 in.	35.43 x17.71 x 13.97 in.	35.43 x17.71 x 13.97 in.	35.43 x17.71 x 13.97 in.
SHIPPING WEIGHT	80 lbs.	86 lbs.	80 lbs.	86 lbs.
RADIANTMAX PRICE	\$2664.32	\$3125.79	\$2551.73	\$ 3042.47

<b>Accessories</b>		
Item	Description	Radiantmax Price
B7610	Horizontal 1 Meter Pipe Extension for Luna	\$55.26
B6810	Coaxial 90 Elbow	\$40.85
B7810	Coaxial 45 Elbow	\$36.61
B0710	Vertical Coaxial Chimney Terminal	\$470.00
B0810	Vertical 15-35 Degree Roof Collar	\$70.74
B7910	Flue Connection for Two Pipe System	\$64.00

**Munchkin Boilers**



**Munchkin boilers** are one of the most compact and efficient heaters available on the market today. Each Munchkin boiler will modulate its firing rate to match the energy needs of the living space. This feature provides additional savings versus traditional single firing heaters. With stainless steel construction, you can be assured that you are buying the highest quality appliance. Proven European technology, manufactured in the USA.



**Features and Benefits**

**Fully modulating for ultra high efficiency (92% AFUE)**  
Lowest possible operating cost. Rapid return on investment.

**Consists of Stainless Steel Construction**  
Highest quality material available for maximum reliability.

**Compact, Lightweight Design**  
Installs virtually anywhere - zero clearance to combustibles. It's lightweight design can be installed by one person and shipped UPS.

**Direct vent with Standard Schedule 40 PVC Plastic Pipe**  
Less expensive to install. No chimney required!

**Quiet Operation**

**State-of-the-art control**  
Self-diagnostic microprocessor control simplifies service.

**Reliable field-proven spark ignition**  
Constant dependable operation.

**Sealed Combustion**

**Environmentally Friendly**  
Low emissions to environment.

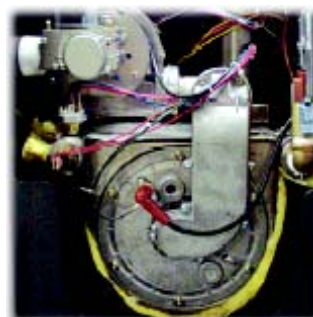
**Modular Component Construction**  
Easily maintained

**12 year Limited Warranty**  
Assurance of quality.

**Operates at low supply temperature**

**Munchkin Boilers Add**  
Natural or Add \$15 for LP

Item	Description	Radiantmax Price
M80	Munchkin Boiler, 74,000 Btu's	\$ 2574.00
M140	Munchkin Boiler, 129,000 Btu's	\$ 3620.00
M199	Munchkin Boiler, 183,000 Btu's	\$ 4329.00



**Same Day Shipping if Ordered By 12pm EST**

**Knight Boilers**



**LOCHINVAR BOILERS**

For more than 80 years, Lochinvar has played a legendary role in commercial water heating. Now we're bringing that proven performance to the condensing market with the KNIGHT—today's most advanced fully modulating high-efficiency condensing boiler.

The KNIGHT is an installer's dream: lightweight and compact, with key components that are easy to access. The KNIGHT offers PVC venting versatility, rugged reliability, seven models with inputs ranging from 80,000 to 500,000 Btu/hr, and 93% DOE AFUE. And you'll love the SMART SYSTEM<sup>®</sup> control, which includes a service indicator, contractor accessible password protection, and a 2-line display with simple fault descriptions, not codes. Best of all, the KNIGHT offers more standard features than any other heating boiler available today—including outdoor reset and a boiler circulating pump supplied with every KB 080-285 unit. Plus every KNIGHT is backed by an outstanding 12-year warranty.



**FEATURES**

- Stainless steel heat exchanger
- Fully modulating burner w/5:1 turndown
- PVC venting - up to 100 ft.
- Boiler circulating pump included
- Direct vent, sealed combustion

Knight Boilers					
Model	Input BTUH	DOE Capacity	Shipping Wt.	A.F.U.E. %	Radiantmax Price
KBN080	16,000 - 80,000	73,000	125 lbs	93	\$ 4027.37
KBN105	21,000 - 105,000	95,000	129 lbs	93	\$ 4448.39
KBN150	30,000 - 150,000	136,000	157 lbs	93	\$5067.08
KBN210	42,000 - 210,000	191,000	172 lbs	93	\$ 5720.35
KBN285	57,000 - 285,000	259,000	224 lbs	93	\$ 7910.45
KBN399	79,000 - 399,000	360,000	285 lbs	90.3	\$ 11312.88
KBN500	100,000 - 500,000	392,000	305 lbs	90.3	\$ 14384.60



**Indirect Hot Water Tanks**

**Coilex Stainless Steel Indirect Water Heater** Delivers all the hot water that's needed, quickly and efficiently - with a lifetime warranty\*!

The Coilex indirect heater is an affordable, efficient and trouble-free way to ensure a continuous supply of domestic hot water for all your household needs.

Our new Coilex indirect heater series uses energy from any hydronic home heating system, including low mass boilers, to heat an abundant source of hot water. This results in considerable energy savings over other hot water heating systems. And, it gives the user a constant supply of hot water.

The Coilex indirect heaters are ideal for a variety of uses, including hydronic radiant floor heat, solar heat and steam applications. They provide that extra hot water needed for whirlpools, households with multiple bathrooms and appliances, plus other high-volume hot water requirements. With the new Coilex indirect water heater, everyone can use the hot water without fear of running out and consuming additional energy. We are so sure of our Coilex indirect heater that it comes with a limited lifetime



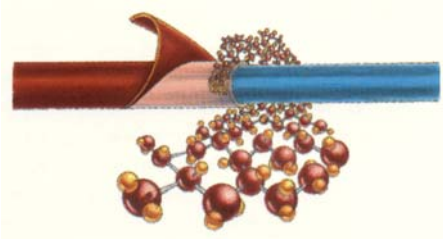
<b>Coilex Specifications</b>							
<b>CHARACTERISTICS</b>	<b>EX1-30</b>	<b>EX1-40</b>	<b>EX1-40L</b>	<b>EX1-50</b>	<b>EX1-60</b>	<b>EX1-80</b>	<b>EX1-115</b>
<b>Pump Capacity GPM</b>	5	5	5	8	10	13	17
<b>Loss in Feet of Head</b>	1.4	1.4	1.4	2.5	3.5	5.9	13
<b>Capacity - gallons</b>	30	40	40	50	60	80	115
<b>Boiler Output (MBH)</b>	75	85	85	100	125	175	225
<b>Output* - First Hour (Gal.)</b>	112	145	145	170	212	285	390
<b>Output* - Continuous (Gal.)</b>	91	115	115	135	167	233	300
<b>Connections (inch)</b>							
Domestic MPT	3/4"	3/4"	3/4"	3/4"	3/4"	1"	1 1/2"
Boiler MPT	1"	1"	1"	1"	1"	1"	1"
Recirculation	-	-	-	-	-	3/4"	3/4"
<b>Dimensions (inch)</b>							
Diameter	19.3	19.3	23.3	23.3	23.3	23.3	27.6
Height	46.6	59.7	42.4	50.4	58.4	74.4	76
<b>Shipping Weight</b>	65	80	80	95	110	140	180
<b>Radiantmax Price</b>	\$1708.00	\$1748.00	\$1879.20	\$2232.80	\$2304.80	\$2836.00	\$4184.80

Test are based on 90° rise with incoming water at 50°F and boiler temperature at 180°F. These outputs may vary depending on boiler size, usage parameters and conditions. L designates Low-Boy.



**Same Day Shipping if Ordered By 12pm EST**

At Radiantmax, we carry two different types of tubing. The first type is called BPEX; the second type is PEX-AL-PEX. All of our tubing meets or exceeds the ASTM F-876, and the German DIN 4726 oxygen permeation standard.



**BPEX** is cross-linked polyethylene pipe with an oxygen diffusion barrier. The barrier prevents large amounts of oxygen from entering through the walls of the tubing and causing air pockets or increasing oxidation, (rusting), of the systems iron parts. Cross-linking creates bonds between individual molecular strands, greatly enhancing the tube's temperature and chemical

**PE** – Polyethylene  
**PEX** – Cross-linked polyethylene  
**AL** - Aluminum

BPEX Tubing		
ID#	Description	Radiantmax Price
25000	3/8" x 600' BPEX	\$ 235.25
25010	1/2" x 900' BPEX	\$ 360.00
25012	1/2" x 300' BPEX	\$ 120.00

**Kitec Multi-Purpose Composite Pipe** is cross-linked polyethylene composite pipe named Kitec XPA, manufactured by IPEX Inc. Kitec is made from an aluminum tube laminated between two layers of cross-linked polyethylene. The result is a multipurpose pipe that is shapeable, and can be used for a variety of applications beyond metal and plastic alone. This pipe can be used for radiant heating, hot water baseboard hook-up, snow-melting, hot and cold water distribution, municipal water service, and compressed air. The aluminum tube provides a complete oxygen barrier and prevents permeation. Kitec will not conduct electricity or create static electricity. Also, the aluminum tube allows the pipe to be located with a metal detector.

Kitec XPA		
ID#	Description	Radiantmax Price
11878	3/8" x 200'	\$ 99.79
11800	1/2" x 100'	\$ 73.87
11802	1/2" x 300'	\$ 221.62
11810	5/8" x 250'	\$ 257.58
11820	3/4" x 100'	\$ 143.28
11821	3/4" x 300'	\$ 429.84
11828	1" x 100'	\$ 211.25
11830	1" x 300'	\$ 633.74
11832	1" x 500'	\$ 1056.24

**Orange XPA**  
125 PSI @ 180° F (82° C)  
115 PSI @ 210° F (99°)



**Just like copper, only better!**

- 30 year warranty.
- Approved by National Codes
- Quiet. Water hammer eliminated.
- Corrosion proof.
- Virtually maintenance free.
- Can be installed in all weather conditions.
- High impact strength, resists punctures and is impermeable.

**Manifolds**

Kitec K1 Manifolds		
ID#	Description	Radiantmax Price
88263	2 Outlets with 3/8" Fitting	\$30.63
88264	3 Outlets with 3/8" Fitting	\$54.78
88265	4 Outlets with 3/8" Fitting	\$68.68
88268	2 Outlets with 1/2" Fitting	\$ 29.23
88270	3 Outlets with 1/2" Fitting	\$ 41.09
88271	4 Outlets with 1/2" Fitting	\$ 51.51
88272	5 Outlets with 1/2" Fitting	\$ 64.01
88273	6 Outlets with 1/2" Fitting	\$ 73.37
K1 Manifold with Dahl Valves		
88831	2 Outlets with 3/8" Fitting	\$ 63.42
88832	3 Outlets with 3/8" Fitting	\$93.10
88833	4 Outlets with 3/8" Fitting	\$122.79
88269	2 Outlets with 1/2" Fitting	\$ 41.80
88274	3 Outlets with 1/2" Fitting	\$ 60.72
88275	4 Outlets with 1/2" Fitting	\$ 80.96
88276	5 Outlets with 1/2" Fitting	\$ 101.20
88277	6 Outlets with 1/2" Fitting	\$ 118.40

**Radiantmax** copper manifolds provide a low cost and durable solution for a manifold system. Our manifolds have 1" mains, and are available in a variety of configurations.



Kitec Bulk Manifolds		
ID#	Description	Radiantmax Price
88140	1" x 1/2"	\$ 208.53
88152	1" x 3/4"	\$ 226.94
88160	1 1/4" x 1/2"	\$ 245.33
88161	1 1/4" x 3/4"	\$ 263.74
88162	1 1/2" x 1/2"	\$ 294.40
88163	1 1/2" x 3/4"	\$ 312.80
88165	2" x 3/4"	\$ 453.87



**Radiantmax Aluminum Heat Transfer Plates** are installed between the floor joists to provide heat transfer across the bottom of the plywood. The 1/2" BPEX tubing fits into round channels formed into the aluminum. This heat transfer increases the amount of heat delivered by the tubing to the floor and helps keep the temperatures across the floor more evenly distributed. The plates can be stapled to the plywood using an electric stapler. Space should be left between the end of the plates to allow expansion of the aluminum. We recommend the use of aluminum heat transfer plates as part of an underfloor radiant system along with some insulation like Astro-Foil.

Model	Description	Radiantmax Price
htp24	Aluminum Plates - 2 Tube, 8" o.c., 14" wide x 24" long	\$ 4.60



**Differences Between Infloor and Underfloor**

The differences between a radiant system that is installed in a thermal mass, (commonly called infloor), and a system that is installed under the floor are based on the storage of the heat energy. In an infloor system, the thermal mass can store heat energy like a battery. As the room loses heat energy through the walls, glass and ceiling, the floor can then radiate off an equal amount of energy to compensate. Once this energy is depleted, the temperature will drop and the thermostat will call for heat and fire the boiler system. With an underfloor system, there is very little heat energy stored. The tubing is installed against the bottom of the floor joists and has to transfer the heat energy through the plywood using mainly conduction and convection heat transfer. The plywood is not a good thermal mass and can't hold much heat energy. As the room loses heat energy the floor has no extra to give up so the thermostat has to call for heat much earlier. The net effect is that the boiler system has to run more frequently.

One other difference is that since the underfloor system has to "push" its energy through the plywoods insulative resistance (U-value), it needs a higher temperature below the floor to give the same temperature at the surface of the floor. This means that the boiler has to heat the water longer to achieve the same heat output. It also means that insulation is far more crucial to send the heat where you want it.

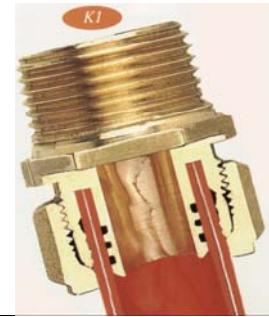


**Same Day Shipping if Ordered By 12pm EST**

**Kitec K1 Compression and K2 Crimp Fittings**



**Kitec** compression fittings provide an easy method for joining kitec piping without a crimp tool. Kitec crimp fittings are the fastest way to join pipe. The crimp tools are expensive, but if you are doing a large number of connections, or plan to use Kitec piping more in the future, we recommend buying the tool.



<p><b>K1 x MPT Adapters</b></p> <p>88072 3/8" K1 x 1/2" MPT \$4.25</p> <p>88080 1/2" K1 x 1/2" MPT \$4.79</p> <p>88121 5/8" K1 x 1/2" MPT \$6.81</p> <p>88081 5/8" K1 x 3/4" MPT \$7.49</p> <p>88122 3/4" K1 x 3/4" MPT \$9.86</p> <p>88082 3/4" K1 x 1" MPT \$10.45</p> <p>88120 1" K1 x 1" MPT \$15.18</p> <p><b>K1 x FPT Adapter</b></p> <p>88085 1/2" K1 x 1/2" FPT \$5.13</p> <p>88086 5/8" K1 x 3/4" FPT \$9.45</p> <p>88124 3/4" K1 x 3/4" FPT \$9.85</p> <p><b>K1 x Copper Solder Spigot Adapter</b></p> <p>88075 3/8" K1 x 1/2" Copper \$5.06</p> <p>88138 1/2" K1 x 1/2" Copper \$5.40</p> <p>88139 5/8" K1 x 3/4" Copper \$8.23</p> <p>88221 3/4" K1 x 3/4" Copper \$10.12</p> <p>88222 1" K1 x 1" Copper \$21.86</p> <p><b>K1 x Copper Solder Socket Adapter</b></p> <p>88074 3/8" K1 x 1/2" Copper \$4.72</p> <p>88135 1/2" K1 x 1/2" Copper \$5.26</p> <p>88149 1/2" K1 x 3/4" Copper \$9.31</p> <p>88148 3/4" K1 x 3/4" Copper \$10.53</p> <p>88245 1" K1 x 1" Copper \$20.92</p>	<p><b>Kitec K2 Adapters</b></p> <p>88525 1/2" K2 x 1/2" MPT \$2.01</p> <p>88595 1/2" K2 x 3/4" MPT \$2.63</p> <p>88526 5/8" K2 x 3/4" MPT \$2.79</p> <p>88516 3/4" K2 x 3/4" MPT \$3.30</p> <p>88517 3/4" K2 x 1" MPT \$4.38</p> <p>88518 1" K2 x 1" MPT \$5.16</p> <p>88519 1/2" K2 x 1/2" FPT \$2.27</p> <p>88597 1/2" K2 x 3/4" FPT \$2.89</p> <p>88520 3/4" K2 x 3/4" FPT \$4.08</p> <p>88521 3/4" K2 x 1" FPT \$4.95</p> <p>88522 1" K2 x 1" FPT \$5.77</p> <p>88637 1" K2 x 3/4" FPT \$5.21</p> <p>88530 1/2" K2 x 1/2" Copper \$2.01</p> <p>88531 5/8" K2 x 3/4" Copper \$2.99</p> <p>88559 1/2" K2 x 3/4" Copper \$2.99</p> <p>88524 3/4" K2 x 3/4" Copper \$3.61</p> <p>88560 1" K2 x 1" Copper \$5.16</p> <p>88528 1/2" K2 x 1/2" Copper \$1.96</p> <p>88529 5/8" K2 x 3/4" Copper \$2.68</p> <p>88599 3/4" K2 x 1/2" Copper \$2.89</p> <p>88561 3/4" K2 x 3/4" Copper \$6.18</p> <p>88562 3/4" K2 x 1" Copper \$6.70</p> <p><b>K2 Adapters</b></p> <p>88575 1/2" K2, STUB-OUT ELL \$6.59</p> <p>88577 3/4" K2 STUB-OUT ELL \$8.60</p> <p>88434 1/2" K2 90 STUB-OUT ELL \$5.99</p> <p>88542 1/2" K2 x male sweat \$6.51</p> <p>88540 1/2" K2 x 1/2" FPT swivel \$2.17</p> <p>88541 1/2" K2 toilet connector \$2.22</p> <p><b>K2 Couplings</b></p> <p>88500 1/2" K2 Coupling \$1.50</p> <p>88501 5/8" K2 Coupling \$1.86</p> <p>88503 3/4" K2 Coupling \$2.48</p> <p>88504 1" K2 Coupling \$3.84</p> <p>88505 3/4" x 1/2" K2 Reducing Coupling \$2.48</p> <p>88507 1" x 3/4" K2 Reducing Coupling \$3.72</p> <p><b>K2 Plugs</b></p> <p>88545 1/2" K2 Plug \$1.99</p> <p>88546 5/8" K2 Plug \$2.28</p> <p>88547 3/4" K2 Plug \$2.82</p> <p>88548 1" K2 Plug \$3.38</p>	<p><b>K2 Elbows</b></p> <p>88537 1/2" K2 x 1/2" Copper \$2.89</p> <p>88589 1/2" K2 x 3/4" Copper \$4.64</p> <p>88538 5/8" K2 x 3/4" Copper \$4.72</p> <p>88539 3/4" K2 x 3/4" Copper \$4.13</p> <p>88543 1/2" K2 x 1/2" FPT \$5.41</p> <p>88544 3/4" K2 x 3/4" FPT Copper Stub Out \$14.03</p> <p>\$8.60</p> <p><b>K2 Tees</b></p> <p>88510 1/2" K2 Tee \$3.20</p> <p>88565 3/4" K2 Tee \$5.77</p> <p>88569 1" K2 Tee \$9.02</p> <p><b>K2 Reducing Tees</b></p> <p>88572 1/2" x 1/2" x 3/4" \$4.31</p> <p>88566 3/4" x 1/2" x 1/2" \$4.24</p> <p>88571 3/4" x 1/2" x 3/4" \$4.85</p> <p>88573 3/4" x 3/4" x 1" \$8.66</p> <p>88593 1" x 1/2" x 1/2" \$7.01</p> <p>88581 1" x 1/2" x 3/4" \$9.23</p> <p>88582 1" x 1/2" x 1" \$9.54</p> <p>88574 1" x 3/4" x 3/4" \$9.38</p> <p>88499 1" x 3/4" x 1" \$7.94</p> <p>88570 1" x 1" x 3/4" \$9.13</p>
<p><b>K1 Adapters, Couplings, Caps</b></p> <p>88174 1/2" K1 STUB-OUT ELL \$11.46</p> <p>88175 1/2" K1 STUB-OUT ELL \$5.78</p> <p>88176 3/4" K1 STUB-OUT ELL \$13.94</p> <p>88177 1/2" K1 x Male sweat \$7.39</p> <p>88178 1/2" K1 x 1/2" FPT swivel \$4.77</p> <p>88076 3/8" K1 Coupling \$6.75</p> <p>88090 1/2" K1 Coupling \$7.42</p> <p>88091 5/8" K1 Coupling \$9.99</p> <p>88092 3/4" K1 Coupling \$14.98</p> <p>88128 1" K1 Coupling \$26.85</p> <p>88118 3/4" K1 Cap \$4.02</p> <p>88318 1" K1 Cap \$5.94</p>	<p><b>K1 Elbows</b></p> <p>88218 1/2" K1 x 1/2" Copper \$9.04</p> <p>88150 1/2" K1 x 3/4" Copper \$9.04</p> <p>88151 5/8" K1 x 3/4" Copper \$9.24</p> <p><b>K1 Tees</b></p> <p>88106 1/2" K1 Tee \$13.36</p> <p>88108 3/4" K1 Tee \$21.59</p> <p>88114 1" K1 Tee \$38.73</p> <p><b>K1 Reducing Tees</b></p> <p>88115 1" K1 x 1" x 3/4" \$37.11</p>	<p><b>Tools</b></p> <p>88347 5-in-1 Beveling Tool \$6.21</p> <p>88210 Tubing Cutter \$21.40</p> <p>88211 Replacement Cutter Blade \$10.79</p> <p>88310 1/2" Bending Spring \$17.12</p> <p>88312 3/4" Bending Spring \$26.54</p> <p>88309 1" Bending Spring \$47.08</p> <p>88633 1/2" Crimp Tool (12") \$248.00</p> <p>88554 1/2" Crimp Tool (16") \$260.00</p> <p>88556 5/8" Crimp Tool \$272.00</p> <p>88557 3/4" Crimp Tool \$272.00</p> <p>88558 1" Crimp Tool \$384.00</p>
		<p><b>Parts</b></p> <p>88300 1/2" Kitec Pipe Hanger \$0.68</p> <p>88301 5/8" Kitec Pipe Hanger \$0.77</p> <p>88302 3/4" Kitec Pipe Hanger \$0.81</p> <p>88303 1" Kitec Pipe Hanger \$0.94</p> <p>88304 1/2" Kitec Nail-on Clip \$0.15</p> <p>88305 5/8" Kitec Nail-on Clip \$0.21</p> <p>88306 3/4" Kitec Nail-on Clip \$0.50</p>

**Controls**



**Tekmar** offers the finest collection of controls for HVAC systems. Their ease of installation along with their product technical support make them the choice of professionals and “do-it-yourselfers”. Contact us for specific control information and applications.

“Simplicity through innovation”

Type #	Description	List Price	Radiantmax Price
<b>Room Temperature Units</b>			
062	RTU	\$270.00	\$172.80
063	RTU—Remote Sensor Inputs	\$382.00	\$244.48
TekmarNet 4 Thermostats			
TekmarNet 4 Controls			
<b>Programmable Thermostats</b>			
510	Digital Thermostat - One Stage Heat	\$260.00	\$166.40
511	Digital Thermostat - One Stage Heat with sensor	\$314.00	\$200.96
512	Digital Thermostat - Two Stage Heat / One Stage Cool	\$287.00	\$183.68
<b>Sensors</b>			
092	Snow Melt Kit (tN2)	\$ 571.00	\$ 365.44
094	Snow/Ice Sensor	\$ 1796.00	\$ 1149.44
<b>Setpoint and Pump Controls</b>			
132	Pump Sequencer (Stand-by, Two Stage)	\$ 961.00	\$ 615.04
150	One Stage Setpoint Control	\$ 315.00	\$ 201.60
152	Two Stage Setpoint Control	\$ 409.00	\$ 261.76
153	Mixing Setpoint Control	\$ 533.00	\$ 341.12
155	Setpoint Control	\$ 517.00	\$ 330.88
<b>Boiler / DHW Controls</b>			
260	One Stage Boiler & DHW Control	\$ 694.00	\$ 444.16
261	Two Stage Boiler & Setpoint Control	\$ 748.00	\$ 478.72
262	Boiler Control (Two Stage Boiler & DHW / Two Stage DHW)	\$ 1269.00	\$ 812.16
356	Mixing Control ( Variable Speed)	\$ 497.00	\$ 318.08
360	Mixing Control (Floating Action)	\$ 815.00	\$ 521.60
361	Mixing Control ( Variable Speed)	\$ 868.00	\$ 555.52
362	Mixing Control (Floating Action / Variable Speed)	\$ 1391.00	\$ 890.24
363	Universal Reset Control ( Mixing, Boiler & DHW)	\$ 1701.00	\$ 1088.64
<b>Snow Melting Controls</b>			
650	Snow Melting Control (Pulse Width Modulation)	\$ 892.00	\$570.88
665	Snow Detector & Melting Control (Pulse Width Modulation)	\$ 1305.00	\$835.20
667	Snow Detector & Melting Control (Floating / Variable Speed / 4-20mA)	\$ 2411.00	\$ 1543.04



**Same Day Shipping if Ordered By 12pm EST**

**Zone Valves, Thermostats, Air Eliminators**



**Caleffi Z-one™ Zone Valves**

Caleffi's line of motorized hydronic valves provides convenient, reliable and easy installation for a variety of heating and cooling applications. The Z-one gives you the same advantages as the classic zone valve and makes installation a snap with easy, one-handed removal or engagement of actuator to valve body.

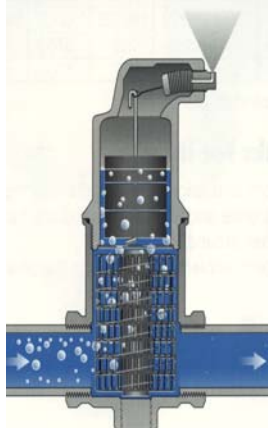
Model	Description	Radiantmax Price
cz55	3/4" Zone Valve Body and actuator	\$87.21
czvb1	1" Zone Valve Body, Sweat	\$51.82
czvact	Actuator	\$59.48



**Erie Thermostats** offer state-of-the-art design in their electronic microprocessor based units. Invensys combines the simplicity of a thermostat with the versatility and power of a controller. Proportional plus integral (PI) control algorithm with advanced adaptive logic guides the microprocessor based units. This provides precise and stable control under varying system capacity and load conditions, without the need for tuning or calibrating the control algorithm.

**Microprocessor, Push Button Control, Non-Programmable, Digital Display**

Model	Description	Radiantmax Price
et201	24V, Heat Only, No Fan	\$ 37.05
et201fp	24V, Heat Only, No Fan Control and Freeze Protection	\$ 38.68
et205	24V, Heating and Cooling, Fan Control	\$ 38.68
et205fp	24V, Heating and Cooling, Fan Control and Freeze Protection	\$ 40.29
et207	Heating and Cooling, Fan Control and B&O Terminals for Heat Pump	\$ 41.91
et207fp	24V, Heating and Cooling, Fan Control, B&O Terminals, Freeze Protection for Heat Pump	\$ 43.50

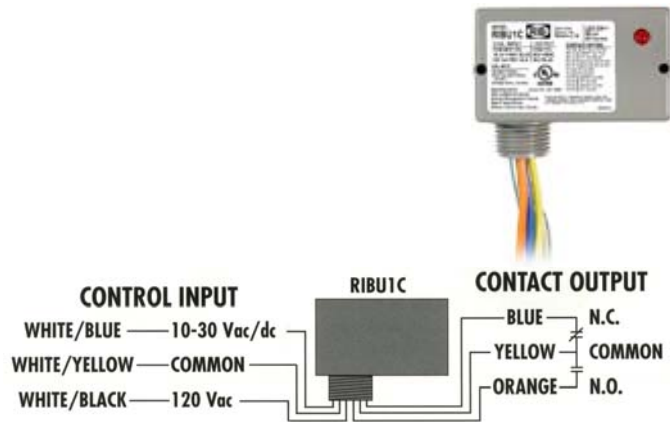


**Discal Air Eliminators** remove small air bubbles (microbubbles) that are trapped in solution. These air bubbles normally get trapped in radiators or in the boiler where the temperatures are higher or the pressure is lower. By removing this air the systems don't have the oxygen necessary for corrosion, pumps don't cavitate, and the systems don't need to be "bled".

Model	Description	Radiantmax Price
dmb34	3/4" Discal Micro-bubbler	\$94.83
dmb1	1" Discal Micro-bubbler	\$105.13
dmb114	1 1/4" Discal Micro-bubbler	\$149.63



**RIB** relays are compact, multi-voltage relays that are perfect for most control applications. They can be installed through any knockout so they don't require a separate enclosure. The LED gives you feedback for testing and troubleshooting.



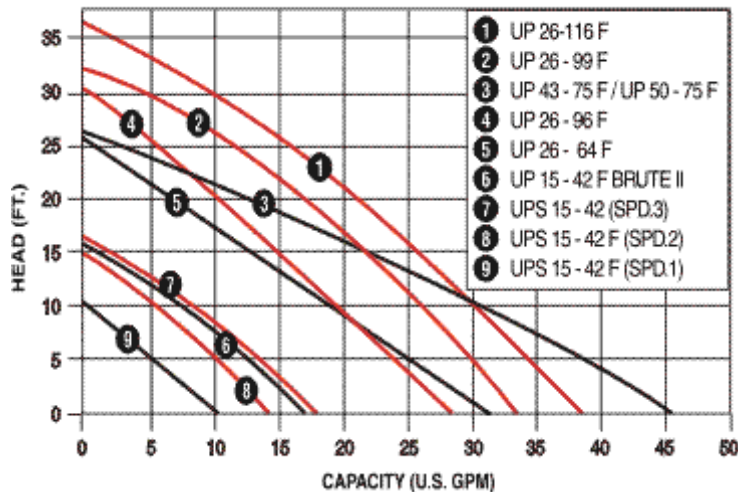
Model	Description	Radiantmax Price
ribu1c	Single Pole Double Throw 10 amp relay	\$12.72
ribu2c	2 - Single Pole Double Throw 10 amp relays	\$23.28
ribtu1c	Single Pole Double Throw Hi/Lo Separation relay	\$16.88
ribu1s	Single Pole relay w/ override switch	\$18.22

Grundfos UP Series Pumps		
Model	Description	Radiantmax Price
gr1542	15-42F	\$107.08
gr1558	15-58F	\$113.42
gr1542b5	15-42F B5	\$262.66
gr2664	26-64F	\$289.42
gr2696	26-96F	\$299.27
gr2699	26-99F	\$304.20
gr4375	43-75F	\$337.16
gr26116	26-116F230v	\$314.06



**Performance**

**UP Series - Closed System**



Same Day Shipping if Ordered By 12pm EST



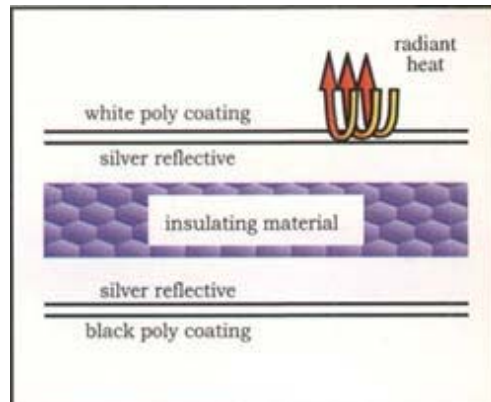
**Astro-Foil reflective insulation** consists of two layers of aluminum foil laminated to the outside of heavy-duty polyethylene air-bubble cushioning. These bubbles form trapped air spaces between the foil surfaces to give the structure excellent R values. Because Astro-Foil is also impervious to moisture and air currents, it is an ideal convection and vapor barrier. Astro-Foil's surfaces reflect heat in both directions to keep you warmer in winter and cooler in summer.

**Tested R-Values:** 15 (Down), 7.31 (Horizontal), 5.4 (Up)

Astro-Foil		
Model	Description	Radiantmax Price
af1650	Astro-Tab Roll 16" wide x 50 ft long	\$ 48.00
af2450	Astro-Tab Roll 24" wide x 50 ft long	\$ 66.72

**Insul-Tarp Under Slab Insulation**

- The superior physical characteristics of Insul-Tarp and its high R-value make it an ideal product for insulating under a concrete slab on residential, commercial, and agricultural projects. Insul-Tarp controls all three modes of heat transfer: conduction, convection, and radiation. It reflects up to 97% of the heat energy radiating downward.
- Insul-Tarp is manufactured with closed cell foam sandwiched between high density 5x5 woven rip-stop poly. The poly is white on the top for reflection and black on the bottom for absorption of earth heat. It has an aluminum reflective coating on the inside of each poly surface, which makes it non-permeable and resistant to mildew and fungi. It is extremely durable and the thermal performance will not degrade over time.
- Insul-Tarp provides an excellent vapor barrier because of its non-permeability as well as a highly effective radon gas barrier.
- Insul-Tarp installs in 1/4 of the time compared to foam insulation. It is lightweight, cuts and staples easily. Grommets installed along the outer edge provide anchor locations. Typically the tarp is overlapped at the edge seam which gives you a coverage width of 5'9". Please use this to calculate the number of rolls needed.



Insul-Tarp		
Model	Description	Radiantmax Price
it12625	1/2" Insulation Tarp - 6ft x 25ft, 132 s.f. coverage per roll	\$ 98.50
it12650	1/2" Insulation Tarp - 6ft x 50ft 272 s.f. coverage per roll	\$ 197.00
it121250	1/2" Insulation Tarp - 12ft x 50ft, 568 s.f. coverage per roll	\$394.00



Insul-Tarp is one of the best products to hit the construction marketplace in years! This stuff makes putting down slab insulation a joy! You can even wrap it up on the edges to insulate the slab edge as well. What used to take hours of labor now takes minutes. Once you try this product you will never go back!



**Radiant Wall Panels**



**Myson's Select Panel Radiators** provide an efficient gentle heat that avoids the rapid temperature swings common to conventional hydronic baseboards. The streamlined dual-panel design delivers a high output yet quiet, steady warmth while using a fraction of the space of a standard radiator. Steel panel construction includes phosphate treatment and priming for corrosion resistance and a high gloss epoxy/polyester finish for superior protection and a beautiful appearance. The finish is so good, it never needs painting!

**Every Select Radiator is backed by Myson's 5-year warranty.**

**Myson Select Performance Data**

Nominal Height	12"		16"		24"		28"	
Actual Height	11 13/16"		15 3/4"		23 5/8"		27 9/16"	
Nominal Length (Inches)	Model	Btu/Hr	Model	Btu/Hr	Model	Btu/Hr	Model	Btu/Hr
15.7					sx60-40	2233	sx70-40	2534
19.6			sx40-50	1982	sx60-50	2791	sx70-50	3168
23.6	sx30-60	1857	sx40-60	2379	sx60-60	3349	sx70-60	3802
27.6			sx40-70	2775	sx60-70	3907	sx70-70	4435
31.5			sx40-80	3172	sx60-80	4466	sx70-80	5069
35.4			sx40-90	3568	sx60-90	5024	sx70-90	5702
39.4	sx30-100	3095	sx40-100	3965	sx60-100	5582	sx70-100	6336
43.3					sx60-110	6140		
47.2			sx40-120	4758	sx60-120	6698	sx70-120	7603
51.2					sx60-130	7257		
55.1	sx30-140	4333			sx60-140	7815	sx70-140	8871
63			sx40-160	6344	sx60-160	8931	sx70-160	10138
70.9	sx30-180	5570						

**Heat Output Adjustment Factors\***

Temperature Difference °F	65	70	75	80	85	90	95	100	105	110	115	120	125	130
°C	36	39	42	45	47	50	53	56	58	61	64	67	69	72
Adjustment Multiplier	.53	.59	.64	.69	.74	.80	.85	.91	.97	1.02	1.08	1.14	1.2	1.26

\* Certified heat output is based on tests conducted at room temperature of 68°F(20°C) and a mean water temperature of 176°F (80°C) using T.B.O.E (Top, Bottom, Opposite End) connections. For temperature differences other than 108°F(60°C) used for these tests, multiply the heat output (see table above) by the adjustment multiplier (given in this table above) which correspond to the desired performance conditions. B.O.E. (Bottom, Opposite End) connections give slightly lower heat output.



Radiant wall panels are a great way to heat an area that doesn't need a lot of heat or is hard to get access for a radiant floor system.



**Same Day Shipping if Ordered By 12pm EST**

**Radiant Wall Panels, Instant Hot Water Heaters**

<b>Myson Select Pricing</b>					
Model	Description	Radiantmax Price	Model	Description	Radiantmax Price
sx3060	12" x 23.6" Panel Radiator	\$65.12	sx60100	24" x 39.4" Panel Radiator	\$159.28
sx30100	12" x 39.4" Panel Radiator	\$100.32	sx60110	24" x 43.3" Panel Radiator	\$176.00
sx30140	12" x 55.1" Panel Radiator	\$121.44	sx60120	24" x 47.2" Panel Radiator	\$186.56
sx30180	12" x 70.9" Panel Radiator	\$148.72	sx60130	24" x 51.2" Panel Radiator	\$202.40
sx4050	16" x 19.6" Panel Radiator	\$67.76	sx60140	24" x 55.1" Panel Radiator	\$220.00
sx4060	16" x 23.6" Panel Radiator	\$78.32	sx60160	24" x 63.0" Panel Radiator	\$245.52
sx4070	16" x 27.6" Panel Radiator	\$88.00	sx7040	28" x 15.7" Panel Radiator	\$80.08
sx4080	16" x 31.5" Panel Radiator	\$100.32	sx7050	28" x 19.6" Panel Radiator	\$86.24
sx4090	16" x 35.4" Panel Radiator	\$110.88	sx7060	28" x 23.6" Panel Radiator	\$110.88
sx40100	16" x 39.4" Panel Radiator	\$121.44	sx7070	28" x 27.6" Panel Radiator	\$127.60
sx40120	16" x 47.2" Panel Radiator	\$143.44	sx7080	28" x 31.5" Panel Radiator	\$141.68
sx40160	16" x 63.0" Panel Radiator	\$179.52	sx7090	28" x 35.4" Panel Radiator	\$159.28
sx6040	24" x 15.7" Panel Radiator	\$73.04	sx70100	28" x 39.4" Panel Radiator	\$172.48
sx6050	24" x 19.6" Panel Radiator	\$87.12	sx70120	28" x 47.2" Panel Radiator	\$202.40
sx6060	24" x 23.6" Panel Radiator	\$100.32	sx70140	28" x 55.1" Panel Radiator	\$231.44
sx6070	24" x 27.6" Panel Radiator	\$117.92	sx70160	28" x 63.0" Panel Radiator	\$264.00
sx6080	24" x 31.5" Panel Radiator	\$131.12	2trv16ans	1/2" Thermostatic Radiator Valve	\$51.92
sx6090	24" x 35.4" Panel Radiator	\$143.44	lkd16an	1/2" Adjustable Locking Flow Valve	\$15.84



The Takagi Tankless Water Heater is made using the best quality material for durability and long life, unlike storage tanks which are designed to eventually rust and be thrown away. The Takagi tankless system uses all copper and brass water ways, stainless steel burners, a rust resistant baked polyurethane finish, and even has pipe freezing protection.



Model	FLASH T-K Jr.	FLASH T-KD20	FLASH T-K3	MOBIUS T-M1
BTU Max (NG)	140,000 BTU	185,000 BTU	185,000 BTU	235,000 BTU
BTU Min (NG)	19,500 BTU	20,000 BTU	20,000 BTU	25,000 BTU
Flow Rating	0.75 - 5.8 GPM	0.75 - 6.9 GPM	0.75 - 6.9 GPM	0.75 - 9.6 GPM
First Hour	181 gallons/hour	240 gallons/hour	240 gallons/hour	300 gallons/hour
Rating	3.0 gallons/minute	4.0 gallons/minute	4.0 gallons/minute	5.0 gallons/minute
Net Weight	30 lbs	60 lbs	60lbs.	70lbs.
Dimensions	H20.0" W14.0" D6.0"	H24.0" W18.0" D9.0"	H24.0" W18.0" D9.0"	H24.0" W18.0" D9.0"
ThermalEfficiency	Natural: 83.0% LP: 84.0 %	Natural: 85.0% LP: 86.0 %	Natural: 85.0% LP: 86.0 %	Natural: 82.3 % LP: 84.7 %
Radiantmax Price	\$ 695.00	\$ 1188.53	\$ 1188.53	\$ 1599.00

# INDOOR AIR QUALITY

## Heat and Energy Recovery Ventilators



Indoor air quality problems have soared since the late 1970's when construction technology succeeded in developing energy efficient "tight" houses. Pollutants inside houses, which once escaped through cracks around windows and doors, are now trapped inside creating an indoor environment that is often 2 to 5 times more polluted than outside. Pet dander, mold spores, dust mites, allergens, tobacco smoke and other pollutants add up to poor indoor air quality.

Model	Description	Radiantmax Price
kshr1505r	SHR 1505R HRV, 150 cfm, Polypropylene Core	\$912.24
kshr2005r	SHR 2005R HRV, 200 cfm, Polypropylene Core	\$1079.40
kshr3005r	SHR 3005R HRV, 300 cfm, Polypropylene Core	\$1590.12
kser1504r	SER 1504R ERV, 150 cfm, Enthalpy Core	\$758.52
kser2004r	SER 2004R ERV, 200 cfm, Enthalpy Core	\$1118.88
khp6904	KHP 6904 HRV, 900 cfm, Heat Pipe Core	\$2095.80
khp11004	KHP 11004HRV, 1200 cfm, Heat Pipe Core	\$2688.00
khp20000	KHP 20000 HRV, 2000 cfm, Heat Pipe Core	\$8467.20
khp30000	KHP 30000 HRV, 3000 cfm, Heat Pipe Core	\$10584.00
CM3000	Whole House HEPA Filter	\$396.00
CM47624	HEPA Filter Kit RPFH 1315	\$30.80
CM47620	HEPA Filter RHF 16	\$99.44
fedf5	Intellitek Control	\$114.40
fmdeh1	Low Voltage Dehumidistat	\$36.96
frts2	15 min. Push Button Timer	\$36.96
fcom6p	Pair Plastic Wall Hoods	\$27.00
cge4	Grilles/Exhaust 4"	\$11.44
cge5	Grilles/Exhaust 5"	\$13.11



Does your home get that "musty" smell during the winter months? Fresh air is the key but opening your doors and windows in the winter isn't very energy-saving. An HRV or ERV can deliver fresh air into your home and at the same time reclaim most of the heat that is being exhausted. The units with an enthalpy core also have the ability to keep in the humidity during those dry winter months. If you live in a nice new tight home, this is a must have.



Same Day Shipping if Ordered By 12pm EST

# GEOTHERMAL

## Horizontal and Vertical Forced Air



**ECONAR** Systems, Corporation is the only North American manufacturer of ColdClimate™ GeoSource® heating and air conditioning systems. ECONAR produces three types of geothermal heat pumps. Forced air heat pumps, which transfer heat from the water-to-air, hydronic heat pumps which transfer heat from water-to-water and combination forced air/hydronic heat pumps, which incorporate the hydronic heating of water-to-water unit into a forced air unit.

### Horizontal Forced

Model	Product Description	Radiantmax Price
gh18	1.5 Ton Horizontal Forced Air Unit	\$4435.20
gh23	2.0 Ton Horizontal Forced Air Unit	\$4615.60
gh29	2.5 Ton Horizontal Forced Air Unit	\$4694.80
gh36	3.0 Ton Horizontal Forced Air Unit	\$4743.20
gh42	3.5 Ton Horizontal Forced Air Unit	\$4853.20
gh59	5.0 Ton Horizontal Forced Air Unit	\$5588.00
gh67	6.0 Ton Horizontal Forced Air Unit	\$7308.40
gh98	8.0 Ton Horizontal Forced Air Unit	\$10520.40
gh120	10.0 Ton Horizontal Forced Air Unit	\$10920.80

### Vertical Forced Air

Model	Product Description	Radiantmax Price
gv18	1.5 Ton Vertical Forced Air Unit	\$4254.80
gv23	2.0 Ton Vertical Forced Air Unit	\$4501.20
gv29	2.5 Ton Vertical Forced Air Unit	\$4628.80
gv36	3.0 Ton Vertical Forced Air Unit	\$4672.80
gv42	3.5 Ton Vertical Forced Air Unit	\$4734.40
gv52	4.0 Ton Vertical Forced Air Unit	\$5438.40
gv59	5.0 Ton Vertical Forced Air Unit	\$6028.00
gv67	6.0 Ton Vertical Forced Air Unit	\$7176.40



## Hydronic and Water Heating Units

*Other Applications.* Many other hydronic applications such as swimming pools, hot tubs, tank heating, base board/finned tube, and radiators are easily sized based on temperature, flow rate and heat dissipation and add to the numerous possible uses of an ECONAR hydronic heat pump.

### Performance Data

Hydronic Models			Heating				Cooling		
			32°F EWT				77°F EWT		
		Hydronic	Loop	115°F output		85°F output		45°F output	
MODEL	GPM	GPM	BTU/hr	COP	BTU/hr	COP	BTU/hr	EER	
GW/290/291	4	7	24,400	3.4	25,100	4.7	25,400	15.2	
GW/360/361	5	8	28,200	3.3	29,000	4.7	31,600	16.8	
GW/420/421	6	10	36,500	3.4	37,600	4.9	36,000	15.4	
GW/520/521	7	11	42,600	3.1	43,800	4.6	46,600	16.5	
GW/590/591	9	13	51,900	3.2	53,400	4.7	54,400	15.4	
GW/670/671	11	14	60,200	3.0	61,900	4.5	60,800	14.2	
GW/1200	18	26	100,500	3.0	101,900	4.4	102,200	14.0	
GW/3800	54	78	301,500	3.0	305,400	4.3	306,500	14.0	

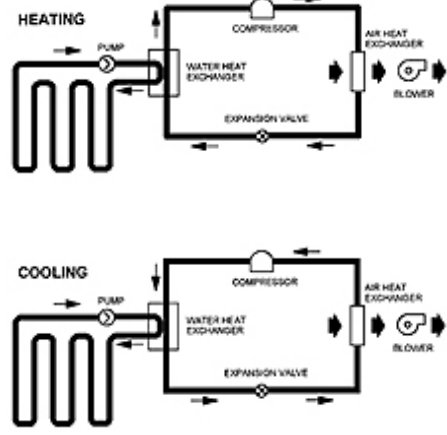
Item Code	Product Description	Radiantmax Price
gw29	2.5 Ton Hydronic Unit	\$4096.40
gw36	3.0 Ton Hydronic Unit	\$4149.20
gd36	3.0 Ton Domestic Water Heater	\$4043.60
gw42	3.5 Ton Hydronic Unit	\$4254.80
gw52	4.0 Ton Hydronic Unit	\$4950.00
gw59	5.0 Ton Hydronic Unit	\$5227.20
gd59	5.0 Ton Domestic Water Heater	\$5126.00
gw67	6.0 Ton Hydronic Unit	\$5720.00
gw120	10.0 Ton Hydronic Unit	\$8813.20
gw380	30.0 Ton Hydronic Unit	\$21458.80



[WWW.RADIANTMAX.COM](http://WWW.RADIANTMAX.COM)

800-572-7831

**Combination Forced Air**

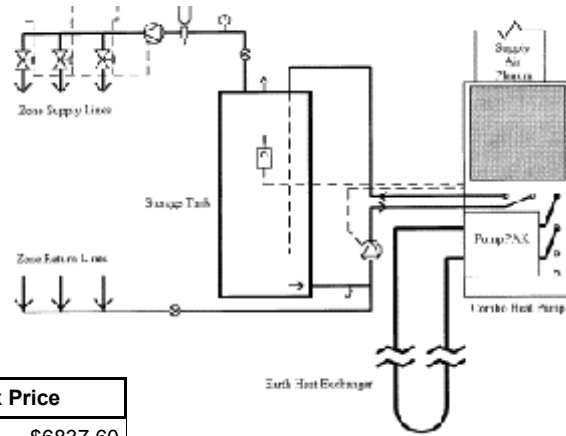


**GeoSource® DualTEK Combination Forced Air & Hydronic Heat**

ECONAR Energy Systems Corporation is the only North American manufacturer of ColdClimate™ GeoSource® heat pumps. ECONAR manufacturers, some of the most efficient, comfortable, quiet, safe and reliable geothermal heat pumps available today. With applications for both residential and commercial projects, our complete line of Forced Air, Hydronic, Combination, and Domestic Hot Water fill any need.



- Common Applications Include:**
- Radiant Floor Heat
  - Swimming Pools
  - Agriculture
  - Fish Farms
  - Hot Tubs
  - Snow Melt
  - Heat Recovery



Item Code	Product Description	Radiantmax Price
gv36	3.0 Ton Combo Forced Air & Hydronic Unit	\$6837.60
gv52	4.0 Ton Combo Forced Air & Hydronic Unit	\$7647.20
gv59	5.0 Ton Combo Forced Air & Hydronic Unit	\$8364.40
gv67	6.0 Ton Combo Forced Air & Hydronic Unit	\$9332.40

**GeoSource® PumpPAK®**



With a Pump Pak®, the work is done before the job begins. This innovative design means much of the work is finished at the factory, not at your site. All the pumps and valves are already wired and plumbed. Just attach the Pump Pak® to the heat pump, connect the wires, and attach the pipes from the earth loop. That's all there is to it, and the installers are ready to fill and purge.

Item Code	Product Description	Radiantmax Price
pp1	Pump Pak (1)26-99 Pump	\$1407.71
pp2	Pump Pak (2)26-99 Pumps	\$1785.66
pp3	Pump Pak (3)26-99 Pumps	\$2092.31
pp4	Pump Pak (4)26-99 Pumps	\$2507.12



**Same Day Shipping if Ordered By 12pm EST**

## **GEOTHERMAL** **Piping and Fittings**

Eagle Mountain carries a full line of geothermal fittings and pipe and accessories.  
These are just a few, so call us!

<b>Geothermal Pipe, Fittings, Tools and Accessories</b>		
<b>Model</b>	<b>Product Description</b>	<b>Radiantmax Price</b>
cp114100	1 1/4" x 100' SDR-11 Pipe	\$94.21
cp11420	1 1/4" x 20' SDR-11 Straight Stick	\$18.85
cp34700	3/4" x 700' SDR-11 Pipe	\$267.46
YFPC44	3/4" x 3/4" Coupling	\$2.57
YFPC66	1 1/4" x 1 1/4" Coupling	\$3.48
YFPT444	3/4" x 3/4" x 3/4" Tee	\$6.18
YFPT644	1 1/4" x 3/4" x 3/4" Tee	\$9.09
YFPT664	1 1/4" x 1 1/4" x 3/4" Tee	\$7.41
YFPT666	1 1/4" x 1 1/4" x 1 1/4" Tee	\$14.20
YFPE44	3/4" x 3/4" Elbow	\$3.71
YFPE66	1 1/4" x 1 1/4" Elbow	\$4.64
YFPMA66	1 1/4" x 1 1/4" MPT	\$39.86
FHAK46P	3/4" and 1 1/4" IPS - Single Fusion Tool Kit	\$814.80
e75-1012	GTF (Geothermal Heat Transfer Fluid) 5 Gallon Pail	\$38.92



### **Geothermal System Packages**

<b>Model</b>	<b>Product Description</b>	
LOOP3	Horizontal Slinky System Package - 3 Ton	\$1947.75
LOOP4	Horizontal Slinky System Package - 4 Ton	\$2358.75
LOOP5	Horizontal Slinky System Package - 5 Ton	\$2835.00
LOOP6	Horizontal Slinky System Package - 6 Ton	\$3286.50
WW1	Well Water System Package	

#### **Every Slinky Package Includes:**

- Coils of 3/4" x 700' PE Pipe
- Coil of 1 1/4" x 100' PE Pipe
- Straight Length 1 1/4" x 4' PE Pipe
- Zip Ties
- Geo Fittings
- 5 Gallon Pails of GTF Fluid
- Fernco Fittings

#### **Every Well Water Package Includes:**

- 1" FPT Solenoid Water Valve w/Plug
- 3/4" MPT Nylon Flowmeter
- Freeze Protection Switch
- 3/4" Clear Bowl Strainer
- P/T Ports, .5" FPT

**WWW.RADIANTMAX.COM**

**800-572-7831**

**Index**

<b>About Eagle Mountain</b>	<b>2</b>
<b>Air Quality</b>	<b>19</b>
Heat / Energy Recovery Ventilators	19
HEPA Filter Systems	19
<b>Boilers</b>	<b>6-8</b>
Baxi	6
Lochinvar	8
Munchkin	7
<b>Controls</b>	<b>13</b>
Tekmar	13
<b>Fittings</b>	<b>12, 22</b>
Kitec	12
Geothermal	22
<b>Geothermal</b>	<b>20-22</b>
GeoSource DualTEK Combo Unit	21
Horizontal and Vertical Forced Air	20
Hydronic and Water Heating Units	20
GeoSource Pump Pak	21
Tubing, Fittings and Tools	22
<b>Indirect Hot Water Heaters</b>	<b>9</b>
Coilex	9
<b>Instant Hot Water Heaters</b>	<b>18</b>
Takagi	18
<b>Insulation</b>	<b>16</b>
Astrofoil	16
Insul-Tarp	16
<b>Manifolds</b>	<b>11</b>
Kitec	11
<b>Piping/Tubing</b>	<b>10,22</b>
Geothermal Piping	22
BPEX	10
Kitec Tubing	10
<b>Radiant Heating Packages</b>	<b>4,5</b>
Radiant Slab	4
Radiant Underfloor	4
Radiant Overfloor	5
<b>Radiant Wall Panels</b>	<b>17,18</b>
Myson	17,18
<b>System Components</b>	<b>14,15</b>
Air Eliminators	14
Pumps	15
Relays	15
Thermostats	14
Zone Valves	14

**How can I pay for my order?**  
We accept Visa, MasterCard, Discover, and American Express. We also accept checks and money orders. Orders paid by checks usually will not be processed until the funds have been verified.

**What if I need to exchange my order?**  
Every product you purchase from Eagle Mountain, Inc. is backed by our 30-day defective exchange guarantee. If a product you purchase from us, within 30 days from ship date, is not working due to an out-of-the-box defect we will gladly exchange it for the same model. You can contact us by phone to request an exchange. Once an exchange authorization is given, it remains valid for 10 business days, (two business weeks.) When sending back merchandise, you must use the same packaging and freight company that delivered the product. We also recommend insuring all products, since we cannot be held liable for damages caused by shipping. Eagle Mountain, Inc. will pay for any costs incurred to re-ship a product out to you. If an exchange needs to be expedited you can request a "cross-ship" in which case we would charge your credit card for the second unit and give you a credit on the initial unit once it arrives back at our warehouse.

**What if I need to return my order?**  
Every product you purchase from Eagle Mountain, Inc. is backed by a 14 day money-back guarantee less a 15% restocking fee. All returns require a return authorization number and requests must be made within 14 days from initial ship date. To request a return please call us anytime from 9am to 5pm, EST, Monday - Friday. When sending back merchandise, you must ship it in the same packaging it arrived to you in, and use the same freight company that delivered the product to you. This will help reduce the chance of product damage while in transit. Costs associated with the return of goods to us is the responsibility of the customer.

**What if you don't have all the items in stock?**  
If an item you ordered is out of stock, it will be back-ordered automatically (domestic orders only). For international orders, we will e-mail you of the missing items to confirm the balance of your order.

**Is it safe to use my credit card?**  
Absolutely. We have taken every precaution to make your transaction secure. Our Internet site is built using industry-standard security measures, including Secure Sockets Layer. Nevertheless, if you prefer, we also offer you the option of submitting your order by telephone or fax to the numbers below. All account information submitted to us is safely isolated from unauthorized Internet access.

**Prices are subject to change without notice.**



**Same Day Shipping if Ordered By 12pm EST**

**EAGLE MOUNTAIN** INC

4353 Bristol Valley Rd.  
Bristol, NY 14424



Eagle Mountain has a vision.

Some people would call it a revolution.

In our vision is a world with clean air and clean water.

A world less dependant on fossil fuels.

A world where energy-efficiency is a way of life.

We welcome you to join our efforts towards this goal.

**Welcome to the revolution...**