

Sell Sheet

Heavy-Duty No-Hub Couplings

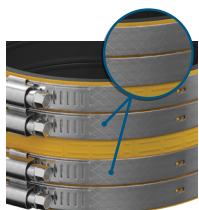


PROFLO® Heavy-Duty No-Hub Coupling provides a cost-effective solution for heavy-duty applications.



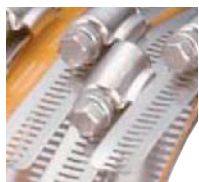
FERGUSON.COM/PROFLO

Heavy-Duty No-Hub Couplings



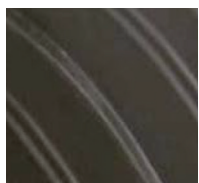
Visual Torque Indicator

No more guess work needed when using an impact to install. When the tail of the clamp falls within the cross hatched area, you know the coupling has been properly tightened.



User-Friendly 5/16" Hex-Head Screw

The 5/16" hex-head screw is designed to apply the full load of 80 in.-lbs. of installation torque to the band/shield assembly.



Specially Beaded Gaskets

This special gasket design enables ease of installation as it slides over pipe much easier than traditional ribbed gaskets. Gaskets comply with ASTM C564.



Mechanical Interlocking Clamp Design

PROFLO clamps feature a one-piece screw housing that mechanically interlocks the housing to the band. This one-piece housing design eliminates leak paths that can occur in staked clamps. Interlocked clamp designs provide higher torque ratings without the risk of housing separation.



The Shield

The 0.008" thick all 300 series stainless steel yellow shield requires less band load to transfer pressure to the gasket, leaving more clamping load in reserve to compress the gasket. The bidirectional corrugations create clamp sealing pressure in both parallel and transverse patterns on the gasket and pipe, thereby avoiding pull-out failures, and providing a positive, reliable seal.

Features	PROFLO Heavy-Duty No-Hub Couplings Series
9/16" Clamp Band	Yes
5/16" Hex Head Screw	Yes
No. of Clamps Included	4 (1-1/2" thru 4") 6 (5" thru 10")
Coupling Width	1-1/2" thru 4" = 3" 5", 6", 8" & 10" = 4"
Shield Color	Yellow
Bidirectional Shield	Yes
Beaded Gasket	8" & 10"
Offset Ribbed Gaskets	1-1/2" – 6"
Floating Eyelets	Yes
Interlocked Housing Design	Yes
Shield Material	304 SS
Band Material	301 SS
Housing Material	304 SS
Screw Material	305 SS
Eyelet Material	305 SS
Gasket Material	ASTM C564 Compliant
Installation Torque	80 in-lbs
Ultimate Torque	100 in-lbs
CISPI 310 Compliant	Exceeds
ASTM C1540 Compliant	Yes
Factory Mutual 1680	Compliant
IAPMO	Certified
Canadian Std Association	Certified
Massachusetts Approval	Yes

MADE IN THE
USA

FERGUSON.COM/PROFLO



Heavy-Duty
No-Hub Couplings

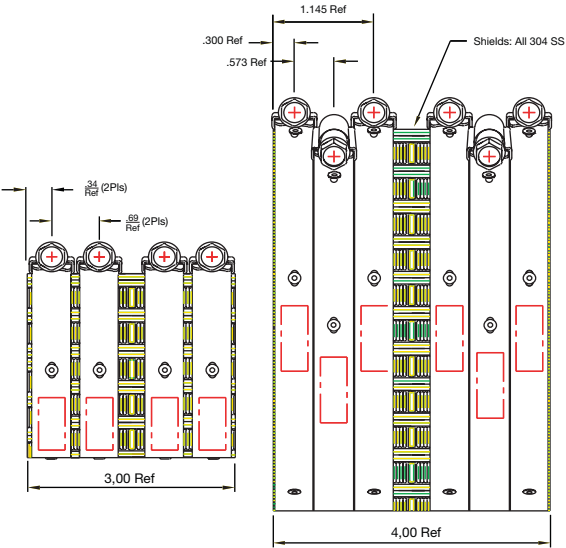
The PROFLO Heavy-Duty No-Hub Coupling is engineered to provide all the extra holding power of a heavy-duty coupling without all the extra cost. The HD coupling installs at 80 in.-lbs. of screw torque and features the extra wide, bidirectional shield and specially beaded gasket. Teamed with an additional complement of 9/16" wide clamps, they combine to exert exceptional hold on the pipe for a positive, reliable seal. And the user-friendly 5/16" hex-head screw eases installation. Look for the distinctive yellow shield to be sure you are getting the PROFLO Heavy-Duty No-Hub Coupling.

Description: Couplings consist of gasket and shield assemblies. The shield assemblies have four or six clamps depending on size. The clamps are fastened with eyelets to the bidirectional corrugated shield.

Materials: Steels used in couplings are stainless steels. Shields, bands, housings, screws and eyelets are AISI stainless steel. Gaskets are made from an elastomeric neoprene compound that meets the requirements of ASTM C564.

Specifications: Coupling complies with CISPI 310, ASTM C564, ASTM C1540, IAPMO file #3198; Commonwealth of Massachusetts CMR-248 and City of New York MEA 253-98-E; meets Factory Mutual CN 1680.

Service Temperature: Temperature range: -30°F – 220°F



Sizes 1-1/2" – 4"

Sizes 5" – 10"



Optional: RAPTOR® torque wrench (**RAP18550**)

MADE IN THE
USA

PROFLO Heavy-Duty No-Hub Couplings Series

Size	SKU	No. of Clamps	Coupling Width	Installation Torque	Screw Hex Size
1-1/2"	PFNHHMDCJ	4	3"	80 in.-lbs.	5/16"
2"	PFNHHMDCK				
3"	PFNHHMDCM				
4"	PFNHHMDCP				
5"	PFNHHMDCS	6	4"		
6"	PFNHHMDCU				
8"	PFNHHMDCX				
10"	PFNHHMDC10				