

JCM 131 All Stainless Steel Universal Clamp Coupling - Single Band

JCM All Stainless Universal Clamp Couplings work on the mechanical sealing principle providing a stronger, more structurally positive fastener system that is capable of obtaining maximum gasket compression. JCM All Stainless Steel Universal Clamp Couplings with “Turbo Torque” provide the means of making the clamp conform to the pipe and performing as never before. Advanced design features include:

Low Profile Cast Stainless Steel Lugs - with mutually supporting sliding fingers provide distortion free tightening over a wide range. Cast Stainless Steel Lugs offer corrosion resistance for hot and acidic environments.

Positive Attachment - of the stainless band to lugs eliminates band pull out and mechanical weakness at this critical point. Allow “Turbo Torque” capabilities to ensure permanent repairs on high pressure applications

Larger Bolts - for greater torque rating are provided on 10” clamps and larger the 3/4” bolts have bolt torque capability in excess of 100 ft. lbs allowing the JCM 131 to go beyond the “standard installation.”

JCM Series 130 Stainless Steel Universal Clamp Couplings Nominal sizes 1-1/2” - 8” have 5/8” bolts Nominal sizes 10” and larger 3/4” bolts

Balanced, low profile CF-8 Cast Stainless Steel Lugs with mutually supporting sliding fingers provide distortion free tightening over a wide range. Stainless Steel lugs offer corrosion resistance and the most efficient method of transfer of energy from the fastener attachment directly to compression of the gasket.

Corrosion resistant stainless steel band conforms to pipe irregularities, maintaining sealing pressure over the entire gasket area. Design criteria requires gauge thickness increase with clamp size. This is just one of the design points which enables JCM Universal Clamp Couplings to withstand the internal forces involved with large pipe repair.

Positive attachment of stainless band to lugs eliminates band pull out and mechanical weakness at this critical point. This structurally sound fabrication design element also allows the high torque capabilities to ensure permanent repair on high pressure applications.

Gridded gasket with long tapered ends and recessed bridge plate assures even gasket pressure throughout the range - without wrinkling or crimping. Diamond Gridded Gasket 1/4” Thick (JCM standard on nominal sizes 3” and larger) adapts to pitted or uneven pipe surfaces to completely seal damaged areas.

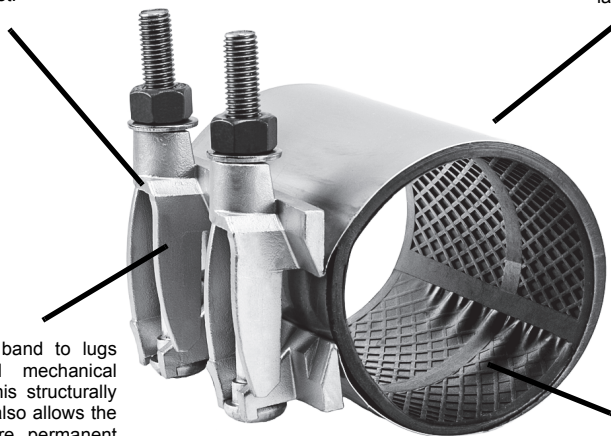
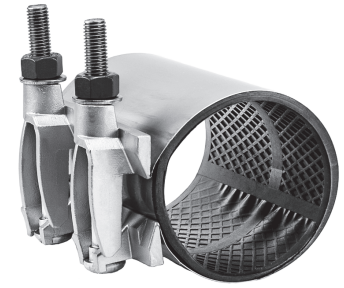


Image Reflects 6” Clamp Width

Meets ANSI/AWWA C230 Stainless-Steel Full-Encirclement Repair and Service Connection Clamps

JCM 131 All Stainless Steel Universal Clamp Couplings



JCM 131 All Stainless Steel Clamp Coupling with larger bolts and heavier lug - especially for piping systems that are exposed to hot soils or corrosive environments. JCM All Stainless Clamps provide the corrosion resistance of stainless to this means of repairing and connecting pipe.

Nom. Pipe Size (IN.)	Clamp O.D. Range (IN.)	131 Stainless Steel Universal Clamp	Clamp Width - Approximate Weight						
			6"	7"	12"	15"	18"	24"	30"
			Lbs.#	Lbs.#	Lbs.#	Lbs.#	Lbs.#	Lbs.#	Lbs.#
1-1/2	1.88 - 2.15	0190	•	-	•	-	-	-	-
			5#		10#				
2 - 2-1/2	2.35 - 2.63 2.70 - 3.13	0238 0275	•	•	•	•	-	-	-
			5#	6#	10#	12#			
3	3.46 - 3.70 3.73 - 4.13	0350 0400	•	•	•	•	-	-	-
			6#	7#	11#	13#			
4	4.45 - 4.75 4.74 - 5.14 4.95 - 5.35 5.22 - 5.62	0450 0480 0500 0525	•	•	•	•	•	•	•
			6#	7#	12#	14#	18#	24#	28#
6	5.95 - 6.35 6.56 - 6.96 6.85 - 7.25 7.05 - 7.45 7.45 - 7.85	0600 0663 0690 0710 0745	•	•	•	•	•	•	•
			7#	8#	13#	16#	21#	26#	31#
8	7.95 - 8.35 8.54 - 8.94 8.99 - 9.39 9.27 - 9.67 9.90 - 10.30	0800 0863 0905 0940 1000	•	•	•	•	•	•	•
			8#	9#	15#	19#	24#	30#	38#
8 - 10	10.60 - 11.00 11.04 - 11.44 11.34 - 11.74 11.75 - 12.15 12.00 - 12.40	1075 1110 1140 1175 1200	-	•	•	•	•	•	•
				15#	26#	31#	39#	42#	60#
12	12.60 - 13.02 13.10 - 13.50 13.40 - 13.80 13.70 - 14.10 14.00 - 14.40	1275 1320 1340 1370 1400	-	•	•	•	•	•	•
				17#	28#	34#	42#	56#	68#
Number of Bolts			2	2	4	4	6	8	10

HOW TO ORDER

- Determine O.D. of pipe.
- Select proper clamp O.D. range and band width.
- Determine Model Number.
- Specify clamp number.
Example: To fit Cast Iron pipe, 6.90 O.D. with 6" width, order: 131-0690-6

Clamps do not prevent lateral movement of pipe. Applications in which the pipe may move out of the clamp, proper anchorage of the pipe must be provided.

Available Options Upon Request Models 131-132

- Pipe sizes and ranges not listed
- Conductive Buttons
- Specialty Gaskets
- Tapped clamps, see page 18
- Other Sizes and Ranges

