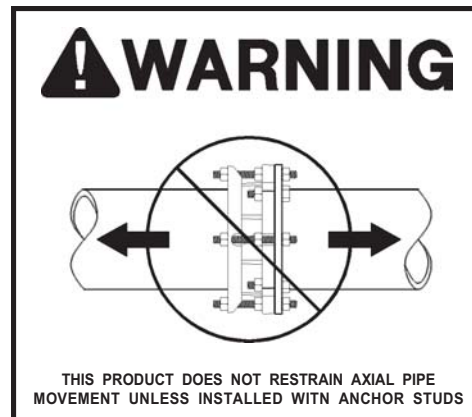


TYPE 912-9
FLANGED COUPLING ADAPTOR (FCA)
INSTALLATION INSTRUCTIONS

Pipe Stiffeners are required when using these products on polyethylene pipe (P.E. Pipe)

- 1) Clean outside surface of pipe approximately 12 inches from end of pipe. Be sure gasket bearing surface is free of blemishes that may impair seal.
- 2) Lubricate pipe and face of gasket with soap & water, use a suitable anti-freeze if weather is below freezing.
- 3) Place follower flange, gasket and adapter body (in that order) on spigot end of pipe. (see view)
- 4) Bolt adapter body to companion flange using standard bolts, and tighten until snug. (3" FCA does not have standard bolts so skip step 4.)
- 5) Thread first nut on all-thread and adjust until all-thread extends through companion flange enough for second nut. Thread second nut on back side of companion flange and finger tighten.
- 6) Slide gasket against adapter body gasket seat and slide follower gland over gasket and all-threads. Thread third nut onto end of all-thread.
- 7) After the follower flange is in place, torque all the nuts and bolts on the companion flange end of the FCA. (the first and second nut act as a double nut to stop all-thread from rotating.)
- 8) Torque the follower flange nuts to the recommended torques listed below.

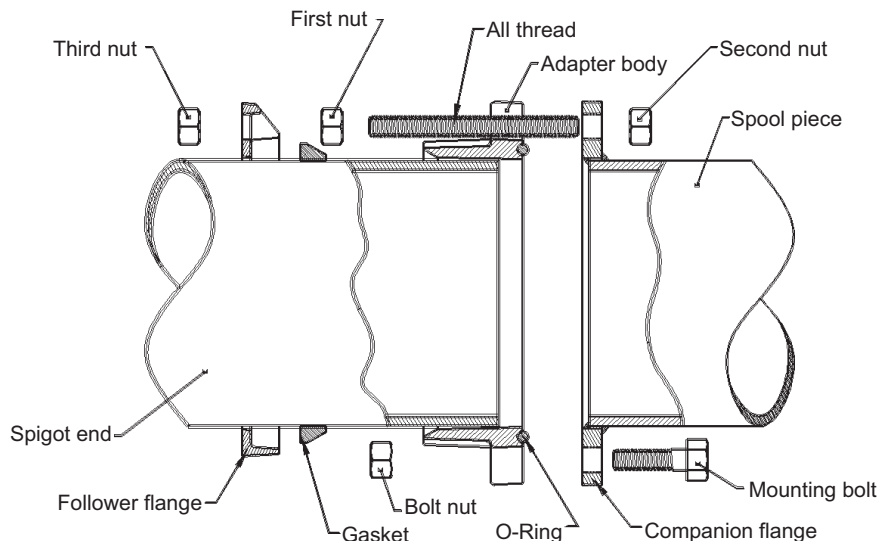
3" & 4"	70 ft. lbs.
6" & 8"	80 ft. lbs.
10" & 12"	90 ft. lbs.
- 9) Recheck all torques after fluid pressure is applied and re-torque if required.
- 10) Follow standard installation procedure for 912's making sure all bolts are torqued. Pipe must be inserted a minimum of 1/2" past the anchor stud boss. (Pipe cannot be moved after anchor studs are installed).



RECOMMENDED GAP BETWEEN PIPE END AND COMPANION FLANGE

<u>Max.</u>	<u>Min.</u>
1"	1/2"

MAXIMUM PIPE DEFLECTION 2° WITH 3" PIPE ENGAGEMENT



*** CONTINUE WITH NOTES 10 THRU 14 ONLY IF FCA CONTAINS ANCHOR STUDS.**

- 11) Thread standard 1/2" NPT pipe nipple into the anchor stud boss.
- 12) Using the pipe nipple as a drill guide, drill a 41/64" (.641) diameter hole completely through the pipe.
- 13) Remove pipe nipple and install the anchor stud.
- 14) Repeat above procedure for each anchor stud.

OLD STYLE 912 FLANGED COUPLING ADAPTOR (FCA) INSTALLATION INSTRUCTIONS

Pipe Stiffeners are required when using these products on polyethylene pipe (P.E. Pipe)

- 1) Clean surface from end of pipe to a distance equal to the length of the adaptor body plus three inches. Be sure gasket bearing surface is free of blemishes that may impair seal.
- 2) Lubricate pipe and face of gasket with soap & water, use a suitable anti-freeze if weather is below freezing.
- 3) Place follower flange, gasket and adaptor body (in that order) on spigot end of pipe.
- 4) Bolt adaptor body to companion flange.
- 5) Slide beveled gasket into position against adaptor gasket cavity. Bring follower flange into place.
- 6) Install follower flange bolts and torque to 50 ft-lbs. initially. Final torque bolts to 70 ft-lbs. for 5/8" bolts and 90 ft-lbs. for 3/4" bolts. Be sure all bolts are brought up to the recommended torque.
- 7) Recheck all torques after fluid pressure is applied and re-torque if required.



RECOMMENDED GAP BETWEEN PIPE END AND COMPANION FLANGE

BODY LENGTH OF ADAPTOR 3" TO 4"	GAP	
	MAX.	MIN.
	1"	1/2"

MAXIMUM PIPE DEFLECTION 2° WITH 3" PIPE ENGAGEMENT

*** CONTINUE WITH NOTES 8 THRU 12 ONLY IF FCA CONTAINS ANCHOR STUDS.**

- 8) Follow standard installation procedure above for 912 flange coupling adaptors. Pipe end must be a minimum of 1" past the anchor stud boss. (Pipe cannot be moved after anchor studs are installed).
- 9) Screw a standard 1/2" NPT or 1" NPT pipe nipple (depending on size of anchor stud) into the anchor stud boss.
- 10) Using the pipe nipple as a drill guide, drill a 41/64" (for 5/8" anchor studs) or 1-3/64" (for 1" anchor studs) diameter hole completely through the pipe.
- 11) Remove pipe nipple and install the anchor stud. Use suitable pipe sealant on anchor stud threads, such as teflon tape, pipe dope or anaerobic thread locker.
- 12) Repeat above procedure for each anchor stud.