

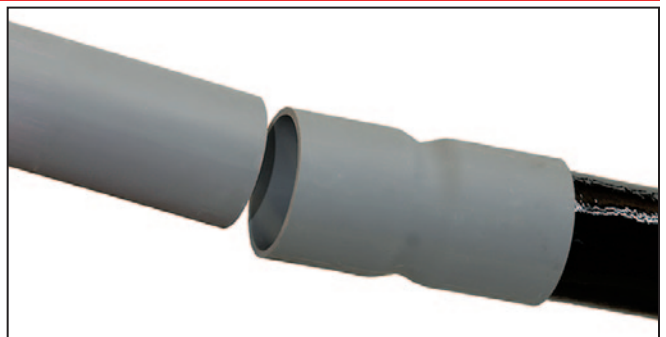
# Champion Fiberglass No Burn Through Fiberglass Elbows



Standard PVC Coupling

Deep Socket PVC Coupling

Easy to Assemble



# Champion Fiberglass Elbows



## The Optimum Solution

Champion Fiberglass Elbows are being used in more applications. Utilities, electrical contractors, and specifying engineers have discovered the benefits of using our fiberglass elbows.

- **Low Coefficient of Friction.** Consistently one of the lowest coefficient of friction numbers of any conduit system.
- **No Burn Through.** A low coefficient of friction and a single circuit winding process keeps cables from burning through the fiberglass elbow and damaging the cable.
- **Easy to Install.** When ordered with two deep socket PVC couplings, the fiberglass elbows are easily glued in place using PVC glue.
- **Light Weight.** Example: 4" 90° x 36" radius elbow  
8.5 lbs – fiberglass w/ 2 PVC couplings  
64 lbs – galvanized rigid steel  
62 lbs – PVC coated steel
- **Excellent Corrosion Resistance.** Broadest range of corrosion resistance for all conduit systems.
- **Excellent Insulator.** Because fiberglass conduit is non-conductive, grounding bushings and exothermic grounding are not required for protection during a cable fault.
- **Handles Low Temperatures.** Fiberglass maintains its mechanical properties to -60°F.
- **UV Stable.** Fiberglass maintains its mechanical properties in the sunlight.
- **Cost Effective.** Comparable installed elbows give Champion Fiberglass elbows the price advantage.
- **UL Listed.** Use our UL 1684 Listed Above Ground fiberglass elbows.
- **Not Affected by Cable Faults.** Will not melt the fiberglass elbow or weld the cable to the fiberglass elbow.

Contact your local Champion Fiberglass representative at:

## Common Part Numbers w/ 2 PVC Deep Socket Couplings

Size		Description	Part Number
2	SW	45° x 24" radius, above ground	20CSW812D
2	SW	45° x 36" radius, above ground	20CSW822D
2	SW	90° x 24" radius, above ground	20CSW912D
2	SW	90° x 36" radius, above ground	20CSW922D
2½	SW	45° x 24" radius, above ground	25CSW812D
2½	SW	45° x 36" radius, above ground	25CSW822D
2½	SW	90° x 24" radius, above ground	25CSW912D
2½	SW	90° x 36" radius, above ground	25CSW922D
3	SW	45° x 36" radius, above ground	30CSW822D
3	SW	45° x 48" radius, above ground	30CSW832D
3	SW	90° x 36" radius, above ground	30CSW922D
3	SW	90° x 48" radius, above ground	30CSW932D
4	SW	45° x 36" radius, above ground	40CSW822D
4	SW	45° x 48" radius, above ground	40CSW832D
4	SW	90° x 36" radius, above ground	40CSW922D
4	SW	90° x 48" radius, above ground	40CSW932D
4	HW	45° x 36" radius, above ground	40CHW822D
4	HW	45° x 48" radius, above ground	40CHW832D
4	HW	90° x 36" radius, above ground	40CHW922D
4	HW	90° x 48" radius, above ground	40CHW932D
5	MW	45° x 48" radius, above ground	50CMW832D
5	MW	45° x 60" radius, above ground	50CMW842D
5	MW	90° x 48" radius, above ground	50CMW932D
5	MW	90° x 60" radius, above ground	50CMW942D
5	HW	45° x 48" radius, above ground	50CHW832D
5	HW	45° x 60" radius, above ground	50CHW842D
5	HW	90° x 48" radius, above ground	50CHW932D
5	HW	90° x 60" radius, above ground	50CHW942D
6	MW	45° x 48" radius, above ground	60CMW832D
6	MW	45° x 60" radius, above ground	60CMW842D
6	MW	90° x 48" radius, above ground	60CMW932D
6	MW	90° x 60" radius, above ground	60CMW942D
6	HW	45° x 48" radius, above ground	60CHW832D
6	HW	45° x 60" radius, above ground	60CHW842D
6	HW	90° x 48" radius, above ground	60CHW932D
6	HW	90° x 60" radius, above ground	60CHW942D

### Elbows are available in:

- Sizes ¾" to 12"
- Other radii including very large radii
- Other angles as standard (11¼°, 22½°, 30°)
- Below Ground or Above Ground
- Plain end for fiberglass conduit systems
- Various factory installed fiberglass fittings
- Standard PVC fittings on some sizes

For a complete catalog go to: [www.championfiberglass.com](http://www.championfiberglass.com)