

DRYCONN®

WATERPROOF CONNECTORS

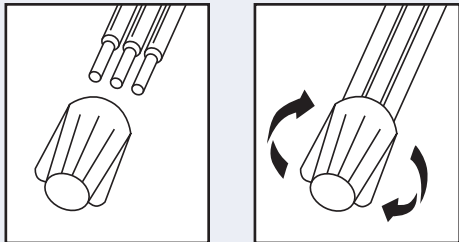
Filled Connectors for Outdoor Use



Installation Instructions

IMPORTANT: Turn off power before installing or removing connector. Product to be used in accordance with local and national codes.

1. Strip wires 11/16" to 3/4".
2. Align frayed strands or conductors.
3. Do not pre-twist. Place stripped wires together with ends even, but lead stranded wire slightly.
4. Twist connector onto wires pushing firmly until hand-tight. Do not over torque.
5. Swipe excess sealant in and around conductors. Do not reuse.



DryConn® Aqua/Blue

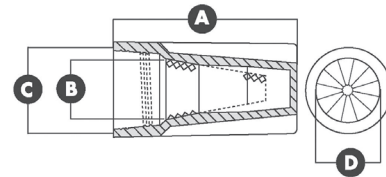
Catalog #	Selling Unit
62310	Card of 3
62325	Bag of 15
62335	Bag of 50
62340	Bag of 250

PRODUCT SPECIFICATIONS & MEASUREMENTS

Max. Voltage: 600V (1,000V in fixtures and signs)
 Connector Size: 13/16" x 1 9/16"
 Wire Type: Copper/Copper
 Wire Range: Min #14/Max #6
 Temperature Rating: 105°C (221°F)
 Silicone Sealant: -45°F to 400°F
 UL Designation: KB

Measurements (Inches):

A - 1.563 B - 0.516
 C - 0.813 D - 0.656



- UL 50 tested for watertight/raintight applications
- UL listed and CSA certified as a Pressure Type Connector

See reverse side for a complete listing of wire combinations.

DryConn® Aqua/Blue

Filled Connectors For Outdoor Use

600V Wire Combinations

4-6 #14	1 #10 w/2 #12 & 1-3 #14	1 #8 w/2 #10 & 1-2 #12
3-6 #12	1 #10 w/3 #12 & 1-2 #14	1 #8 w/1-3 #10
2-5 #10	1 #10 w/4 #12 & 1 #14	2 #6 w/1 #12 or 14
2-3 #8	1 #10 w/2-4 #12	1 #6 w/1-4 #12 or 14
1-2 #6	3 #8 w/1-2 #14	1 #6 w/1 #12 & 1-4 #14
4 #12 w/1 #14	2 #8 w/1-4 #14	1 #6 w/2 #12 & 1-3 #14
3 #12 w/1-3 #14	2 #8 w/1 #12 & 1-3 #14	1 #6 w/3 #12 & 1-2 #14
2 #12 w/2-4 #14	2 #8 w/2 #12 & 1 #14	1 #6 w/1 #10 & 1-4 #14
1 #12 w/4-5 #14	2 #8 w/1 #10 & 1-3 #14	1 #6 w/2 #10 & 1-2 #14
4 #10 w/1 #12 & 1 #14	2 #8 w/1-3 #12	1 #6 w/1 #10 & 1-3 #12
4 #10 w/1 #12	2 #8 w/1 #10 & 1-2 #12	1 #6 w/2 #10 & 1 #12
3 #10 w/1-3 #14	2 #8 w/1-2 #10	1 #6 w/1-3 #10
3 #10 w/1 #12 & 1-2 #14	1 #8 w/1-5 #12 or 14	1 #6 w/1 #8 & 1-4 #14
3 #10 w/2 #12 & 1 #14	1 #8 w/1 #12 & 1-4 #14	1 #6 w/1 #8 & 1-2 #12
2 #10 w/1-4 #14	1 #8 w/2 #12 & 1-3 #14	1 #6 w/1 #8 & 1 #10
2 #10 w/1 #12 & 1-3 #14	1 #8 w/3 #12 & 1-2 #14	1 #6 w/1-2 #8
2 #10 w/2 #12 & 1-2 #14	1 #8 w/4 #12 & 1 #14	
2 #10 w/3 #12 & 1 #14	1 #8 w/1 #10 & 1-4 #14	
2 #10 w/1-3 #12	1 #8 w/2 #10 & 1-3 #14	
1 #10 w/3-5 #14	1 #8 w/3 #10 & 1 #14	
1 #10 w/1 #12 & 1-4 #14	1 #8 w/1 #10 & 1-4 #12	

Weights and Measures

Shelfpack Qty.	Part #	Wt.	W	H	L	Cube	Master Qty.	Weight	W	H	L	Cube	UPC 7-19362
10 cards	62310	0.92	5.50	5.63	3.75	0.0671	100	10.34	11.25	6.38	19.38	0.80	62310-8
10 bags	62325	3.74	5.75	5.25	9.00	0.1572	100	38.52	12	15.25	18.50	1.96	62325-2
1 bag	62335	1.16	6	11.5	1	0.0399	5	6.20	9.38	3.50	12.00	0.23	62335-1
1 bag	62340	5.46	10	15	2.25	0.1953	5	28.64	12.75	6.50	20.75	1	62340-5

In the chart above, width, height, and length are represented in inches. Weight is represented as pounds.