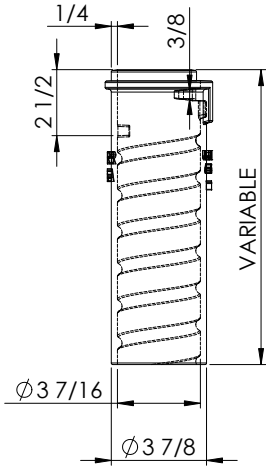


### CAST IRON SCREW TYPE VALVE BOXES

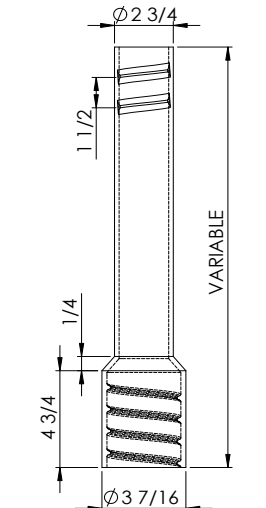
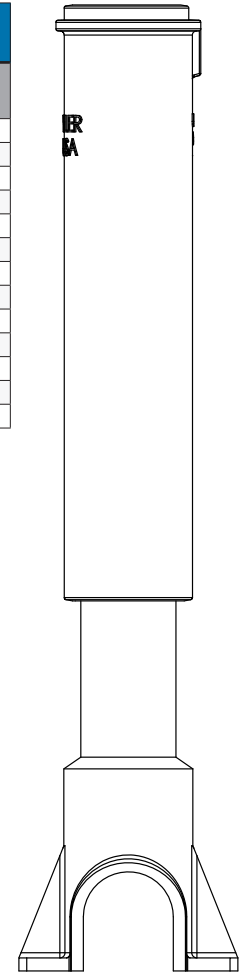
for 1 1/4" through 2" curbstops, enlarged base

Accommodates 2" curbstops, 2 1/2 shaft - screw type



6500 SERIES, SCREW TYPE ASSEMBLIES WITH WATER LID					
BOX (components)	UPC 670610	Weight	Extensions In inches	** (ND) UPC 670610	Weight
89-A (12T & 12B)	146681	20	15-21	111863	20
90-8 (12T & 15B)	146742	21	18-24	111870	21
90-C (15T & 15B)	146803	22	21-27	111887	24
91-C (15T & 21B)	146865	24	24-33	111894	26
92-C (15T & 27B)	146926	26	30-39	111900	28
92-D (18T & 27B)	146988	28	30-42	111917	29
93-D (18T & 33B)	147046	32	36-48	111924	33
93-E (24T & 33B)	147114	37	36-54	111931	39
94-E (24T & 39B)	147183	41	42-60	111948	44
95-E (30T & 39B)	147251	44	41-64	111955	49
100-E (24T & 21B & #154 Ext)	147312	50	54-72	111832	55
100-F (30T & 21B & #154 Ext)	147381	53	54-78	111849	59
101-F (30T & 27B & #154 Ext)	147459	55	60-84	111856	61

\*\* D=Domestic ND=Import

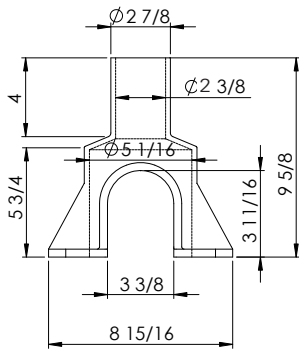
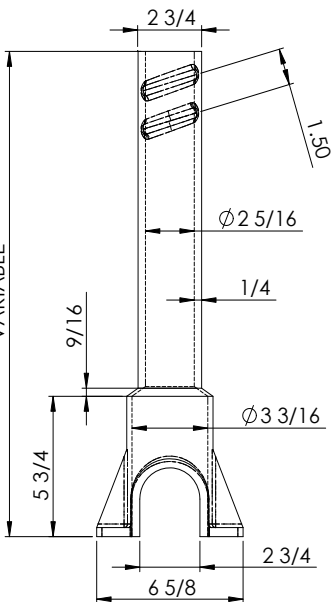


TOP SECTION WITH WATER LID				
Item	**D-UPC 670610	Weight	** (ND) UPC 670610	Weight
12T	147510	11	112006	12
15T	147589	12	112013	15
18T	147640	14	112020	16
24T	147701	19	112037	22
30T	147763	22	112044	27

\*\* D=Domestic ND=Import

BOTTOM ONLY				
Item	**D-UPC 670610	Weight	** (ND) UPC 670610	Weight
12B	144670	9	136941	8
15B	144687	10	111788	9
21B	144694	12	111795	11
27B	144700	14	111801	13
33B	144717	18	111818	17
39B	144724	22	111825	22

\*\* D=Domestic ND=Import



6500 PARTS					
Item	**D-UPC 670610	Weight	** (ND) UPC 670610	Weight	Height Increase
151 Extension	144762	7	111962	9	9
152 Extension	144779	12	111979	14	16
153 Extension	144786	17	111786	21	28
154 Extension	144793	19	111993	21	30
Enlarged Base	144806	8	136934	11	6
2 1/2" Water Lid	144830	1	-	-	-
Brass Screw	144816	-	-	-	-
Wrench	144908	0.5	-	-	-
2 1/2" Repair Lid Outside cover	385518	4.5	-	-	-

\*\* D=Domestic ND=Import

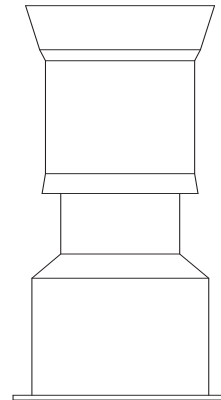
## CAST IRON TWO-PIECE VALVE BOXES for 4" through 12" valves, 5 1/4 shaft, screw type

Tyler Union Valve boxes are available either assembled or as individual tops and bottoms.

**NOTE:** Domestic valve boxes available in Heavy Duty only. Non-Domestic available in Standard or Heavy Duty.

6850 ASSEMBLED BOXES (LESS LID)						
Box (Components)	Extension Height	** (D-HD) UPC 670610	** (ND-HD) UPC 670610	Weight	** (ND-Std) UPC 670610	Weight
461-S (10T + 15B)	19-22	145776	502098	50	112280	35
462-S (10T + 24B)	27-32	145783	502104	58	112297	43
562-S (16T + 24B)	27-37	145790	502111	71	112303	50
563-S (16T + 30B)	33-43	145752	-	78	112310	60
564-S (16T + 36B)	39-50	145806	502128	85	112327	66
662-S (26T + 30B)	36-52	145769	-	93	112341	76
664-S (26T + 36B)	39-60	145813	-	100	112358	82
665-S (26T + 24B)	39-63	375296	-	87	-	-
666-S (26T+24B+60 Ext)	53-71	145820	502135	128	112365	95
668-S (26T+36B+60 Ext)	64-82	145837	-	136	112372	111

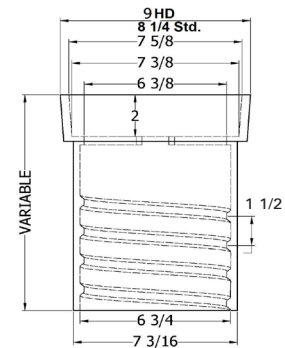
\*\* D = Domestic ND = Import HD = Heavy Duty Weight Std. = Standard Weight



6850 Assembly  
(Less Lid)

6850 INDIVIDUAL TOPS (LESS LID)							
Box	Top length	** (D-HD) UPC 670610	Weight	** (ND-HD) UPC 670610	Weight	** (ND-Std) UPC 670610	Weight
461-S	(10T)	144939	22	502142	22	112402	15
462-S	(10T)	144939	22	502142	22	112402	15
562-S	(16T)	144946	36	502159	36	112419	22
563-S	(16T)	144946	36	502159	36	112419	22
564-S	(16T)	144946	36	502159	36	112419	22
662-S	(26T)	144953	51	502166	51	112426	38
664-S	(26T)	144953	51	502166	51	112426	38
666-S	(26T)	144953	51	502166	51	112426	38
668-S	(26T)	144953	51	502166	51	112426	38

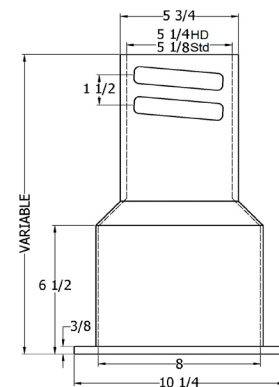
\*\* D = Domestic ND = Import HD = Heavy Duty Weight Std. = Standard Weight



Top

6850 INDIVIDUAL BOTTOMS							
Box	Bottom Length	** (D-HD) UPC 670610	Weight	** (ND-HD) UPC 670610	Weight	** (ND-Std) UPC 670610	Weight
461-S	(15B)	145004	27	502173	27	112242	20
462-S	(24B)	145011	35	502180	35	112259	28
562-S	(24B)	145011	35	502180	35	112259	28
563-S	(30B)	144991	42	502197	42	112266	38
564-S	(36B)	145028	49	502203	49	112273	44
662-S	(30B)	144991	42	502197	42	112266	38
664-S	(36B)	145028	49	502203	49	112273	44
666-S	(24B)	145011	35	502180	35	112259	28
668-S	(36B)	145028	49	502203	49	112273	44
-	(48B)	-	-	-	-	452737	62
-	(60B)	-	-	-	-	452744	85

\*\* D = Domestic ND = Import HD = Heavy Duty Weight Std. = Standard Weight



Bottom

See page 50 for extensions.