

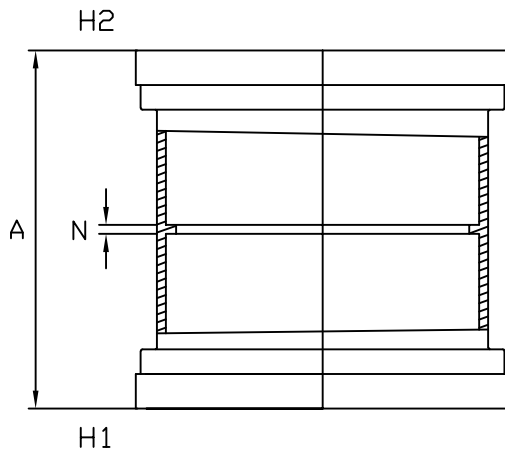


MULTI FITTINGS

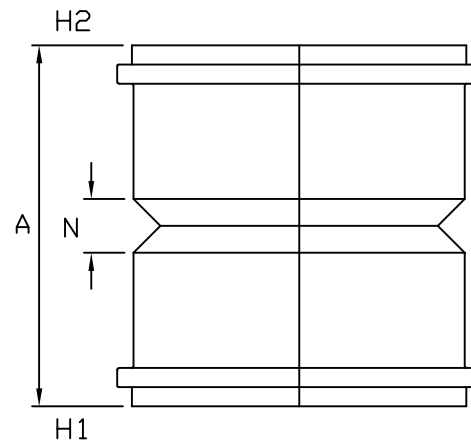
# LAYING LENGTH

ISSUE DATE: OCT 30/17  
SUPERCEDES: SEPT 14/07

## COUPLING (GxG) (WITH PIPE STOP)



INJECTION MOLDED FITTING (M)



FABRICATED FITTING (F)

	SIZE H1xH2	PART NUMBER	A REF.	N REF.
M =	4x4	067434	8. 000	0. 178
M =	6x6	067436	8. 000	0. 250
M =	8x8	067438	10. 000	0. 375
F	10x10	067439	-	-
F	12x12	067440	-	-
P	15x15	067441	-	-
F @	18x18	067442	26. 000	-

NOTE: = Refer to Page HW4 for Hub Detail, Type A  
@ Refer to Page HW5 for Hub Detail, Fabricated