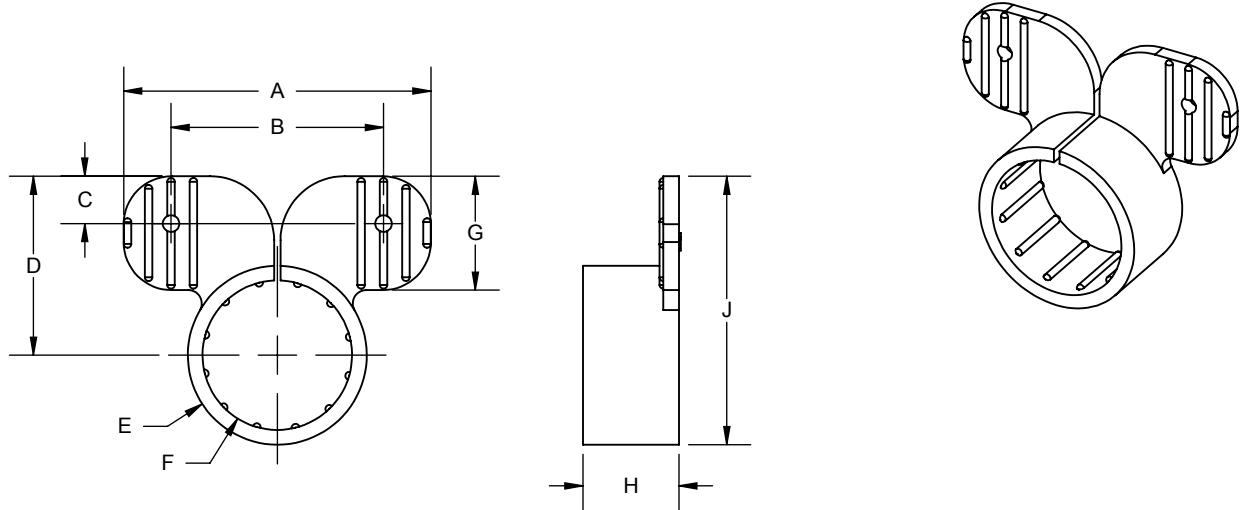


PRODUCT SPECIFICATION DRAWING HOLDRITE® SUSPENSION CLAMP SERIES



| MODEL | SIZE | A | B | C | D | E | F | G | H | J |
|-------|--------|------|------|------|------|-------|-------|------|------|------|
| #221 | 1/2" | 1.93 | 1.45 | 0.25 | 1.00 | Ø.87 | Ø0.68 | 0.63 | 0.75 | 1.48 |
| #222 | 3/4" | 1.93 | 1.45 | 0.25 | 1.13 | Ø1.12 | Ø.95 | 0.64 | 0.75 | 1.70 |
| #223 | 1" | 2.40 | 1.63 | 0.37 | 1.45 | Ø1.40 | Ø1.17 | 0.89 | 0.75 | 2.10 |
| #224 | 1 1/4" | 2.90 | 2.30 | 0.37 | 1.60 | Ø1.65 | Ø1.41 | 0.89 | 0.85 | 2.35 |
| #225 | 1 1/2" | 2.90 | 2.30 | 0.37 | 1.85 | Ø1.92 | Ø1.67 | 0.89 | 1.00 | 2.75 |
| #226 | 2" | 3.40 | 2.30 | 0.37 | 2.10 | Ø2.42 | Ø2.15 | 0.89 | 1.00 | 3.20 |

All dimensions in inches. Dimensions (approximate)

The HOLDRITE #220 Series Suspension Clamps are designed to support 1/2" through 2" tubing. Helps to eliminate noise transfer and isolates against dissimilar metal contact. Compatible with Copper, PEX, CPVC and other tubing.

Product Information:

- Material: Polypropylene, Light Gray.
- Suspension clamp mounts to HOLDRITE Stout Brackets®, #170 Series Brackets, or flush mounted to walls/joists to support Copper, PEX and CPVC tubing

THIS INFORMATION IS PROPRIETARY TO HOLDRITE AND IS SUBJECT TO CHANGE WITHOUT NOTICE. IT MAY NOT BE REPRODUCED IN PART OR WHOLE WITHOUT WRITTEN AUTHORIZATION.

HOLDRITE®

CONVERTING MAKESHIFT METHODS INTO ENGINEERED SOLUTIONSSM

800-321-0316 OR 760-744-6944 / FAX: 760-744-0507 / WWW.HOLDRITE.COM
spec_221 thru 226_RevG

| Product Submittal | |
|--------------------|------|
| Job Name: | |
| Date: | |
| Part Number: | Qty: |
| | |
| Architect / Owner: | |
| Contractor: | |
| Notes: | |
| | |
| | |