

Pipe Fittings NPT Threaded, Ductile Iron

General Description

The TYCO Series 800 Threaded Pipe Fittings and California Tees & Elbows are manufactured from ductile iron. They are stronger and more corrosion resistant than cast iron fittings. The additional strength is provided by the ductile properties and by adding magnesium while the iron is being poured into the final cast shape. Although lighter than standard cast iron, the fittings have an added advantage of being less susceptible to cracking due to their added strength.

The Series 800, California, and Figure 719 Threaded Pipe Fittings are a re-designation for the Central Series 800, California, and Figure 719 Threaded Pipe Fittings.

NOTICE

The Threaded Pipe Fittings described herein must be installed and maintained in compliance with this document, as well as with the applicable standards of the NATIONAL FIRE PROTECTION ASSOCIATION (NFPA), in addition to the standards of any other authorities having jurisdiction. Failure to do so may impair the performance of these devices.

The owner is responsible for maintaining their fire protection system and devices in proper operating condition. Contact the installing contractor or product manufacturer with any questions.

IMPORTANT

Refer to Technical Data Sheet TFP2300 for warnings pertaining to regulatory and health information.

Technical Data

Approvals
UL Listed
FM Approved

Maximum Working Pressure
300 psi (20,7 bar)

Material
Series 800 and California Fittings:
Ductile Iron

Figure 719 Plug:
Cast Iron

Pipe Thread
NPT per ANSI B1.20.1

Installation

Apply TEFLON tape or high quality pipe joint compound on male pipe threads and tighten two to three turns beyond hand tight.

NOTICE

Installers who have not used ductile iron threaded fittings should be instructed that the fittings are stronger than the pipe and overtightening the fitting can create leaks and cause damage to pipe threads. In general, there is about one-half turn difference between cast iron and ductile iron fittings. Apply TEFLON tape or high quality pipe joint compound on the male pipe threads and tighten two to three turns beyond hand tight. If an automatic make-on machine is being used, please exercise caution in setting the machine to the proper parameters prior to tightening fittings onto the male pipe threads.



Limited Warranty

For warranty terms and conditions, visit www.tyco-fire.com.

Ordering Procedure

Contact your local distributor for availability. When placing an order, indicate the full product name and Part Number (P/N).

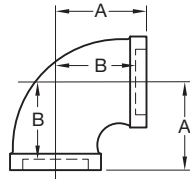


FIGURE 811
90° ELBOW

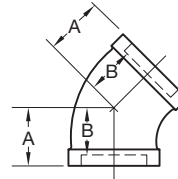


FIGURE 813
45° ELBOW

Nominal Pipe Size	Figure 811				Figure 813			
	ANSI Inches DN	A Inches (mm)	B Inches (mm)	Approx. Weight Lbs. (kg)	Part Number	A Inches (mm)	B Inches (mm)	Approx. Weight Lbs. (kg)
1/2 15	1.13 (28,7)	0.56 (14,2)	0.24 (0,11)	86206	0.88 (22,4)	0.38 (9,7)	0.22 (0,09)	86780
3/4 20	1.31 (33,3)	0.75 (19,0)	0.40 (0,18)	86205	1.00 (25,4)	0.44 (11,2)	0.33 (0,15)	86781
1 25	1.50 (38,1)	0.81 (20,6)	0.64 (0,29)	86200	1.13 (28,7)	0.81 (20,6)	0.48 (0,21)	86280
1-1/4 32	1.75 (44,5)	1.06 (26,9)	0.95 (0,43)	86201	1.31 (33,3)	0.63 (16,0)	0.73 (0,33)	86281
1-1/2 40	1.94 (49,3)	1.19 (30,2)	1.24 (0,56)	86202	1.44 (36,6)	0.69 (17,5)	0.93 (0,42)	86282
2 50	2.25 (57,1)	1.50 (38,1)	1.74 (0,79)	86203	1.68 (42,7)	0.94 (23,9)	1.55 (0,70)	86283
2-1/2 65	2.69 (68,3)	1.56 (39,6)	3.28 (1,49)	86204	1.94 (49,3)	1.00 (25,4)	2.70 (1,22)	86782

TABLE A
FIGURES 811 & 813
NOMINAL DIMENSIONS

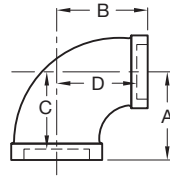
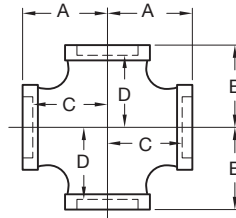


FIGURE 812
90° REDUCING ELBOW

Nominal Pipe Size	Figure 812					
ANSI Inches DN	A Inches (mm)	B Inches (mm)	C Inches (mm)	D Inches (mm)	Approx. Weight Lbs. (kg)	Part Number
3/4 x 1/2 20 x 15	1.19 (30,2)	1.19 (30,2)	0.63 (16,0)	0.63 (16,0)	0.33 (0,15)	86342
1 x 1/2 25 x 15	1.25 (31,8)	1.38 (35,1)	0.56 (14,2)	0.81 (20,6)	0.44 (0,20)	86210
1 x 3/4 25 x 20	1.38 (35,1)	1.44 (36,6)	0.69 (17,5)	0.88 (22,4)	0.53 (0,24)	86211
1-1/4 x 1/2 32 x 15	1.31 (33,3)	1.50 (38,1)	0.63 (16,0)	0.94 (23,9)	0.64 (0,29)	86212
1-1/4 x 3/4 32 x 20	1.44 (36,6)	1.63 (41,4)	0.75 (19,0)	1.06 (26,9)	0.75 (0,34)	86213
1-1/4 x 1 32 x 25	1.56 (39,6)	1.68 (42,7)	0.88 (22,4)	1.00 (25,4)	0.77 (0,35)	86214
1-1/2 x 3/4 40 x 20	1.50 (38,1)	1.75 (44,4)	0.75 (19,0)	1.19 (30,2)	0.95 (0,43)	86221
1-1/2 x 1 40 x 25	1.63 (41,4)	1.81 (46,0)	0.88 (22,4)	1.13 (28,7)	0.99 (0,45)	86215
1-1/2 x 1-1/4 40 x 32	1.81 (46,0)	1.88 (47,8)	1.13 (28,7)	1.19 (30,2)	1.14 (0,52)	86216
2 x 3/4 50 x 20	1.63 (41,4)	1.94 (49,3)	0.88 (22,4)	1.38 (35,1)	1.39 (0,63)	86217
2 x 1 50 x 25	1.75 (44,4)	2.06 (52,3)	2.00 (50,8)	1.31 (33,3)	1.58 (0,72)	86218
2 x 1-1/2 50 x 40	2.00 (50,8)	2.19 (55,6)	1.25 (31,8)	1.44 (36,6)	1.67 (0,76)	86220
2-1/2 x 2 65 x 50	2.38 (60,5)	2.63 (66,8)	1.25 (31,8)	1.88 (47,8)	3.01 (1,36)	86762

TABLE B
FIGURE 812
NOMINAL DIMENSIONS



**FIGURE 817
 CROSS**

Nominal Pipe Size	Figure 817					
	ANSI Inches DN	A Inches (mm)	B Inches (mm)	C Inches (mm)	D Inches (mm)	Approx. Weight Lbs. (kg)
1 25	1.50 (38,1)	1.50 (38,1)	0.81 (20,6)	0.81 (20,6)	0.97 (0,44)	86284
1-1/4 32	1.75 (44,4)	1.75 (44,4)	1.06 (26,9)	1.06 (27,0)	1.59 (0,72)	86285
1-1/2 40	1.94 (49,3)	1.94 (49,3)	1.19 (30,2)	1.19 (30,2)	1.89 (0,86)	86286
2 50	2.25 (57,1)	2.25 (57,1)	1.50 (38,1)	1.50 (38,1)	2.93 (1,33)	86287
1-1/4 x 1-1/4 x 1 x 1 32 x 32 x 25 x 25	1.69 (42,9)	1.56 (39,6)	1.00 (25,4)	0.88 (22,4)	1.25 (0,56)	86289
1-1/2 x 1-1/2 x 1 x 1 40 x 40 x 25 x 25	1.81 (46,0)	1.63 (41,4)	1.06 (26,9)	1.94 (49,3)	1.48 (0,71)	86322
2 x 2 x 1 x 1 50 x 50 x 25 x 25	2.00 (50,8)	1.75 (44,4)	1.25 (31,8)	1.06 (26,9)	2.64 (1,20)	86291

**TABLE C
 FIGURE 817
 NOMINAL DIMENSIONS**

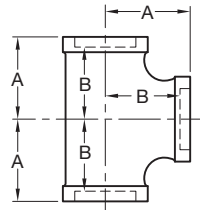


FIGURE 814
IRON TEE

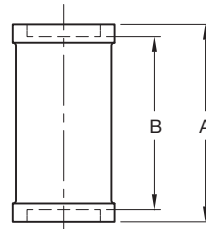


FIGURE 818
STRAIGHT COUPLING

Nominal Pipe Size	Figure 814				Figure 818			
	ANSI Inches DN	A Inches (mm)	B Inches (mm)	Approx. Weight Lbs. (kg)	Part Number	A Inches (mm)	B Inches (mm)	Approx. Weight Lbs. (kg)
1/2 15	1.13 (28,7)	0.56 (14,2)	0.33 (0,15)	86340	1.38 (35,1)	0.31 (7,9)	0.18 (0,08)	72779
3/4 20	1.31 (33,3)	0.75 (19,0)	0.50 (0,23)	86341	1.63 (41,4)	0.56 (14,0)	0.26 (0,11)	72778
1 25	1.50 (38,1)	0.81 (20,6)	0.85 (0,38)	86230	1.75 (44,4)	0.38 (9,7)	0.44 (0,20)	72755
1-1/4 32	1.75 (44,4)	1.06 (26,9)	1.30 (0,59)	86231	2.00 (50,8)	0.56 (14,0)	0.54 (0,24)	72754
1-1/2 40	1.94 (49,3)	1.19 (30,2)	1.63 (0,74)	86232	2.19 (55,6)	0.75 (19,0)	0.71 (0,32)	72753
2 50	2.25 (57,1)	1.50 (38,1)	2.63 (1,19)	86233	2.63 (66,8)	1.13 (28,7)	1.15 (0,52)	72752
2-1/2 65	2.69 (68,3)	1.56 (39,6)	4.55 (2,06)	86234	3.00 (76,2)	0.75 (19,0)	2.29 (1,04)	72758

TABLE D
FIGURES 814 & 818
NOMINAL DIMENSIONS

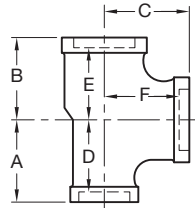


FIGURE 815
REDUCING TEE

Nominal Pipe Size	Figure 815							Approx. Weight Lbs. (kg)	Part Number
	ANSI Inches DN	A Inches (mm)	B Inches (mm)	C Inches (mm)	D Inches (mm)	E Inches (mm)	F Inches (mm)		
3/4 x 3/4 x 1/2 20 x 20 x 15	1.19 (30,2)	1.19 (30,2)	1.25 (31,8)	0.63 (16,0)	0.63 (16,0)	0.69 (17,5)	0.46 (0,21)	86235	
3/4 x 3/4 x 1 20 x 20 x 25	1.44 (36,6)	1.44 (36,6)	1.38 (35,1)	0.88 (22,4)	0.88 (22,4)	0.69 (17,5)	0.68 (0,31)	86755	
1 x 1/2 x 1 25 x 15 x 25	1.50 (38,1)	1.38 (35,1)	1.50 (38,1)	0.81 (20,6)	0.81 (20,6)	0.81 (20,6)	0.70 (0,32)	86236	
1 x 3/4 x 1/2 25 x 20 x 15	1.25 (31,8)	1.19 (30,2)	1.38 (35,1)	0.56 (14,2)	0.63 (16,0)	0.81 (20,6)	0.63 (0,28)	86756	
1 x 3/4 x 3/4 25 x 20 x 20	1.38 (35,1)	1.31 (33,3)	1.44 (36,6)	0.69 (17,5)	0.75 (19,0)	0.88 (22,4)	0.68 (0,31)	86757	
1 x 3/4 x 1 25 x 20 x 25	1.50 (38,1)	1.44 (36,6)	1.50 (38,1)	0.81 (20,6)	0.88 (22,4)	0.81 (20,6)	0.77 (0,35)	86237	
1 x 1 x 1/2 25 x 25 x 15	1.25 (31,8)	1.25 (31,8)	1.38 (35,1)	0.56 (14,3)	0.56 (14,3)	0.81 (20,6)	0.66 (0,30)	86238	
1 x 1 x 3/4 25 x 25 x 20	1.38 (35,1)	1.38 (35,1)	1.44 (36,6)	0.69 (17,5)	0.69 (17,5)	0.88 (22,4)	0.73 (0,33)	86239	
1 x 1 x 1-1/4 25 x 25 x 32	1.69 (42,9)	1.69 (42,9)	1.56 (39,6)	1.00 (25,4)	1.00 (25,4)	0.88 (22,4)	0.97 (0,44)	86240	
1 x 1 x 1-1/2 25 x 25 x 40	1.81 (46,0)	1.81 (46,0)	1.63 (41,4)	1.13 (28,6)	1.13 (28,6)	0.88 (22,4)	1.14 (0,52)	86241	
1-1/4 x 1 x 1/2 32 x 25 x 15	1.94 (49,2)	1.25 (31,8)	1.56 (39,6)	0.63 (15,9)	0.56 (14,3)	1.00 (25,4)	0.81 (0,37)	86242	
1-1/4 x 1 x 3/4 32 x 25 x 20	1.44 (36,6)	1.38 (35,1)	1.62 (41,2)	0.75 (19,0)	0.69 (17,5)	1.06 (27,0)	0.90 (0,41)	86243	
1-1/4 x 1 x 1 32 x 25 x 25	1.56 (39,6)	1.50 (38,1)	1.69 (42,9)	0.88 (22,4)	0.81 (20,6)	1.00 (25,4)	1.03 (0,47)	86244	
1-1/4 x 1 x 1-1/4 32 x 25 x 32	1.75 (44,4)	1.69 (42,9)	1.75 (44,4)	1.06 (27,0)	1.00 (25,4)	1.06 (27,0)	1.10 (0,50)	86245	
1-1/4 x 1 x 1-1/2 32 x 25 x 40	1.88 (47,6)	1.81 (46,0)	1.81 (46,0)	1.19 (30,1)	1.13 (28,6)	1.06 (27,0)	1.43 (0,65)	86246	
1-1/4 x 1-1/4 x 1/2 32 x 32 x 15	1.38 (35,1)	1.38 (35,1)	1.56 (39,6)	0.69 (17,5)	0.69 (17,5)	1.00 (25,4)	0.87 (0,39)	86247	
1-1/4 x 1-1/4 x 3/4 32 x 32 x 20	1.44 (36,6)	1.44 (36,6)	1.63 (41,4)	0.75 (19,0)	0.75 (19,0)	1.06 (27,0)	0.96 (0,43)	86248	
1-1/4 x 1-1/4 x 1 32 x 32 x 25	1.56 (39,6)	1.56 (39,6)	1.69 (42,9)	0.88 (22,4)	0.88 (22,4)	1.00 (25,4)	1.10 (0,50)	86249	
1-1/4 x 1-1/4 x 1-1/2 32 x 32 x 40	1.88 (47,6)	1.88 (47,6)	1.81 (46,0)	1.81 (46,0)	1.81 (46,0)	1.06 (27,0)	1.50 (0,68)	86250	
1-1/4 x 1-1/4 x 2 32 x 32 x 50	2.13 (54,1)	2.13 (54,1)	2.00 (50,8)	1.44 (36,6)	1.44 (36,6)	1.13 (28,6)	2.00 (0,91)	86251	
1-1/2 x 1 x 1/2 40 x 25 x 15	1.44 (36,6)	1.31 (33,3)	1.69 (42,9)	0.69 (17,5)	0.63 (15,9)	1.13 (28,6)	0.97 (0,44)	86252	
1-1/2 x 1 x 3/4 40 x 25 x 20	1.50 (38,1)	1.38 (35,1)	1.75 (44,4)	0.75 (19,0)	0.69 (17,5)	1.19 (30,2)	1.14 (0,52)	86253	
1-1/2 x 1 x 1 40 x 25 x 25	1.63 (41,4)	1.50 (38,1)	1.81 (46,0)	0.88 (22,4)	0.81 (20,6)	1.13 (28,7)	1.14 (0,52)	86254	
1-1/2 x 1 x 1-1/2 40 x 25 x 40	1.94 (49,3)	1.81 (46,0)	1.94 (49,2)	1.19 (30,2)	1.13 (28,6)	1.19 (30,2)	1.52 (0,69)	86256	

TABLE E (1 OF 2)
FIGURE 815
NOMINAL DIMENSIONS

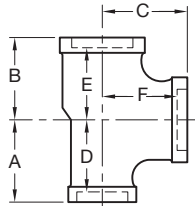


FIGURE 815
REDUCING TEE

Nominal Pipe Size	Figure 815							Approx. Weight Lbs. (kg)	Part Number
	ANSI Inches DN	A Inches (mm)	B Inches (mm)	C Inches (mm)	D Inches (mm)	E Inches (mm)	F Inches (mm)		
1-1/2 x 1-1/4 x 1/2 40 x 32 x 15	1.44 (36,6)	1.31 (33,3)	1.69 (42,9)	0.69 (17,5)	0.63 (16,0)	1.13 (28,7)	1.03 (0,47)	86257	
1-1/2 x 1-1/4 x 3/4 40 x 32 x 20	1.50 (38,1)	1.44 (36,6)	1.75 (44,5)	0.75 (19,0)	0.75 (19,0)	1.19 (30,1)	1.10 (0,50)	86258	
1-1/2 x 1-1/4 x 1 40 x 32 x 25	1.63 (41,4)	1.56 (39,7)	1.81 (46,0)	0.88 (22,4)	0.88 (22,4)	1.13 (28,7)	1.31 (0,59)	86259	
1-1/2 x 1-1/4 x 2 40 x 32 x 50	2.19 (55,6)	2.13 (54,1)	2.00 (50,8)	1.44 (36,6)	1.44 (36,6)	1.25 (57,1)	1.94 (0,88)	86260	
1-1/2 x 1-1/2 x 1/2 40 x 40 x 15	1.44 (36,6)	1.44 (36,6)	1.69 (42,9)	0.69 (17,5)	0.69 (17,5)	1.13 (28,7)	1.14 (0,52)	86261	
1-1/2 x 1-1/2 x 3/4 40 x 40 x 20	1.50 (38,1)	1.50 (38,1)	1.75 (44,4)	0.75 (19,0)	0.75 (19,0)	1.19 (30,1)	1.23 (0,56)	86262	
1-1/2 x 1-1/2 x 1 40 x 40 x 25	1.63 (41,2)	1.63 (41,2)	1.81 (46,0)	0.88 (22,4)	0.88 (22,4)	1.13 (28,7)	1.38 (0,62)	86263	
1-1/2 x 1-1/2 x 1-1/4 40 x 40 x 32	1.81 (46,0)	1.81 (46,0)	1.88 (47,6)	1.06 (27,0)	1.06 (27,0)	1.19 (30,1)	1.50 (0,68)	86264	
1-1/2 x 1-1/2 x 2 40 x 40 x 50	2.19 (55,5)	2.19 (55,5)	2.00 (50,8)	1.44 (36,6)	1.44 (36,6)	1.25 (31,7)	2.00 (0,91)	86265	
2 x 1 x 2 50 x 25 x 50	2.25 (57,2)	2.00 (50,8)	2.25 (57,2)	1.50 (38,1)	1.31 (33,3)	1.50 (38,1)	2.18 (0,99)	86266	
2 x 1-1/4 x 2 50 x 32 x 50	2.25 (57,2)	2.13 (54,1)	2.25 (57,2)	1.50 (38,1)	1.44 (36,6)	1.50 (38,1)	2.31 (1,05)	86267	
2 x 1-1/2 x 1/2 50 x 40 x 15	1.50 (38,1)	1.44 (36,6)	1.88 (47,8)	0.75 (19,0)	0.69 (17,5)	1.31 (33,3)	1.50 (0,68)	86268	
2 x 1-1/2 x 3/4 50 x 40 x 20	1.63 (41,4)	1.50 (38,1)	1.94 (49,3)	0.88 (22,4)	0.75 (19,0)	1.38 (35,0)	1.61 (0,73)	86269	
2 x 1-1/2 x 1 50 x 40 x 25	1.75 (44,5)	1.63 (41,4)	2.00 (50,8)	1.00 (25,4)	0.88 (22,4)	1.31 (33,3)	1.65 (0,75)	86270	
2 x 1-1/2 x 1-1/2 50 x 40 x 40	2.06 (52,4)	1.94 (49,2)	2.19 (55,5)	1.31 (33,3)	1.19 (30,2)	1.44 (36,6)	2.03 (0,92)	86272	
2 x 1-1/2 x 2 50 x 40 x 50	2.25 (57,1)	2.19 (55,5)	2.50 (63,5)	1.50 (38,1)	1.44 (36,6)	1.50 (38,1)	2.37 (1,07)	86273	
2 x 2 x 1/2 50 x 50 x 15	1.50 (38,1)	1.50 (38,1)	1.88 (47,8)	0.75 (19,0)	0.75 (19,0)	1.31 (33,3)	1.50 (0,68)	86222	
2 x 2 x 3/4 50 x 50 x 20	1.63 (41,4)	1.63 (41,4)	1.94 (49,3)	0.88 (22,4)	0.88 (22,4)	1.38 (35,0)	1.67 (0,76)	86223	
2 x 2 x 1 50 x 50 x 25	1.75 (44,5)	1.75 (44,5)	2.00 (50,8)	1.00 (25,4)	1.00 (25,4)	1.31 (33,3)	1.91 (0,86)	86224	
2 x 2 x 1-1/4 50 x 50 x 32	1.88 (47,8)	1.88 (47,8)	2.13 (54,1)	1.13 (28,7)	1.13 (28,7)	1.44 (36,6)	2.05 (0,93)	86225	
2 x 2 x 1-1/2 50 x 50 x 40	2.00 (50,8)	2.00 (50,8)	2.19 (55,6)	1.25 (31,8)	1.25 (31,8)	1.50 (38,1)	2.11 (0,96)	86226	
2 x 2 x 2-1/2 50 x 50 x 65	2.63 (66,8)	2.63 (66,8)	2.38 (60,5)	1.75 (44,5)	1.88 (47,8)	1.44 (36,6)	3.67 (1,66)	86227	
2-1/2 x 2 x 3/4 65 x 50 x 20	1.75 (44,5)	1.63 (41,4)	2.31 (58,7)	0.63 (15,9)	0.88 (22,4)	1.75 (44,5)	2.22 (1,01)	86274	

TABLE E (2 OF 2)
FIGURE 815
NOMINAL DIMENSIONS

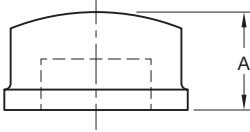


FIGURE 820
CAP

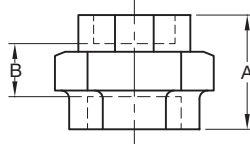


FIGURE 830
BRASS SEAT UNION

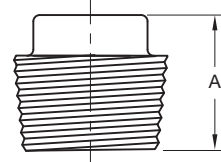


FIGURE 719
PLUG

Nominal Pipe Size	Figure 820			Figure 830				Figure 719		
	ANSI Inches DN	A Inches (mm)	Approx. Weight Lbs. (kg)	Part Number	A Inches (mm)	B Inches (mm)	Approx. Weight Lbs. (kg)	Part Number	A Inches (mm)	Approx. Weight Lbs. (kg)
1/2 15	0.88 (22,4)	0.15 (0,06)	72776	1.88 (47,8)	0.81 (20,6)	0.47 (0,21)	86207	0.94 (23,9)	0.10 (0,04)	86292
3/4 20	1.00 (25,4)	0.22 (0,10)	72777	2.00 (50,8)	0.94 (23,9)	0.66 (0,30)	86275	1.13 (28,7)	0.18 (0,08)	86293
1 25	1.18 (30,0)	0.33 (0,15)	72824	2.19 (55,6)	0.81 (20,6)	1.08 (0,49)	86276	1.25 (31,7)	0.28 (0,13)	86294
1-1/4 32	1.31 (33,3)	0.54 (0,24)	72756	2.50 (63,5)	1.06 (26,9)	1.54 (0,70)	86277	1.38 (35,1)	0.50 (0,23)	86295
1-1/2 40	1.38 (35,1)	0.68 (0,31)	72822	2.63 (66,8)	1.19 (30,2)	2.03 (0,92)	86278	1.44 (36,6)	0.70 (0,32)	86296
2 50	1.50 (38,1)	0.96 (0,43)	72823	3.13 (79,5)	1.63 (41,4)	3.15 (1,43)	86279	1.50 (38,1)	0.90 (0,41)	86297
2-1/2 65	1.75 (44,5)	1.80 (0,82)	72825	—	—	—	—	—	—	—

TABLE F
FIGURES 820, 830 & 719
NOMINAL DIMENSIONS

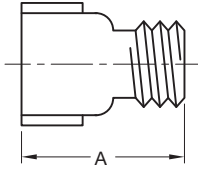


FIGURE 825
EXTENSION PIECE

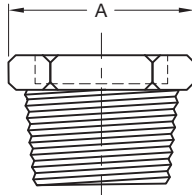


FIGURE 827
HEX BUSHING

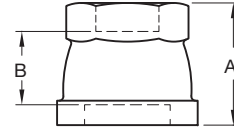


FIGURE 816
REDUCING COUPLING

Nominal Pipe Size	Figure 825 Extension Piece			Figure 827 Hex Bushing			Figure 816 Reducing Coupling				
	ANSI Inches DN	A Inches (mm)	Approx. Weight Lbs. (kg)	Part Number	A Inches (mm)	Approx. Weight Lbs. (kg)	Part Number	A Inches (mm)	B Inches (mm)	Approx. Weight Lbs. (kg)	Part Number
1/2 x 1/2 15 x 15	1.50 (38,1)	0.20 (0,09)	72751	—	—	—	—	—	—	—	—
1/2 x 1/2 15 x 15	2.00 (50,8)	0.27 (0,12)	72980	—	—	—	—	—	—	—	—
3/4 x 3/4 20 x 20	1.50 (38,1)	0.22 (0,10)	72981	—	—	—	—	—	—	—	—
3/4 x 3/4 20 x 20	2.00 (50,8)	0.31 (0,14)	73982	—	—	—	—	—	—	—	—
3/4 x 1/2 20 x 15	—	—	—	—	—	—	1.75 (43,2)	0.69 (17,5)	0.38 (0,17)	86772	
1 x 1/2 25 x 15	—	—	—	1.06 (26,9)	0.22 (0,10)	72726	1.69 (42,9)	0.50 (12,7)	0.38 (0,17)	86228	
1 x 3/4 25 x 20	—	—	—	1.06 (26,9)	0.18 (0,08)	72762	1.75 (43,2)	0.50 (12,7)	0.53 (0,24)	86229	
1-1/4 x 1 32 x 25	—	—	—	1.19 (30,2)	0.31 (0,14)	72763	—	—	—	—	
1-1/2 x 1 40 x 25	—	—	—	1.25 (31,7)	0.53 (0,24)	72757	—	—	—	—	
1-1/2 x 1-1/4 40 x 32	—	—	—	1.25 (31,7)	0.35 (0,10)	72764	—	—	—	—	
2 x 1 50 x 25	—	—	—	1.38 (35,1)	0.75 (0,34)	72759	—	—	—	—	
2 x 1-1/4 50 x 32	—	—	—	1.38 (35,1)	0.69 (0,31)	72761	—	—	—	—	
2 x 1-1/2 50 x 40	—	—	—	1.38 (35,1)	0.62 (0,28)	72775	—	—	—	—	

TABLE G
FIGURE 825, 827 & 816
NOMINAL DIMENSIONS

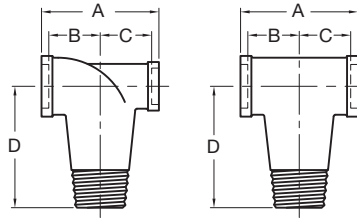


FIGURE 832
CALIFORNIA TEES

Nominal Pipe Size	Figure 832					
	ANSI Inches DN	A Inches (mm)	B Inches (mm)	C Inches (mm)	D Inches (mm)	Approx. Weight Lbs. (kg)
1 x 1/2 x 1 25 x 15 x 25	1.50 (38,1)	0.88 (22,4)	0.75 (19,1)	3.00 (76,2)	0.95 (0,43)	42000
1 x 1 x 1 25 x 25 x 25	1.50 (38,1)	0.75 (19,1)	0.75 (19,1)	3.00 (76,2)	0.95 (0,43)	42001

TABLE H
FIGURE 832
NOMINAL DIMENSIONS

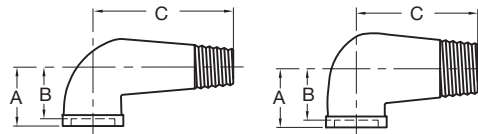


FIGURE 831
STREET ELBOWS

Nominal Pipe Size	Figure 831				
	ANSI Inches DN	A Inches (mm)	B Inches (mm)	C Inches (mm)	Approx. Weight Lbs. (kg)
1 x 1/2 25 x 15	1.50 (38,1)	0.75 (19,1)	3.00 (76,2)	0.70 (0,32)	42003
1 x 1 25 x 25	1.50 (38,1)	0.75 (19,1)	3.00 (76,2)	0.90 (0,40)	42002

TABLE J
FIGURE 831
NOMINAL DIMENSIONS