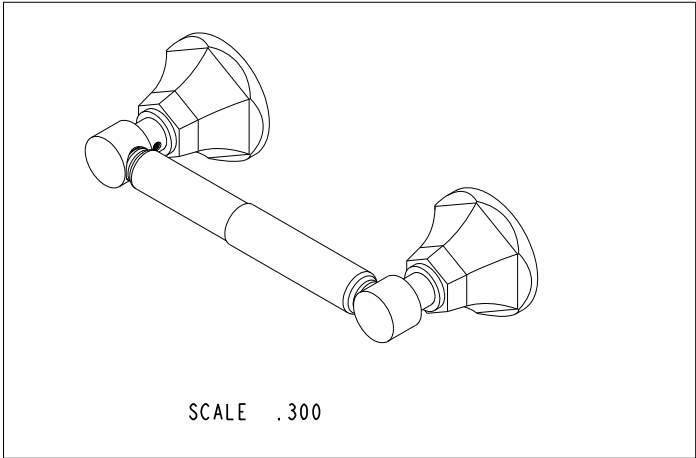


BILL OF MATERIAL (CURRENT LEVEL)				
ITEM	PT/ASSY	DESCRIPTION	TYPE	QTY.
1	2-184	TISSUE ROLLER ASSEMBLY	ASSEMBLY	1
2	10962	TOWEL POST	PART	2
3	10960	HEX ESCUTCHEON	PART	2
4	1-211	ACCESSORY MTG KIT	ASSEMBLY	2
5	92000	SCRW, 8-32 X 1/8 SKT HD CUP PT SS	PART	2
6	1-125	HARDWARE KIT	ASSEMBLY	2
7	91386	O-RING, #2-034, EPDM, 65-75 DURO	PART	2



COPYRIGHT 2005 BRASSTECH, INC. THESE DRAWINGS AND THE DESIGNS DEPICTED HEREIN ARE THE PROPRIETARY PROPERTY OF BRASSTECH. ANY USE OR REPRODUCTION IS SUBJECT TO THE EXPRESS APPROVAL OF BRASSTECH. UNAUTHORIZED USE IS STRICTLY PROHIBITED. ALL RIGHTS RESERVED.

BRASSTECH
INCORPORATED

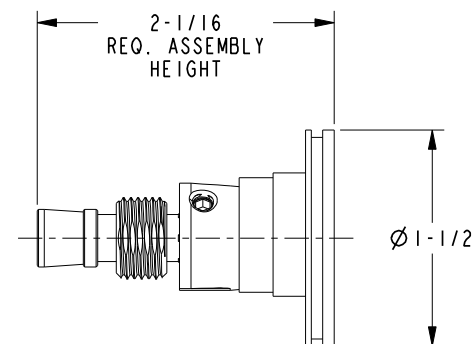
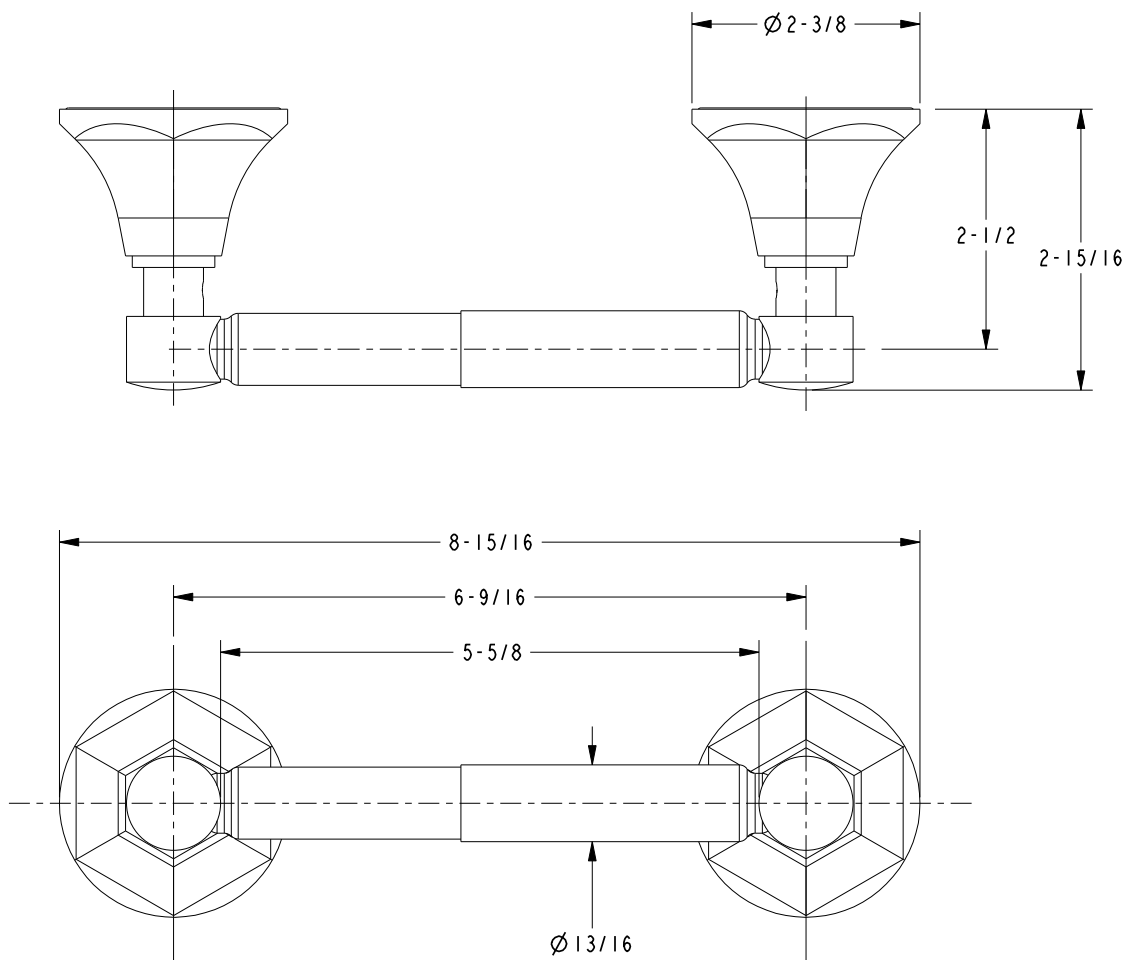
2001 E. CARNEGIE AVE.
SANTA ANA, CA 92705
(949) 417-5207

TISSUE HOLDER - DBLE POST

ASSY. NO.		24-28	
SCALE	.438	REF.	-
SHEET 1 OF 2		REV	REV DESC
		DATE	

C	EN-2266a	04/15/13
B	EN-1241	12/09/09
A	EO-0404	8/25/04
-	RELEASED	07/17/03

SPECIFICATION DWG



1-211
SCALE 0.750

DIMENSIONS ARE IN INCHES AND AN APPROXIMATION OF A TYPICAL INSTALLATION

COPYRIGHT 2005 BRASSTECH, INC. THESE DRAWINGS AND THE DESIGNS DEPICTED HEREIN ARE THE PROPRIETARY PROPERTY OF BRASSTECH. ANY USE OR REPRODUCTION IS SUBJECT TO THE EXPRESS APPROVAL OF BRASSTECH. UNAUTHORIZED USE IS STRICTLY PROHIBITED. ALL RIGHTS RESERVED.

BRASSTECH		2001 CARNEGIE AVE. SANTA ANA, CA 92705 (949) 417-5207	
DWG NO.	24-28		REV C
SCALE 1.000	REF. -	SHEET 2 OF 2	