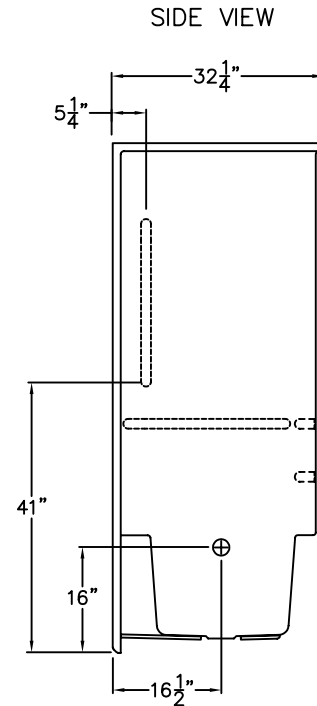
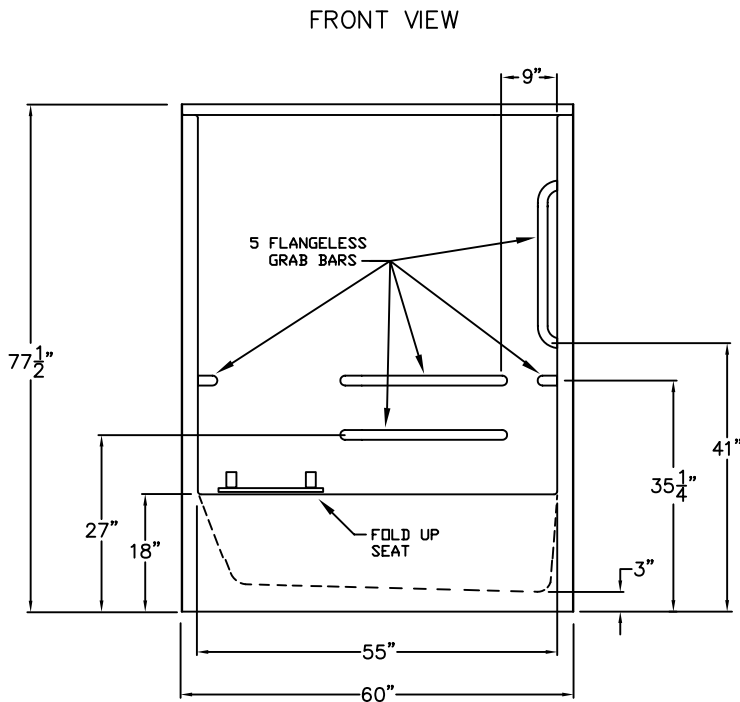


Special Needs Series

SUBMITTAL DATA



Gelcoat 60' ADA Tub/Shower

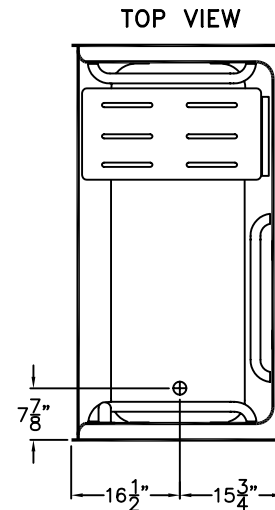
This tub/shower enclosure shall be Aquarius Model G 6092 TS BF.

It shall meet ANSI A117.1 and ANSI 124.1, shall have the backside fire rating of "A" and a flame spread of less than 25, shall be designed to meet ADA, FHA, HUD, BOCA, NAHB, UPC and shall meet the requirements of most state and national standards on design for the disabled including Southern Building Code.

The enclosure shall be equipped with the following factory installed accessories:

- 1) Five Flangeless Grab Bars
- 2) Fold up Seat

Available options: 1) hand held shower set (includes: hand set, 60' flex hose, swivel connector, vacuum breaker, brass nipple, lock nut and shower wall outlet), 2) pressure balance valve, 3) green anti-bacterial shower curtain with hooks, 4) white shower curtain and hooks, 5) CURTAIN ROD.

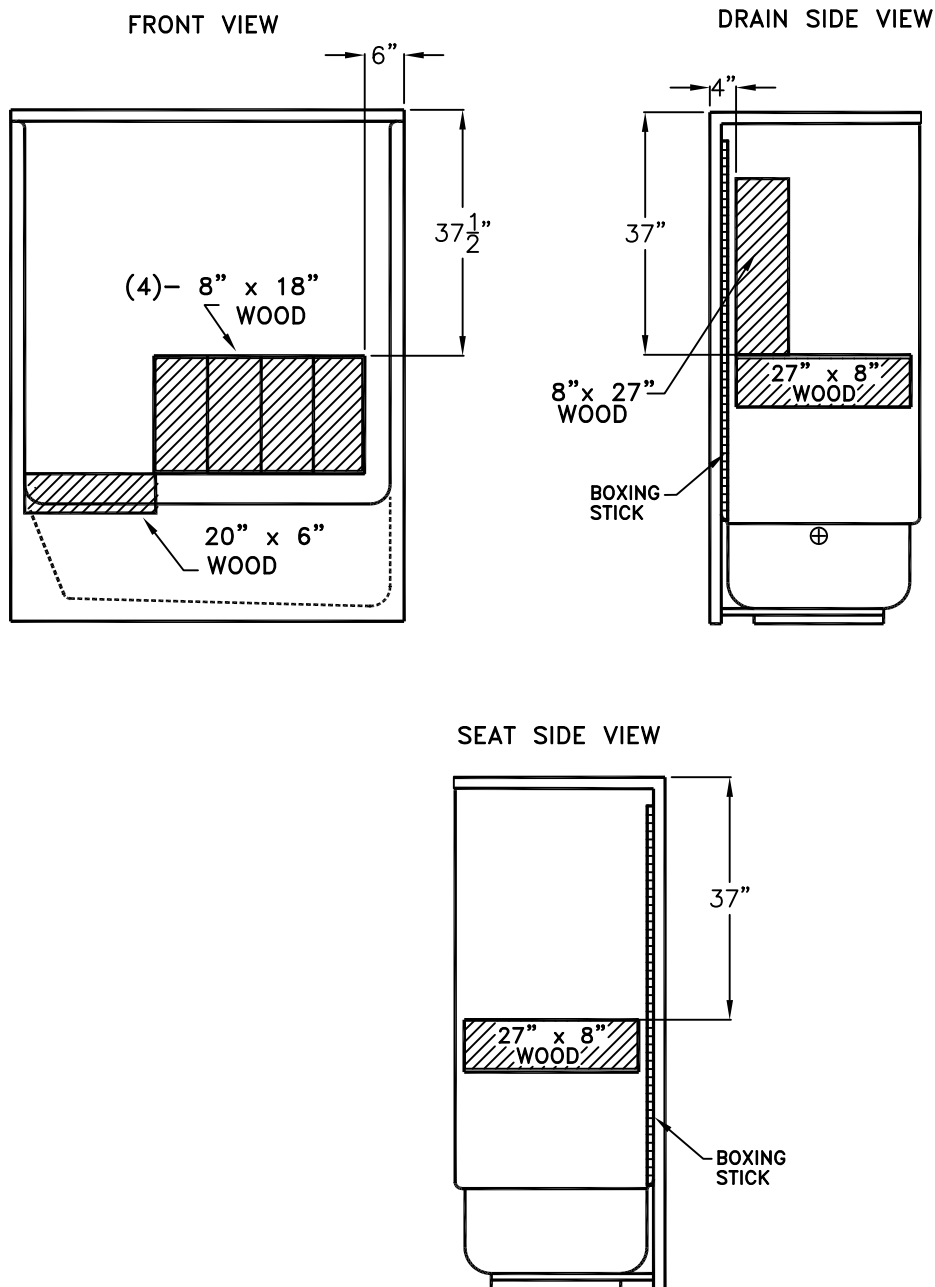


DUE TO THE NATURE OF THE MATERIALS INVOLVED, UNIT DIMENSIONS MAY VARY ± 1/2 INCH.

Job Name:	AQUARIUS	
Model No.:	Drawing#: G 6092 TS Package 1 ADA	
Approved by:	Date Approved:	Date: 7-17-96 Revised: 2-3-09
Rep.:	Wholesaler:	Quote No.:

PRAXIS INDUSTRIES, LLC.
435 INDUSTRIAL RD - SAVANNAH, TN 38372
1 (800) 443-7269 - FAX (731) 925-4290

Special Needs Series



Job Name:

AQUARIUS

Model No.:

Drawing#: G 6092 TS Package 1 BP

Approved by:

Date Approved:

Date: 7-19-96

Revised: 10-15-08

Rep.:

Wholesaler:

Quote No.:

PRAXIS INDUSTRIES, LLC.
435 INDUSTRIAL RD - SAVANNAH, TN 38372
1 (800) 443-7269 - FAX (731) 925-4290