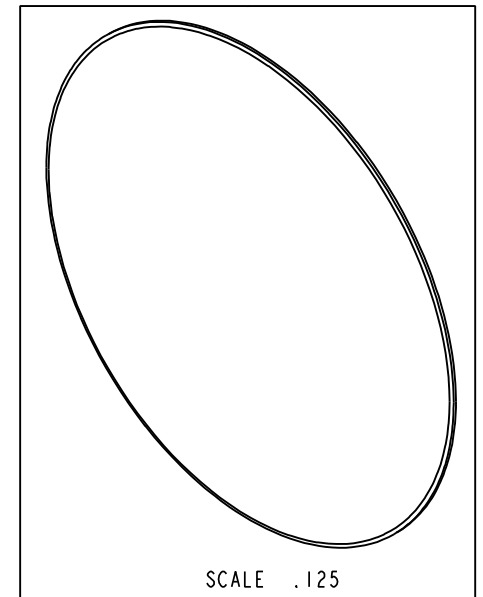


- 1 LOCATION FOR VHB TAPE
- 2 APPLY PLAMER MIRROR MASTIC

BILL OF MATERIAL (CURRENT LEVEL)

ITEM	PT/ASSY	DESCRIPTION	TYPE	QTY.
1	91477	ADHESIVE BACKED BUMPER	PART	1
2	MB41	LOW PROFILE MIRROR BRACKET	PART	1
3	C0341	MIRROR GLASS	PART	1
4	91462	VHB TAPE 1" X 1 1/2" LONG	PART	2
5	WB41	WALL BRACKET KIT	ASSEMBLY	1



COPYRIGHT 2005 GINGER. THESE DRAWINGS AND THE DESIGNS DEPICTED HEREIN ARE THE PROPRIETARY PROPERTY OF GINGER. ANY USE OR REPRODUCTION IS SUBJECT TO THE EXPRESS APPROVAL OF GINGER. UNAUTHORIZED USE IS STRICTLY PROHIBITED. ALL RIGHTS RESERVED.

GINGER

2001 E. CARNEGIE AVE.
SANTA ANNA CA 92705
(949) 417-5207

HOTELIER 24" FRAMELESS BEVELED MIRROR

ASSY. NO. 0341N

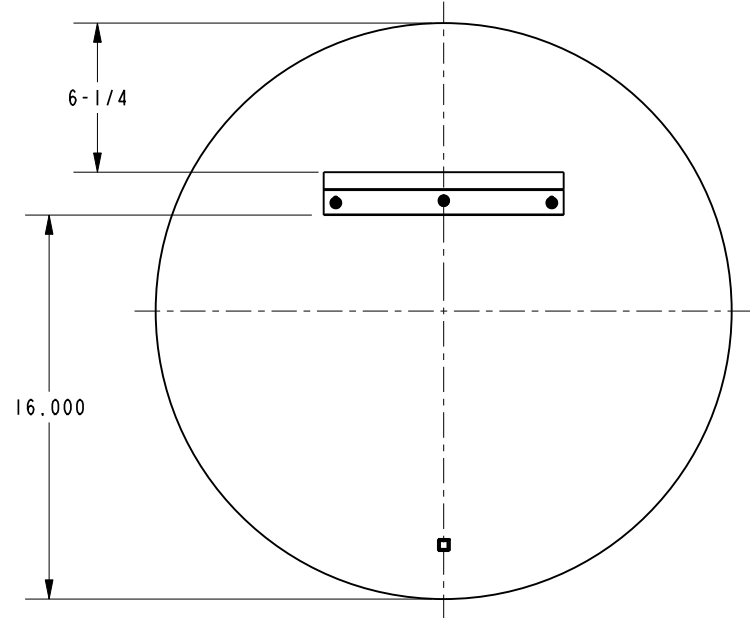
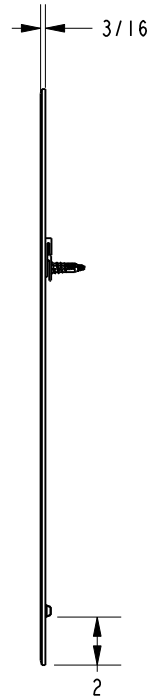
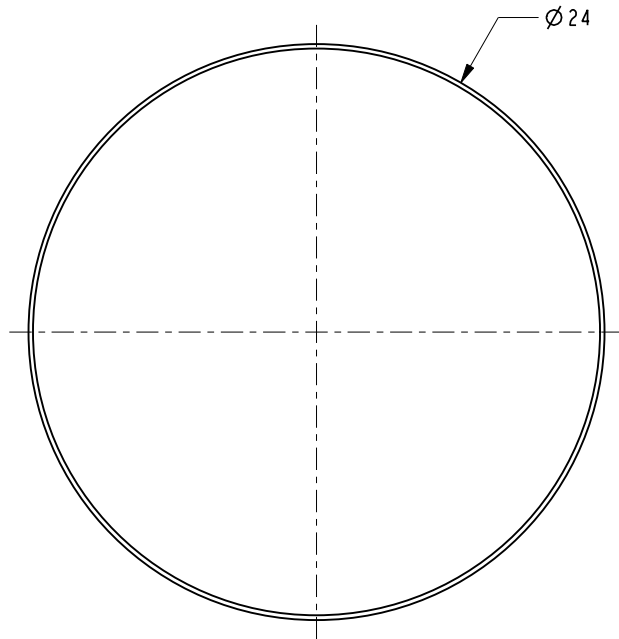
SCALE .188

REF. -

SHEET 1 OF 2

B	EN-2148	04/30/12
A	EN-1463	02/09/10
REV	REV DESC	DATE

SPECIFICATION DWG



DIMENSIONS ARE IN INCHES AND AN APPROXIMATION OF A TYPICAL INSTALLATION

COPYRIGHT 2005 GINGER. THESE DRAWINGS AND THE DESIGNS DEPICTED HEREIN ARE THE PROPRIETARY PROPERTY OF GINGER. ANY USE OR REPRODUCTION IS SUBJECT TO THE EXPRESS APPROVAL OF GINGER. UNAUTHORIZED USE IS STRICTLY PROHIBITED. ALL RIGHTS RESERVED.

GINGER

2001 CARNEGIE AVE.
SANTA ANA CA 92705
(949) 417-5207

DWG NO.	0341N	REV	B
SCALE	.125	REF.	-
SHEET	2	OF	2