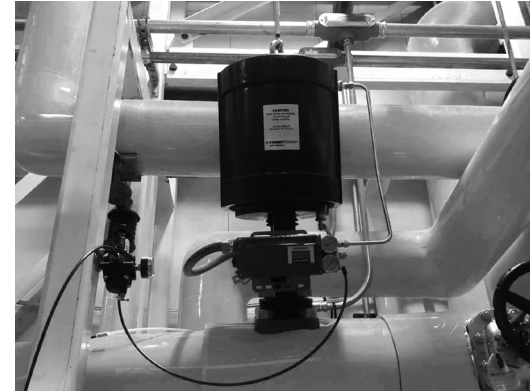
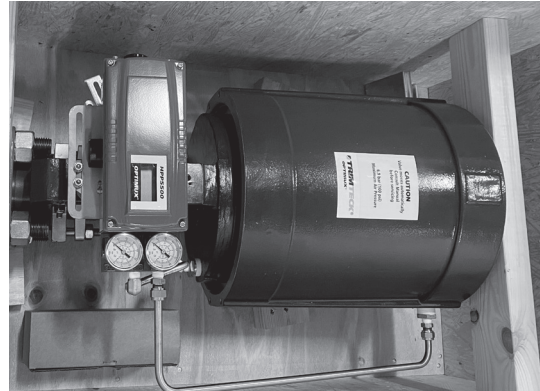


# COMPLEX PROBLEMS. COLLABORATIVE SOLUTIONS.



There's no obstacle we can't overcome **together**.



Our customers rely on our technical expertise from kickoff to completion.

For our customers, “Trust Earned Through Performance” is more than just a company tagline—it’s a realistic depiction of the relationship we share with all our valued partners. We achieve strong partnerships through a progressive scope of expectations and consistent follow-through on those expectations.

We had been collaborating with one of our partners—a biopharmaceutical company—and their engineering contractor to develop and implement a still in a water-for-injection plant. Thanks to our associates’ expertise, we were able to provide solutions that would’ve otherwise been beyond one manufacturer’s capabilities. Our team earned the respect of the client, contractor and construction manager early in the process.

As the project progressed, the customer discovered that an existing globe-style control valve was unable to isolate enough to keep the over-temperature alarm from going off—causing the system to shutdown and preventing the still from filling.

The customer turned to our team for a solution because of our thoughtful, collaborative approach to problem-solving throughout the life of the project.

We recommended a Trimteck® control valve capable of ANSI Class V shutoff. The new valve assembly was able to isolate enough to hold the “Set Point Achieved” condition and fixed the over-temperature trigger. In addition, the valve required no additional I/O or programming add an action to the control loop. The customer is now able to isolate and control with existing PID Loop and HMI buttons.

The result was a reliable valve assembly for the still, minimal downtime for the plant and the reassurance that our customer can always turn to us to provide timely solutions to complex challenges.

**Visit us online or contact us today to benefit from our full selection of services, including:**

- 24/7 availability for immediate assistance
- 1,500+ dedicated on-call associates
- Same or next-day service through our network of distribution centers and routes
- More than 150 industrial locations strategically located across the nation
- Extensive inventory available online or via local associates
- National reach and local expertise you can count on

# ABOUT FERGUSON INDUSTRIAL

---



There's no obstacle we can't overcome **together.**



We're your complete source for projects of all sizes involving manual and automated valves. Our experienced technicians, cutting-edge automation facilities, extensive inventory and quality assurance program allow us to quickly meet requirements and provide exceptional service.

Our expertly trained associates offer valuable technical consultations and troubleshooting in product specification development, design, engineering, assembly and testing of automated valve packages.

We offer an extensive product line for almost any application, including:  
Electric | Pneumatic | Hydraulic | Quarter Turn | Multi Turn | Linear | Electro-hydraulic

The applications we can engineer include:  
On / Off | Control | ESD | Block | Diverting | SIL Rated

(919) 337-9337 | [actuate@ferguson.com](mailto:actuate@ferguson.com)  
**FERGUSONINDUSTRIAL.COM**