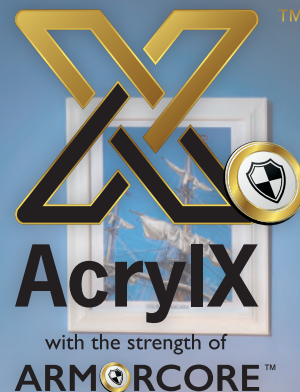
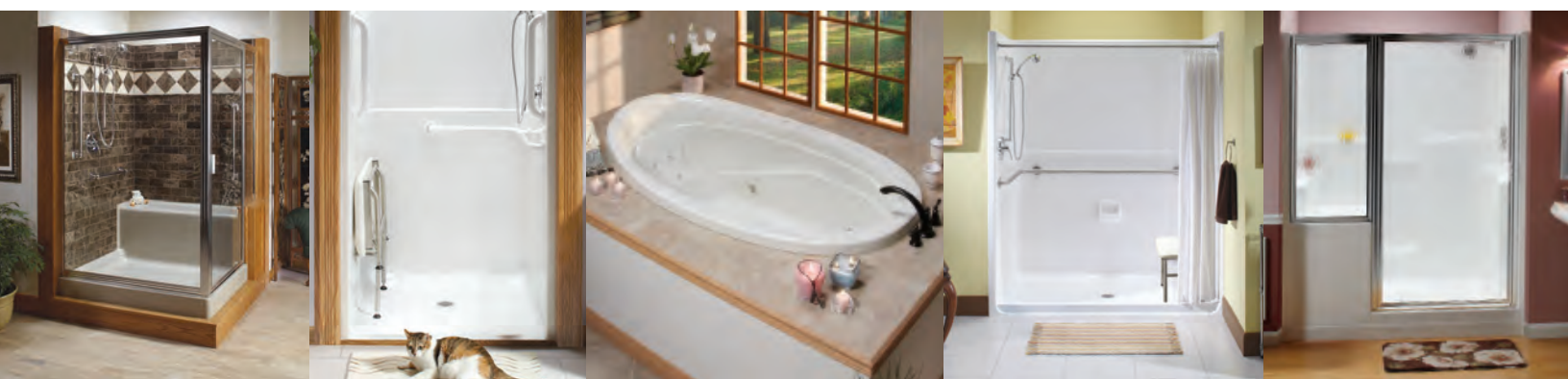


EXCEPTIONAL STRENGTH
SUPERIOR FINISH
LIFETIME WARRANTY



WHIRLPOOLS
BATHTUBS
SHOWERS
AGING IN PLACE
ASSISTED LIVING

Clarion
EVERYDAY LUXURY



Clarion

EVERYDAY LUXURY

44 Amsler Avenue
Shippensburg, PA 16254

TEL 1 800 576-9228
FAX 1 814 226-0730

www.ClarionBathware.com





■	Where to Buy.....	3
■	Chromatherapy.....	4
■	E-Z Pin.....	5
■	Freestanding Tubs.....	6
■	Tub & Soakers.....	8
	Premium Cast Acrylic Tub & Soakers.....	9
	AcrylX™ Tub & Soakers.....	12
	Advanced Options.....	16
■	Whirlpool & Bubble Jets.....	19
	Premium Cast Acrylic Whirlpools.....	21
	AcrylX™ Whirlpools.....	22
	Premium Cast Acrylic Bubble Jets.....	25
	AcrylX™ Bubble Jets.....	26
	Whirlpool & Bubble Jet Accessories.....	28
■	Showers.....	30
	Premium Cast Acrylic Showers.....	31
	AcrylX™ Showers.....	32
	Sectional AcrylX Showers.....	38
	AcrylX™ Shower Base.....	42
	AcrylX™ Master Showers.....	46
	AcrylX™ Utility/Pet Shower.....	51
■	Tub/Showers.....	52
	Premium Cast Acrylic Tub/Showers.....	53
	AcrylX™ Tub/Showers.....	54
	Sectional AcrylX™ Tub/Showers.....	59
	Shower Spa Jets.....	61
■	Accessories.....	62
■	Aging In Place.....	66
	Sectional AcrylX™.....	67
■	Clarion Innovations–New Seats and Bars.....	72
■	Clarion Innovations–E-Z Installation.....	73
■	Assisted Living.....	74
	Premium Cast Acrylic Showers.....	75
	Domeless Cast Acrylic Showers.....	78
	Premium Cast Acrylic Tub/Showers.....	79
	AcrylX™ Shower with Return Flange.....	80
	AcrylX™ Showers.....	82
	AcrylX™ Tub/Showers.....	88
	Sectional AcrylX™ Showers.....	91
	Sectional AcrylX™ Tub/Showers.....	93
	AcrylX™ Convertible Shower.....	94
	AcrylX™ Showers and Tubs.....	95
	AcrylX™ Walk-In Tub.....	96
■	Structure Reinforcement.....	97
■	Color Options.....	98
■	Care Instructions.....	99

EXCEPTIONAL STRENGTH
SUPERIOR FINISH
LIFETIME WARRANTY



AcrylX

with the strength of
ARMORCORE™

OFFERED BY CLARION BATHWARE

Real life bathrooms keep it simple.

Durable, dependable, ready to go. Everyday luxury from Clarion Bathware.

Whether it's helping families rush off for work and school or making time for a little quiet and relaxation in the evening, Clarion products are engineered for those who value our proven combination of appealing design and great value.

Since 1973, Clarion has earned the respect of architects, contractors and homeowners with custom-crafted molds for even the most challenging new construction or remodeling needs.

Our made-to-order bathware lines include showers, tubs/showers, bathtubs and whirlpools – all available in both AcrylX™ and Premium Cast Acrylic finishes.

So keep it simple, keep it real. With Clarion Bathware.

WHERE TO BUY

Clarion Bathware products are available through our vast network of wholesalers. You will find many of our products in stock and custom orders can be done directly with the wholesaler. Please contact your nearest wholesaler for price and availability.

FACTORY DIRECT SHIPPING

Clarion Bathware ships direct from our manufacturing facility in Marble, Pa., on our own fleet of air-ride trailers. Clarion's company drivers guarantee you on-time delivery and safe handling of our made-to-order bathware products.

To locate a wholesaler near you, contact us at 1 (800) 576-9228, Ext. 5212 or www.ClarionBathware.com.



OUR WARRANTIES



The bathroom has to be as tough as it is beautiful. Durable and resistant to stain or mildew. That's Clarion Bathware.

Our hard, non-porous surfaces hold up to real life. Our colorfast products wipe to a shine without scrubbing so they're easy to maintain.

6 YEAR WARRANTY

Clarion Bathware's 6 Year Warranty covers all premium cast acrylic products against defects in material and workmanship.

LIFETIME WARRANTY

Clarion Bathware's Lifetime Warranty covers all AcrylX™ products against defects in material and workmanship.

CHROMATHERAPY BENEFITS

- Stimulates and rejuvenates the body
- Balanced relief from inflammation
- Stimulates circulation
- Reduces stress

**TIME TO RELAX**

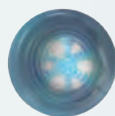
CHROMATHERAPY

Bathe yourself in soothing color. Create a relaxing and therapeutic environment with a spectrum of colors. More everyday luxury from Clarion Bathware.

Chromatherapy uses a range of light wave lengths and frequencies to soothe the mind and body. Choose from mood lights and LED surround lights.

**COLOR SPECTRUM****2" SPA MOOD LIGHTS**

Energy efficient, long life LEDs. Cycles through the following colors: Clear, Pink, Red, Light Green, Dark Green, Lavender, Light Blue, Dark Blue. (120V/1Amp/20Amp GFI).

**COLOR SPECTRUM****12 STRING LED SURROUND LIGHTS**

Small LED mood lights. Cycles through the following colors: Clear, Pink, Red, Light Green, Dark Green, Lavender, Light Blue, Dark Blue. (12V/.24Amp/20Amp GFI).



*For full instructions, please visit www.ClarionBathware.com.

E-Z INSTALLATION **EASY TO INSTALL- NO NUTS OR BOLTS**

With Clarion Bathware's patented E-Z Pin System, installing a shower or tub/shower has never been easier. No nuts or bolts are required during the installation, and all E-Z Pin units can be installed at any stage of the construction process.

The E-Z Pin System enables professionals and do-it-yourselfers to roughly fit the shower or bathtub into the framing pocket and easily remove it to make adjustments to the pocket or drain. The units can literally be installed in four E-Z steps.

*Optional on two- and three-piece sectionals. Standard on four-piece sectionals.

Clarion Bathware's Freestanding Tubs are the newest addition to our product line. These beautiful designs, take everyday luxury to a whole new level!

HEADREST

SLEEK SILHOUETTE

This modern silhouette will update the look of any bathroom.



NEW FOR 2015

FR7242C

72" L X 42" W

72" Freestanding Tub

- Freestanding modern design
- Two piece
- Center drain

ACCESSORY

HEATED BACKREST

Can be added to almost any molded seat of a Clarion shower or backrest of a Clarion tub/shower! Soothe your aches and pains with extra warmth of a heated seat or backrest.



See page 16 for more info.



To view engineering details, please visit our website at www.ClarionBathware.com.



Standard Colors: White, Biscuit and Bone. Premium colors available. See page 98.

FREESTANDING TUBS

A modern twist on an old classic. Our Freestanding Tubs offer a sleek, modern look that will become the focal point of any bathroom. Update your look with a tub that is as functional as it is beautiful.

Freestanding designs. Sleek silhouettes. Perfectly placed headrests. Everyday luxury, in all its glory. That is Clarion Bathware.

STANDARD FEATURES

- AcrylX™ • Lifetime Warranty • Slip resistant floor • Complies with NAHB, HUD UM-73A & ANSI-Z124.1.2
- Accessories are optional



HEADREST

SLEEK SILHOUETTE

This modern silhouette will update the look of any bathroom.

Air Zone Jets



UPGRADE

AIR ZONE SYSTEM

This new system allows you to upgrade your tub by adding pulsating air jets.

To view engineering details, please visit our website at www.ClarionBathware.com.

NEW FOR 2015

FR7242V

72"L X 42"W

72" Freestanding Tub

- Freestanding modern design
- AcrylX™
- Two piece
- Hydrotherapy system available
- Deep bathing well

AIR ZONE SYSTEM

EVERYDAY LUXURY

Upgrade your bathing experience by adding Clarion's Air Zone System for total relaxation. This new system allows you to enjoy 24 pulsating jets in your tub or tub/shower!

For more information see page 16.



CUSTOM COMFORT

Clarion Bathware is ideal for homes, condominiums, even multi-unit apartments. Many of our bathtubs are available as whirlpools that can be fitted with options such as heaters, mood lighting or aromatherapy.



Model No. AD7242VX



Standard Colors: White, Biscuit and Bone. Premium colors available. See page 98.

TUB & SOAKERS

The right bathtub makes it easy to relax. Care-free, soothing, designed for comfort. Everyday luxury from Clarion Bathware. Our vacuum formed, one-piece units are made-to-order for new construction or remodeling needs. Consider an inviting array of sizes, shapes, colors and options in both Premium Cast Acrylic and AcrylX™ finishes.



WHIRLPOOL OPTIONAL Many Clarion Tub/Soakers can be ordered with a whirlpool base. All units with this option will have this mark next to them.



BUBBLE JET & WHIRLPOOL OPTIONAL Many Clarion Tub/Soakers can be ordered with a whirlpool or a bubble jet base. All units available with both options will have this mark next to them.

STANDARD FEATURES

- Cast Acrylic • 6 Year Warranty • Slip resistant floor • Complies with NAHB, HUD UM-73A & ANSI-Z124.1.2
- Accessories are optional • Full accessory line, page 62 • Removable aprons available for many models



AD7248

72"W X 48"D X 21 1/2"H

72" Drop-In Tub

- Available, separate apron with removable access panel (AP72)
- End drain



AD7242VX

72"W X 42"D X 25 1/4"H

72" Oval Drop-In Tub

- Molded arm rest
- Contoured lumbar support
- Deep, comfortable bathing well
- Above the floor rough
- End drain



AD7242T

71 1/4"W X 41 3/4"D X 21 1/2"H

72" Drop-In Tub

- Acrylic towel bar
- Available, separate apron with removable access panel (AP72)
- Center drain



AD7236

72"W X 36"D X 21 1/2"H

72" Drop-In Tub

- Molded arm rests
- Available, separate apron with removable access panel (AP72)
- End drain



AD6060DS

60"W X 60"D X 21"H

60" Corner Drop-In Tub

- Molded arm rests
- Molded seat
- Front center drain



AD6070DSX

60"W X 60"D X 25"H

60" Corner Drop-In Tub

- Comfortable two person bathing well
- Above the floor rough
- Front center drain



AD6048

60"W X 48"D X 21 ½"H

60" Drop-In Tub

- Available, separate apron with removable access panel (AP60)
- End drain



AD6042T

59 ½"W X 41 ½"D X 21 ½"H

60" Drop-In Tub

- Molded arm rests
- Two acrylic towel bars
- Available, separate apron with removable access panel (AP60)
- End drain

STANDARD FEATURES

- Cast Acrylic • 6 Year Warranty • Slip resistant floor • Complies with NAHB, HUD UM-73A & ANSI-Z124.1.2
- Accessories are optional • Full accessory line, page 62 • Removable aprons available for many models



Removable Access
Panel AP60



AD6036

60"W X 36"D X 21 1/2"H

60" Drop-In Tub

- Molded arm rests
- Available, separate apron with removable access panel (AP60)
- End drain



AD6032

60"W X 32"D X 21 1/2"H

60" Drop-In Tub

- Molded arm rests
- Available, separate apron with removable access panel (AP60)
- End drain



Bath Time for Years to Come

Learn how to choose AcrylX™ or Cast Acrylic.

ACRYLX™ APPLIED ACRYLIC

The material of choice for style, strength and affordability. AcrylX™ has a visibly true white, deep lustrous finish that can only be achieved with a true acrylic surface. We've upgraded the value of the everyday bath products.

PREMIUM CAST ACRYLIC

A step up in luxury for your bathroom and your lifestyle. The benefits of Cast Acrylic are a higher gloss finish that is more luxurious, more durable and more stain resistant for years of beauty. We start with a cast acrylic sheet that is vacu-formed to your desired mold resulting in a sensuous bathtub or shower enclosure that you will truly enjoy for years and years to come.



Standard Colors: White, Biscuit and Bone. Premium colors available. See page 98.



RE4272LX or RE4272RX
72"W X 42"D X 26"H

72" Bathtub with 21" Apron

- Molded arm rests
- Available with removable access panel (RE4272LAX or RE4272RAX)
- Left or right hand drain
- 8 or 12 Whirlpool jet systems available
- Bubble jet system available



RE4272
72"W X 42"D X 26"H

72" Garden Tub with 21" Apron

- Molded arm rests
- Available with removable access panel (RE4272A)
- Rear center drain



RE4272DS
72"W x 42"D x 24"H

72" Drop-In Tub

- Molded arm rests
- Contoured lumbar support
- End drain



RE4272D
72"W x 39"D x 19"H

72" Hourglass Shaped Drop-In Tub

- Molded arm rests
- Center drain



RE3672D
72"W X 36"D X 22"H

72" Drop-In Tub

- Molded arm rests
- Contoured lumbar support
- End drain

STANDARD FEATURES

- AcrylX™ • Lifetime Warranty • Slip resistant floor • Complies with NAHB, HUD UM-73A & ANSI-Z124.1.2
- Accessories are optional • Full accessory line, page 62 • Removable aprons available for many models



RE6000L or RE6000R
65 ¾"W X 36"D X 23 ¾"H

66" Tub with 17 ½" Apron

- Molded soap holders
- Available with removable access panel (RE6000LA or RE6000RA)
- Left or right hand drain



RE8864LAX (Front and left side aprons) or RE8864RAX (Front and right side aprons)
64"W X 44"D X 30"H

64" Rectangular Corner Tub with 22" Aprons

- Simulated tile design
- Available without removable access panel (RE8864LX or RE8864RX)
- Above the floor rough
- Left or right hand drain



RE4160X
61"D x 24"H

61" Round Drop-In Tub

- Molded back rest
- Two person bathing well
- Above the floor rough
- End drain



RE4330AX
60"W X 60"D X 27"H

60" Corner Tub with 22" Apron

- Molded seat
- Two removable access panels
- Above the floor rough
- Front center drain



RE4060A

60"W X 60"D X 27"H

60" Corner Tub with 22" Apron

- Molded seat and arm rests
- Removable access panel
- Front center drain



RE4060F

60"W X 60"D X 22 ½"H

60" Corner Drop-In Tub with Tiling Flange

- Molded seat and arm rests
- Comfortable bathing well
- Front center drain



RE3000

60"W x 48 ½"D x 23 ½"H

60" Garden Tub with 17" Apron

- Molded step
- Rear center drain



RE4260L or RE4260R

60"W X 43"D X 23 ¼"H

60" Deluxe Garden Tub with 19 ½ " Apron

- Molded arm rests
- Left or right hand drain



RE4240

60"W X 42 ½"D X 24"H

60" Oval Drop-In Tub

- Molded arm rests
- Comfortable bathing well
- End drain



RE4250T

60"W X 42"D X 15 ¾"H

60" Drop-In Tub

- Two acrylic towel bars
- End drain

STANDARD FEATURES

- AcrylX™ • Lifetime Warranty • Slip resistant floor • Complies with NAHB, HUD UM-73A & ANSI-Z124.1.2
- Accessories are optional • Full accessory line, page 62 • Removable aprons available for many models



RE3100X

60"W X 42"D X 28 1/4"H

60" Garden Tub with 22" Apron

- Molded soap holders and arm rests
- Available with removable access panel (RE3100AX)
- Above the floor rough
- Rear center drain



RE3100MDX

60"W X 42"D X 28 1/4"H

60" Garden Tub with 22" Apron

- Molded arm rests
- Available with removable access panel (RE3100MDAX)
- Front center drain



RE4641X

60"W X 41"D X 25"H

60" Tub with 19" Apron and Bowed Front

- Molded arm rests
- Spacious bathing well
- Above the floor rough
- Rear center drain



RE3660LA or RE3660RA

60"W X 37"D X 21 1/2"H

60" Soaker Tub with 18" Apron

- Molded arm rests
- Removable access panel
- Available without removable access panel (RE3660L or RE3660R)
- Left or right hand drain



RE3637

60"W X 37"D X 24"H

60" Garden Tub with 19" Apron

- Molded soap holder
- Available in above the floor rough (RE3637X)
- Available with removable access panel (RE3637A)
- Rear center drain



RE3660D

60"W X 36"D X 22"H

60" Drop-In Tub

- Molded arm rests
- Contoured lumbar support
- End drain



AIR ZONE SYSTEM UPGRADE

Upgrade your standard bubble jet system with Clarion's new luxurious Air Zone System. This new system allows you to enjoy 24 pulsating jets in your tub or tub/shower!

FEATURES:

- 100% customizable jet placement
- Personalized control panel with up to four preprogrammed modes
- Self cleaning air system
- A seamless addition that takes "everyday luxury" to a new level
- Works great with our bubble jet, chromatherapy and aromatherapy systems



NECK JET PILLOW

Add an ergonomic neck jet pillow to most Clarion tubs or tub/showers, for additional relief, comfort and support.

FEATURES:

- Ergonomic design for maximum comfort and support
- Standard white and black colors available
- Other colors require extended lead time

COLORS:

- White
- Black
- Royal Blue
- Ocean Blue
- Dark Blue
- Gray
- Raspberry
- Red
- Teal



HEATING PAD

Can be added to almost any molded seat of a Clarion shower or backrest of a Clarion tub/shower! Soothe your aches and pains with extra warmth of a heated seat or backrest.

FEATURES:

- Can be added to the molded shower seat or backrest of your tub or tub/shower
- Factory installed
- 24 volt transformer included
- Electronic keypad included
- Maintenance free



STANDARD FEATURES

- AcrylX™ • Lifetime Warranty • Slip resistant floor • Complies with NAHB, HUD UM-73A & ANSI-Z124.1.2
- Accessories are optional • Full accessory line, page 62 • Removable aprons available for many models



RE4601L or RE4601R

59 3/4"W X 32 3/4"D X 18 1/2"H

60" Tub with 15" Apron

- Available in above the floor rough (RE4601LX or RE4601RX)
- Left or right hand drain



RE4630L or RE4630R

60"W X 30"D X 19"H

60" Tub with 18" Apron

- Available above the floor rough (RE4630LX or RE4630RX)
- Left or right hand drain



RE6032LB or RE6032RB

59 3/4"W X 33"D X 25 1/2"H

60" Tub with 18" Apron

- Available with removable access panel (RE6032LBA or RE6032RBA)
- Left or right hand drain



RE4060D

59"W X 59"D X 21 1/2"H

59" Corner Drop-In Tub

- Molded seat and arm rests
- Comfortable bathing well
- Front center drain



RE4500AX

55 1/4"W X 55 1/4"D X 27"H

56" Corner Tub with 22" Apron

- Molded seat and step
- Two removable access panels
- Above the floor rough
- Rear center drain



RE4000

54"W X 54"D X 18"H

54" Corner Drop-In Tub with Tiling Flange

- Molded seat
- Front center drain

STANDARD FEATURES

- AcrylX™ • Lifetime Warranty • Slip resistant floor • Complies with NAHB, HUD UM-73A & ANSI-Z124.1.2
- Accessories are optional • Full accessory line, page 62 • Removable aprons available for many models



Access
to
Pump

Access
to
Pump

RE4554AX

54"W X 54"D X 26 3/4"H

54" Corner Tub with 19 1/4" Apron

- Molded head and back rest
- Two removable access panels
- Above the floor rough
- Front center drain



RE2000X

54"W X 42"D X 24 3/4"H

54" Garden Tub with 19 1/2" Apron

- Molded step
- Above the floor rough
- Rear center drain



RE4401LX or RE4401RX

54"W X 28"D X 17 1/2"H

54" Tub with 16 1/2" Apron

- Above the floor rough
- Left or right hand drain



RE4554DX

52"W X 52"D X 24"H

52" Drop-In Corner Bathtub

- Molded head rest
- Molded back rest
- Above the floor rough
- Front center drain



Standard Colors: White, Biscuit and Bone.
Premium colors available. See page 98.

WHIRLPOOL & BUBBLE JET ULTIMATE COMBINATION

Who said you had to make a choice? Match your “ooh” with the perfect “aah” and enjoy the ultimate source of true relaxation with Clarion Bathware.

Crafted by our water massage experts, this combination tub provides a truly effervescent experience with separate water jets and air jets. Of course, you can customize with numerous options and accessories.



To view engineering details, please visit our website at www.ClarionBathware.com.



NECK JETS

Two neck jets and soft molded head rest for maximum comfort. Molded head rest is available in White or Black. Controller included.

THE ULTIMATE MASSAGE

LOWER BODY MASSAGE

Adjustable jets for hips, knees, calves and feet offer maximum relief.

BACK MASSAGE JETS

Relief for upper and lower back. Available in White, Bone, Biscuit, Sterling Silver, Chrome, Brass, Brushed Nickel and Black.

AVAILABLE ACCESSORIES

See more optional accessories on page 28.



2" SPA MOOD LIGHTS

Energy efficient, long life LEDs. Cycles through the following colors: Clear, Pink, Red, Light Green, Dark Green, Lavender, Light Blue, Dark Blue. (120V/1Amp/20Amp GFI).



REMOVABLE MAGNETIC HEAD PILLOWS

Our removable magnetic head pillows are molded for maximum comfort. Easily removed for cleaning. Available in White or Black.



Standard Colors: White, Biscuit and Bone. Premium colors available. See page 98.

WHIRLPOOLS

We put the “mmmm” in massage. With just the right number of water jets in all the right places. That’s soothing relief from Clarion Bathware.

Our Premium Cast Acrylic and AcrylX models are built for years of enjoyment with 3/4 HP rated motors and factory installed air control, suction outlet and on/off switch. Enhance your experience even more with mood lights, aromatherapy, heater or other options.

STANDARD FEATURES

- Cast Acrylic • 6 Year Warranty • Slip resistant floor • Complies with NAHB, HUD UM-73A & ANSI-Z124.1.2
- Accessories are optional • Full accessory line, page 28



AD7248

72"W X 48"D X 21 1/2"H

72" Drop-In Tub

- Available, separate apron with removable access panel (AP72)
- Available with 8 jet whirlpool system
- End drain



AD7242VX

72"W X 42"D X 25 1/4"H

72" Oval Drop-In Tub

- Molded arm rest
- Contoured lumbar support
- Deep, comfortable bathing well
- Above the floor rough
- Available with 8 & 10 jet whirlpool systems
- End drain

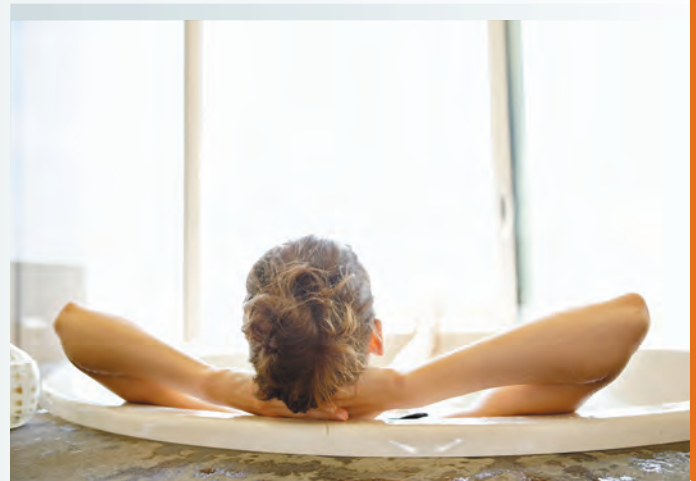


AD6070DSX

60"W X 60"D X 25"H

60" Corner Drop-In Tub

- Comfortable two person bathing well
- Above the floor rough
- Available with 8 & 12 jet whirlpool systems
- Front center drain



Customize Your Experience

Accessorize your bath with custom whirlpool or bubble jets, mood lights, aromatherapy, pillow and even ozone for a natural clean.

See page 28–29 for our full line of whirlpool and bubble jet accessories.



RE4272
72"W X 42"D X 26"H

72" Garden Tub with Integral Apron

- Molded arm rests
- Available with removable access panel (RE4272A)
- Available with 8 & 12 jet whirlpool systems
- Rear center drain



RE4272DS
72"W X 42"D X 24"H

72" Drop-In Tub

- Molded arm rests
- Contoured lumbar support
- Available with 8 & 10 jet whirlpool systems
- End drain



RE3672D
72"W X 36"D X 22"H

72" Drop-In Tub

- Molded arm rests
- Contoured lumbar support
- Available with 8, 10 & 12 jet whirlpool systems
- End drain



RE4060F
60"W X 60"D X 22 ½"H

60" Corner Drop-In Tub with Tiling Flange

- Molded arm rests
- Molded seat
- Comfortable bathing well
- Available with 8 & 12 jet whirlpool system
- Front center drain

STANDARD FEATURES

- AcrylX™ • Lifetime Warranty • Slip resistant floor • Complies with NAHB, HUD UM-73A & ANSI-Z124.1.2
- Accessories are optional • Full accessory line, page 28



RE6032LA or RE6032RA

59 3/4"W X 33"D X 78 1/4"H

60" 3-Piece Tub/Shower with 18" Apron

- Molded soap ledges
- Removable access panel
- Available above the floor rough (RE6032LAX or RE6032RAX)
- Available with E-Z Pin System (REZ6032LA or REZ6032RA)
- Available with 4 & 6 jet whirlpool systems
- Left or right hand drain



RE7900LAT or RE7900RAT

60"W X 33"D X 73 3/4"H

60" 1-Piece Tub/Shower with 15" Apron

- Molded soap ledges
- Acrylic towel bar
- Removable access panel
- Available with 4 & 6 jet whirlpool systems
- Left or right hand drain



RE4554AX

54"W X 54"D X 26 3/4"H

54" Corner Tub with Integral Apron

- Molded head rest and back rest
- Two removable access panels
- Above the floor rough
- Available with 8 & 12 jet whirlpool systems
- Front center drain



Clarion's 6 Year Warranty

The bathroom has to be as tough as it is beautiful. Durable and resistant to stain or mildew. That's Clarion Bathware.

Our industry leading 6 Year Warranty covers every Clarion Bathware unit, against defects in material and workmanship.



BUBBLE JET MASSAGE SYSTEM
16 multi hole bubble jets around the perimeter of the tub. Thousands of tiny air bubbles surround and stimulate the body.

MANIFOLD

ENGINEERING

BLOWER

120v-15amp blower with auto dry that automatically starts 20 minutes after system shuts off.

FLEXIBLE TUBING

Tubing directs air equally to all bubble jets placed around the tub.

To view engineering details, please visit our website at www.ClarionBathware.com.

CONTROLS

DIGITAL KEYPAD

Exclusive Slimfit LCD display with a watertight plastic membrane.

AVAILABLE ACCESSORIES See more optional accessories on page 28.



REMOVABLE MAGNETIC HEAD PILLOWS

Our removable magnetic head pillows are molded for maximum comfort. Easily removed for cleaning. Available in White or Black.



2" SPA MOOD LIGHTS

Energy efficient, long life LEDs. Cycles through the following colors: Clear, Pink, Red, Light Green, Dark Green, Lavender, Light Blue, Dark Blue. (120V/1Amp/20Amp GFI).



ERGO BARS

High quality grab bars. Sizes available 6" or 11". Compliant to the 250 lbs shear test in accordance with ASTM:F446-85 and CSA B45 0-02.



Standard Colors: White, Biscuit and Bone. Premium colors available. See page 98.

BUBBLE JETS

You've never experienced a rush like this. Enjoy a fingertip massage from thousands of bubbles flowing to the surface of your tub. A new level of everyday luxury from Clarion Bathware.

Our tubs feature 16 air jets that surround you with relaxing bubbles. To ensure long-lasting performance, each air jet has an individual check valve to ensure that water never gets into the airline.

STANDARD FEATURES

- Cast Acrylic • 6 Year Warranty • Slip resistant floor • Complies with NAHB, HUD UM-73A & ANSI-Z124.1.2
- Accessories are optional • Full accessory line, page 28



AD7242VX

72"W X 42"D X 25 1/4"H

72" Oval Drop-In Tub

- Molded arm rest
- Contoured lumbar support
- Deep, comfortable bathing well
- Above the floor rough
- 16 bubble jet system
- End drain



AD6070DSX

60"W X 60"D X 25"H

60" Corner Drop-In Tub

- Comfortable two person bathing well
- Above the floor rough
- 16 bubble jet system
- Front center drain



AD6060DS

60"W X 60"D X 21"H

60" Corner Drop-In Tub

- Molded arm rests
- Molded seat
- 16 bubble jet system
- Front center drain

Note: Bubble jet systems can be added to almost every tub/shower or tub soaker.



RE4272

72"W X 42"D X 26"H

72" Garden Tub with Integral Apron

- Molded arm rests
- Available with removable access panel (RE4272A)
- 16 bubble jet system
- Rear center drain



RE4272D

72"W X 39"D X 19"H

72" Hourglass Shaped Drop-In Tub

- Molded arm rests
- 16 bubble jet system
- Center drain



RE6000L or RE6000R

65 ¾"W X 36"D X 23 ¼"H

66" Tub with Integral Apron

- Molded soap holders
- Available with removable access panel (RE6000LA or RE6000RA)
- 16 bubble jet system
- Left or right hand drain



**RE8864LAX (Front and left side aprons) or
RE8864RAX (Front and right side aprons)**

64"W X 44"D X 30"H

64" Rectangular Corner Tub with Dual Aprons

- Simulated tile design
- Available without removable access panel (RE8864LX or RE8864RX)
- Above the floor rough
- 16 bubble jet system
- Left or right hand drain

STANDARD FEATURES

- AcrylX™ • Lifetime Warranty • Slip resistant floor • Complies with NAHB, HUD UM-73A & ANSI-Z124.1.2
- Accessories are optional • Full accessory line, page 28



RE4160X
61" D X 24"H

61" Round Drop-In Tub

- Molded back rest
- Two person bathing well
- Above the floor rough
- 16 bubble jet system
- End drain



RE4060A
60"W X 60"D X 27"H

60" Corner Tub with Integral Apron

- Molded seat
- Molded arm rests
- Removable access panel
- 16 bubble jet system
- Front center drain



RE4060F
60"W X 60"D X 22 ½"H

60" Corner Drop-In Tub with Tiling Flange

- Molded seat
- Comfortable bathing well
- 16 bubble jet system
- Front center drain



RE3660L or RE3660R
60"W X 37"D X 21 ½"H

60" Soaker Tub with Integral Apron

- Molded arm rests
- Available with removable access panel (RE3660LA or RE3660RA)
- 16 bubble jet system
- Left or right hand drain



RE4554AX
54"W X 54"D X 26 ¾"H

54" Corner Tub with Integral Apron

- Molded head rest
- Molded back rest
- Two removable access panels
- Above the floor rough
- 16 bubble jet system
- Front center drain

Access
to
Pump

Access
to
Pump

WHIRLPOOL OPTIONS

BIG JET COLORS



White



Bone



Biscuit



Sterling Silver



Chrome



Brass



Brushed Nickel



Black

MICRO JET COLORS



White



Bone



Biscuit



Sterling Silver



Chrome



Brass



Brushed Nickel



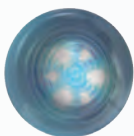
Black

LIGHTING



2" SPA MOOD LIGHTS

Energy efficient, long life LEDs. Cycles through the following colors: Clear, Pink, Red, Light Green, Dark Green, Lavender, Light Blue, Dark Blue. (120V/1Amp/20Amp GFI).



12 STRING LED SURROUND LIGHTS

Small LED mood lights. Cycles through the following colors: Clear, Pink, Red, Light Green, Dark Green, Lavender, Light Blue, Dark Blue. (12V/.24Amp/20Amp GFI).

ERGO BARS



ERGO BARS

High quality grab bars. Sizes available 6" or 11". Compliant to the 250 lbs shear test in accordance with ASTM:F446-85 and CSA B45 0-02.

WHIRLPOOL OPTIONS



NECK JETS

Two neck jets and soft molded head rest for maximum comfort. Molded head rest is available in White or Black. Controller included.



REMOVABLE MAGNETIC HEAD PILLOWS

Our removable magnetic head pillows are molded for maximum comfort. Easily removed for cleaning. Available in White or Black.



PUMPS

3/4 Hp or 1 Hp with thermal protected motor.
3/4 Hp Pump (120V/.7Amp/20Amp GFI) 1Hp Pump (120V/12Amp/20Amp GFI).



OZONE

Naturally formed from oxygen, leaves no products in water, no need for additional sanitary solutions to clean your bath. (120V/.09Amp/20Amp GFI).



HEATERS

Heater with stainless steel flow tube and element offers superior corrosion resistance. (120V/12.5Amp/20Amp GFI).



AROMATHERAPY STRIP DISPENSER

Strip dispenser assembly available in White, Bone, Biscuit.

TRIM OPTIONS



TILING FLANGE

Tiling flange available for drop in unit installed into alcove.

BUBBLE JET OPTIONS



MULTI HOLE AIR JET

16 bubble jet system available in White, Bone, Brass, Chrome, Brushed Nickel.

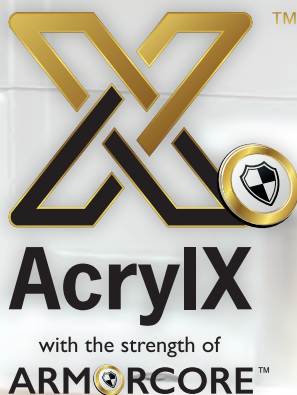


BUBBLE JET KEYPAD

Electric components integrated in a watertight plastic membrane to ensure a long life for your unit.

AMERICAN MADE PERFORMANCE

Clarion Bathware is designed to last. Our showers are made with two layers of fiberglass laminate and extra reinforcement in stress areas.



**EXCEPTIONAL STRENGTH
SUPERIOR FINISH
LIFETIME WARRANTY**

Model No. 4S30L/S



Standard Colors: White, Biscuit and Bone.
Premium colors available. See page 98.

SHOWERS

Every shower should be this inviting. Smooth, seamless, built to last. Everyday luxury from Clarion Bathware.

Our Premium Cast Acrylic and AcrylX™ models are made to the same exacting standards – strong, resilient and color-fast. Choose from our one-piece Premium Cast Acrylic models or our one-, two-, three-, or four-piece AcrylX™ models. For a list of color options, see page 98.

STANDARD FEATURES

• Cast Acrylic • 6 Year Warranty • Slip resistant floor • Integral Dome • Complies with NAHB, HUD UM-73A & ANSI-Z124.1.2 • Accessories are optional • Full accessory line, page 62



ARB6036

62"W X 36"D X 84 ½"H

60" Cast Acrylic Shower with 6" Threshold

- Diamond pattern back wall
- Available with smooth back wall (AFB6036)
- Molded soap ledges
- Center drain



AFL6036/S or AFR6036/S

62"W X 36"D X 84 ½"H

60" Cast Acrylic Shower with 6" Threshold

- Available with diamond pattern on back wall (ARL6036/S or ARF6036/S)
- Molded soap ledge
- Molded seat (opposite of valve wall)
- Center drain



AFB5336

53 ¾"W X 36"D X 85 ½"H

48" Cast Acrylic Shower with 6" Threshold

- Flat back wall
- Available with diamond pattern on back wall (ARB5336)
- Molded soap ledges
- Center drain



ARL5336/S or ARR5336/S

53 ¾"W X 36"D X 85 ½"H

48" Cast Acrylic Shower with 6" Threshold

- Diamond pattern on back wall
- Available with smooth back wall (AFL5336/S or AFR5336/S)
- Molded soap ledge
- Seat (opposite of valve wall)
- Center drain



AFB4136T

42"W X 37"D X 84"H

36" Cast Acrylic Shower with 6" Threshold

- Molded soap ledges
- Molded foot rest
- Acrylic towel bar
- Center drain



RE5836LT/S or RE5836RT/S
60"W X 36"D X 78"H

60" Shower with 7" Threshold

- Molded soap ledges
- Molded seat (opposite of valve wall)
- Dome available model #IN60C
- Available above the floor rough (RE5836LXT/S or RE5836RXT/S)
- Center drain



RE8060LX/S or RE8060RX/S
60"W X 36"D X 78 ½"H

60" Shower with 7" Threshold

- Simulated tile walls
- Molded soap ledges
- Molded seat (opposite of valve wall)
- Available with two molded seats (RE8060X)
- Above the floor rough
- Center drain



RE6036NS
60"W X 36"D X 78"H

60" Shower with 7" Threshold

- Molded seat available (opposite of valve wall) (RE6036L/S or RE6036R/S)
- Dome available model #IN60C
- Center drain



RE5860
60"W X 35 ¾"D X 74 ¾"H

60" Shower with 6" Threshold

- Molded soap ledges
- Two molded seats
- Available above the floor rough (RE5860X)
- Center drain



RE6035SD
60"W X 35"D X 78"H

60" Convertible Shower with 4" Threshold

- Molded soap ledges
- Tub insert RE6035T available
- Center drain

STANDARD FEATURES

- AcrylX™ • Lifetime Warranty • Slip resistant floor • Complies with NAHB, HUD UM-73A & ANSI-Z124.1.2
- Accessories are optional • Full accessory line, page 62



RE5854X

54"W X 35 3/4"D X 77 1/4"H

54" Shower with 8 1/2" Threshold

- Molded soap ledges
- Two molded seats
- Above the floor rough
- Center drain
- Available with molded foot rest (RE5854X/F)
- Available with acrylic towel bar (RE5854XT/F)



RE5854X/F

54"W X 35 3/4"D X 77 1/4"H

54" Shower with 8 1/2" Threshold

- Molded soap ledges
- Two molded foot rests
- Above the floor rough
- Available with molded seats (RE5854X)
- Available with acrylic towel bar (RE5854XT/F)
- Center drain



RE5830

54"W X 31"D X 73 1/2"H

54" Shower with 7" Threshold

- Molded soap ledges
- Two molded seats
- Center drain



RE4835L/S or RE4835R/S

48"W X 36"D X 78 1/4"H

48" Shower with 4" Threshold

- Molded soap ledges
- Molded seat (opposite of valve wall)
- Center drain



RE5843XT

48"W X 36"D X 78"H

48" Shower with 8 1/2" Threshold

- Molded soap ledges
- Acrylic towel bar
- Dome available model #RE948B
- Above the floor rough
- Available with 6" threshold (RE5843T)
- Center drain



RE5843LT/S or RE5843RT/S
48"W X 36"D X 75 ½"H

48" Shower with 6" Threshold

- Molded soap ledges
- Molded seat (opposite of valve wall)
- Acrylic towel bar
- Dome available model #RE948
- Available with above the floor rough (RE5843LXT/S or RE5843RXT/S)
- Center drain



RE5848T
48"W X 36"D X 75 ½"H

48" Shower with 6" Threshold

- Molded soap ledges
- Two molded seats
- Acrylic towel bar
- Dome available model #RE948B
- Available with above the floor rough (RE5848XT)
- Center drain



RE8043LXT/S or RE8043RXT/S
48"W X 36"D X 78"H

48" Tiled Shower with 8 ½" Threshold

- Simulated tile walls
- Molded soap ledges
- Molded seat (opposite of valve wall)
- Acrylic towel bar
- Above the floor rough
- Center drain



RE4835SD
48"W X 35"D X 78"H

48" Shower with 4" Threshold

- Molded soap ledges
- Rear center drain

STANDARD FEATURES

- AcrylX™ • Lifetime Warranty • Slip resistant floor • Complies with NAHB, HUD UM-73A & ANSI-Z124.1.2
- Accessories are optional • Full accessory line, page 62



RE4832SD

48"W X 33"D X 78"H

48" Shower with 7" Threshold

- Molded soap ledges
- Molded foot rest
- Center drain



RE8843X

43"W X 43"D X 78"H

43" Tiled Corner Shower with 8 ½" Threshold

- Simulated tile walls
- Molded soap ledges
- Molded corner seat
- Above the floor rough
- Center drain



RE4242SDX

42"W X 43"D X 77 ½"H

42" Shower with 8" Threshold

- Molded soap ledges
- Above the floor rough
- Center drain



RE4236SD

42"W X 37"D X 78"H

42" Shower with 6" Threshold

- Molded soap ledges
- Molded foot rest
- Center drain



RE4236L/S or RE4236R/S

42"W X 36 ¾"D X 78"H

42" Shower with 6" Threshold and Molded Seat

- Molded soap ledges
- Molded seat (opposite of valve wall)
- Center drain



RE4232SD

42"W X 33"D X 78"H

42" Shower with 6" Threshold

- Molded soap ledges
- Molded foot rest
- Dome available IN42A
- Center drain



RE3838

38 ¾"W X 38 ¾"D X 80 ¾"H

38" Neo-Angle Shower with 7" Threshold

- Molded soap ledge
- Center drain



RE3837

38"W X 38"D X 78 ¼"H

38" Shower with 6" Threshold

- Front center drain
- Dome available IN38B



RE3636SD

36"W X 36 ¾"D X 78"H

36" Shower with 6" Threshold

- Molded soap ledges
- Molded foot rest
- Dome available IN36B
- Center drain

STANDARD FEATURES

- AcrylX™ • Lifetime Warranty • Slip resistant floor • Complies with NAHB, HUD UM-73A & ANSI-Z124.1.2
- Accessories are optional • Full accessory line, page 62



RE5636

36"W X 35"D X 77 ¼"H

36" Shower with 7" Threshold

- Molded soap ledges
- Optional towel bar available (RE5636T)
- Dome available model #RE936
- Available with above the floor rough (RE5636X)
- Center drain



RE3632SD

36"W X 33"D X 78"H

36" Shower with 6" Threshold

- Molded soap ledges
- Molded foot rest
- Available in above the floor rough (RE3632SDX)
- Dome available IN36
- Center drain



RE5232X

32"W X 33"D X 76 ½"H

32" Shower with 8 ½" Threshold

- Molded soap ledges
- Above the floor rough
- Dome available model #RE932
- Center drain



RE5229

29 ½"W X 31 ½"D X 75 ½"H

30" Shower with 6" Threshold

- Molded soap ledges
- Does not comply with UPC dimensionally
- Center drain



4S10LT or 4S10RT
60"W X 33"D X 77"H

60" 4-Piece Shower with 7" Threshold

- E-Z Pin System
- Molded soap ledges
- Available with molded seat (opposite of valve wall)
- Acrylic towel bar
- Dome available
- Left or right hand drain



4S10LT/S or 4S10RT/S
60"W X 33"D X 77"H

60" 4-Piece Shower with 7" Threshold

- E-Z Pin System
- Molded soap ledges
- Molded seat (opposite of valve wall)
- Available without molded seat (4S10LT or 4S10RT)
- Acrylic towel bar
- Dome available
- Left or right hand drain



4S11L or 4S11R
60"W X 33"D X 76 1/4"H

60" 4-Piece Shower with 4" Threshold

- E-Z Pin System
- Molded soap ledges
- Available with molded seat (opposite of valve wall)
- Dome available
- Left or right hand drain



4S11L/S or 4S11R/S
60"W X 33"D X 76 1/4"H

60" 4-Piece Shower with 4" Threshold

- E-Z Pin System
- Molded soap ledges
- Molded seat (opposite of valve wall)
- Available without molded (4S11L or 4S11R)
- Dome available
- Left or right hand drain

STANDARD FEATURES

- AcrylX™ • Lifetime Warranty • Slip resistant floor • Complies with NAHB, HUD UM-73A & ANSI-Z124.1.2
- Accessories are optional • Full accessory line, page 62



RE6032LSDX or RE6032RSDX

59 3/4"W X 33"D X 80 3/4"H

60" 3-Piece with 7" Threshold

- Molded soap ledges
- Above the floor rough
- Available with E-Z Pin System (REZ6032LSDX or REZ6032RSDX)
- Left or right hand drain



RE6032LX/S or RE6032RX/S

59 3/4"W X 33"D X 80 3/4"H

60" 3-Piece Shower with 7" Threshold & Molded Seat

- Molded soap ledges
- Molded seat (opposite of valve wall)
- Above the floor rough
- Available with E-Z Pin System (REZ6032LX/S or REZ6032RX/S)
- Left or right hand drain



4S40LT/S or 4S40RT/S

60"W X 30"D X 74"H

60" 4-Piece Shower with 4" Threshold

- E-Z Pin System
- Molded soap ledges
- Molded seat (opposite of valve wall)
- Acrylic towel bar
- Available without molded seat (4S40LT or RT)
- Left or right hand drain



RE9954X

54"W X 28"D X 75 1/2"H

54" 3-Piece Shower with 8 1/2" Threshold

- Molded soap ledges
- Above the floor rough
- Available with E-Z Pin System (REZ9954X)
- Rear center drain



RE9648

48"W X 36"D X 77"H

48" 3-Piece Shower with 6" Threshold

- Molded soap ledges
- Two molded seats
- Dome available model #RE948B
- Available with above the floor rough
- Available with E-Z Pin System (REZ9648)
- Center drain



RE6843LT/S or RE6843RT/S

48"W X 36"D X 76 ½"H

48" 2-Piece Shower with 6" Threshold & Molded Seat

- Molded soap ledges and seat (opposite of valve wall)
- Acrylic towel bar
- Dome available model #RE948
- Available with above the floor rough
- Available with E-Z Pin System (REZ6843LT/S or REZ6843RT/S)
- Center drain



4S30C

48"W X 36"D X 77"H

48" 4-Piece Shower with 7" Threshold

- E-Z Pin System
- Molded soap ledges
- Center drain



4S30L/S or 4S30R/S

48"W X 36"D X 77"H

48" 4-Piece Shower with 7" Threshold

- E-Z Pin System
- Molded soap ledges
- Molded seat (opposite of valve wall)
- Center drain

STANDARD FEATURES

- AcrylX™ • Lifetime Warranty • Slip resistant floor • Complies with NAHB, HUD UM-73A & ANSI-Z124.1.2
- Accessories are optional • Full accessory line, page 62



RE1839

38 ½"W X 38 ½"D X 80 ¼"H

39" 3-Piece Neo-Angle Shower with 7" Threshold

- Molded soap ledge
- Center drain



4S20C

36"W X 36"D X 77"H

36" 4-Piece Shower with 4" Threshold

- E-Z Pin System
- Molded soap ledges
- Center drain



RE6636

36"W X 35"D X 77 ¼"H

36" 2-Piece Shower with 7" Threshold

- Molded soap ledges
- Dome available model #RE936
- Optional acrylic towel bar available (RE6636T)
- Available with E-Z Pin System (REZ6636)
- Center drain



RE9636

36"W X 35"D X 77 ¼"H

36" 3-Piece Shower with 7" Threshold

- Molded soap ledges
- Dome available model #RE936
- Available with E-Z Pin System (REZ9636)
- Center drain



RE6232

32"W X 33"D X 74"H

32" 2-Piece Shower with 6" Threshold

- Molded soap ledges
- Dome available model #RE932
- Available with E-Z Pin System (REZ6232)
- Center drain



AcrylX

with the strength of
ARMORCORE™

**EXCEPTIONAL STRENGTH
SUPERIOR FINISH
LIFETIME WARRANTY**

Model No. SP4848L/S



Standard Colors: White, Biscuit and Bone.
Premium colors available. See page 98.

SHOWER BASES

Create your own, unique shower enclosure, but start with a strong, quality foundation. From barrier-free to highly functional molded seats, Clarion has a wide selection of shower bases that allow you to design your own custom shower room.

Durable one-piece bases feature strong, AcrylX™ applied acrylic construction with textured, slip-resistant floors.

STANDARD FEATURES

- AcrylX™ • Lifetime Warranty • Slip resistant floor • Complies with NAHB, HUD UM-73A & ANSI-Z124.1.2
- Accessories are optional • Full accessory line, page 62



SP7861

77 ¾" W X 61" D X 9" H

77 ¾" x 61" Shower Base with 8" Threshold

- Two drains



SP7248NT

72" W X 48" D X 7 ½" H

72" x 48" Shower Base with Tiling Flange All Sides (No Threshold)

- Four tiling flanges
- Available with molded seat
- End drain



SP6041

60" W X 41" D X 5" H

60" x 41" Shower Base with 4" Threshold

- Center drain



SP6036DT

60" W X 36" D X 7" H

60" x 36" Shower Base with Two 6" Thresholds

- Front threshold
- Rear threshold
- Center drain



SP6034

60" W X 34" D X 7" H

60" x 34" Shower Base with 6" Threshold

- Center drain



SP6032BF34

60" W X 33" D X 4" H

60" x 33" Barrier-Free Shower Base with ¾" Threshold

- Floor nailing flange
- Center drain



SP6231BF34

62"W X 32"D X 4 1/4"H

62" x 32" ADA-Compliant Shower Base with 3/4" Threshold

- Floor nailing flange
- Center drain



SP6030L or SP6030R

60"W X 30"D X 7"H

60" x 30" Shower Base with 6" Threshold

- Left or right hand drain
- Available above the floor rough (SP6030LX or SP6032RX)



SP5435

54"W X 35"D X 7"H

54" x 35" Shower Base with 6" Threshold

- Center drain



SP5435L/S or SP5435R/S

54"W X 35"D X 31"H

54" x 35" Shower Base with 6" Threshold and Molded Seat

- Molded seat
- Center drain



SP4848

48"W X 48"D X 5"H

48" x 48" Shower Base with 4" Threshold

- Rear center drain



SP4848/S

48"W X 48"D X 23"H

48" x 48" Shower Base with 6" Threshold and Bench Seat

- Molded bench seat
- Center drain

STANDARD FEATURES

- AcrylX™ • Lifetime Warranty • Slip resistant floor • Complies with NAHB, HUD UM-73A & ANSI-Z124.1.2
- Accessories are optional • Full accessory line, page 62



SP4848L/S (*Front and Left Side Threshold*)

SP4848R/S (*Front and Right Side Threshold*)

48"W X 48"D X 23"H

48" x 48" Corner Shower Base with Two 6" Thresholds

- Molded bench seat
- Front and side threshold
- Center drain



SP4835

48"W X 35"D X 7"H

48" x 35" Shower Base with 6" Threshold

- Center drain



SP4835L (*Front and Right Side Threshold*)

SP4835R (*Front and Left Side Threshold*)

48"W X 35"D X 7"H

48" x 35" Corner Shower Base with Two 6" Thresholds

- Front and side threshold
- Center drain



SP4835L/S or SP4835R/S

48"W X 35"D X 31"H

48" x 35" Shower Base with 6" Threshold & Molded Seat

- Molded seat
- Center drain



SP3838

38"W X 38"D X 7"H

38" x 38" Neo-Angle Shower Base with 6" Threshold

- Center drain



SP3635

36"W X 35"D X 7"H

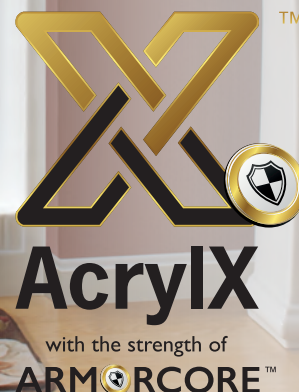
36" x 35" Shower Base with 6" Threshold

- Center drain

DESIGNED TO LAST

Clarion Bathware is designed to last. Our showers are made with two layers of fiberglass laminate and extra reinforcement in stress areas.

EXCEPTIONAL STRENGTH
SUPERIOR FINISH
LIFETIME WARRANTY



Model No. RE8848DRT/S



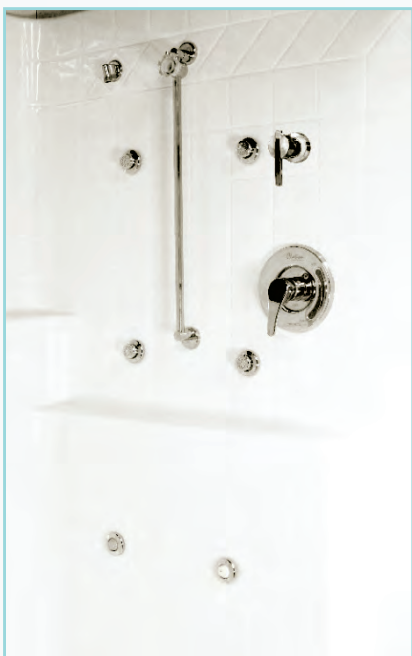
Standard Colors: White, Biscuit and Bone.
Premium colors available. See page 98.

MASTER SHOWER COLLECTION

Ready for the best? For those who desire luxury and convenience, we proudly present the Master Shower Collection from Clarion Bathware.

Larger than standard showers, these models feature beautiful tile design, decorative Premium Cast Acrylic block wall and high quality AcrylXTM finish. Popular options include molded soap ledges and seating, towel bars and footrests.

MASTER SHOWER SPA JETS



Put some excitement in your shower!

Strategically placed spa jets will energize your body at the beginning of the day and de-stress tired muscles at the end of a long day. Enjoy the luxury of a spa shower every day.

- All Clarion Bathware showers are available with spa jets
- Designed to offer maximum water coverage
- Standard jet placement with adjustable heads
- Two jet options: Super Spray or Pulsating
- Sold in sets of six jets, pre-plumbed, diverter included

See page 62–65 for our complete selection of shower accessories to customize your Master Shower experience.

SUPER SPRAY SPA JETS



PULSATING SPA JETS





MASTER SHOWER COLLECTION

EXPERIENCE EVERYDAY LUXURY

Clarion's Master Shower Collection takes luxury to the next level. Oversized shower bases, ergonomic seating, foot rests, spa jet packages, multiple shower heads and decorative tiles are just a few of the design elements that make this exclusive collection our most celebrated line.

Design the shower of your dreams and experience luxury every day!

ASK ABOUT OUR SPA JET PACKAGES!



SUPER SPRAY



PULSATING

The RE8860X is a Wet & Dry Master Shower Room Assembly, that fits through a 30" door!

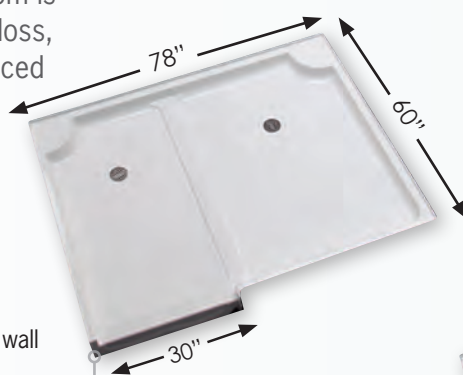
The Wet & Dry Master Shower Room is a five-piece unit made from high-gloss, gel-coated fiberglass and a reinforced wood floor.

RE8860X

78"W X 60"D X 82"H

78" 4-Piece Walk-In Master Shower

- 6' ½" x 5" Wet & Dry Shower Room
- 4 piece shower with acrylic glass block wall
- Simulated tile wall
- Molded soap ledge and seats
- Wood reinforced/slip resistant floor
- 1" nailing flange
- Above the floor rough
- Two drains
- All dimensions +/- ¼"



Clarion's innovative ergonomic seat

STANDARD FEATURES

- AcrylX™ • Lifetime Warranty • Slip resistant floor • Complies with NAHB, HUD UM-73A & ANSI-Z124.1.2
- Accessories are optional • Full accessory line, page 62



Outside



Inside

RE8848DLT/S or RE8848DRT/S

60"W X 48"D X 78"H

60" Tiled Shower with 7" Threshold & Shower Door

- Simulated tile wall
- Molded soap ledges
- Molded bench (opposite of valve wall)
- Molded foot rest
- Acrylic towel bar
- Standard shower door with buttress
- Center drain



STANDARD FEATURES

- AcrylX™ • Lifetime Warranty • Slip resistant floor • Complies with NAHB, HUD UM-73A & ANSI-Z124.1.2
- Accessories are optional • Full accessory line, page 62



RE8802LX or RE8802RX

102"W X 44"D X 78"H

Tiled Shower and Bathtub Combination

- Molded arm rests in bathing well
- Molded soap ledges & seat in shower
- Available with access panel (RE8802LAX or RE8802RAX)
- Shower model available separately (RE8843X)
- Tub model available separately (RE8864LX or RE8864RX)
- Standard shower door with buttress



RE8848T

60"W X 48"D X 78"H

60" Tiled Shower with 7" Threshold

- Simulated tile wall
- Molded soap ledges
- Molded foot rest
- Acrylic towel bar
- Center drain



RE4924

49"W X 49"D X 76 ¾"H

49" Shower with 7" Threshold & Molded Seats

- Molded soap ledges
- Two molded seats
- Available with above the floor rough (RE4924X)
- Center drain



RE8648XT

48"W X 46"D X 78"H

48" Tiled Shower with 9" Threshold

- Simulated tile wall
- Molded soap ledges
- Two molded seats
- Molded foot rest
- Above the floor rough
- Acrylic towel bar
- Center drain



RE8846DLXT/S or RE8846DRXT/S

60"W X 43"D X 77 ½"H

60" Tiled Shower with 8 ½" Threshold

- AcrylX™
- Above the floor rough
- Simulated tile wall
- Molded soap ledges
- Large molded bench (opposite of valve wall)
- Molded foot rest
- Acrylic towel bar
- Available non above the floor rough (RE8846DLT/S or RE8846DRT/S)
- Center drain

PERFECT FOR CLEANING THAT DIRTY DOG!

Pet Shower

36"W X 27 ½"D X 36"H

Utility/Pet Shower

- One-Piece Utility/Pet Shower
- Multi-purpose product is useful for a number of tasks (washing pets, spraying off house hold items, emptying mop buckets, ect.)
- Reinforced AcrylX™ construction
- Molded shelf in the corner of the unit
- Slip resistant floor
- Center drain location
- Lifetime warranty



Standard Colors: White, Biscuit and Bone.
Premium colors available. See page 98.

36" UTILITY/PET SHOWER

Keep dirt where it belongs. A convenient, multi-purpose solution for your garage or basement from American-made Clarion Bathware.

One-piece applied acrylic reinforced AcrylX™ construction with a textured, slip-resistant floor and Lifetime Warranty.



Model No. 4T10LT



Standard Colors: White, Biscuit and Bone.
Premium colors available. See page 98.

TUB/SHOWERS

We call it space-saving versatility. Whether you need a shower and a bathtub in one space or simply want the most space-efficient option, Clarion Bathware bathtub/shower combinations are a great choice. Enjoy the refreshing space of a bathtub in combination with the utility of a shower stall.



WHIRLPOOL OPTIONAL Many Clarion Tub/Soakers can be ordered with a whirlpool base. All units with this option will have this mark next to them.



BUBBLE JET & WHIRLPOOL OPTIONAL Many Clarion Tub/Soakers can be ordered with a whirlpool or a bubble jet base. All units available with both options will have this mark next to them.

STANDARD FEATURES

Cast Acrylic • 6 Year Warranty • Slip resistant floor • Integral Dome • Complies with NAHB, HUD UM-73A & ANSI-Z124.1.2 • Accessories are optional • Full accessory line, page 62



AF6036TSLT or AF6036TSRT
62"W X 36"D X 85"H

60" Cast Acrylic Tub/Shower with 18" Apron

- Available with diamond pattern on back wall (AR6036TSLT or AR6036TSRT)
- Molded soap ledges
- Acrylic towel bar
- Left or right hand drain



AF6034TSLT or AF6034TSRT
62"W X 34"D X 85"H

60" Cast Acrylic Tub/Shower with 18" Apron

- Available with diamond pattern on back wall (AR6034TSLT or AR6034TSRT)
- Molded soap ledges
- Acrylic towel bar
- Left or right hand drain



AF6032TSLT or AF6032TSRT
62"W X 32"D X 85"H

60" Cast Acrylic Tub/Shower with 18" Apron

- Available with diamond pattern on back wall (AR6032TSLT or AR6032TSRT)
- Molded soap ledges
- Acrylic towel bar
- Left or right hand drain



Customize Any Shower

All Clarion Bathware showers are available with spa jets, LED lights and so much more.

See page 62–65 for our complete selection of shower accessories to complete your experience.

Have a question? Call 1 (800) 576-9228 today, to talk to our friendly and knowledgeable staff.



RE7236LT or RE7236RT
72"W X 37"D X 78 ½"H

72" Tub/Shower with 19 ½" Apron

- Molded soap ledges
- Acrylic towel bar
- Left or right hand drain



RE3048XT
60"W X 48"D X 76 ½"H

60" Tub/Shower with 21" Apron

- Molded step
- Molded soap ledges
- Molded arm rests
- Acrylic towel bar
- Above the floor rough
- Rear center drain



RE3060X
60"W X 42"D X 78 ¼"H

60" Tub/Shower with 21" Apron

- Molded soap ledges
- Molded arm rests
- Above the floor rough
- Available with access panel (RE3060AX)
- Center drain



RE8042LXT or RE8042RXT
60"W X 42"D X 76"H

60" Tiled Tub/Shower with 18" Apron

- Simulated tile wall
- Molded soap ledges
- Molded arm rests
- Acrylic towel bar
- Above the floor rough
- Left or right hand drain

STANDARD FEATURES

- AcrylX™ • Lifetime Warranty • Slip resistant floor • Complies with NAHB, HUD UM-73A & ANSI-Z124.1.2
- Accessories are optional • Full accessory line, page 62



RE7941XT
60"W X 41"D X 77"H

60" Tub/Shower with 19" Apron

- Molded soap ledges
- Acrylic towel bar
- Above the floor rough
- Rear center drain



RE8840LXT or RE8840RXT
60"W X 41"D X 77"H

60" Tub/Shower with 18" Bowed Apron

- Simulated tile walls
- Molded soap ledges
- Molded arm rests
- Acrylic towel bar
- Above the floor rough
- Left or right hand drain



RE7936LXT or RE7936RXT
60"W X 36"D X 78 1/2"H

60" Tub/Shower with 19 1/2" Apron

- Molded soap ledges
- Acrylic towel bar
- Above the floor rough
- Dome available model #IN60C
- Available with removable access panel (RE7936LAXT or RE7936RAXT)
- Left or right hand drain



RE8836LXT or RE8836RXT
60"W X 36"D X 76"H

60" Tiled Tub/Shower with 18" Apron

- Simulated tile wall
- Molded soap ledges
- Molded arm rests
- Acrylic towel bar
- Above the floor rough
- Left or right hand drain



RE7905LT or RE7905RT
60"W X 33"D X 74"H

60" Tub/Shower with 15" Apron

- Molded soap ledges
- Acrylic towel bar
- Available in above the floor rough (RE7905LXT or RE7905RXT)
- Dome available model #RE962
- Left or right hand drain



RE7901L or RE7901R
60"W X 33"D X 72"H

60" Tub/Shower with 15" Apron

- Molded soap ledges
- Optional acrylic towel bar available (RE7901LT or RE7901RT)
- Above the floor rough available (RE7901LX or RE7901RX)
- Left or right hand drain
- Contemporary design



RE7940XT
60"W X 33"D X 76 ½"H

60" Tub/Shower with 18" Apron

- Molded soap ledges
- Acrylic towel bar
- Above the floor rough
- Rear center drain



RE8800LXT or RE8800RXT
59 ¾"W X 33"D X 76 ½"H

60" Tiled Tub/Shower with 17" Apron

- Simulated tile wall
- Molded soap ledges
- Acrylic towel bar
- Above the floor rough
- Left or right hand drain

STANDARD FEATURES

- AcrylX™ • Lifetime Warranty • Slip resistant floor • Complies with NAHB, HUD UM-73A & ANSI-Z124.1.2
- Accessories are optional • Full accessory line, page 62



RE7931LT or RE7931RT
60"W X 31"D X 74"H

60" Tub/Shower with 15" Apron

- Molded soap ledges
- Acrylic towel bar
- Available in above the floor rough (RE7931LXT or RE7931RXT)
- Left or right hand drain



RE7930XT
60"W X 30"D X 77"H

60" Tub/Shower with 18" Apron

- Molded soap ledges
- Acrylic towel bar
- Above the floor rough
- Center drain



**BUILDER
MODEL**



RE7933LT or RE7933RT
60"W X 30"D X 75 ½"H

60" Tub/Shower with 16 ½" Apron

- Molded soap ledges
- Acrylic towel bar
- Available in above the floor rough (RE7933LXT or RE7933RXT)
- Dome available model #RE931
- Left or right hand drain



RE8830LX or RE8830RX
59 ¾"W X 30"D X 78"H

60" Tiled Tub/Shower with 18 ½" Apron

- Simulated tile wall
- Molded soap ledges
- Above the floor rough
- Left or right hand drain



RE2054

54"W X 42"D X 78 ¾"H

54" Garden Tub/Shower with 19 ½" Apron

- Molded soap ledges
- Molded arm rests
- Molded lumbar support
- Rear center drain



RE7400X

54"W X 28"D X 72"H

54" Tub/Shower with 17 ½" Apron

- Molded soap ledges
- Optional acrylic towel bar available (RE7400XT)
- Above the floor rough
- Available left or right hand drain (RE7403LX or RE7403RX)
- Rear center drain



Remodeling made easy, with our patented E-Z Pin System



NO NUTS OR BOLTS NEEDED!

- Step 1** Frame a square and plumb pocket.
Step 2 Set, level, and secure base.
Step 3 Apply sealant. Install back wall.
Step 4 Apply sealant. Install left and right wall section.



Step 1



Step 2



Step 3



Step 4

*See page 5 for more information.

STANDARD FEATURES

- AcrylX™ • Lifetime Warranty • Slip resistant floor • Complies with NAHB, HUD UM-73A & ANSI-Z124.1.2 • Accessories are optional • Full accessory line, page 62



4T10LT or 4T10RT
60"W X 33"D X 75"H

60" 4-Piece Tub/Shower with 18" Apron

- E-Z Pin System
- Molded soap ledges
- Acrylic towel bar
- Dome available
- Left or right hand drain



4T11L or 4T11R
60"W X 33"D X 75"H

60" 4-Piece Tub/Shower with 18" Apron

- E-Z Pin System
- Molded soap ledges
- Dome available
- Left or right hand drain



RE6032LA or RE6032RA
59 3/4"W X 33"D X 78 1/4"H

60" 3-Piece Tub/Shower with 18" Apron

- Molded soap ledges
- Removable access panel
- Available with E-Z Pin System (REZ6032LA or REZ6032RA)
- Available with 4 & 6 jet whirlpool systems
- Available above the floor rough
- Available without removable access panel (RE6032L or RE6032R)
- Left or right hand drain



RE8623LT or RE8623RT
59 3/4"W X 32 3/4"D X 73 3/4"H

60" 2-Piece Tub/Shower with 15" Apron

- Molded soap ledges
- Acrylic towel bar
- Left or right hand drain
- Available with E-Z Pin System (REZ8623LT or REZ8623RT)

STANDARD FEATURES

- AcrylX™ • Lifetime Warranty • Slip resistant floor • Complies with NAHB, HUD UM-73A & ANSI-Z124.1.2
- Accessories are optional • Full accessory line, page 62



RE9623LT or RE9623RT

59 3/4"W X 32 3/4"D X 73 1/2"H

60" 3-Piece Tub/Shower with 15" Apron

- Molded soap ledges
- Acrylic towel bar
- Left or right hand drain
- Available with E-Z Pin System (RE9623LT or RE9623RT)
- Available with a dome (RE961)



4T40LT or 4T40RT

60"W X 30"D X 75"H

60" 4-Piece Tub/Shower with 18" Apron

- E-Z Pin System
- Molded soap ledges
- Acrylic towel bar
- Left or right hand drain



RE8633LT or RE8633RT

59 1/2"W X 30"D X 74 1/4"H

60" 2-Piece Tub/Shower with 15" Apron

- Molded soap ledges
- Acrylic towel bar
- Available with E-Z Pin System (RE8633LT or RE8633RT)
- Left or right hand drain



RE9654X

54"W X 28"D X 75"H

54" 3-Piece Tub/Shower with 17 1/2" Apron

- Molded soap ledges
- Above the floor rough
- Available with E-Z Pin System (RE9654X)
- Available left or right hand drain (RE9654LX or RE9654RX)
- Center drain



RE8403LX or RE8403RX

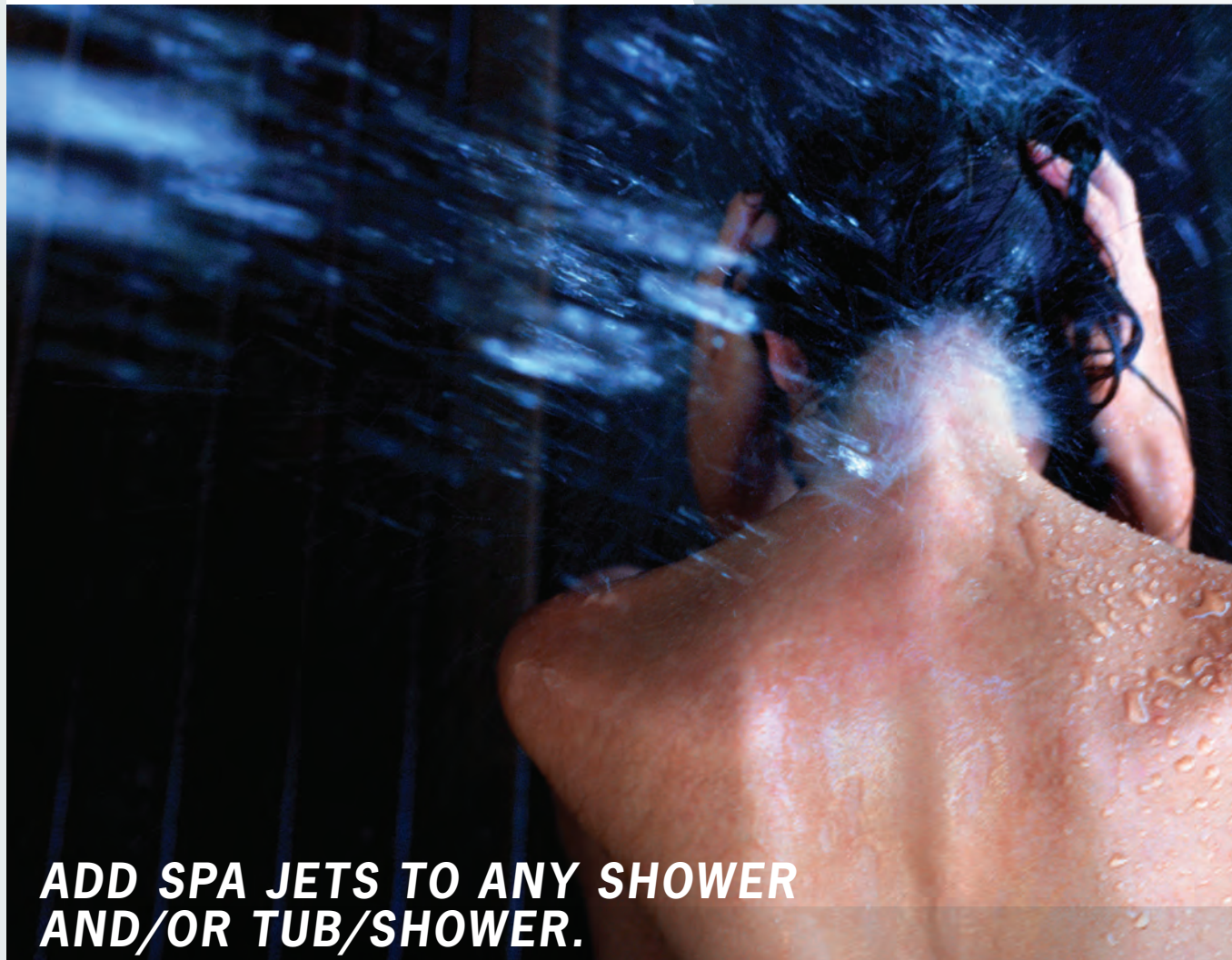
54"W X 28"D X 75"H

54" 2-Piece Tub/Shower with 17 1/2" Apron

- Molded soap ledges
- Optional towel bar available (RE8403LXT or RE8403RXT)
- Above the floor rough
- Left or right hand drain
- Available with E-Z Pin System (RE8403LX or RE8403RX)

SHOWER SPA JETS

PUT SOME EXCITEMENT
IN YOUR SHOWER



**ADD SPA JETS TO ANY SHOWER
AND/OR TUB/SHOWER.**



Standard 6 Pack Installation

See page 47 for more info.

STANDARD SHOWER SPA JET PACKAGES AVAILABLE



SUPER SPRAY SPA JETS
Adjustable Jet with multiple openings providing a tonic massage that can be directed to any part of the body. Operates water flow/pressure of 30 PSI. 1.02 US gallon/minute. Jet diameter: 2 3/16". Sold in packs of six. Diverter included.



PULSATING SPA JETS
Jet with central opening that creates a pulsating massage that operates at water flow/pressure of 30 PSI. 0.85 US gallon/minute. Jet diameter: 2 3/16". Sold in packs of six. Diverter included.



Standard Colors: White, Biscuit and Bone.
Premium colors available. See page 98.

ACCESSORIES

That's right, it's your bathroom. So pick the perfect soap dish and just the right lighting. It's everyday luxury from Clarion Bathware.

Choose from our extensive line of options, like showers heads and drains as well as mood and LED surround lighting systems. Like our bathware, all our accessories offer a proven combination of appealing design and great value.

SHOWER SPA JETS



SUPER SPRAY SPA JETS

Adjustable Jet with multiple openings providing a tonic massage that can be directed to any part of the body. Operates water flow/pressure of 30 PSI. 1.02 US gallon/minute. Jet diameter: 2 3/16". Sold in packs of six. Diverter included.



PULSATING SPA JETS

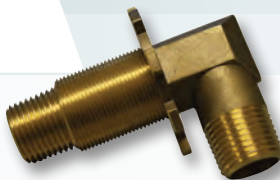
Jet with central opening that creates a pulsating massage that operates at water flow/pressure of 30 PSI. 0.85 US gallon/minute. Jet diameter: 2 3/16". Sold in packs of six. Diverter included.



PLUMBING



FIXED SHOWER HEAD



BRASS ELBOW



BRASS SHOWER DRAIN
2" brass no caulk drain.



ZURN® PRESSURE BALANCING MIXING VALVE

Automatically adjusts to equalize the hot and cold water pressure.



ZURN® DIVERTOR VALVE



GLIDE BAR HAND HELD SHOWER

Adjustable hand held shower.



GRAB BAR HAND HELD SHOWER

Adjustable hand held shower.

SOAP DISH



COMPOSITE SOAP DISH

Surface mount design. Compatible with all showers and tub/showers. Available in standard white, biscuit and bone. All other colors require extended lead time.



BRUSHED STAINLESS STEEL SOAP DISH



POLISHED STAINLESS STEEL SOAP DISH
Removable acrylic tray.

LIGHTING



2" SPA MOOD LIGHTS

Energy efficient, long life LEDs. Cycles through the following colors: Clear, Pink, Red, Light Green, Dark Green, Lavender, Light Blue, Dark Blue. (120V/1Amp/20Amp GFI).



12 STRING LED SURROUND LIGHTS

Small LED mood lights. Cycles through the following colors: Clear, Pink, Red, Light Green, Dark Green, Lavender, Light Blue, Dark Blue. (12V/24Amp/20Amp GFI).



DOME LIGHT

Perfect for shower lighting. Requires joist for attachment.

CURTAINS



STANDARD WEIGHTED CURTAIN
Vinyl, weighted shower curtain.
Stainless steel hooks included.
Sizes: 48" x 72" and 72" x 72"



PREMIUM WEIGHTED CURTAIN
Heavy duty, weighted, vinyl curtain.
40% thicker and mildew-resistant.
Stainless steel hooks included.
Sizes: 48" x 72" and 72" x 72"



CURTAIN ROD
Sizes: 29" to 59 1/4"



GROMMET FLANGE
New grommet flange
for increased durability.
Fits standard shower
curtain rod.

SEATS



4 LEGGED PHENOLIC FOLDING SHOWER SEAT Frame available in stainless steel and powder coated white. Seat folds up for easy access.



STANDARD 4 LEGGED FOLDING SHOWER SEAT Frame available in stainless steel and powder coated white. Folds up for easy access.



Closed



Open

FOLDING PHENOLIC TUB/SHOWER SEAT WITH HEAD REST
Only available for 6032 Tub/Shower series.
Folds against sidewall.



Closed



FOLDING PHENOLIC TUB/SHOWER SEAT
Available for certain units. Folds against back wall.



REMOVABLE PHENOLIC TUB/SHOWER SEAT
Only available in white and for certain units.

REMOVABLE/THRESHOLDS



COLLAPSIBLE THRESHOLD
Available with end caps.

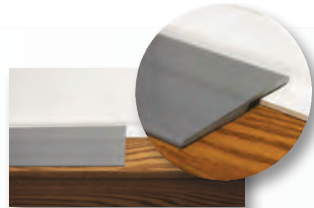


CAST ACRYLIC THRESHOLD
Removable Cast Acrylic threshold.
Size: 2" x 2"



ACRYLX™ THRESHOLD
Available for specific units only.

TRIM OPTIONS



E-Z FLOOR TRIM
Available for 3/4" shower units.

E-Z WALL TRIM
Clarion's E-Z Wall Trim is a composite material that is impervious to water, can be attached with silicone caulking, finish nails or screws. Can be painted. Easy to install. Pre-mitered. Available for any unit.



TRIM KIT (TK or TKL) two front pieces, two side pieces and one back piece un-trimmed.

E-Z TRIM KIT (TKEZ or TKEZL) two front pieces, two side pieces with a 45° angle pre-cut, one back piece un-trimmed.



CUSTOM TRIMMED TK (Model#) Custom fit trimmed to your shower and tub shower unit.

SHOWER BARS

CORNER BAR

Flanged Bar, available in stainless steel, stainless steel textured, smooth white, white textured.

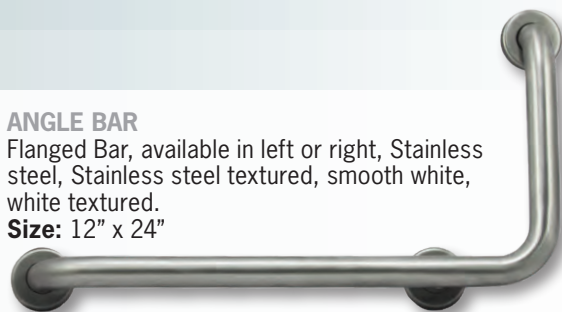
Sizes: 30" x 18" 32" x 22"
32" x 18" 42" x 20"
25" x 28" 44" x 26"



ANGLE BAR

Flanged Bar, available in left or right, Stainless steel, Stainless steel textured, smooth white, white textured.

Size: 12" x 24"



ERGO BARS

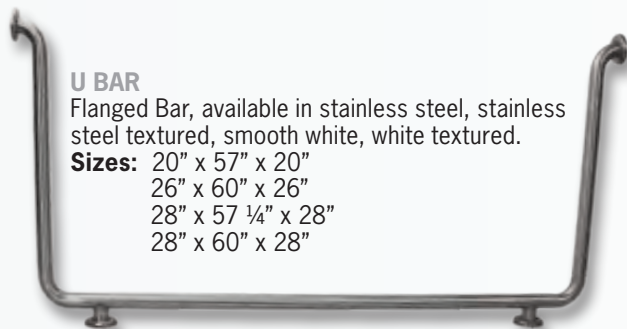
High quality grab bars. Sizes available 6" or 11". Compliant to the 250 lbs shear test in accordance with ASTM:F446-85 and CSA B45 0-02.



U BAR

Flanged Bar, available in stainless steel, stainless steel textured, smooth white, white textured.

Sizes: 20" x 57" x 20"
26" x 60" x 26"
28" x 57 1/4" x 28"
28" x 60" x 28"



STRAIGHT BAR

Flanged Bar, available in 1 1/2", 1 1/4" only, stainless steel, stainless steel textured, smooth white, white textured.

Sizes: 12", 14", 16", 18", 20", 24", 36", 40", 42", 48"



J-BAR

Flangeless Bar, available in 1 1/4" only, smooth white, white textured.

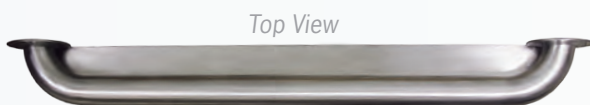
Size: 26 3/4"



FLANGELESS BAR

Flangeless Bar, available in 1 1/4" only, stainless steel, smooth white, white textured.

Sizes: 12", 18", 24"



Top View

PSYCHIATRIC BAR

Clarion designed Psychiatric Bar. ADA-compliant. Available by special order.



Front View



Back View

DOMES

DOMES

You can add a dome to many of our showers or tub/showers. Shower stalls that are dome compatible will have a bullet under the product number that says "dome available".





AcrylX

with the strength of
ARMORCORE

**EXCEPTIONAL STRENGTH
SUPERIOR FINISH
LIFETIME WARRANTY**



Model No. MP3940BF34CD



Standard Colors: White, Biscuit and Bone.
Premium colors available. See page 98.

AGING IN PLACE

When life changes, so can the bathroom. Beautiful, safe and barrier-free.
That's the everyday luxury of Clarion Bathware.

These sectional showers and tub/showers offer peace of mind in more than 60 different Premium Cast Acrylic and AcrylX™ models. You can reduce the worry of falls even more by customizing with secured grab bars and accessories.

STANDARD FEATURES

- AcrylX™ • Lifetime Warranty • Slip resistant floor • Laminated wall reinforcement
- Complies with NAHB, HUD UM-73A & ANSI-Z124.1.2 • Accessories are optional • Full accessory line, page 62



MP8848LT/S or MP8848RT/S
60"W X 48"D X 78"H

60" Tiled Shower with 7" Threshold

- Molded soap ledges
- Molded seat (opposite of valve wall)
- Molded foot rest
- Acrylic towel bar
- 1-piece unit/not a sectional
- Center drain



4MS10LBF34T or 4MS10RBF34T
60"W X 33"D X 79 ¼"H

60" 4-Piece Barrier-Free Shower with ¾" Threshold

- E-Z Pin System
- Molded soap ledges
- Acrylic towel bar
- Dome available
- Center drain



4MS10LT or 4MS10RT
60"W X 33"D X 77"H

60" 4-Piece Shower with 7" Threshold

- E-Z Pin System
- Molded soap ledges
- Available with molded seat (opposite of valve wall) (4MS10LT/S or 4MS10RT/S)
- Acrylic towel bar
- Dome available
- Left or right hand drain



4MS11L/S or 4MS11R/S
60"W X 33"D X 76 ¼"H

60" 4-Piece Shower with 4" Threshold

- E-Z Pin System
- Molded soap ledges
- Molded seat (opposite of valve wall)
- Available without molded seat (4MS11L or 4MS11R)
- Dome available
- Left or right hand drain



4MT10LT or 4MT10RT
60"W X 33"D X 75"H

60" 4-Piece Tub/Shower 18" Apron

- E-Z Pin System
- Molded soap ledges
- Acrylic towel bar
- Dome available
- Left or right hand drain



4MT11L or 4MT11R
60"W X 33"D X 75"H

60" ADA-Compliant 4-Piece Tub/Shower with Flat Back Wall and 18" Apron

- E-Z Pin System
- Molded soap ledges
- Dome available
- Left or right hand drain



MP6032LBF or MP6032RBF
59 3/4"W X 33"D X 77 3/4"H

60" 3-Piece Barrier-Free Shower with 2" Threshold

- Molded soap ledges
- Available with E-Z Pin System (MPZ6032RBF or MPZ6032LBF)
- Left or right hand drain



MP6032LSDX or MP6032RSDX
59 3/4"W X 33"D X 80 3/4"H

60" 3-Piece Shower with 7" Threshold

- Molded soap ledges
- Available with E-Z Pin System (MPZ6032RSDX or MPZ6032LSDX)
- Above the floor rough
- Left or right hand drain

STANDARD FEATURES

- AcrylX™ • Lifetime Warranty • Slip resistant floor • Complies with NAHB, HUD UM-73A & ANSI-Z124.1.2
- Accessories are optional • Full accessory line, page 62



MP6032LX/S or MP6032RX/S
59 3/4"W X 33"D X 80 3/4"H

60" 3-Piece Shower with 7" Threshold

- Molded soap ledges
- Molded seat (opposite of valve wall)
- Available with E-Z Pin System (MPZ6032LXS or MPZ6032RXS)
- Above the floor rough
- Left or right hand drain



4MS40LT or 4MS40RT
60"W X 30"D X 74"H

60" 4-Piece Shower with 4" Threshold

- E-Z Pin System
- Molded soap ledges
- Acrylic towel bar
- Available with molded seat (4MS40LT/S or 4MS40RT/S)
- Left or right hand drain

NO NUTS OR BOLTS NEEDED!



*See page 5 for more information.



Remodeling made easy, with our patented E-Z Pin System

- Step 1** Frame a square and plumb pocket.
- Step 2** Set, level, and secure base.
- Step 3** Apply sealant. Install back wall.
- Step 4** Apply sealant. Install left and right wall section.



Step 1



Step 2



Step 3



Step 4



4MS40LT/S or 4MS40RT/S
60"W X 30"D X 74"H

60" 4-Piece Shower with 4" Threshold

- E-Z Pin System
- Molded soap ledges
- Acrylic towel bar
- Available without molded seat (4MS40LT or 4MS40RT)
- Left or right hand drain



4MT40LT or 4MT40RT
60"W X 30"D X 75"H

60" 4-Piece Tub/Shower with 18" Apron

- E-Z Pin System
- Molded soap ledges
- Acrylic towel bar
- Left or right hand drain



MP9954X
54"W X 28"D X 75 ½"H

54" 3-Piece Shower with 8 ½" Threshold

- Molded soap ledges
- Available with E-Z Pin System (MPZ9954X)
- Above the floor rough
- Rear center drain



4MS30L/S or 4MS30R/S
48"W X 36"D X 77"H

48" 4-Piece Shower with 7" Threshold

- E-Z Pin System
- Molded soap ledges
- Molded seat (opposite of valve wall)
- Available without molded seat (4MS30LC or 4MS30RC)
- Center drain

STANDARD FEATURES

- AcrylX™ • Lifetime Warranty • Slip resistant floor • Complies with NAHB, HUD UM-73A & ANSI-Z124.1.2
- Accessories are optional • Full accessory line, page 62



MP5848X
48"W X 36"D X 78"H

48" Shower with 8 ½" Threshold

- Molded soap ledges
- Two molded seats
- Above the floor rough
- Dome available model #RE948B
- 1-piece unit/not a sectional
- Center drain



4MS20LC or 4MS20RC
36"W X 36"D X 77"H

36" 4-Piece Shower with 4" Threshold

- E-Z Pin System
- Molded soap ledges
- Center drain



MP9636
36"W X 35"D X 77 ¼"H

36" 3-Piece Shower with 7" Threshold

- Molded soap ledges
- Available dome model #RE936
- Available with E-Z Pin System (MPZ9636)
- Center drain



Dome

You can add a dome to many of our showers or tub/showers. Shower stalls that are dome compatible will have a bullet under the product number that says "dome available".

NEW SEATS

The new standards in bathware accessibility.



400-22"-SDL
400-28"-SDL
400-33 ½"-SDL

Shown in Stainless Steel

FOLDING BARIATRIC SEAT

Bariatric rated and safer than our competitor's seat. Our innovative design takes the weight off the shower wall and distributes it evenly on the shower floor.

- ADA-compliant
- Improved accessibility
- Solid four legged bariatric style folding seat frame
- Enlarged rectangle water-resistant seat pad
- Improved weight distribution/support
- Supports up to 400 lbs
- Available as 22", 28" or 33 ½" lengths
- Easy installation

Available in stainless steel or by special order white powder-coated frame.



NON-SLIP SHOWER SEAT

This ADA-compliant shower seat offers a true sense of security.

- Adjustable seat height of 15" to 20"
- Supports up to 400 lbs
- Non-slip seat surface 19" W x 17.7" D

NEW BARS

Safety never looked this good!



SHELF GRAB BAR

This multi-purpose bar offers additional safety, stability and organization to your tub/shower. The grab bar supports up to 250 lbs, and the built in shelf can easily hold multiple bottles of your favorite shampoo. Why clutter your shower with fixtures, when you can have one that does it all!

Bar size: 18"

Available in stainless steel, brushed nickel and chrome.



WAVE BAR

Shower in style with the new wave bar. This grab bar will add a modern twist to your shower or tub/shower.

Bar size: 18" or 24"

Available in stainless steel, brushed nickel and chrome.



SHOWER VALVE SAFETY BAR

Enjoy the look of this beautiful safety bar placed around the mixing valve of your shower or tub/shower.

Available in stainless steel, brushed nickel and chrome.

Call today for availability
1 (800) 576-9228

FOR LOW PROFILE $\frac{3}{4}$ " SHOWERS

CLARION'S QUICK & E-Z INSTALLATION

Clarion's $\frac{3}{4}$ " ADA-compliant showers all use our E-Z install floor flange, making installations easy, clean and secure without having to recess.

All Clarion Bathware $\frac{3}{4}$ " barrier-free models meet ADA Standard 608.3 when flooring is finished properly.

TRANSFER SHOWER FLOOR FLANGE

Clarion's $\frac{3}{4}$ " barrier-free threshold for ADA-compliant transfer showers.



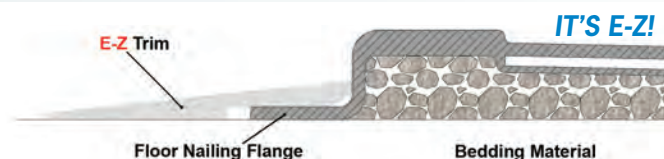
$\frac{3}{4}$ " ROLL-IN SHOWER FLANGE

Clarion's $\frac{3}{4}$ " barrier-free threshold for ADA-compliant roll-in showers.



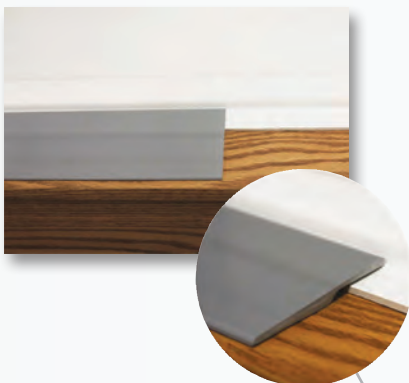
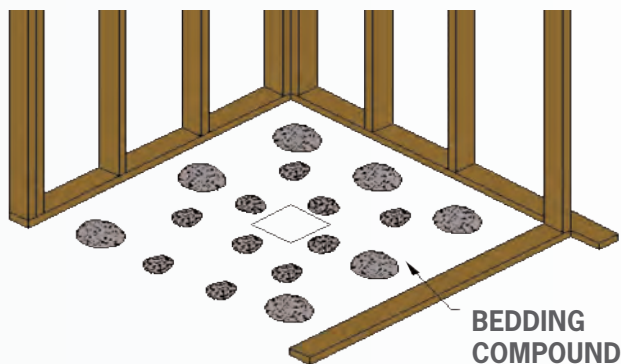
E-Z FLOOR FLANGE

Clarion Bathware offers E-Z Floor Trim for quick and easy installation to finish off the floor nailing flange. (Meets ADA Standard 405 for slope.)



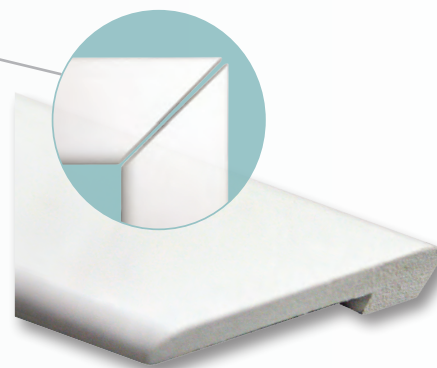
Mounding Method

Clarion's installation program simplifies the bedding support requirement by using self spreading mounds of light weight plaster. The light weight plaster compresses and spreads as the shower floor presses into the pocket, making a sturdy and void free foundation.



E-Z FLOOR TRIM

Clarion's E-Z Floor molding simply fits over our $\frac{3}{4}$ " floor attachment flange making a clean, easy and quick transition to the floor.



E-Z WALL TRIM

Clarion's E-Z Wall Trim is a composite material that is impervious to water, can be attached with silicone caulking, finish nails or screws. E-Z Trim can also be painted to match your decor.

SUPERIOR SAFETY STANDARDS

Clarion Bathware ships assisted care products nationwide. Available with pressure balanced mixing valves and 1 ½" stainless steel grab bars with 3" X 3" steel backing plates.



EXCEPTIONAL STRENGTH
SUPERIOR FINISH
LIFETIME WARRANTY

Model No. MP6333BF34



Standard Colors: White, Biscuit and Bone.
Premium colors available. See page 98.

INDEPENDENCE LINE®

ASSISTED LIVING & PERSONAL CARE

Including ADA-compliant products you can trust. Quality and value for assisted living and personal care facilities from Clarion Bathware.

Our showers and tub/showers offer enhanced independence and safety. These models come standard with slip-resistant floors and can be customized with a wide range of accessories and options.



ADA-compliant

STANDARD FEATURES

- Premium Cast Acrylic • 6 Year Warranty • Slip resistant floor • Complies with NAHB, HUD UM-73A & ANSI-Z124.1.2
- Integral Dome • Return flange • Reinforced walls • Accessories are optional • Shown with recommended accessories
- Full accessory line, page 62 • Complies with ADAAG and ANSI A117.1 when properly accessorized



ANL6436BF34 or ANR6436BF34
65 1/4" W X 36" D X 83 3/4" H

60" ADA-Compliant Cast Acrylic Barrier-Free Roll-In Shower with 3/4" Threshold

- Molded soap ledge
- Center drain



ANL6436BF or ANR6436BF
65 1/4" W X 36" D X 85" H

60" ADA-Compliant Cast Acrylic Barrier-Free Roll-In Shower with 2" Threshold

- Molded soap ledge
- Center drain



AN6533BF34
65" W X 33" D X 83 1/4" H

60" ADA-Compliant Cast Acrylic Barrier-Free Roll-In Shower with 3/4" Threshold

- Center drain



AN6533BF
65" W X 33" D X 84 1/2" H

60" ADA-Compliant Cast Acrylic Barrier-Free Roll-In Shower with 2" Threshold

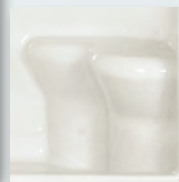
- Center drain



ANL6036BF or ANR6036BF
62"W X 36"D X 84 ½"H

58" Cast Acrylic Barrier-Free Shower with 2" Threshold

- Molded soap ledge
- Available with molded seat (opposite of valve wall) (model #ANL6036BF/S or ANR6036BF/S)
- Center drain



ANL6036 or ANR6036
62"W X 36"D X 84 ½"H

58" Cast Acrylic Shower with 6" Threshold

- Molded soap ledge
- Available with molded seat (opposite of valve wall) (model #ANL6036/S or ANR6036/S)
- Center drain



ANL5336BF or ANR5336BF
53 ¾"W X 36"D X 85 ½"H

48" Cast Acrylic Barrier-Free Shower with 2" Threshold

- Molded soap ledge
- Available with mold seat (opposite of valve wall) (model #ANR5336BF/S or ANL5336BF/S)
- Center drain



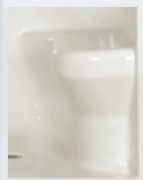
ANL5336/S or ANR5336/S
53 ¾"W X 36"D X 85 ½"H

48" Cast Acrylic Shower with 6" Threshold

- Molded soap ledge
- Molded seat (opposite of valve wall)
- Available without molded seat model #ANB5336
- Center drain

STANDARD FEATURES

- Premium Cast Acrylic • 6 Year Warranty • Slip resistant floor • Complies with NAHB, HUD UM-73A & ANSI-Z124.1.2
- Integral Dome • Return flange • Reinforced walls • Accessories are optional • Shown with recommended accessories
- Full accessory line, page 62 • Complies with ADAAG and ANSI A117.1 when properly accessorized



* Molded seats are not ADA-compliant

AN36LBF34 or AN36RBF34

41"W X 37 3/4"D X 83 1/4"H

41" ADA-Compliant Cast Acrylic Shower with 3/4" Threshold

- Available with molded seat (opposite of valve wall) (model #AN36RBF34/S or AN36LBF34/S)
- Molded seat is not ADA-compliant
- Center drain
- New improved flange



* Molded seats are not ADA-compliant

AN36LBF or AN36RBF

41"W X 37 3/4"D X 84 1/4"H

41" ADA-Compliant Cast Acrylic Shower with 2" Threshold

- Available with molded seat (opposite of valve wall) (model #AN36RBF/S or AN36LBF/S)
- Molded seat is not ADA-compliant
- Center drain
- New improved flange



AN36L or AN36R

41"W X 37 3/4"D X 86 1/4"H

41" Cast Acrylic Shower with 4" Threshold

- Available with molded seat (opposite of valve wall) (model #AN36R/S or AN36L/S)
- Center drain
- New improved flange



Clarion's New Standard Seat

Available as White Powder-Coated or Stainless Steel

- ADA-compliant
- Solid four legged bariatric style folding seat frame
- Stainless steel or special order white powder-coated frame
- Enlarged rectangle water-resistant seat pad
- Improved weight distribution/support
- Adjustable leg height
- Supports up to 400 lbs
- Available as 22", 28" or 33 1/2" lengths

STANDARD FEATURES

- Premium Cast Acrylic • 6 Year Warranty • Slip resistant floor • Complies with NAHB, HUD UM-73A & ANSI-Z124.1.2 • Return flange • Integral dome • Reinforced walls • Accessories are optional • Shown with recommended accessories
- Full accessory line, page 62 • Complies with ADAAG and ANSI A117.1 when properly accessorized



AND36BF34

41"W X 39 1/4"D X 78 1/2"H

41" ADA-Compliant Cast Acrylic Domeless Shower with 1" Threshold

- Center drain



AND36BF

41"W X 39 1/4"D X 79 1/2"H

41" ADA-Compliant Cast Acrylic Domeless Shower with 2" Threshold

- Center drain

Customize Your Assisted Living Shower Today



Customize your shower with accessories that offer peace of mind and everyday luxury. Popular options include a soap dish, a grab bar with a hand held shower head and our exclusive bariatric seat.

Like our bathware, all our accessories offer a proven combination of appealing design and great value.

See page 62–65 for our complete section of shower accessories.

Have a question? Call 1 (800) 576-9228 today, to talk to our friendly and knowledgeable staff.

STANDARD FEATURES

- Premium Cast Acrylic • 6 Year Warranty • Slip resistant floor • Complies with NAHB, HUD UM-73A & ANSI-Z124.1.2
- Integral Dome • Return flange • Reinforced walls • Accessories are optional • Shown with recommended accessories
- Full accessory line, page 62 • Complies with ADAAG and ANSI A117.1 when properly accessorized



AN6036TSL or AN6036TSR
62"W X 36"D X 85"H

60" Cast Acrylic Tub/Shower with 18" Apron

- Left or right hand drain



AN6034TSL or AN6034TSR
62"W X 34"D X 85"H

60" Cast Acrylic Tub/Shower with 18" Apron

- Left or right hand drain

OPTIONAL ACCESSORIES



COMPOSITE SOAP DISH

Surface mount design. Compatible with all showers and tub/showers. Available in standard white, biscuit and bone. All other colors require extended lead time.



GRAB BAR HAND HELD SHOWER

Adjustable Hand Held Shower.



FOLDING PHENOLIC TUB/SHOWER SEAT WITH HEAD REST

Only available for 6032 tub/shower series. Folds against sidewall.

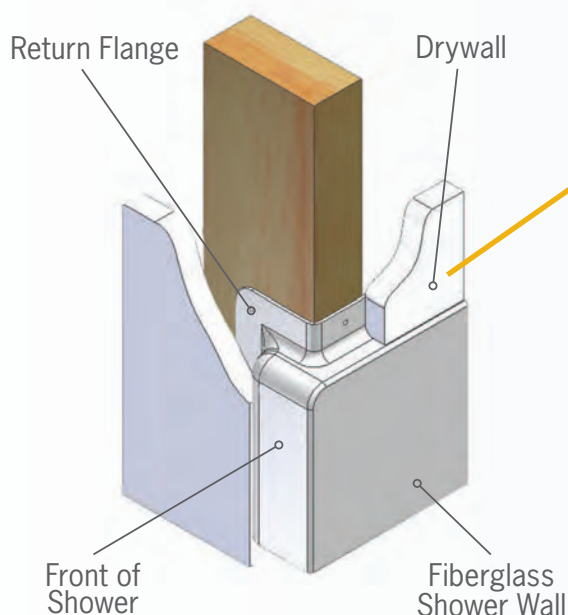


AN6032TSL or AN6032TSR
62"W X 32"D X 85"H

60" Cast Acrylic Tub-Shower with 18" Apron

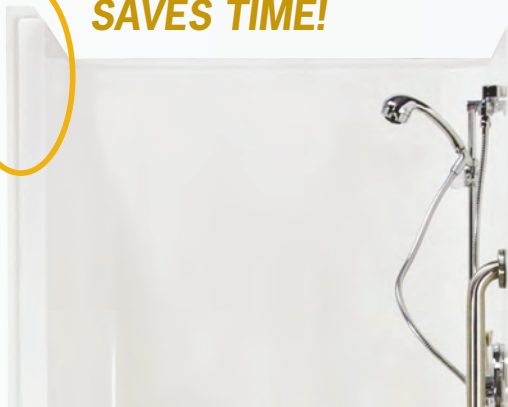
- Left or right hand drain

EASY INSTALL RETURN FLANGE



INSTALLATION EXAMPLE

SAVES TIME!



SIDE RETURN FLANGE

To meet ADA ANSI 117 transfer shower code, folding transfer shower seats must be within 3" of the shower compartment opening. Return flange units provide a finished fiberglass compartment entry solution, establishing absolute compliance for these shower units, eliminating construction errors for this issue.



MP6538LBF34 or MP6539RBF34
65"W X 38 1/2"D X 78 3/4"H

63" ADA-Barrier-Free Shower with 3/4" Threshold and Left or Right Return Flange

- Single side return flange
- Available with U-shaped grab bar (no seat) also ADA-compliant
- Center drain



MP8851BF34 or MP8852BF34
50"W X 39"D X 81 3/4"H

50" Tiled Barrier-Free Shower with Return Flange and 3/4" Threshold

- Simulated tile walls
- Molded soap ledge
- Molded foot rest
- Left or right return flange
- Center drain

STANDARD FEATURES

- AcrylX™ • Lifetime Warranty • Slip resistant floor • Complies with NAHB, HUD UM-73A & ANSI-Z124.1.2
- Reinforced walls • Integral dome • Accessories are optional • Shown with recommended accessories
- Full accessory line, page 62 • Complies with ADAAG and ANSI A117.1 when properly accessorized



MP4238LBF34 or MP4238RBF34
42 3/4"W X 39"D X 78"H

38" ADA-Compliant Barrier-Free Shower with 3/4" Threshold and Double Return Flange

- Double return flange
- Center drain



MP4038LBF34 or MP4039RBF34
40 1/4"W X 39" D X 78" H

38" ADA-Compliant Transfer Shower with Return Flange and 3/4" Threshold

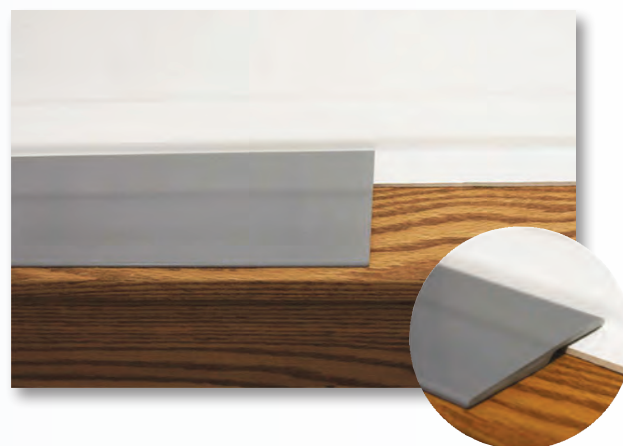
- Seat on return flange side to be ADA-compliant
- Left or right return flange
- Center drain



MP8841BF34 or MP8842BF34
40"W X 39"D X 78 1/4"H

38" ADA-Compliant Tiled Transfer Shower with Return Flange and 3/4" Threshold

- Simulated tile walls
- Left or right return flange
- Seat location must be on same side as return flange to be ADA-compliant
- Center drain



Clarion's E-Z Floor Kit

Our E-Z Floor Kit creates a seamless floor to shower transition. Perfect for barrier-free shower units.

The floor molding fits simply over our 3/4" floor attachment flange, making for a quicker installation process. Code compliant, when installed according to manufacturer guidelines.





MP6436BF34

64"W X 36"D X 78"H

64" ADA-Compliant Roll-In Shower with 3/4" Threshold

- Available with U-shaped grab bar (no seat) also ADA-compliant
- Rear center drain



MP8333BF34

63"W X 33 3/4"D X 78"H

63" ADA-Compliant Tiled Roll-In Shower with 3/4" Threshold

- Simulated tile walls
- Available with U-shaped grab bar (no seat) also ADA-compliant
- Rear center drain



MP6333BF34

63"W X 33 3/4"D X 78"H

63" ADA-Compliant Roll-In Shower with 3/4" Threshold

- Available with U-shaped grab bar (no seat) also ADA-compliant
- Center drain
- Dome available model #IN63

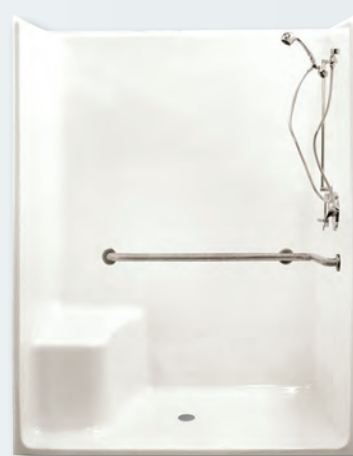


MP6333BF

63"W X 33 3/4"D X 79"H

63" ADA-Compliant Roll-In Shower with 2" Threshold

- Dome available model #IN63
- Available with U-shaped grab bar (no seat) also ADA-compliant
- Center drain



MP6333LBF/S or MP6333RBF/S

63"W X 33 3/4"D X 79"H

63" Barrier-Free Shower with 2" Threshold

- Slip resistant floor
- Molded seat
- Center drain

STANDARD FEATURES

- AcrylX™ • Lifetime Warranty • Slip resistant floor • Complies with NAHB, HUD UM-73A & ANSI-Z124.1.2
- Reinforced walls • Accessories are optional • Shown with recommended accessories • Full accessory line, page 62
- Complies with ADAAG and ANSI A117.1 when properly accessorized



MP6036BF

60"W X 36"D X 78"H

60" Barrier-Free Shower with 2" Threshold

- Dome available model #IN60C
- Available with U-shaped grab bar (no seat)
- Center drain



MP6036BF34

60"W X 36"D X 76 ¾"H

60" Barrier-Free Shower with ¾" Threshold

- Dome available model #IN60C
- Available with U-shaped grab bar (no seat)
- Center drain



MP6036L/S or MP6036R/S

60"W X 36"D X 78"H

60" Shower with 7" Threshold

- Molded seat (opposite of valve wall)
- Dome available model #IN60C
- Center drain



MP6036NS

60"W X 36"D X 78"H

60" Shower with 7" Threshold

- Dome available model #IN60C
- Center drain



MP5836L/S or MP5836R/S
60"W X 36"D X 78"H

60" Shower with 7" Threshold

- Molded soap ledges
- Molded seat (opposite of valve wall)
- Available above the floor rough (MP5836LX/S or MP5836RX/S)
- Dome available model #IN60C
- Center drain



MP6030BF
60"W X 31"D X 77 ¾"H

60" Barrier-Free Shower with 2" Threshold

- Dome available model #IN60B
- Center drain



MP5050BF
50"W X 51"D X 77 ¾"H

50" Barrier-Free Shower with 2" Threshold

- Center drain



MP4836BF34CD
48"W X 36"D X 78"H

48" Barrier-Free Shower with ¾" Threshold

- Center drain

STANDARD FEATURES

- AcrylX™ • Lifetime Warranty • Slip resistant floor • Complies with NAHB, HUD UM-73A & ANSI-Z124.1.2
- Reinforced walls • Accessories are optional • Shown with recommended accessories • Full accessory line, page 62
- Complies with ADAAG and ANSI A117.1 when properly accessorized



MP4836BF

48"W X 36"D X 78"H

48" Barrier-Free Shower with 2" Threshold

- Center drain



MP5843L/S or MP5843R/S

48"W X 36"D X 75 ½"H

48" Shower with 6" Threshold

- Molded soap ledges
- Molded seat (opposite of valve wall)
- Available above the floor rough (MP5843LX/S or MP5843RX/S)
- Available without seat (MP5843L or MP5843R)
- Dome available model #RE948
- Center drain



MP4835L/S or MP4835R/S

48"W X 36"D X 78 ¼"H

48" Shower with 4" Threshold

- Molded soap ledges
- Molded seat (opposite of valve wall)
- Center drain



MP4835SD

48"W X 35"D X 78"H

48" Shower with 4" Threshold

- Molded soap ledge
- Rear center drain



MP4832SD

48"W X 33"D X 78"H

48" Shower with 7" Threshold

- Molded soap ledges
- Molded foot rest
- Center drain



MP4236SD

42"W X 37"D X 78"H

42" Shower with 6" Threshold

- Molded soap ledges
- Molded foot rest
- Center drain



MP4236L/S or MP4236R/S

42"W X 36 ¾"D X 78"H

42" Shower with 6" Threshold

- Molded soap ledges
- Molded seat (opposite of valve wall)
- Center drain



MP4232SD

42"W X 33"D X 78"H

42" Shower with 6" Threshold

- Molded soap ledges
- Molded foot rest
- Dome available model #IN42A
- Center drain

STANDARD FEATURES

- AcrylX™ • Lifetime Warranty • Slip resistant floor • Complies with NAHB, HUD UM-73A & ANSI-Z124.1.2
- Reinforced walls • Accessories are optional • Shown with recommended accessories • Full accessory line, page 62
- Complies with ADAAG and ANSI A117.1 when properly accessorized



MP3940BF34CD
40"W X 39"D X 78"H

40" ADA-Compliant Barrier-Free Transfer Shower with 3/4" Threshold

- Dome available model #IN39
- Center drain



MP8940BF34
40"W X 39"D X 78 1/4"H

40" ADA-Compliant Tiled Barrier-Free Transfer Shower with 3/4" Threshold

- Simulated tile walls
- Rear center drain



MP3837BF34
38"W X 38"D X 78"H

38" ADA-Compliant Barrier-Free Transfer Shower with 3/4" Threshold

- Dome available model #IN38
- Available with 6" threshold & center drain (MP3837)
- Rear center drain



MP3837BF
38"W X 38"D X 78 3/4"H

38" ADA-Compliant Barrier-Free Transfer Shower with 2" Threshold

- Dome available model #IN38
- Available with 6" threshold & center drain (MP3837)
- Center drain



MP3636BF

36"W X 36 ¾"D X 77"H

36" Barrier-Free Shower with 2" Threshold

- Dome available model #IN36B
- Center drain



MP3632SD

36"W X 33"D X 78"H

36" Shower with 6" Threshold

- Molded soap ledges
- Molded foot rest
- Available above the floor rough (MP3632SDX)
- Dome available model #IN36
- Center drain



MP3636SD

36"W X 36 ¾"D X 78"H

36" Shower with 6" Threshold

- Molded soap ledges
- Molded foot rest
- Dome available model #IN36B
- Center drain



MP7920L or MP7920R

60"W X 30"D X 75 ½"H

60" ADA-compliant Tub/Shower with Flat Back Wall and 16 ½" Apron

- Available above the floor rough (MP7920LX or MP7920RX)
- Left or right hand drain

STANDARD FEATURES

- AcrylX™ • Lifetime Warranty • Slip resistant floor • Complies with NAHB, HUD UM-73A & ANSI-Z124.1.2
- Reinforced walls • Accessories are optional • Shown with recommended accessories • Full accessory line, page 62
- Complies with ADAAG and ANSI A117.1 when properly accessorized



MP7911L or MP7911R

60"W X 33"D X 77"H

60" ADA-Compliant Tub/Shower with 18" Apron

- Left or right hand drain
- Dome available model #RE962

MP7911LX or MP7911RX

60"W X 33"D X 77"H

60" ADA-Compliant Tub/Shower with 18" Apron

- Available with 15" apron (non-ADA) MP7911LX15 or RX15)
- Left or right hand drain
- Above the floor rough
- Dome available model #RE962



MP8011L or MP8011R

59 3/4"W X 33"D X 76"H

60" ADA-Compliant Tiled Tub/Shower with 16 1/2" Apron

- Simulated tile wall
- Left or right hand drain

MP8011LSDX or MP8011RSDX

59 3/4"W X 33"D X 78"H

60" ADA-Compliant Tiled Tub/Shower 18 1/2" Apron

- Simulated tile wall
- Molded soap ledge
- Above the floor rough
- Left or right hand drain



Industry Trusted

Clarion's Independence Line® for Assisted Living has been known and trusted for over 25 years in the healthcare industry. Design elements of this line include low thresholds, grab bars, hand-held shower units, pressure-balanced valves, anti-scald water valves and bariatric rated seats.

Have a question? Call 1 (800) 576-9228 today, to talk to our friendly and knowledgeable staff.



ZURN® PRESSURE BALANCING MIXING VALVE
Automatically adjusts to equalize the hot and cold water pressure.



GLIDE BAR HAND HELD SHOWER
Adjustable hand held shower.



GRAB BAR HAND HELD SHOWER
Adjustable hand held shower.

INDEPENDENCE LINE®



Industry trusted for over 25 years

Clarion Bathware's Independence Line® is built for the long run. Durable AcrylX™ products designed for a lifetime of comfort and service. From American-made Clarion Bathware.

With slip-resistant floors and reinforced walls, our tub/showers are warranted for your lifetime years. When properly accessorized, these models comply with both ADAAG and ANSI A117.1.

TRUSTED SOLUTIONS



STANDARD 4 LEGGED FOLDING SHOWER SEAT
Frame available in stainless steel and white. Seat folds up for easy access.



ZURN® PRESSURE BALANCING MIXING VALVE
Automatically adjusts to equalize the hot and cold water pressure.

STANDARD FEATURES

- AcrylX™ • Lifetime Warranty • Slip resistant floor • Complies with NAHB, HUD UM-73A & ANSI-Z124.1.2
- Reinforced walls • Accessories are optional • Shown with recommended accessories • Full accessory line, page 62
- Complies with ADAAG and ANSI A117.1 when properly accessorized



MP6436BFKD34
64"W X 36"D X 78"H

64" ADA-compliant 3-Piece Roll-In Shower with 3/4" Threshold

- Available with E-Z Pin System (MPZ6436BFKD34)
- Available with U-shaped grab bar (no seat)
- Rear center drain



MP6036BFKD
60"W X 36"D X 78"H

60" 3-Piece Barrier-Free Shower with 2" Threshold

- Available with E-Z Pin System (MPZ6036BFKD)
- Available with U-shaped grab bar
- Center drain
- Dome available model #IN60C



MP6032LBF or MP6032RBF
59 3/4"W X 33"D X 77 3/4"H

60" 3-Piece Barrier-Free Shower with 2" Threshold

- Molded soap ledges
- Available with E-Z Pin System (MPZ6032LBF or MPZ6032RBF)
- Left or right hand drain



MP6032LSDX or MP6032RSDX
59 3/4"W X 33"D X 80 3/4"H

60" 3-Piece Shower with 7" Threshold

- Molded soap ledges
- Available with E-Z Pin System (MPZ6032LSDX or MPZ6032RSDX)
- Above the floor rough
- Left or right hand drain



MP6032LX/S or MP6032RX/S

59 ¾" W X 33" D X 80 ¾" H

60" 3-Piece Shower with 7" Threshold

- Molded soap ledges
- Molded seat (opposite of valve wall)
- Available with E-Z Pin System (MPZ6032LX/S or MPZ6032RX/S)
- Above the floor rough
- Left or right hand drain



MP4836BFKD34

48" W X 36" D X 78" H

48" 3-Piece Barrier-Free Shower with ¾" Threshold

- Available with E-Z Pin (MPZ4836BFKD34)
- Rear center drain



MP9648

48" W X 36" D X 77" H

48" 3-Piece Shower with 6" Threshold and Molded Seats

- Slip resistant floor
- Molded soap ledges
- Molded seats
- Dome available model #RE948
- Available with above the floor rough
- Available with E-Z Pin System (MPZ6843L/S or MPZ6843R/S)
- Center drain



MP6843L/S or MP6843R/S

48" W X 36" D X 76 ½" H

48" 2-Piece Shower with 6" Threshold and Molded Seat

- Molded soap ledges
- Molded seat (opposite of valve wall)
- Available with above the floor rough
- Available with E-Z Pin System (MPZ6843L/S or MPZ6843R/S)
- Dome available model #RE948
- Center drain



MP4450BFKD

44" W X 51" D X 77 ½" H

44" 3-Piece Barrier-Free Shower with 2" Threshold

- Rear center drain



MP3940LKD34CD or MP3940RKD34CD

40" W X 39" D X 78" H

40" ADA-Compliant 3-Piece Barrier-Free Transfer Shower with ¾" Threshold

- Dome available model #IN39
- Available with E-Z Pin System (MPZ3940KD34CD)
- Center drain

STANDARD FEATURES

- AcrylX™ • Lifetime Warranty • Slip resistant floor • Complies with NAHB, HUD UM-73A & ANSI-Z124.1.2
- Reinforced walls • Accessories are optional • Shown with recommended accessories • Full accessory line, page 62
- Complies with ADAAG and ANSI A117.1 when properly accessorized



4MT11L or 4MT11R
60"W X 33"D X 75"H

60" 4-Piece ADA-Tub/Shower with Flat Back Wall and 18" Apron

- E-Z Pin System
- Molded soap ledges
- Dome available
- Left or right hand drain



4MT10LT or 4MT10RT
60"W X 33"D X 75"H

60" 4-Piece Tub/Shower 18" Apron

- E-Z Pin System
- Molded soap ledges
- Acrylic towel bar
- Dome available 4D1
- Left or right hand drain



MP6032L or MP6032R
59 3/4"W X 33"D X 78 1/4"H

60" 3-Piece Tub/Shower with 18" Apron

- Molded soap ledges
- Available above the floor rough (RE6032LX or RX)
- Available with E-Z Pin System (MPZ6032L or MPZ6032R)
- Available with access panel for whirlpool motor only (MP6032LA or MP6032RA)
- Left or right hand drain

NO NUTS OR BOLTS NEEDED!



*See page 5 for more information.



Remodeling made easy, with our patented E-Z Pin System

- Step 1** Frame a square and plumb pocket.
Step 2 Set, level, and secure base.
Step 3 Apply sealant. Install back wall.
Step 4 Apply sealant. Install left and right wall section.



Step 1



Step 2



Step 3



Step 4

**MAKE YOUR BATHROOM
MORE ACCESSIBLE**

CONVERTIBLE SHOWER

Clarion's Patented Convertible Shower

CONVERT A SHOWER UNIT TO A TUB/SHOWER IN 4 E-Z STEPS

- Step 1** Remove shower drain cover.
Step 2 Insert tub following installation instructions.
Step 3 Insert nylon E-Z detachment cord and foam filler strips.
Step 4 Finish with white caulking around all edges.

**Custom trim tool is included to blend silicone application for a professional finish.*



PATENTED

MP6035SD
60"W X 35"D X 78"H

60" Convertible Shower with 4" Threshold

- Molded soap ledges
- Accepts model #MP6035T tub insert
- Rear center drain



PATENTED

MP6035T
56 3/8"W X 32"D X 15"H

*Tub insert for MP6035SD
 Convertible Shower with 15" Apron*

- Rear center drain



PATENTED

**Convertible Shower
 with Tub Insert**

**"TUB INSERT CAN BE
 REMOVED AND
 RE-INSTALLED EASILY"**

OPTIONAL ACCESSORIES ON PAGE 62-65



**ZURN® PRESSURE
 BALANCING
 MIXING VALVE**
 Automatically adjusts to
 equalize the hot and cold
 water pressure.



**PREMIUM WEIGHTED
 CURTAIN**
 Heavy duty, weighted, vinyl
 curtain. 40% thicker and
 mildew-resistant. Stainless
 steel hooks available.
Sizes: 48" x 72"
 72" x 72"



**GLIDE BAR
 HAND HELD
 SHOWER**
 Adjustable hand held shower.



**GRAB BAR
 HAND HELD
 SHOWER**
 Adjustable hand held shower.

STANDARD FEATURES

- AcrylX™ • Lifetime Warranty • Slip resistant floor • Complies with NAHB, HUD UM-73A & ANSI-Z124.1.2
- Reinforced walls • Accessories are optional • Shown with recommended accessories • Full accessory line, page 62
- Complies with ADAAG and ANSI A117.1 when properly accessorized



MP6635BFSD34
66"W X 35"D X 78"H

66" Convertible Shower with ¾" Threshold

- Accepts MP6635TX34 tub insert
- Molded soap ledges
- Rear center drain



MP6635TX34
62 ½"W X 32"D X 17 ½"H

Tub insert for 6635BFSD34 Convertible Shower with 17 ½" Apron

- Above the floor rough
- Rear center drain



MP6043SD
60"W X 43"D X 80 ⅝"H

60" Convertible Shower with 4" Threshold

- Molded soap ledges
- Accepts model #MP6043T tub insert
- Rear center drain



MP6043T
56 ½"W X 40"D X 18"H

Tub Insert for MP6043SD Convertible Shower with 18" Apron

- Rear center drain

STANDARD FEATURES

- AcrylX™ • Lifetime Warranty • Slip resistant floor • Complies with NAHB, HUD UM-73A & ANSI-Z124.1.2
- Accessories are optional • Full accessory line, page 62

WALK-IN TUB

Enjoy your bath again!

Clarion's walk-in tub makes bathing more comfortable, easy and safe.

HYDROTHERAPY TUBS



WT5130LSH or WT5130RSH

50 3/4" X 29 1/2" WALK-IN

DIMENSIONS: 50 3/4"W X 29 1/2"D X 37 3/4"H

- Easy entry
- Heated seat
- Left or right hand drain



WT5130LH or WT5130RH

50 3/4" X 29 1/2" WALK-IN

DIMENSIONS: 50 3/4"W X 29 1/2"D X 37 3/4"H

- Easy entry
- Heated seat
- Hydrotherapy air jet system
- Left or right hand drain

WALK-IN TUBS



Clarion Bathware's Walk-In Tubs have a low, safe step and E-Z to use door which provide a safe, independent and soothing bathing experience. Twice the depth of normal tubs, they have a comfortable contoured seat and a slip resistant floor. Therapeutic jetted tubs are available.

All accessories are pre-plumbed with some assembly required upon installation.

OPTIONAL STANDARD ACCESSORIES

- Hand held shower
- Heated seat
- Faucet
- Diverter valve
- Cable operated tub drain
- Full accessory line, page 62

STRUCTURE REINFORCEMENT*

WE BUILD IT YOUR WAY!

RE

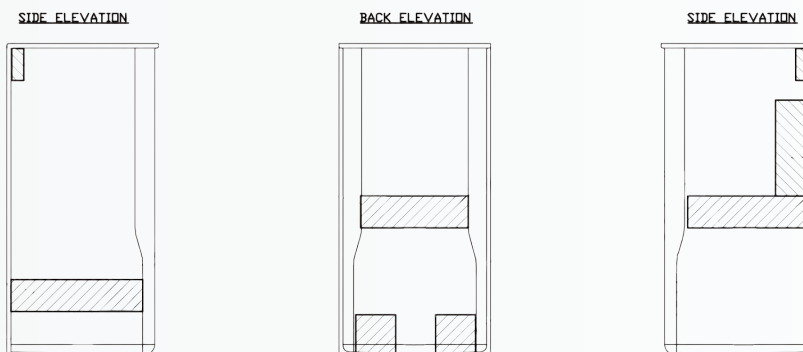
Light structural reinforcement for residential application.

Example model number: **RE3837**

MS

Minimal structure reinforcement for grab bar placement and seat for ADA accessibility.

Example model number: **MS3837**

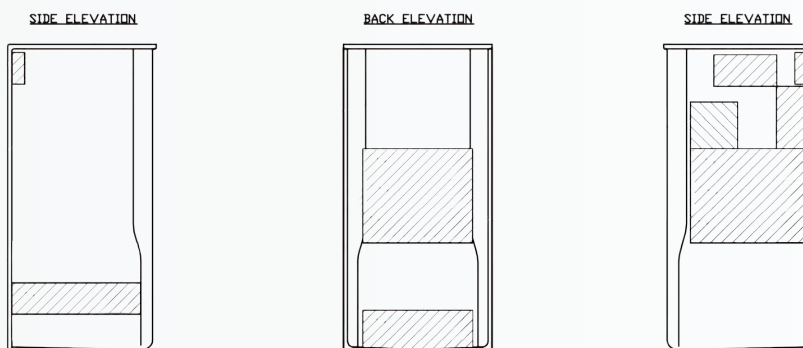


← **Standard MS Core Structural Reinforcement Layout**
(Left handed version shown)

MP

Structure for standard accessory package locations with additional reinforcements for ADA-compliant units.

Example model number: **MP3837**

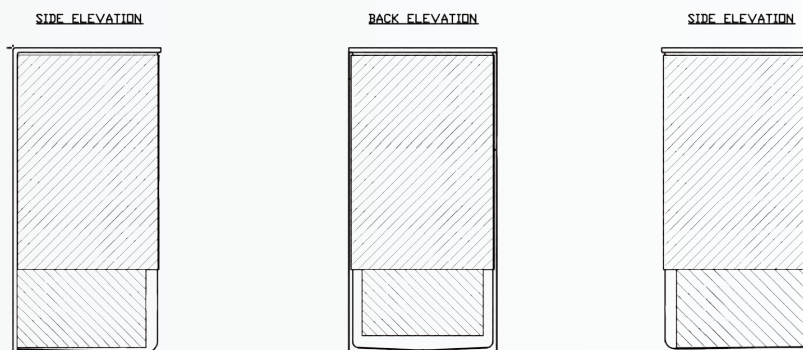


← **Standard MP Core Structural Reinforcement Layout**
(Left hand version shown)

IN

Full wall reinforcement for all ADA customer specifications.

Example model number: **IN3837**



← **Standard IN Core Structural Reinforcement Layout**
(Non-handed version shown)

CU

We will build it to meet your needs! Custom placement on structural reinforcement per customer request.

CORE STRUCTURE MATERIALS

- O.S.B
- Corrugated cardboard
- Balsawood
- Plastic honeycomb core
(Engineered lightweight waterproof product)

* Clarion's models can meet NAHB, HUD UM-73A & ANSI-Z124.1.2 code compliance, when properly accessorized & installed. Code compliance is model dependent. Please contact a Clarion Bathware Distributor near you using Clarion's Distributor Locator on our website or call 1 (800) 576-9228 for more information on code compliance.

CLARION'S COLOR OPTIONS

STANDARD PREMIUM CAST ACRYLIC AND ACRYLX™ COLORS



White

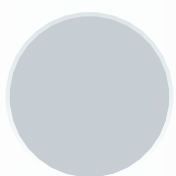


Biscuit



Bone

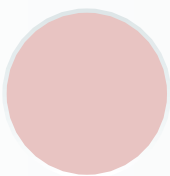
PREMIUM ACRYLX™ COLORS



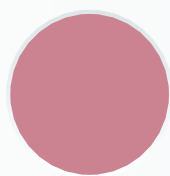
Platinum Gray



Innocent Blush



Cameo Rose



Dusty Rose



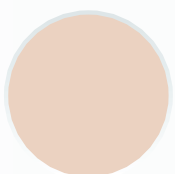
Dresden Blue



Heron Blue



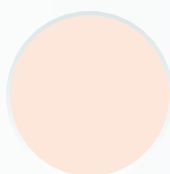
Desert Bloom



Fawn Beige



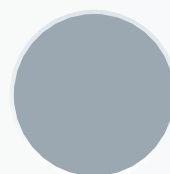
Peach Bisque



Peach Blossom



Tender Gray



Sterling Silver



Skylight Blue



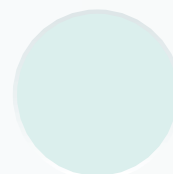
Zinfandel



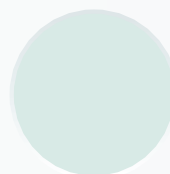
Shell



Island Sea



Seafoam Green



Daydream Blue

**Please note that the colors shown above are an approximation. Actual colors may vary slightly from what is displayed.*

CUSTOM ACRYLX™ COLORS

Clarion Bathware can work with you to create any custom color. Clarion takes great pride in the ability to match colors. Our friendly and knowledgeable sales staff will happily assist you in the creation of your perfect color.

**Please note that custom colors may require additional lead times.*

CARE INSTRUCTIONS

Put that scrub brush away. This is bathware made for real life – as tough as it is beautiful and so easy to maintain. That's the luxury of Clarion Bathware.

Our hard, non-porous surfaces are colorfast, durable and resistant to mildew. That means they'll wipe to a shine without scrubbing.



BASIC CARE INSTRUCTIONS

- ✓ **Wipe after each use.** It is common for a tub/shower to build-up residue due to repeated exposure to various soaps, shampoos, conditioners, body washes, oils as well as minerals in your water. Reduce daily build-up by wiping away excess water on the tub and shower walls with a clean soft cloth or squeegee after each use. This quick and E-Z step will prolong the unit's natural luster between cleanings and shorten the actual clean time.
- ✓ **Clean regularly.** Clean your tub/shower regularly with a non-abrasive spray or cream-based cleansing agent and a sponge or soft cloth. Never use abrasive pads or brushes, for they can scratch and dull the surface your unit, as well as shorten the life of it.
- ✓ **Polish regularly.** Eliminate fine scratches by polishing your tub/shower walls with car wax and a soft cloth. Avoid waxing the unit's floor for safety reasons. The wax will make surfaces extra slippery and therefore unsafe to step or walk on.
- ✓ **Repair nicks or damaged surfaces asap.** Call our customer service department for guidance on how to make basic repairs.

For further care instruction, please call 1 (800) 576-9228. A friendly representative will happily assist you to answer all care questions.

OUR PROMISE

Prepared for a long and satisfying relationship? Because we're not going anywhere. After more than 40 years in business, Clarion Bathware is American-made quality you can trust.

Every Clarion product is backed by the longest warranty in the industry. And if you do have a question or concern, our American-based staff is ready to provide you with the highest level of customer service.

We don't think you would expect anything less from the everyday luxury of Clarion Bathware.



