

#16 GRN/YEL GROUND LEAD TO BE 12 BETWEEN CENTERS. TERMINALS TO FIT #10 SCREW.

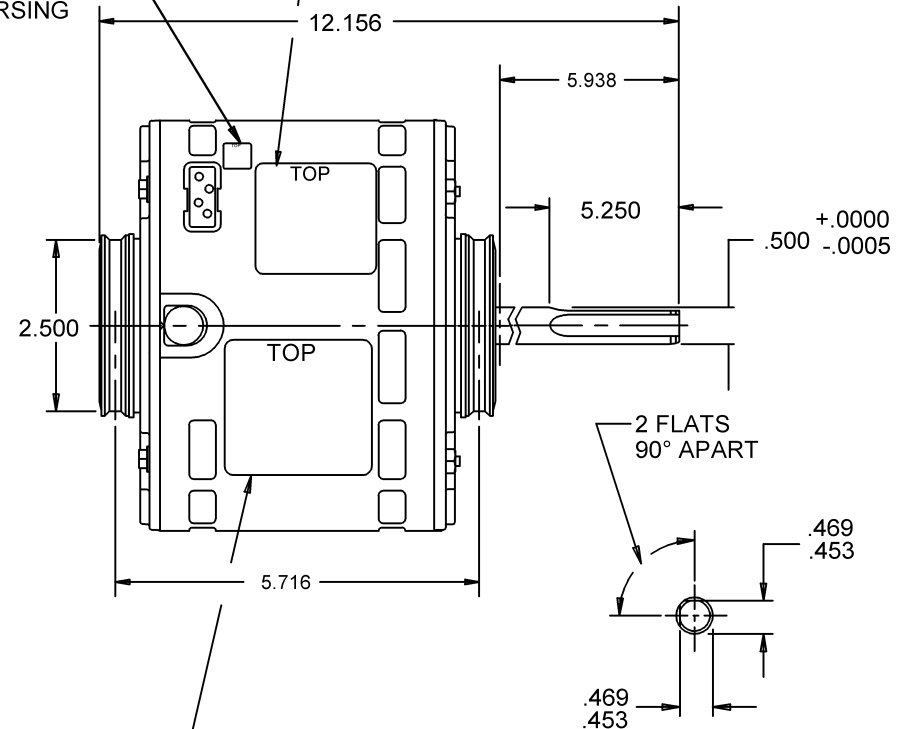
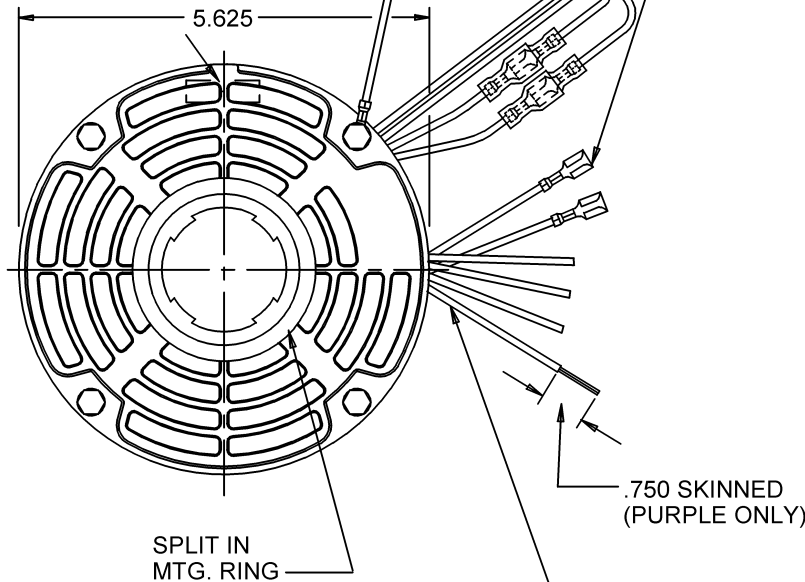
REVERSING LEADS:  
2 YELLOW  
2 ORANGE

(2).250 STRAIGHT TYPE Q.C. TERMS.  
WITH INSUL. GRIP ON BROWN LEADS.

AUTOMATIC  
THERMAL  
PROTECTOR

WARNING LABEL  
TO BE ADJACENT  
TO REVERSING  
LEADS

NAMEPLATE



6 LEADS, TO EXTEND BEYOND MOTOR.  
PUR(C)=24.000, BLK(1)=23.250,  
BLU(2)=23.250, RED(3)=23.250,  
BROWN=24.000, BRN/WHT=24.000

WARNING LABEL

6.0 MFD @ 370V CAPACITOR REQ'D

NIDEC MOTOR CORPORATION 19-Nov-12

MODEL		REF	CUSTOMER	HP	VOLTS	AMPS	HZ	RPM	ROTATION	CUSTOMER PN		
K55HXRWB-9538		-	STANDARD	1/2	277	3.4	60	1075/3 SPD	CCW LEAD END REV	602		
SHEET NUMBER 1 OF 1	REV E	REVISION RECORD FOR: C6403-02			INFORMATION DISCLOSED ON THIS DOCUMENT IS CONSIDERED PROPRIETARY AND SHALL NOT BE REPRODUCED OR DISCLOSED WITHOUT WRITTEN CONSENT OF NIDEC MOTOR CORPORATION				NIDEC MOTOR CORPORATION			
		UPDATED "ENGINEER APPROVED" TO B. GAITAN										
REVISION DATE												
16-NOV-12						ALL DIMENSIONS ARE FOR REFERENCE ONLY UNLESS TOLERANCE IS GIVEN						
ISSUED BY B. ANDRADE		REVIEWED BY M. LARGENT		ENGINEER APPROVED B. GAITAN		REV E		TITLE ASSEMBLED VIEW		CODE V01	ITEM NO. 754967	SIZE A