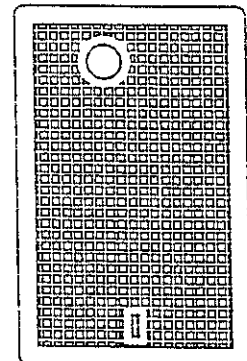
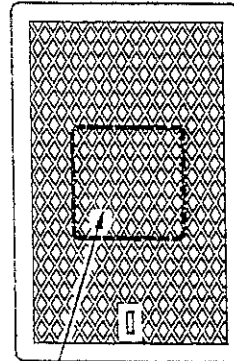


CAST IRON

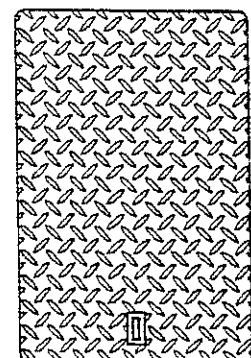
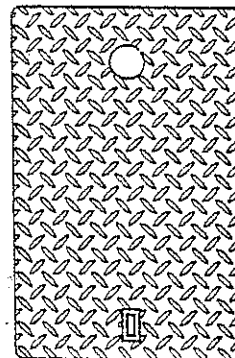
POLYMER WITH TOUCH READ & I-TRON SLOT



REMOVABLE INSPECTION PLATE ON CAST IRON COVERS 3 & 4

DIAMOND PLATE STEEL WITH TOUCH READ

DIAMOND PLATE STEEL



BOX NO.	MAG SPEC 320 BOX DIMENSIONS			MATCHING COVERS				COVER DIMENSIONS	
	A	B	C	CAST IRON	POLYMER	DIAMOND WITH TOUCH READ & I-TRON SLOT	DIAMOND PLATE	D	E
1	19"	12"	12"	NO. 1	NO. 1	NO. 1	NO. 1	15-7/8"	9"
2	25-3/4"	18"	12"	NO. 2	NO. 2	NO. 2	NO. 2	21-3/4"	14-1/8"
3	29-1/2"	18-1/2"	12"	NO. 3	N/A	NO. 3	NO. 3	26-1/4"	15-1/4"
4	33-1/2"	22-3/4"	12"	NO. 4	N/A	NO. 4	NO. 4	30"	19-1/2"

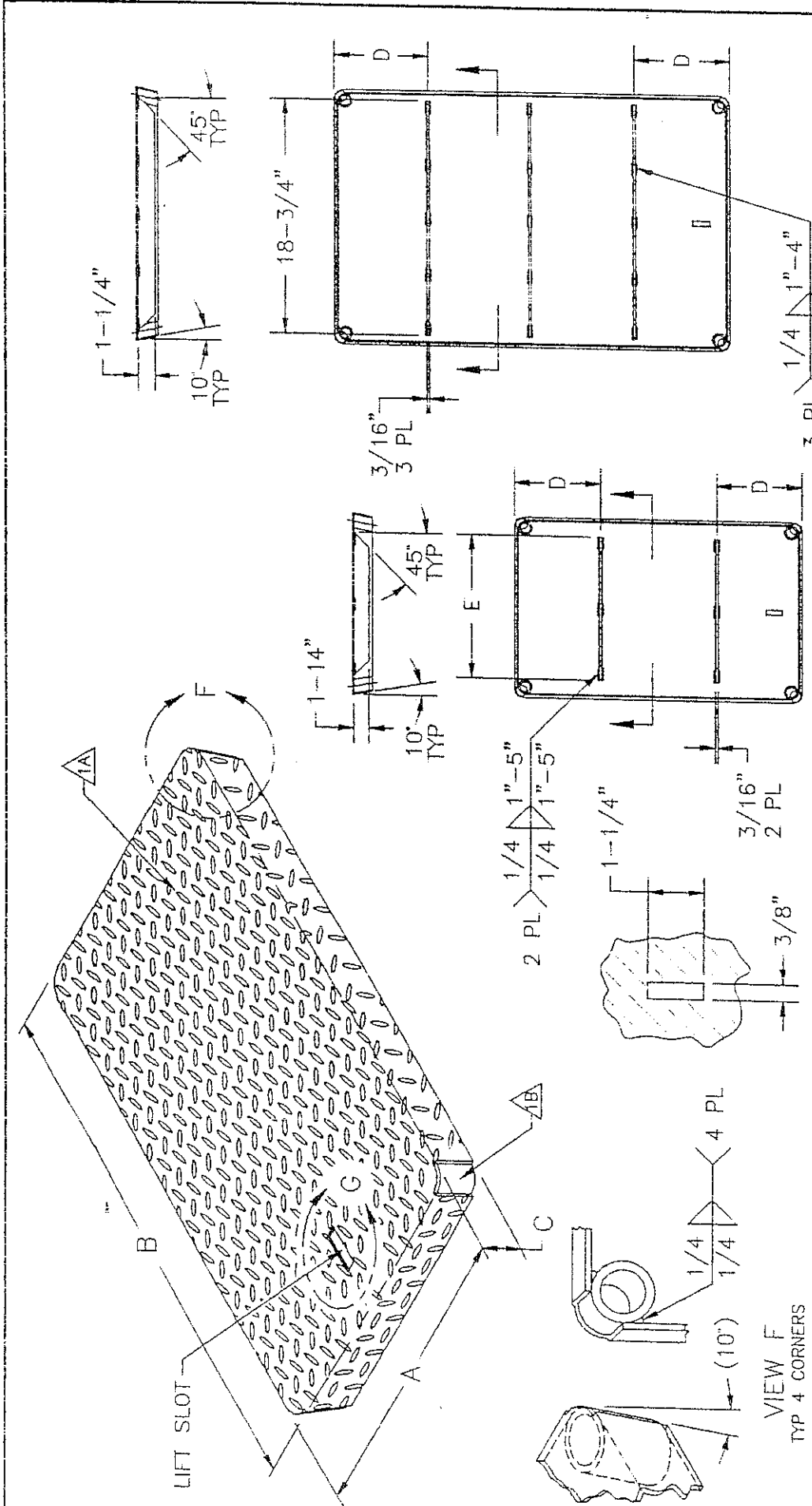
NOTES:
HIGH DENSITY CONCRETE BOX
CONFORMING TO MAG SPEC. 320

Contractors/Engineers Supply, Inc.
Proudly Serving Our Customers Since 1976

5435 West Mohave Phone (802) 272-1369
Phoenix, Arizona 85043 Fax (802) 233-2818

MAG SPEC 320
CONCRETE METER BOX &
COVER ASSEMBLY

DETAIL NO.



VIEW F
TYP 4 CORNERS

VIEW G

DETAIL 1
COVERS 2 & 3

DETAIL 2
COVER 4

- NOTES: UNLESS OTHERWISE SPECIFIED
- MATERIAL: PER MAG SPEC 770.1.
A DIAMOND PLATE STEEL.
B. $\phi 3/4$ SCHEDULE 40 HEAVY WALL BLACK IRON PIPE
 - FINISH: BLACK HOT DIPPED COAL TAR BITUMINOUS COATING AFTER ASSEMBLY
 - STRUCTURAL BRACING NOT USED ON COVERS T1 & 1.

COVER SPECIFICATIONS

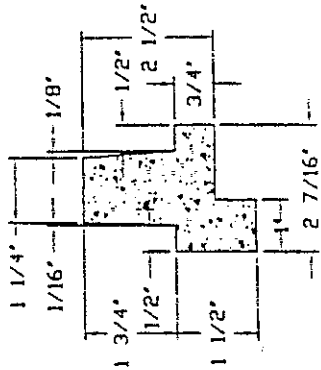
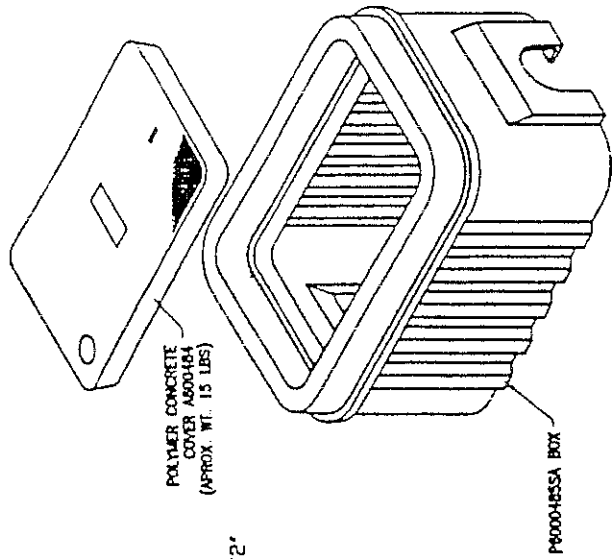
COVER NO	DETAIL NO	A	B	C	D	E	MATERIAL	WEIGHT
T1	NOT SHOWN	8-7/8"	14-3/4"	1-3/16"	N/A	N/A	14 GAGE	4-1/4 lbs
1	NOT SHOWN	9"	15-7/8"	1-3/8"	N/A	N/A	14 GAGE	5-14 lbs
2	DETAIL 1	14-1/8"	21-3/4"	1-1/2"	6-1/2"	13-1/8"	12 GAGE	12-3/4 lbs
3	DETAIL 1	15-1/4"	26-1/4"	1-1/2"	8-1/4"	14-1/4"	12 GAGE	19-1/4 lbs
4	DETAIL 2	19-1/2"	30"	1-1/2"	7-1/8"	N/A	11 GAGE	33 lbs

Contractors/Engineers Supply, Inc
Proudly Serving Our Customers Since 1976

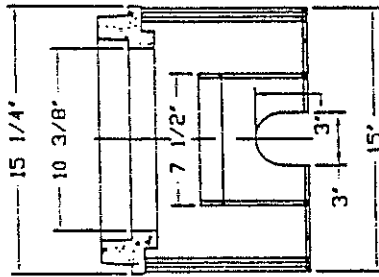
5435 West Mohave Phone (602) 272-1369
Phoenix, Arizona 85043 Fax (602) 233-2818

STEEL WATER METER BOX COVER WITH WELDED CORNERS

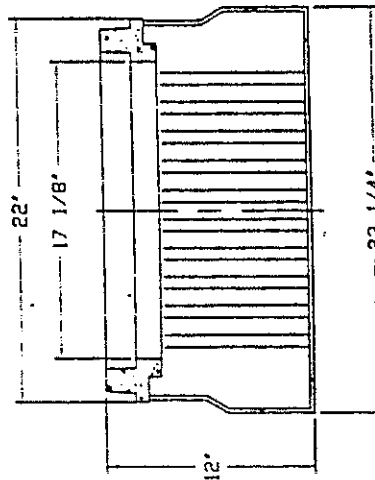
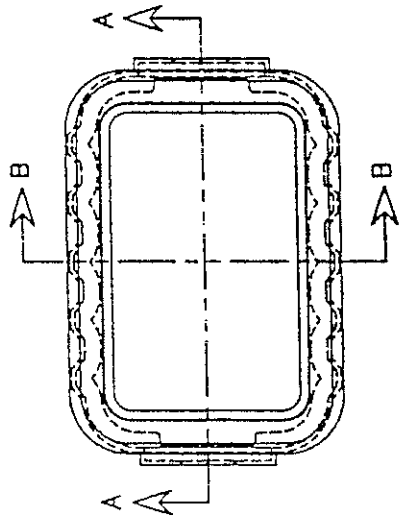
DETAIL NO CES315



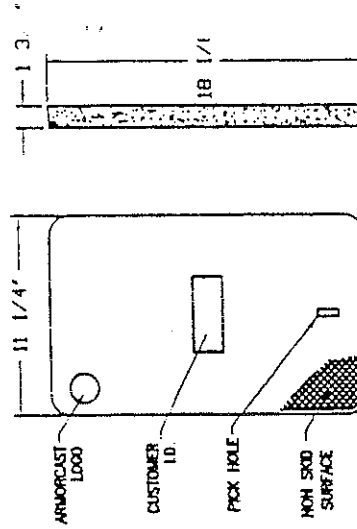
DETAIL



SECTION B-B



SECTION A-A



ARMORCAST PROJECTS COMPANY 12250 N. 19th St., Suite 100 Phoenix, AZ 85022-3900 (602) 998-7900		12" X 20" X 12" METER BOX ASSEMBLY P6000485A	
DATE	BY	REV	DESCRIPTION
6/89	HOME		
8/99	WSP		

P6000485A

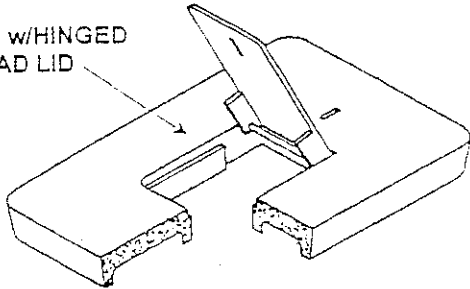
A6000485



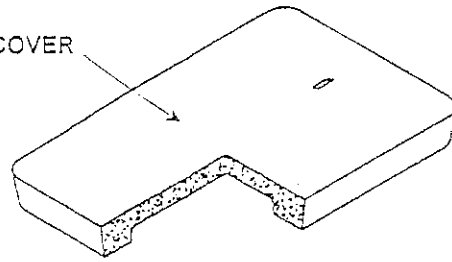
* Gilbert Complete
* Tucson Box

WATER METER BOXES

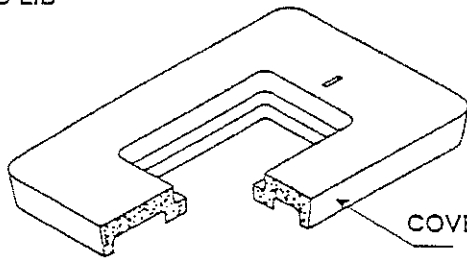
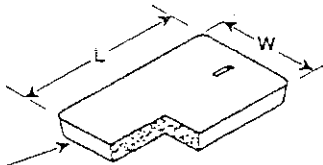
COVER w/HINGED READ LID



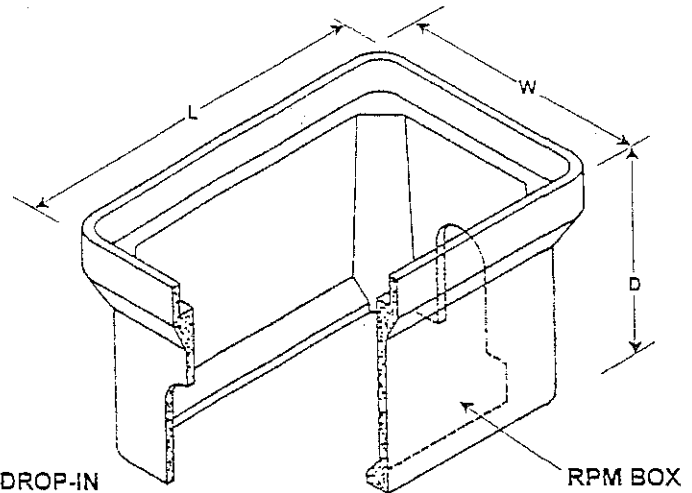
1 PIECE COVER



DROP-IN READ LID



COVER FOR DROP-IN READ LID



RPM BOX

FEATURES:

Polymer Concrete "RPM" Body and Non-Skid Cover. Lighter & Stronger than Conventional Concrete. Non-skid Covers are Designed to Retrofit with Most Concrete Boxes. Hinged Read Lids Furnished in Polymer Concrete. Pedestrian Load Rated as Listed, Contact Factory for "20K" Incidental Traffic Load Rated Assemblies.

NOMINAL DIMENSIONS Width x Length x Depth	BOX Part No.	CONCRETE Reference	COVER 1-piece	COVER WITH H/Read Lid	COVER FOR Drop-In	DROP-IN-LID Part No.	DIMENSIONS Width x Length
9" x 14" x 12"	—	3	A6000482	—	—	—	—
10" x 15" x 12"	—	3-½, 36	A6001922	A6001922R	A6001922DQ	A6000487	5" x 7"
10" x 20" x 12"	A6000486	4, 33	A6000483	A6000483R	A6000483DQ	A6000487	5" x 7"
12" x 18" x 12"	A6001425	—	A6001426	A6001426R	—	—	5" x 7"
12" x 20" x 12"	A6000485	4-½, 37	A6000484	A6000484R	A6000484DQ	A6000487	5" x 7"
13" x 24" x 12"	A6001946PC12	5-¼, 38	A6001866	A6001866R	A6001866DQ	A6000487	5" x 7"
17" x 28" x 12"	A6001419	5-½, 65	A6001420	A6001420R	A6001420DW	A6000487D	7" x 13"
17" x 30" x 12"	A6001640PC12	6, 66	A6001643	A6001643R	A6001643DZ	A6000482	9" x 14"
24" x 36" x 12"	A6001974PC12	67	A6001975	—	A6001975DZ	A6000482	9" x 14"
30" x 48" x 12"	A6001430PC12	68	A6001470PR	—	A6001470PR-DZ	A6000482	9" x 14"



ARMORCAST PRODUCTS COMPANY
 13230 Saticoy Street, North Hollywood, California 91605
 Telephone: (818) 982-3600 / Fax: (818) 982-7742
 Visit our web site: www.armorcastprod.com