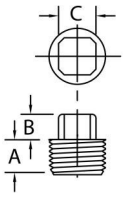
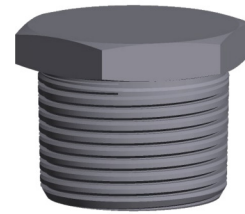


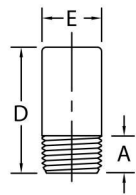
Forged Steel Threaded Plugs

ASTM A105, ASME B16.11, ASME B1.20.1



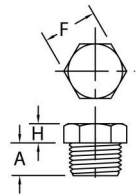
Square Head Plugs

Pipe Size	1/8	1/4	3/8	1/2	3/4	1	1-1/4	1-1/2	2	2-1/2	3	4
A	0.395	0.455	0.515	0.580	0.640	0.770	0.830	0.830	0.910	1.062	1.188	1.250
B	0.250	0.250	0.310	0.380	0.440	0.500	0.560	0.620	0.690	0.750	0.875	1.000
C	0.295	0.405	0.465	0.575	0.645	0.835	0.965	1.145	1.335	1.500	1.875	2.500
Wt. Ea.	0.02	0.03	0.06	0.13	0.19	0.31	0.56	0.88	1.50	2.25	2.87	7.18



Round Head Plugs

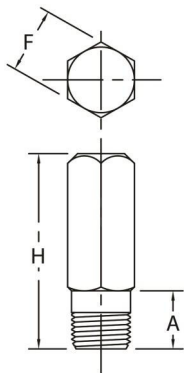
Pipe Size	1/8	1/4	3/8	1/2	3/4	1	1-1/4	1-1/2	2	2-1/2	3	4
A	0.380	0.562	0.562	0.812	0.812	0.937	0.937	1.000	1.062	1.500	1.562	1.625
D	1.380	1.620	1.620	1.750	1.750	2.000	2.000	2.000	2.500	2.750	2.750	3.000
E	0.437	0.562	0.750	0.875	1.062	1.312	1.750	2.000	2.375	3.000	3.625	4.625
Wt. Ea.	0.06	0.11	0.20	0.30	0.44	0.77	1.27	1.78	3.48	5.50	8.04	14.28



Hex Head Plugs

Pipe Size	1/8	1/4	3/8	1/2	3/4	1	1-1/4	1-1/2	2	*2-1/2	*3	*4
A	0.437	0.593	0.593	0.781	0.781	0.968	1.000	1.000	1.062	1.125	1.312	1.500
F	0.437	0.625	0.687	0.875	1.062	1.375	1.750	2.000	2.500	3.000	3.625	4.625
H	0.250	0.250	0.310	0.310	0.380	0.380	0.560	0.620	0.690	0.500	0.562	0.687
Wt. Ea.	0.06	0.06	0.07	0.19	0.30	0.59	1.10	1.54	2.54	2.34	6.24	11.00

* 2 1/2, 3 and 4 are not to ASME B16.11



Hex Head Refinery

Pipe Size	1/4	3/8	1/2	3/4	1	1-1/4	1-1/2	2
A	0.810	0.810	1.250	1.375	1.562	1.625	1.625	1.750
F	0.625	0.875	0.875	1.062	1.375	1.750	2.000	2.500
H	3.000	3.000	3.000	3.000	3.000	3.000	3.000	3.000
Wt. Ea.	0.26	0.39	0.52	0.83	1.23	2.49	2.74	4.20