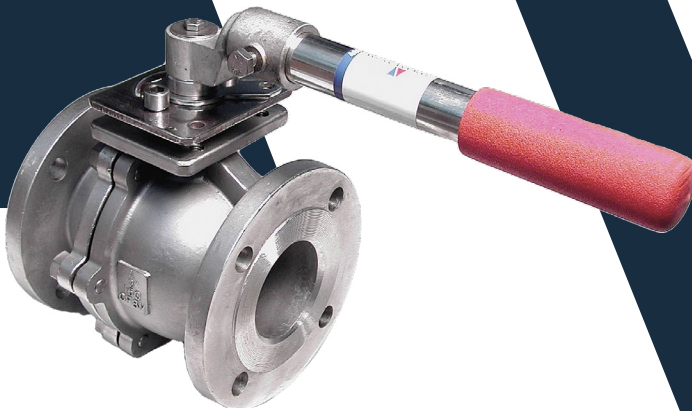




4000

SERIES





SERIES BALL VALVES

STRENGTH • LUBRICITY • BONDING

REMOVABLE HANDLE/
A53 SCHEDULE 40 PIPE

BLOWOUT-PROOF
STAINLESS STEEL STEM

LOCKABLE IN
FULL OPEN OR
CLOSED POSITIONS

ISO MOUNTING PAD
FOR EASY AUTOMATION

SAME FACE-TO-
FACE FLANGED
DIMENSIONS AS ANY
125/150 CLASS GATE
OR BALL VALVE

EPOXY COATING

REINFORCED
PTFE SEATS
WITH LOW
PRESSURE
BACK SEAL

FULL PORT
THROUGH 6 IN.

LEAD-FREE
FOR POTABLE
WATER

- CORROSION-RESISTANT
- INHIBITS SCALE BUILDUP
- LASTS TEN-TIMES LONGER
- EASY-TO-TURN



MODEL 4000

CAST IRON FLANGED END BALL VALVE



SPECIFICATIONS

- A126 Class B cast iron body
- PFA* fused solid ball
- Blow-out proof stainless steel stem
- Reinforced PTFE seats
- Face to face and flanged dimensions conform to ANSI Standard B16.10 which exactly match end to end dimensions of all cast iron gate valves and plug valves
- Lockable in full open or closed positions
- ISO mounting pad for easy actuation
- Adjustable Length/removable handles to fit into areas of limited space
- Full port through 6"
- Certified to meet the requirements of:
NSF/ANSI 61 and NSF/ANSI 372
MSS SP-72
ANSI B16.10
FED. SPEC. WW-V-35
AWWA C507-99 (Proof of Design)

RATINGS

- 125 psi WSP
- 200 psi WOG
- 353° F
- This cast iron ball valve has been engineered to replace any IBBM gate valve, all iron gate valve, or plug valve.

*PFA is an ingredient commonly branded as Teflon®.



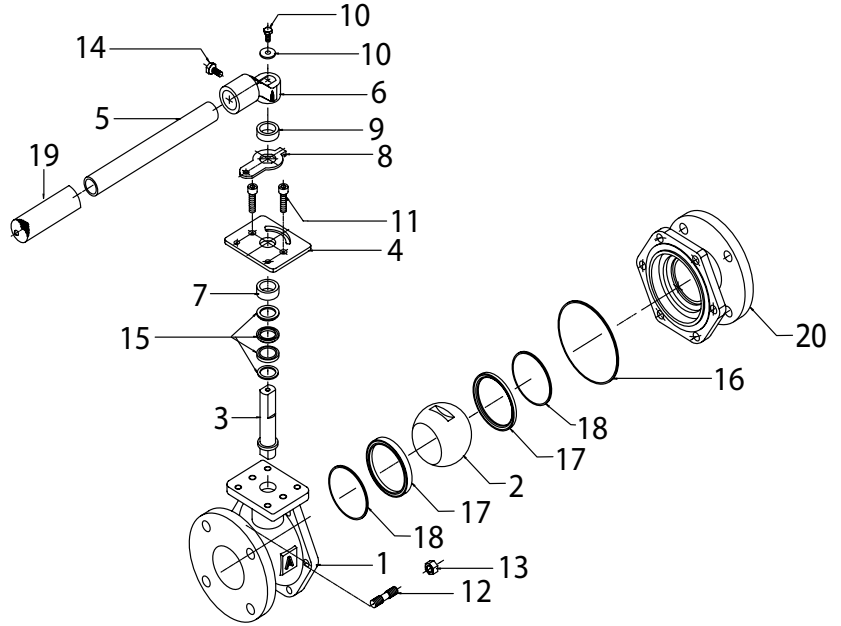
SAMPLE SPECIFICATION

Ball valves shall be of the floating-ball design providing bi-directional, tight shutoff in accordance with MSS SP-72. The valves shall be rated at 125# WSP/200# WOG. Bodies shall be of cast iron per ASTM A126 Class B, With ANSI Class 125 flat-face flanges. The interior and exterior of the body shall be powder coated to meet NSF/ANSI 61 and NSF/ANSI 372. The ball shall be PFA infused cast iron, with a stainless steel blowout-proof stem. The seats and body seals shall be PTFE. The stem seal shall be PTFE, externally adjustable chevron type. Valves shall be equipped with locking handles as standard. Valves may be equipped with 2" square operating nuts, manual gear operators, or pneumatic, electric, or hydraulic actuators. Valves shall be the 4000 Series as manufactured by American Valve, Inc. or as approved by the engineer.



MATERIAL SPECIFICATIONS

	Part	Material	ASTM
1	Body	Cast Iron	ASTM A126 Class B
2	PFA* Fused Ball	Cast Iron	ASTM A48 Class-35
3	Stem	Stainless Steel	ASTM SA 479 -10a
4	Gland Plate	Steel	ASTM A53M
5	Handle	Steel	ASTM A53M
6	Handle Bracket	Stainless Steel	ASTM A536
7	Packing Follower	Stainless Steel	ASTM SA 479 -10a
8	Stem Indicator	Steel	ASTM A53M
9	Handle Bracket Spacer	Stainless Steel	ASTM SA 479 -10a
10	Stem Stud	Steel	ASTM A193
11	Gland Stud	Steel	ASTM A53M
12	Body Stud	Steel	ASTM A53M
13	Body Nut	Steel	ASTM A53M
14	Handle Bracket Bolt	Steel	ASTM A193
15	Packing	PTFE	ASTM D3294
16	Body Gasket	PTFE	ASTM D3294
17	Seat Ring	RPTFE 15% GF	ASTM D4894
18	Back Seat O-Ring	PTFE	ASTM D3294
19	Handle Grip	Red Foam Rubber	ASTM D 749
20	Body Cap	Cast Iron	ASTM A126 Class B



DIMENSIONS

	1/2"	3/4"	1"	1 1/2"	2"	2 1/2"	3"	4"	6"	8"	10"
A Face to Face	4.25"	4.625"	5"	6.5"	7"	7.5"	8"	9"	10.5"	11.5"	13"
B Center of Port to Top	4.25"	4.25"	4.75"	6"	6.5"	7.5"	8.25"	9"	12"	12.25"	13.5"
C Flange Diameter	3.5"	3.875"	4.25"	5"	6"	7"	7.5"	9"	11"	13.5"	16"
D Center of Valve to Handle End	11.875"	11.875"	11.875"	12.25"	12.5"	14"	14"	16"	30.5"	30.5"	33.625"
E Port Diameter	0.5"	0.75"	1"	1.5"	2"	2.5"	3"	4"	6"	6"	7.875"
Bolt Holes	4	4	4	4	4	4	4	8	8	8	12
Weight lbs.	6	7	10	17	24	43	50	77	149	190	309
CV	26	50	100	260	500	750	1245	2500	5470	4150	6700
Mounting Pad				F07	F07	F10	F10	F10	F12	F12	F12

