

# DRYCONN®

## WATERPROOF CONNECTORS

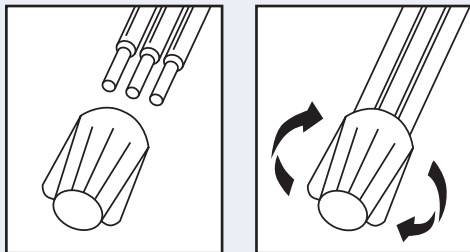
Filled Connectors for Direct Bury Use



### INSTALLATION INSTRUCTIONS

**IMPORTANT:** Turn off power before installing or removing connector. Product to be used in accordance with local and national codes.

1. Strip wires 5/8" (15.9mm).
2. Align any frayed strands or conductors.
3. Pre-twisting unnecessary. Place stripped wires together with ends of insulation even.
4. Twist connector onto wires pushing firmly until hand-tight. Do not over torque.
5. Wipe sealant in and around conductors and connector opening while tightening. Do not reuse.



### NEC Required for Outdoor Connections

Selected 600V Wire Combinations  
For use with solid and/or stranded combinations.

1-3 #10	1 #10 w/1-3 #14	1 #14 w/3-4 #18
1-4 #12	1 #10 w/1-5 #16	2 #14 w/2-4 #16
2-5 #14	1 #12 w/1-4 #14 or #16	1 #8 w/1 #12
4-6 #16	1 #12 w/2-4 #18	5 #14 w/1 #18
3 #14 w/1-2 #16, #18, #20 or #22	2 #12 w/1-2 #14, #16 or #18	1 #8 w/1-2 #16, #18, #20 or #22
3 #12 w/1 #14		

Contact factory for a complete list of wire combinations at 800.633.0232.

**KING**  
INNOVATION®

### Large Direct Bury\* Waterproof Connectors

Catalog #	Selling Unit
10600	Card of 2
10666	Bag of 10
10670	Box of 100

### PRODUCT SPECIFICATIONS & MEASUREMENTS

Max. Voltage: 600V max. building wire  
(1000V max. signs or luminaires)

Connector Size: 2" x 13/16"

Wire Type: Copper/Copper

Wire Range: Min #22/Max #8

Temperature Rating: 105°C (221°F)

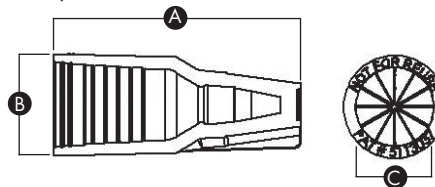
UL Designation: MDB

Measurements (Inches):

A - 2.00

B - 0.81

C - 0.62



UL Listed as a Sealed Wire Connector. For use in dry, damp, wet locations below or above grade when used in an enclosure. \*For use in direct bury applications when operating at 30 volts or less.



**MADE IN USA**

www.kinginnovation.com

(P) 800.633.0232

(F) 636.519.5410

50100-04 REV K 06/23