

Weldless Eye Nut

Fig. 290: Right-Hand Thread

Fig. 290L: Left Hand Thread



Description

Size Range
3/8" through 2 1/2"

Material
Forged steel

Finish
Plain or
Zinc Plated (Hot-Dip Galvanized optional)

Service
For use on high temperature piping installations.

Approvals
Complies with Federal Specification A-A-1192A (Type 17), WW-H-171-E (Type 17), ANSI/MSS SP-69 and MSS SP-58 (Type 17).

Ordering
Specify rod size, figure number, name and finish. If other than standard combination of eye nut number and rod size, specify eye nut number and special rod tapping size.

Features:

- Supports loads equal to the full limitation of the hanger rod.
- Provides flexible connection when used with straight thread rod.

Note: The acceptability of galvanized coatings at temperatures above 450°F is at the discretion of the end user. Larger eye nuts featuring smaller rod sizes are commonly available.

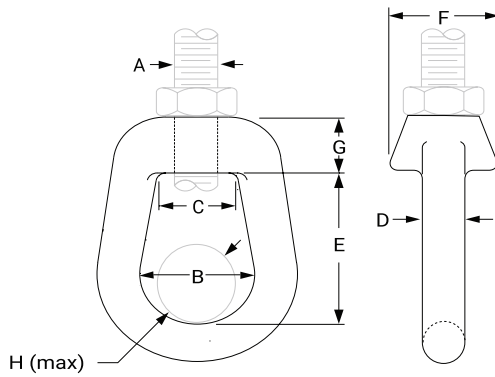


PROJECT INFORMATION	APPROVAL STAMP
Project:	Approved
Address:	Approved as noted
Contractor:	Not approved
Engineer:	Remarks:
Submittal Date:	
Notes 1:	
Notes 2:	

Weldless Eye Nut

Fig. 290: Right-Hand Thread

Fig. 290L: Left Hand Thread



Dimensions (In) • Loads (Lbs) • Weights (Lbs)

Rod Size A	Max Load		Weight	B	C	D	E	F	G	H	Eye Nut Number
	650° F	750° F									
3/8	730	572	0.28								
1/2	1,350	1,057	0.28	1 ⁵ / ₃₂	¹³ / ₁₆	¹³ / ₃₂	1 ¹⁷ / ₃₂	³¹ / ₃₂	⁵ / ₈	1	0
5/8	2,160	1,692	0.62	1 ¹ / ₂	1 ³ / ₁₆	¹ / ₂	2	1 ³ / ₈	¹¹ / ₁₆	1 ¹ / ₄	1
3/4	3,230	2,530	0.60	1 ¹ / ₂	1 ³ / ₁₆	¹ / ₂	2	1 ³ / ₈	¹¹ / ₁₆	1 ¹ / ₄	1
7/8	4,480	3,508	1.70	2	1 ¹¹ / ₁₆	³ / ₄	2 ⁵ / ₈	1 ¹⁵ / ₁₆	1	1 ³ / ₄	2
1	5,900	4,620	1.70	2	1 ¹¹ / ₁₆	³ / ₄	2 ⁵ / ₈	1 ¹⁵ / ₁₆	1	1 ³ / ₄	2
1 ¹ / ₄	9,500	7,440	3.60	2 ¹ / ₂	1 ¹³ / ₁₆	1	3 ³ / ₈	2 ³ / ₈	1 ¹ / ₄	2 ¹ / ₄	3
1 ¹ / ₂	13,800	10,807	3.50	2 ¹ / ₂	1 ¹³ / ₁₆	1	3 ³ / ₈	2 ³ / ₈	1 ¹ / ₄	2 ¹ / ₄	3
1 ³ / ₄	18,600	14,566	16.40								
2	24,600	19,265	15.90								
2 ¹ / ₄	32,300	25,295	15.40	4	4	1 ¹ / ₂	6 ¹ / ₄	4	2 ¹ / ₄	3 ³ / ₄	4
2 ¹ / ₂	39,800	31,169	14.90								



asc-es.com

Building connections that last™