

Fig. 181

Adjustable Steel Yoke Pipe Roll

Size Range: 2 1/2" through 24"

Material: Cast iron roll; carbon steel yoke, roll rod and hex nuts

Finish: Plain or Galvanized

Service: For suspension of pipe from a single rod where horizontal movement may occur because of expansion or contraction.

Maximum Temperature: 450° F at roller

Approvals: Complies with Federal Specification A-A-1192A (Type 43), WW-H-171-E (Type 44), ANSI/MSS SP-69 and MSS SP-58 (Type 43).

How to size: If the roll is to support bare pipe, select the size directly from nominal pipe size (see below). If used with pipe covering protection saddle, see page 104 for size of pipe roll to be used.

Ordering: Specify pipe roll size, figure number, name and finish. Be certain to order oversized rolls when insulation and protection saddles are required.

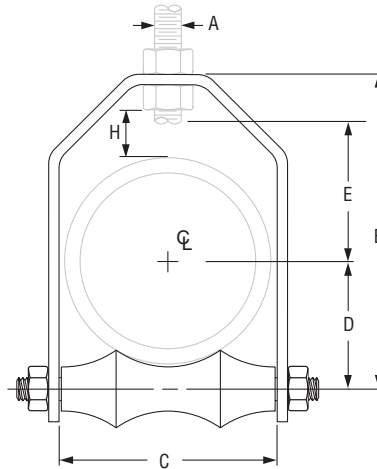


FIG. 181: LOADS (LBS) • WEIGHT (LBS) • DIMENSIONS (IN)

Pipe Size	Max O.D. of Covering	Max Load	Weight	Rod Size A	B	C	D	Rod Take Out - E	H
2 1/2	3	225	1.7	1/2	5 3/4	3 1/4	1 15/16	2 7/8	1 11/16
3	3 5/8	310	2.2		6 3/8	3 7/8	2 1/4	3 3/8	1 5/8
3 1/2	4 1/8	390	2.5		7	4 3/8	2 9/16	3 1/2	1 11/16
4	4 11/16	475	3.2	5/8	7 9/16	4 15/16	2 13/16	3 5/8	1 5/8
5	5 3/4	685	6.3		9 1/8	6	3 7/16	4 1/2	1 15/16
6	6 7/8	780	9.3	3/4	10 5/16	7 1/8	4	5	1 7/8
8	9		14.5		12 11/16	9 1/4	5 5/8	6 1/8	2
10	11	965	18.8	7/8	15 1/16	11 1/4	6 3/8	7 1/4	2 1/16
12	13		27.7		17 7/16	13 3/4	7 7/16	8 3/8	2 1/4
14	14 1/4	1,200	39.1	1	18 7/8	14 1/2	8 3/8	8 3/4	2
16	16 1/4		49.1		20 13/16	16 1/2	9 3/8	9 11/16	1 15/16
18	18 1/4	1,400	57.8	1 1/4	23 3/4	18 1/2	10 7/16	11 7/16	2 13/16
20	20 1/4	1,600	75.9		26	20 1/2	11 5/8	12 1/4	2 1/2
24	24 1/4	1,800	119.3	1 1/2	32 5/16	24 5/8	13 15/16	15 3/4	4 3/8

DI/CI ROLL SIZING	
DI/CI Pipe Size	Fig. 181 Roller Size
3	4
4	5
6	6
8	8
10	10
12	14
14	16
16	18
18	20
20	24

PROJECT INFORMATION

APPROVAL STAMP

Project:	<input type="checkbox"/> Approved
Address:	<input type="checkbox"/> Approved as noted
Contractor:	<input type="checkbox"/> Not approved
Engineer:	Remarks:
Submittal Date:	
Notes 1:	
Notes 2:	