

Fig. 206 (Formerly Afcon Fig. 556/560/565)

Steel Side Beam Bracket

Size Range: 3/8" through 5/8"

Material: Carbon steel

Finish: Plain or Zinc Plated (Hot-Dip Galvanized optional)

Service: Clip can be fastened to side of joist or wall to support hanger rod.

Approvals: Complies with Federal Specification A-A-1192A (Type 34), WW-H-171-E (Type 35) and ANSI/MSS SP-69 and MSS SP-58 (Type 34). UL Listed and FM Approved (steel beam only).

Ordering: Specify rod size, figure number, name and finish.

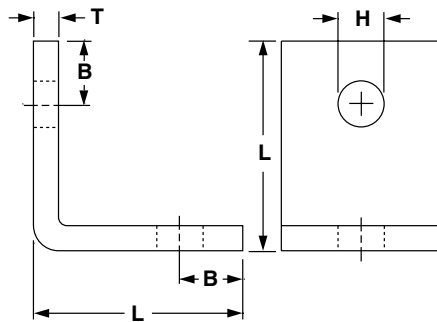
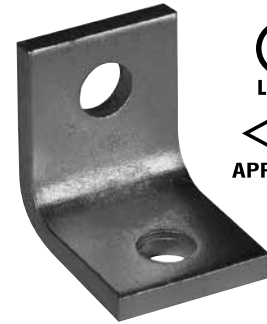


FIG. 206: DIMENSIONS (IN) • LOADS (LBS) • WEIGHT (LBS)

Rod Size A	Max Load		Weight (lbs).	L	B	Hole Size H	T
	With Lag Screw	With Bolt to Steel					
3/8	650	1,150	0.44	2 1/16	5/8	7/16	1/4
1/2			0.43			9/16	
5/8	850	2,000	0.84	2 1/2	3/4	1 1/16	3/8

PROJECT INFORMATION		APPROVAL STAMP	
Project:		<input type="checkbox"/> Approved	
Address:		<input type="checkbox"/> Approved as noted	
Contractor:		<input type="checkbox"/> Not approved	
Engineer:		Remarks:	
Submittal Date:			
Notes 1:			
Notes 2:			