

Fig. 261 (Formerly Afcon Fig. 400)

Extension Pipe or Riser Clamp

Size Range: 3/4" through 24"

Material: Carbon steel

Finish: Plain, Hot-Dip Galvanized with Zinc Plated Bolts & Nuts,
 Epoxy Coated or Painted.

Service: For support of stationary steel pipe risers, cast iron pipe or conduit. This product is not intended for use with hanger rods. For this application refer to Fig. 40 Riser Clamp, page 49.

Maximum Temperature: Plain 650° F, Galvanized and Epoxy 450° F

Approvals: Complies with Federal Specification A-A-1192A (Type 8) WW-H-171-E (Type 8), ANSI/MSS SP-69 and MSS SP-58 (Type 8).

UL, ULC Listed (Sizes 1 1/2" - 8").

Installation: Clamp is fitted and bolted preferably below a coupling, hub or welded lugs on steel pipe. Bolt torques should be per industry standards (see page 248). Clamp is designed for standard steel pipe O.D. and this must be considered in sizing the riser for other types of piping.

Ordering: Specify pipe size, figure number, name and finish.



Note: Refer to Technical Data Section of the Pipe Hanger Catalog for cast iron soil pipe data.

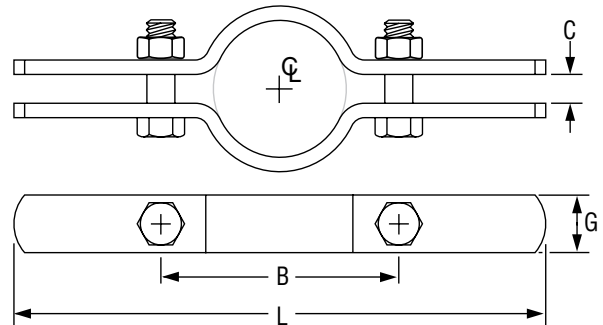


FIG. 261: DIMENSIONS (IN) • LOADS (LBS) • TORQUE (FT-LBS) • WEIGHT (LBS)

Pipe Size	Max Load	Weight	L	G Width	B	C	Bolt Diameter	Torque Values			
3/4	220	1.1	8 7/8	1	2 7/8	3/8	3/8	21			
1		1.1			3 1/8						
1 1/4		1.6			3 1/2						
1 1/2	1.6	3 7/8									
2	300	1.7	10 1/4		4 1/4	1/2	7/16		32		
2 1/2	400	1.9	11 1/4		4 3/4						
3	500	1.9	11 3/8		5 1/2	1/2	1/2			46	
3 1/2	600	2.3	12 7/8		6 1/2						
4	750	2.4	14 3/4		7	5/8	5/8				100
5	1,500	3.6			13 3/4						
6	1,600	4.0	14 3/4	9	2	5/8	150				
8	2,500	7.6	18 1/2	12							
10		11.1	20 1/4	13 3/4	3/4	3/4		190			
12	2,700	16.5	22 3/4	15 3/4							
14		17.7	24	17 1/4	2 1/2	3/4					
16	2,900	30.4	26	19 3/4							
18		33.8	28	21 3/4							
20		35.0	30	23 3/4							
24	3,200	82.0	36 3/4	3	30	1	7/8	190			

PROJECT INFORMATION

APPROVAL STAMP

Project:	<input type="checkbox"/> Approved
Address:	<input type="checkbox"/> Approved as noted
Contractor:	<input type="checkbox"/> Not approved
Engineer:	Remarks:
Submittal Date:	
Notes 1:	
Notes 2:	