



Ensemble™

32" (813 mm) AFD Bath
71121112

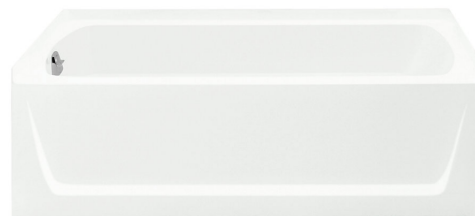


Features

- Durable high-gloss finish.
- Above-floor-drain (AFD) rough-in.
- 2" (51 mm) wainscot/tile ledge.
- 20" (508 mm) bath depth (floor to top of threshold).
- 60" (1524 mm) x 32" (813 mm) x 22" (559 mm) finished dimensions.

Material

- Compression molded from our exclusive solid Vikrell® material.



Codes/Standards

CSA B45.5/IAPMO Z124

ASTM E162

ASTM E662

Greenguard UL 2818 - Gold

HUD, UM Bulletin 73

STERLING® Warranty - Fixtures Made of Solid Vikrell Material

See website for detailed warranty information.

Available Color/Finishes

Color tiles intended for reference only.

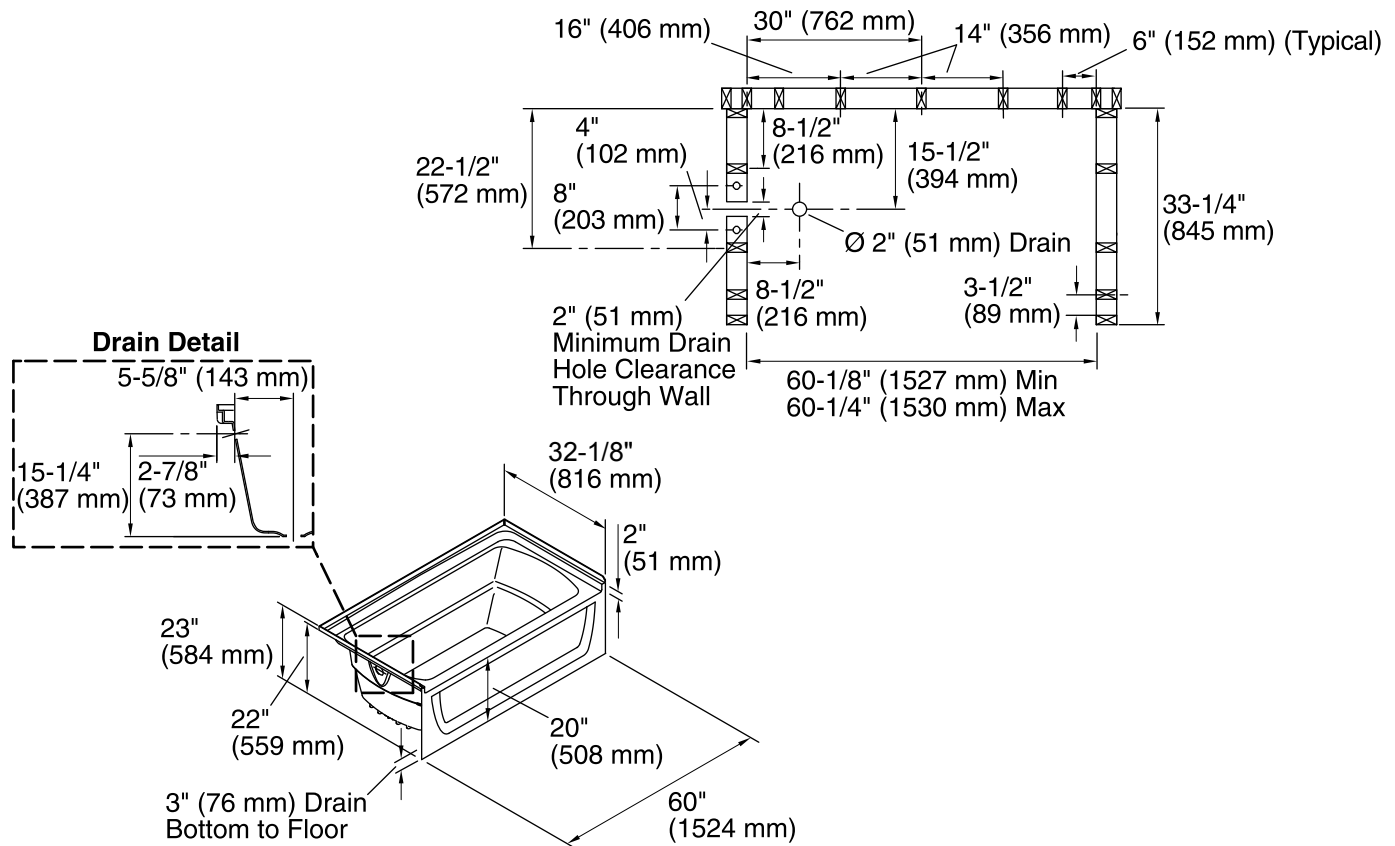
Color	Code	Description
-------	------	-------------



0	White
---	-------



96	Biscuit
----	---------



Technical Information

All product dimensions are nominal.

Installation:	Alcove with Flange
Drain location:	Left
Basin area, bottom:	42" x 20" (1067 mm x 508 mm)
Basin area, top:	54" x 26" (1372 mm x 660 mm)
Water depth:	13" (330 mm)
Water capacity:	51 gal (193.1 L)
Door width required:	57-11/16" (1465 mm)

Notes

Measure your actual product for roughing-in details.

Install this product according to the installation guide.

Double studding is recommended for pivot shower door installations.

Studs should be positioned roughly as shown.