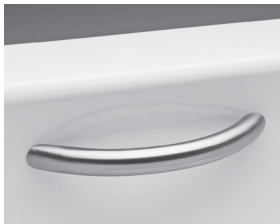


**Grab Bars**

Enhance accessibility and safety within and around the bath with grab bars. Grab bars are available for most models of tubs and may be added to the flat inner wall of the tub. MTI will install the grab bars in the best possible location unless otherwise specified by the customer.

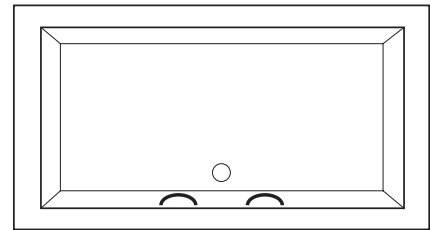


**Curved Acrylic - 9"** (set of 2) (GB) **\$290**  
Color Matched to Tub (white/bone/biscuit or almond only)



**Curved Metal - 9"** (set of 2)  
Chrome (GBMCC) or Brushed Nickel (GBMCCBN) **\$320**

***Note:** on center drain tubs, grab bars are placed on the front wall, positioned to the left and right of the overflow, as shown in the drawing to the right.*



**Pillows**



**Soft Rectangular Pillow**

11" (w) x 7" (h) x 1.5" (d)

Available in White (PRW) or Black (PRB) **\$115** (Specify when ordering.)

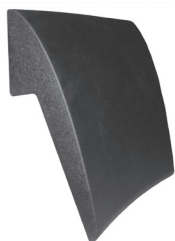
- Soft and durable vinyl provides support for neck or lumbar area.
- Removable. Attaches with suction cups.
- **Works with any type of tub backrest contour.**



**Contoured Magnetic Pillow - 10.625" (w) x 6.75" (h)**

Available in Black only (PICM) **\$150**

- Soft and durable vinyl provides support for head & neck.
- Removable. Held in place by magnets integrated into the tub structure.
- Available for the following tubs with a contoured, raised head rest: #32, 38, 44, 45, 46, 48, 70 and 86.
- When this pillow will be used with a center drain or corner tub, the location of the pillow must be specified at the time of order.
- **Must be ordered with the tub.**



**Straight Magnetic Pillow - 13" (w) x 13.75" (h)**

Available in Black only (PISM) **\$195**

- Soft and durable vinyl provides support for head & neck.
- Removable. Held in place by magnets integrated into the tub structure.
- Ideal for tubs with a straight, flat deck and straight back rest.
- When this pillow will be used with a center drain or corner tub, the location of the pillow must be specified at the time of order.
- **Must be ordered with the tub.**