

Fig. 207 (Formerly Afcon Fig. 553/555)

Threaded Steel Side Beam Bracket

Size Range: $\frac{3}{8}$ " and $\frac{1}{2}$ "

Material: Carbon steel

Finish: Plain or Zinc Plated

Service: Recommended for attachment to steel or wooden beams, etc.

Approvals: Complies with Federal Specification A-A-1192A (Type 34), WW-H-171-E (Type 35), ANSI/MSS SP-69 and MSS SP-58 (Type 34). UL Listed (Sizes $\frac{3}{8}$ " and $\frac{1}{2}$ ").

FM Approved (Size $\frac{3}{8}$ " for use on steel beam only)

Features: Threaded mounting bracket provides an economical, practical, and adjustable means of securing hangers to beams.

Ordering: Specify rod size, figure number, name and finish.

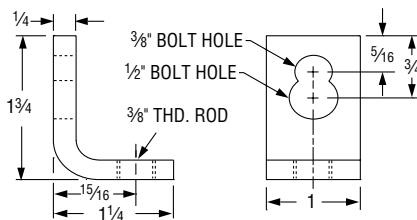


Fig. 207 $\frac{3}{8}$ "

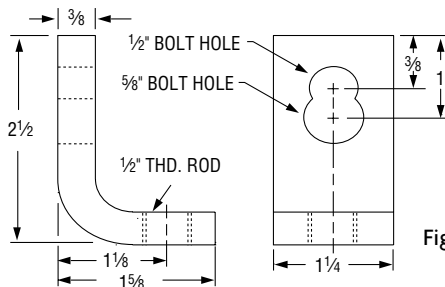


Fig. 207 $\frac{1}{2}$ "

FIG. 207: DIMENSIONS (IN) • LOADS (LBS) • WEIGHT (LBS)				
Rod Size A	Bolt Size	Max Load		Weight
		With Lag Screw	With Bolt to Steel	
$\frac{3}{8}$	$\frac{3}{8}$	400	620	0.17
	$\frac{1}{2}$	560		
$\frac{1}{2}$	$\frac{1}{2}$	650	1,150	0.42
	$\frac{5}{8}$	850		

PROJECT INFORMATION		APPROVAL STAMP	
Project:		<input type="checkbox"/> Approved	
Address:		<input type="checkbox"/> Approved as noted	
Contractor:		<input type="checkbox"/> Not approved	
Engineer:		Remarks:	
Submittal Date:			
Notes 1:			
Notes 2:			