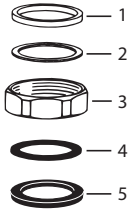


Flush Connections and Flanges

Couplings and Gaskets

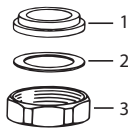
Item No.	Code No.	Part No.	Description
F-2-A			
1-3	0306052	F-2-A	3/4" CP Coupling Assembly
	0306054	F-2-A	3/4" RB Coupling Assembly
	0306077	F-2-A	1" CP Coupling Assembly
	0306060	F-2-A	1-1/4" CP Coupling Assembly
	0306059	F-2-A	1-1/4" RB Coupling Assembly
	0306093	F-2-A	1-1/2" CP Coupling Assembly
	0306088	F-2-A	1-1/2" RB Coupling Assembly
3-4	0306092	F-2-A	1-1/2" CP Coupling Assembly
	0306087	F-2-A	1-1/2" RB Coupling Assembly
1	5306113	F-5	3/4" SJ Gasket
	5306115	F-5	1" SJ Gasket
	5322176	VPF-5	1-1/4" SJ Gasket
	5322001	VPF-5	1-1/2" SJ Gasket
2	5306055	F-3	3/4" Friction Ring
	5306056	F-3	1" Friction Ring
	5306057	F-3	1-1/4" Friction Ring
	5306058	F-3	1-1/2" Friction Ring
3	*	F-2	3/4" CP Coupling
	*	F-2	3/4" RB Coupling
	*	F-2	1" CP Coupling
	*	F-2	1-1/4" CP Coupling
	*	F-2	1-1/4" RB Coupling
	0306045PK	F-2	1-1/2" CP Coupling
	*	F-2	1-1/2" RB Coupling
4	5319086	S-30	1-1/2" Gasket
5	0319079	S-21	1-1/2" Rigid Seat
3-5	0306091	F-2-A	1-1/2" with S-21 Seat



*N/A order appropriate F-2-A

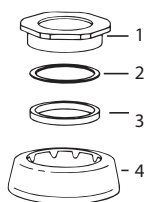
NF-2-A

1	0396264	F-105	1-1/2" x 1-1/4" SJ Gasket
1-3	0314011	NF-2-A	1-1/2" x 1-1/4" SJ Reducing Coupling Assembly



Spud Coupling Assemblies

Item No.	Code No.	Part No.	Description
F-5-A			
1-4	0306125	F-5-A	3/4" CP Spud Coupling Assembly
	0306132	F-5-A	1" CP Spud Coupling Assembly
	0306140	F-5-A	1-1/4" CP Spud Coupling Assembly
	0306146	F-5-A	1-1/2" CP Spud Coupling Assembly
1-3	0396516	F-20-A	3/4" Spud Coupling
	0306538	F-20-A	1" Spud Coupling
	0306524	F-20-A	1-1/4" Spud Coupling
	0306526	F-20-A	1-1/2" Spud Coupling
2	5306055	F-3	3/4" Friction Ring
	5306056	F-3	1" Friction Ring
	5306057	F-3	1-1/4" Friction Ring
	5306058	F-3	1-1/2" Friction Ring
3	5306113	F-5	3/4" SJ Gasket
	5306115	F-5	1" SJ Gasket
	5322176	VPF-5	1-1/4" Gasket
	5322001	VPF-5	1-1/2" Gasket
4	0306189	F-7	3/4" Spud Flange
	0306197	F-7	1" Spud Flange
	0306214	F-7	1-1/4" Spud Flange
	0306238	F-7	1-1/2" Spud Flange



Wall Flange For Tubing

Code No.	Part No.	Description
F-7 (2-3/4" O.D. X 5/8" Deep)		
0306204	F-7	1-1/4" Tube Flange
0306237	F-7	1-1/2" Tube Flange



Supply Flange For Iron Pipe

Code No.	Part No.	Description
F-7 (2-3/4" O.D.)		
0306191	F-7	3/4" IPS CP Supply Flange
0306196	F-7	1" IPS CP Supply Flange
0306205	F-7	1-1/4" IPS CP Supply Flange



F-7 (2-3/4" O.D. Flat)

0306167	F-7	1/2" IPS CP Supply Flange
0306188	F-7	3/4" IPS CP Supply Flange
0306201	F-7	1" IPS CP Supply Flange
0306209	F-7	1-1/4" IPS CP Supply Flange



F-45-A

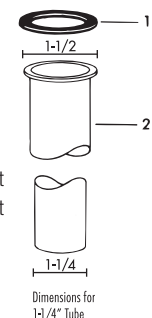
0396019	F-45-A	3/4" Heavy Supply Flange with Set Screw for IPS
0396020	F-45-A	1" Heavy Supply Flange with Set Screw for IPS



For additional flanges, see 4.9.1

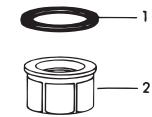
Outlets

Item No.	Code No.	Part No.	Description
F-1 (Flanged)			
1	5319086	S-30	Gasket
2	0306007	F-1	1-1/2" x 1-1/4" x 6" CP Flanged Outlet
	0306009	F-1	1-1/2" x 1-1/4" x 8" CP Flanged Outlet
	0306012	F-1	1-1/2" x 1-1/4" x 10" CP Flanged Outlet
	0306013	F-1	1-1/2" x 1-1/4" x 12" CP Flanged Outlet
	0306031	F-1	1-1/2" x 6" CP Flanged Outlet
	0306034	F-1	1-1/2" x 8" CP Flanged Outlet
	0306039	F-1	1-1/2" x 10" CP Flanged Outlet
	0306044	F-1	1-1/2" x 12" CP Flanged Outlet



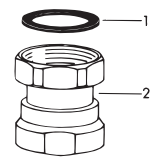
F-22

1	5319086	S-30	Gasket
2	0206159	F-22	1/2" IPS RB Female Outlet
	0206160	F-22	3/4" IPS RB Female Outlet
	0306569	F-22	1" IPS RB Female Outlet



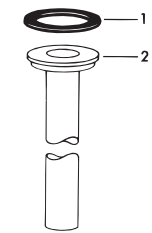
F-22-A

1-2	0306574	F-22-A	1-1/4" IPS RB Union Outlet Assembly
	0306575	F-22-A	1-1/4" IPS CP Union Outlet Assembly
1	5319086	S-30	Gasket



F-29-A

1	5319086	S-30	Gasket
2	0306767	F-29-A	3/4" x 6" CP Outlet
	0306769	F-29-A	3/4" x 7-1/2" RB Outlet
	0306773	F-29-A	3/4" x 8-1/2" CP Outlet
	0306791	F-29-A	3/4" x 10-1/2" RB Outlet



Note: 3-1/2" spud flange available in old style only.

Showerheads, Parts and Accessories