

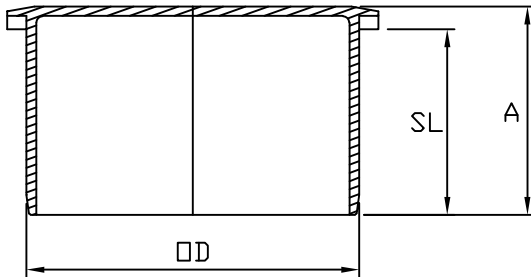


MULTI FITTINGS

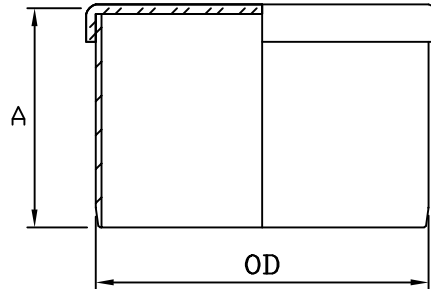
LAYING LENGTH

ISSUE DATE: OCT 30/17
SUPERCEDES: SEPT 14/07

SPIGOT PLUG



INJECTION MOLDED FITTING (M)



FABRICATED FITTING (F)

	SIZE	PART NUMBER	A REF	SL REF	OD
M =	4	067654	3.375	2.875	4.215
M =	6	067656	4.000	3.500	6.275
P =	8	067658	-	-	8.400
F @	10	067660	11.500	-	10.500
F @	12	067661	11.500	-	12.500
F @	15	067662	14.000	-	15.300
F @	18	067663	18.000	-	18.701

NOTE: = Refer to Page HW4 for Hub Detail, Type A
@ Refer to Page HW5 for Hub Detail, Fabricated