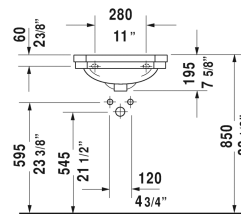
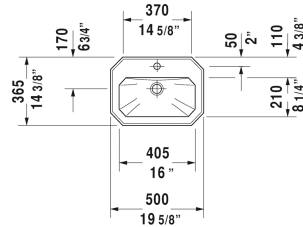


1930 Handrinse basin # 0785500000

| < 19 5/8" Inch > |



Handrinse basin	Dimension	Weight	Order number
with overflow, with faucet deck, underside fully glazed, hardware included, wall-mounted, cUPC® listed*, 19 5/8" Inch			
Colors			
00 White			
Variant			
●	19 5/8" x 14 3/8" Inch	24.2 lb	0785500000
Infobox			
* Complies with following standards: ASME A112.19.2/CSA B45.1			
Sanitary ceramics with the special WonderGliss surface finish will remain clean and attractive-looking for a long time to come. When ordering WonderGliss please add a "1" as eleventh digit to the model number.			

All drawings contain the necessary measurements which are subject to standard tolerances. They are stated in inch & mm and are non-binding. Exact measurements, in particular for customized installation scenarios, can only be taken from the finished ceramic piece.