

## FLANGED END METAL BRAIDED FLEXIBLE CONNECTOR

Flexible connectors are used to absorb thermal and seismic movement, absorb hydraulic shock, provide vibration and noise dampening, ease installation and correct minor misalignment of piping and components. They come in a variety of sizes, materials, and connection ends for numerous applications.

The inner hose is an annular (bellows) design. An annular hose is better suited for pump connections because it can better sustain torsion stress due to longitudinal expansion from rises in pressure. Metal wire braid on a hose assembly restrains against hose elongation under higher pressures and acts to dampen vibration. A heavy braid also increases abrasion resistance. Optimal braid coverage will contain the core under pressure and reduce the possibility of twisting and squirting.

The use of braided metal connectors for applications such as pumps, compressors and other mechanical equipment can enhance the overall operation of a system.

Braided connectors have the advantages of:

- Longer service life
- Increased pressure capacity
- Greater fatigue resistance due to flex
- Increased temperature capacity of media
- Greater protection of annular hose
- Acceptance of thermal expansion

\* NOT RECOMMENDED FOR STEAM OR VACUUM SERVICE



### Pressure / Temperature

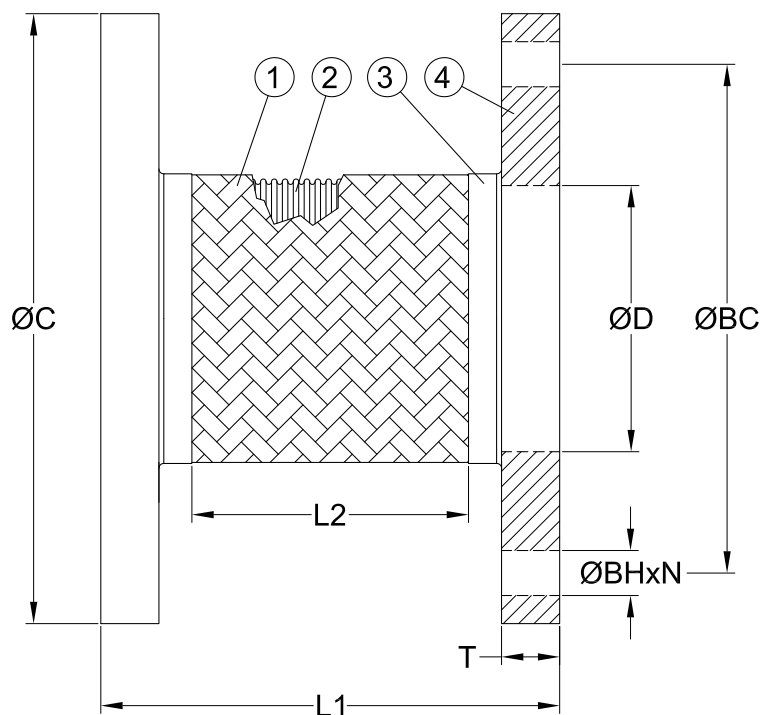
Size	Pressure @ 70°F		Pressure Factors for Above 70°F*			
	Working PSI	Test PSI	°F	Factor	°F	Factor
2	455	683	100	0.99	450	0.81
2-1/2	345	518	150	0.96	500	0.79
3	290	435	200	0.94	550	0.76
4	250	375	250	0.92	600	0.74
5	200	300	300	0.89	650	0.72
6	210	315	350	0.86	800	0.66
8	190	285	400	0.84	1000	0.60
10	150	225				

\* Multiply working pressure by pressure factor for temperature adjusted pressure rating.

### Part Numbers & Weight

Size	Part Number	Approx. Wt (Lbs)
2	FNW30FK	12
2-1/2	FNW30FL	13
3	FNW30FM	14
4	FNW30FP	19
5	FNW30FS	27
6	FNW30FU	32
8	FNW30Fx	50
10	FNW30F10	76

## FLANGED END METAL BRAIDED FLEXIBLE CONNECTOR



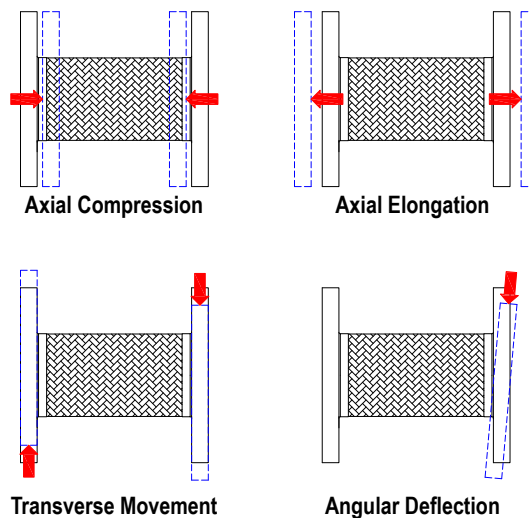
**Dimensions (inches)**

Size	ØC	ØD	L1	L2	ØBC	ØBH	N	T
2	6.0	2.44	9	5.78	4.75	0.75	4	0.62
2-1/2	7.0	2.94	9	5.78	5.50	0.75	4	0.62
3	7.5	3.57	9	5.78	6.00	0.75	4	0.62
4	9.0	4.57	9	5.39	7.50	0.75	8	0.62
5	10.0	5.66	11	7.14	8.50	0.87	8	0.75
6	11.0	6.72	11	6.74	9.50	0.87	8	0.75
8	13.5	8.72	12	7.24	11.75	0.87	8	1.00
10	16.0	10.88	13	7.85	14.25	1.00	12	1.00

**Standard Materials**

Ref. No.	Description	Material
1	Hose Braid	304 Stainless Steel
2	Corrugated Hose	321 Stainless Steel
3	Braid Band	304 Stainless Steel
4	Flange	Carbon Steel
5	Welding	Grade er308 Stainless

**Braid Limits**



Size	Maximum Axial Compression	Maximum Axial Elongation	Maximum Transverse Movement	Maximum Angular Deflection
2	0.16"	0.16"	±0.12"	1.5°
2-1/2	0.16"	0.16"	±0.12"	1.5°
3	0.16"	0.16"	±0.12"	1.5°
4	0.16"	0.16"	±0.12"	1.5°
5	0.20"	0.20"	±0.16"	1°
6	0.20"	0.20"	±0.16"	1°
8	0.20"	0.20"	±0.16"	1°
10	0.20"	0.20"	±0.16"	1°

DOC: FNW30F05 Ver. 6/2018

© 2018 - FNW. All rights reserved.

The FNW logo is a trademark of Ferguson Enterprises, Inc., PL Sourcing, PO Box 2778, Newport News, VA 23609

The contents of this publication are presented for information purposes only, and while effort has been made to ensure their accuracy, they are not to be construed as warranties or guarantees, expressed or implied, regarding the products or services described herein or their use or applicability. All sales are governed by our terms and conditions, which are available on request. We reserve the right to modify or improve the designs or specifications of our products at any time without notice. Always verify that you have the most recent product specifications or other documentation prior to the installation of these products.