

Price Pfister®

 Pfreshest Ideas in Pfaucets.

49-CB Series

Serie 49-CB

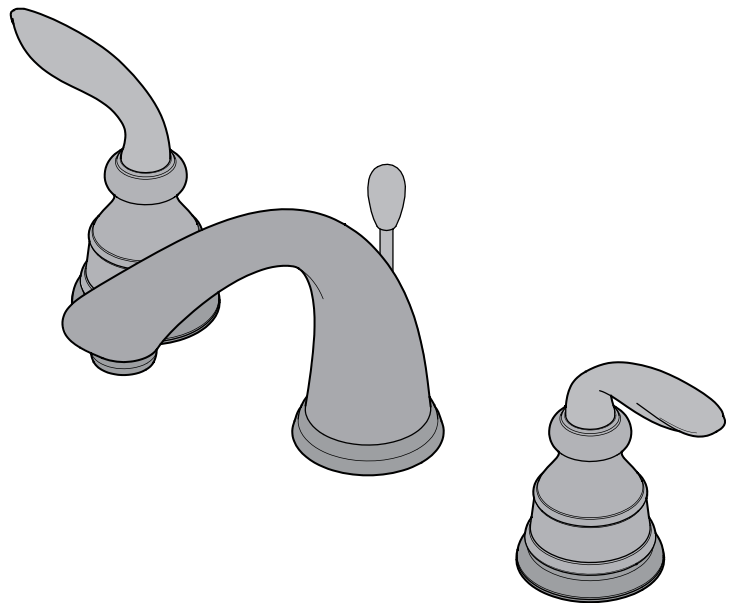
Série 49-CB

Avalon™

Lavatory Widespread Faucet

Grifo Extenso Para Baño

Robinet Sans Applique Pour Lavabo



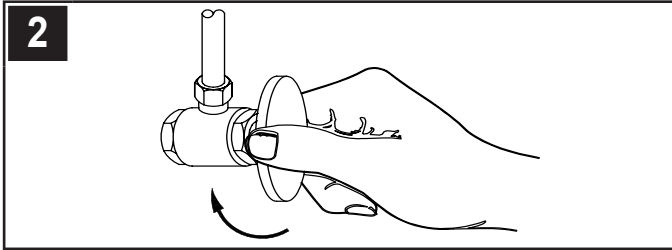
Thank you for purchasing this Price Pfister bathroom faucet. All Price Pfister products are carefully engineered, and factory tested to provide long trouble-free use under normal conditions. This bathroom faucet is easy to install using basic tools and our easy to follow illustrated instructions. If you have any questions regarding your bathroom faucet installation call 1-800-Pfaucet (1-800-732-8238).

1 BEFORE PROCEEDING



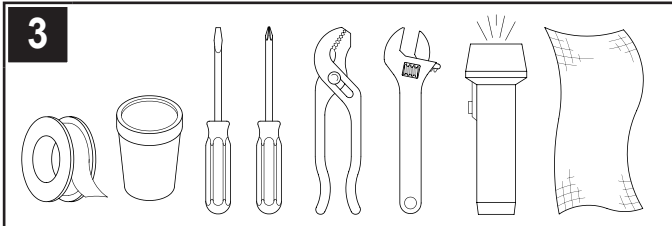
WARNING: Read all the instructions completely before proceeding. Price Pfister recommends calling a professional if you are uncertain about installing this product!

This product should be installed in accordance with all local and state plumbing and building codes.



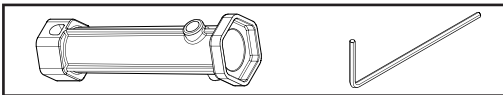
2 SHUT OFF WATER SUPPLY

Locate water supply inlets and shut off the water supply valves. These are usually found under the sink or near the water meter. If you are replacing an existing faucet, remove the faucet from the sink and clean the sink surface thoroughly.



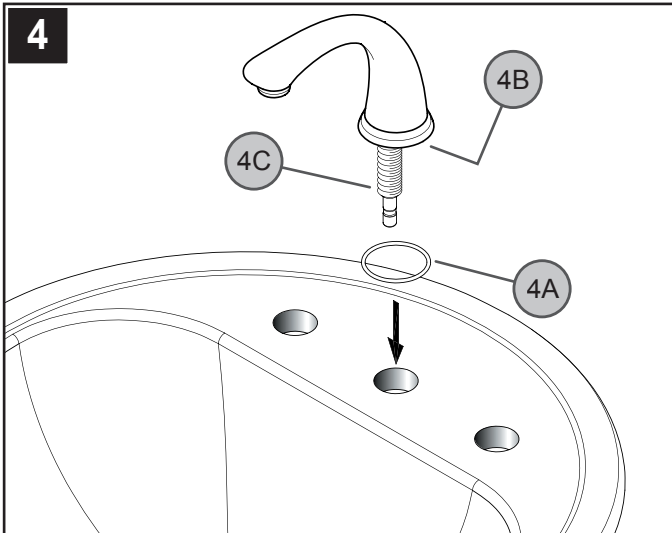
3 TOOLS RECOMMENDED

- PTFE plumber's tape or thread sealant
 - Slotted screwdriver
 - Adjustable wrench
 - Plumber's putty
 - Phillips head screwdriver
 - Flashlight
 - Pliers
 - Cloth
- Your installation may require new supply lines and/or shut-off valves or other additional tools.



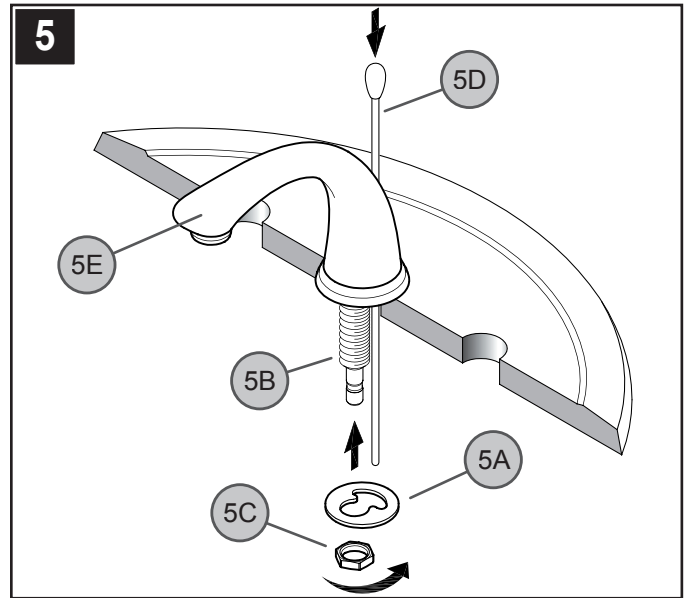
This product comes with an installation tool used for securing the spout, and valve body assemblies, as well as a hex wrench for tightening a set screw into the handle.

INSTALLATION STEPS



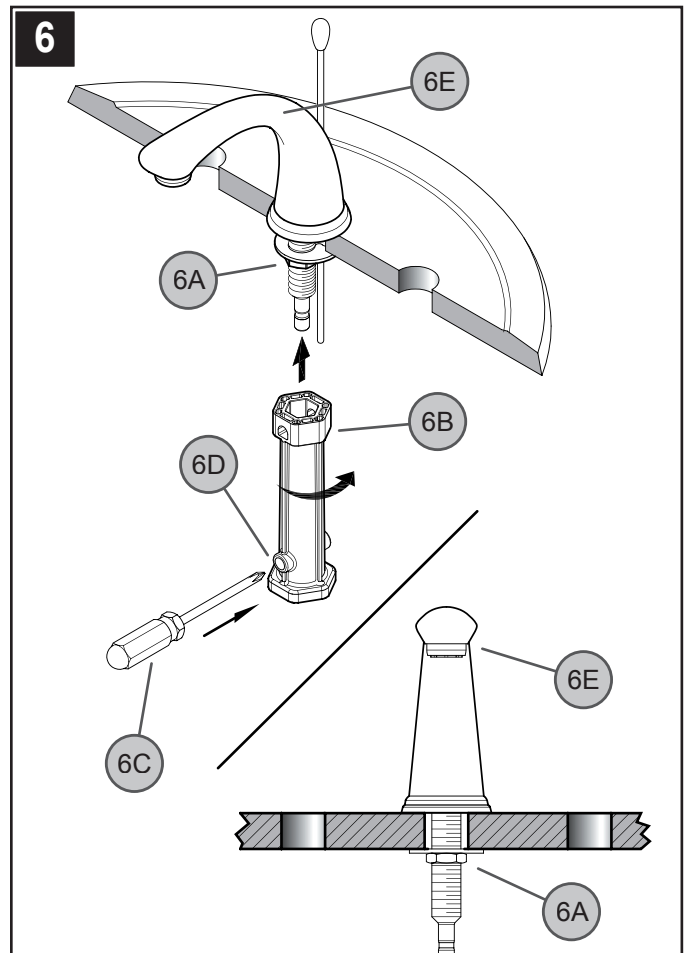
4 SPOUT ATTACHMENT

Place the round Seal (4A) against the bottom of Spout Body (4B). Insert Spout Shank (4C) through the center hole of sink.



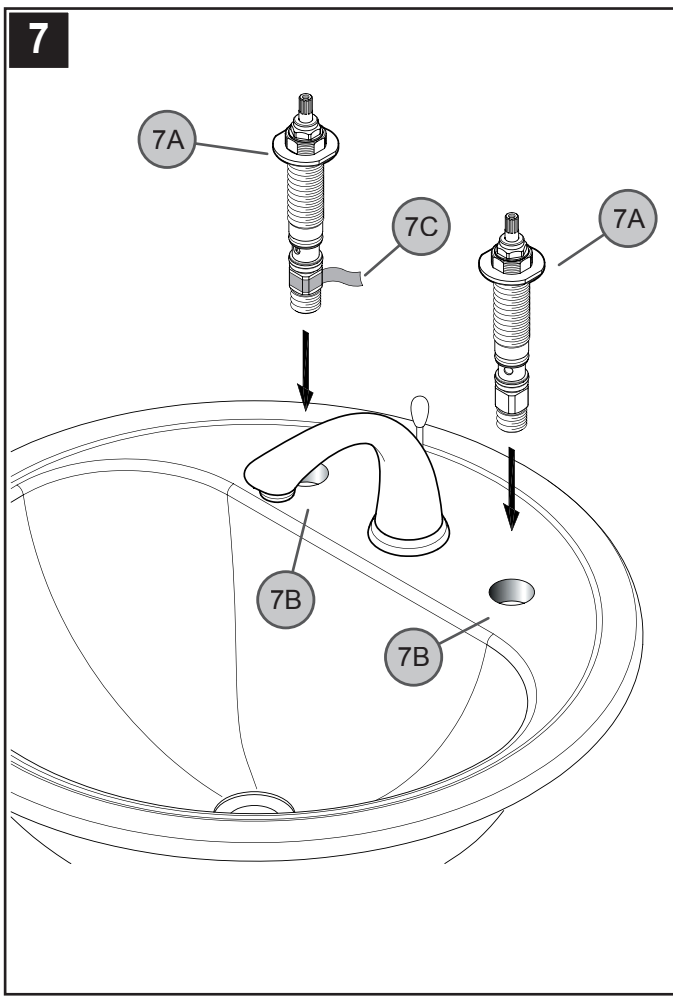
5 SPOUT INSTALLATION

Insert Lift Rod (5D) into hole at the back of Spout (5E). From underneath sink, place Mounting Washer (5A) onto Spout Shank (5B) and hand tighten with Mounting Nut (5C). Align Lift Rod (5D) with slot in Mounting Washer (5A).



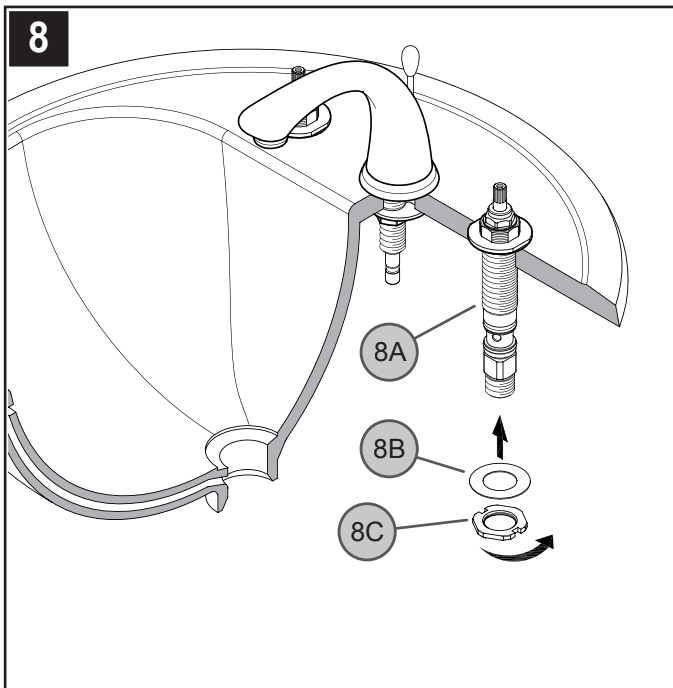
6 SECURING SPOUT

From underneath, tighten Mounting Nut (6A) by using Installation Tool (6B). Before final tightening, be sure Spout (6E) is centered and facing forward. For better leverage, use a Screwdriver (6C), insert it through Hole (6D) and tighten the Mounting Nut (6A) until Spout (6E) is firmly secured to sink.



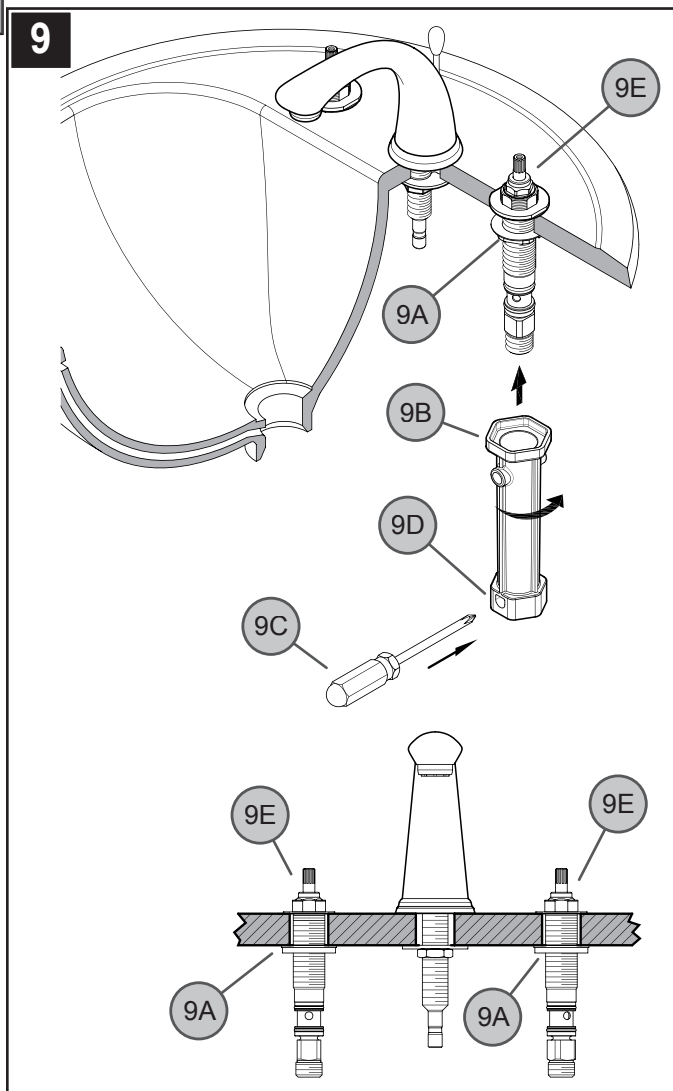
7 VALVE BODY ATTACHMENT

From above sink, insert Valve Body (7A) through Mounting Holes (7B). The HOT valve, labeled with Red Tag (7C), should be positioned to the left side of the spout.



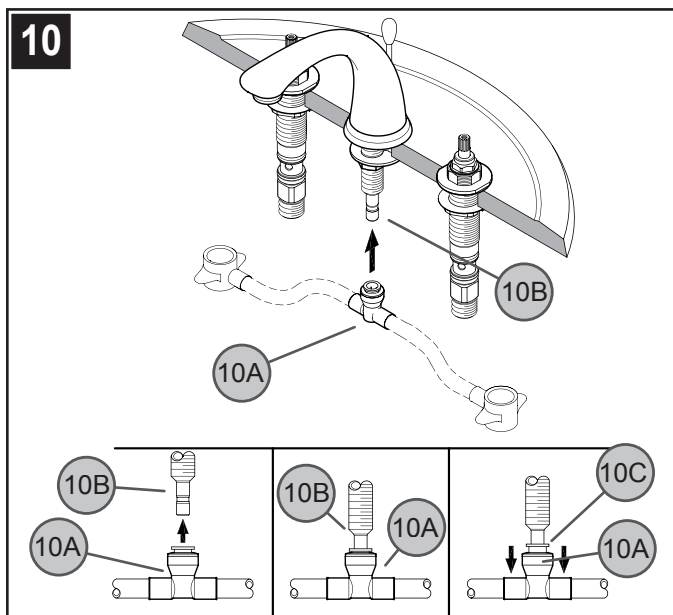
8 VALVE BODY INSTALLATION

From underneath sink, place Mounting Washer (8B) onto Valve Shank (8A) and tighten with Mounting Nut (8C).



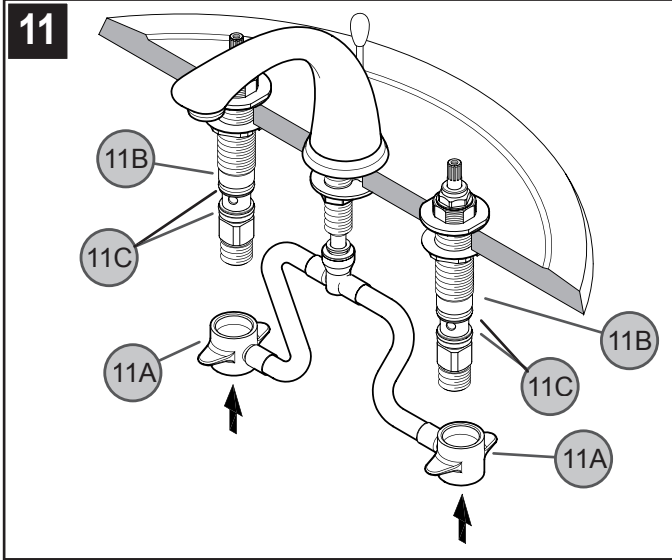
9 SECURING VALVE BODY

From underneath, tighten Mounting Nut (9A) by using Installation Tool (9B). For better leverage, use a Screwdriver (9C), insert it through Hole (9D) and tighten the Mounting Nut (9A) until Valve (9E) is firmly secured to sink.



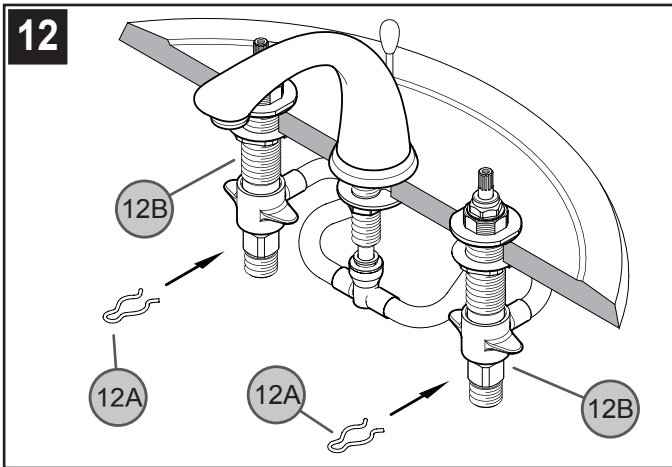
10 HOSE CONNECTION TO SPOUT BODY

From underneath sink, push the Center Connector (10A) onto receiving Tube (10B), until unable to push any further. Pull down on the quick connect housing (10C). If the housing and the Inner Collet (10C) separate slightly but do not pull off the receiving Tube (10B), the connection is secure.



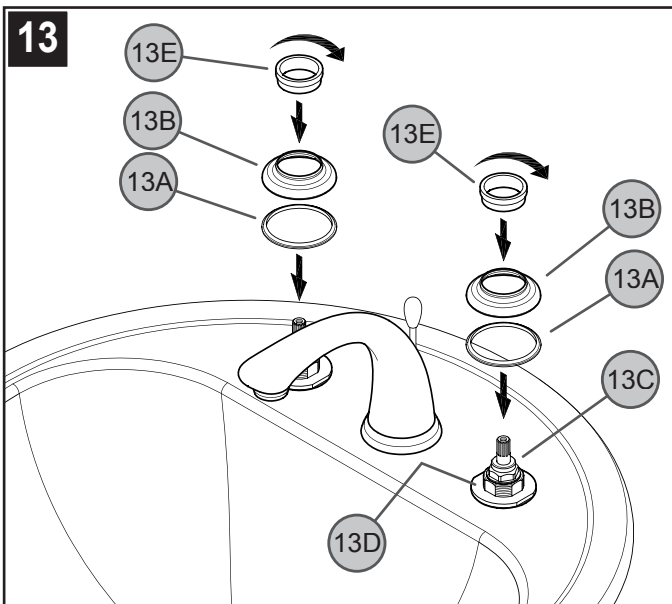
11 HOSE CONNECTION TO VALVE BODY

Slide the End Connectors (11A) onto the Valve Bodies (11B). Push the End Connectors (11A) all the way up until completely seated. Be careful not to damage O-Rings (11C).



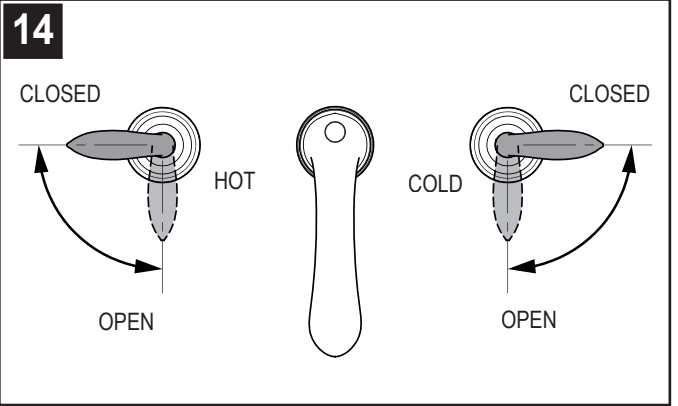
12 SECURING HOSE CONNECTIONS

Place Clips (12A) onto End Bodies (12B).



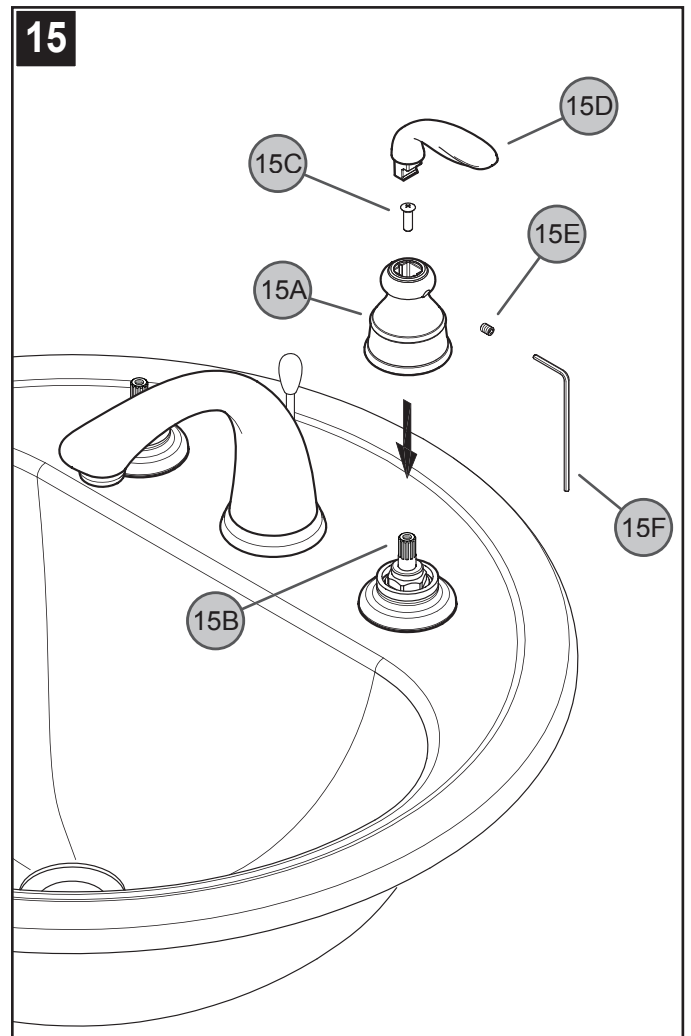
13 VALVE FLANGE ATTACHMENT

Place Plastic Ring (13A) and Flange (13B) over Valve Body (13C) covering the Valve Body Washers (13D). Secure by screwing the Plastic Nut (13E) onto the Valve Body (13C).



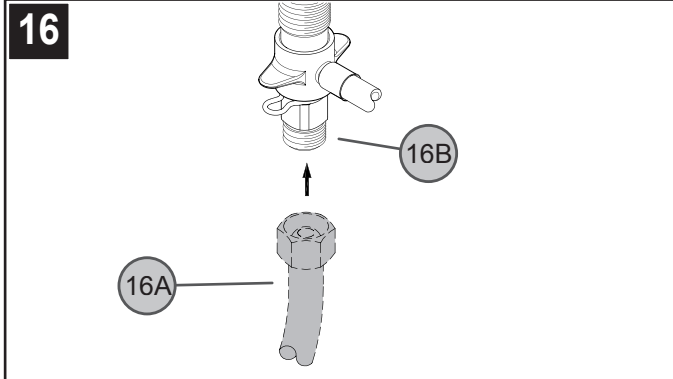
14 VALVE FUNCTION

Valve function—COLD valve: close-counterclockwise, open-clockwise.
HOT valve: close-clockwise, open-counterclockwise.



15 HANDLE ATTACHMENT

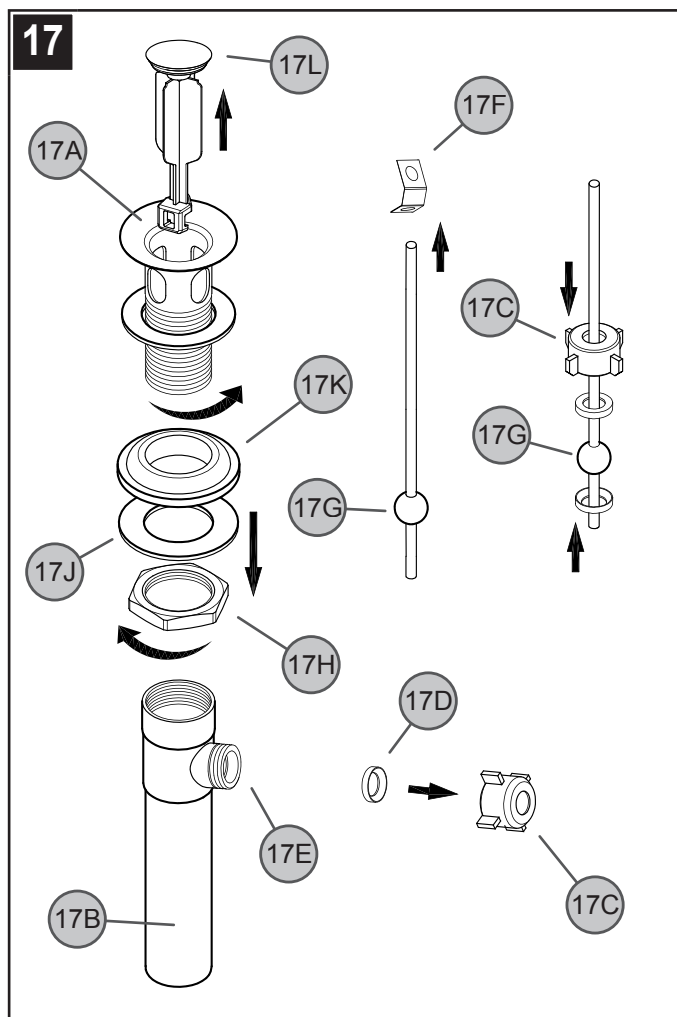
With valves in "CLOSE" position, place Handle Hub (15A) onto Valve Stem (15B) and secure with Fastener (15C). Connect Lever (15D) onto Handle Hub (15A) and secure by tightening Set Screw (15E) with Hex Wrench (15F).



16 WATER SUPPLY CONNECTIONS

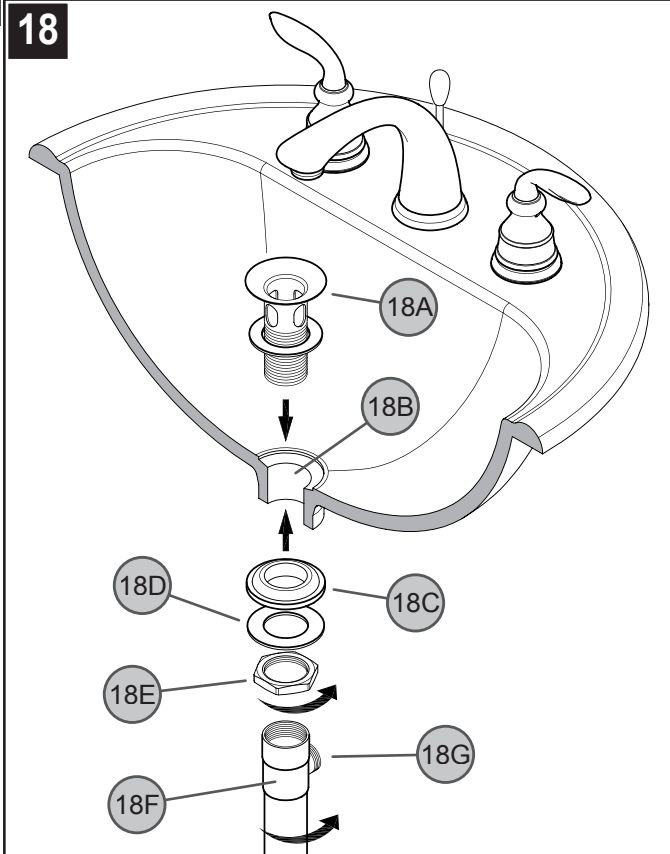
Connect water Supply Lines (16A) to Faucet Inlets (16B). (Supply lines and fittings are not included). Please follow manufacturer's instructions when installing supply lines.

POP-UP DRAIN BODY INSTALLATION STEPS



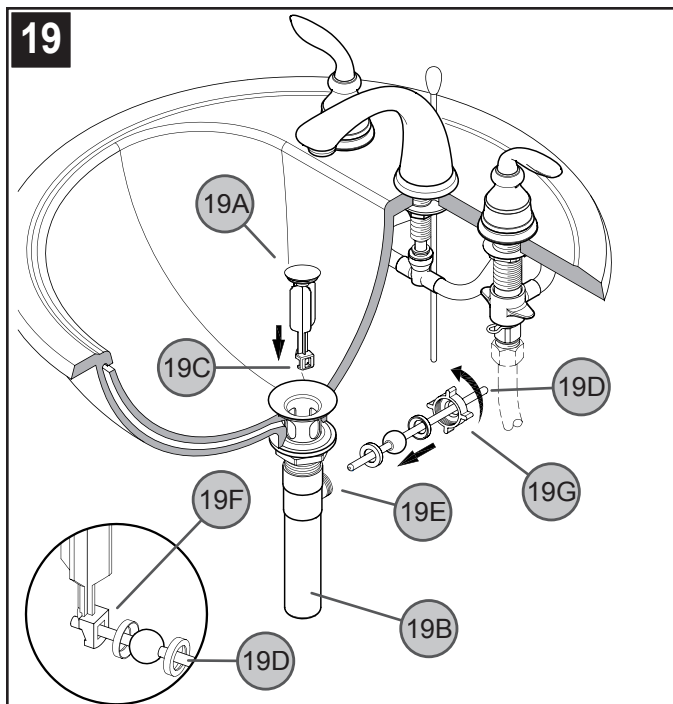
17 POP-UP PREPARATION

Remove Flange (17A) and unscrew Nut (17C) from the Pop-Up Drain Body (17B). Retain the Packing Ring (17D) inside the Ball Rod Opening (17E). Take off the Spring Clip (17F) from the Ball Rod (17G). Place the Nut (17C) on the Ball Rod (17G). Remove Locknut (17H), Friction Washer (17J), Rubber Washer (17K) and Stopper (17L) from Flange (17A).



18 POP-UP INSTALLATION

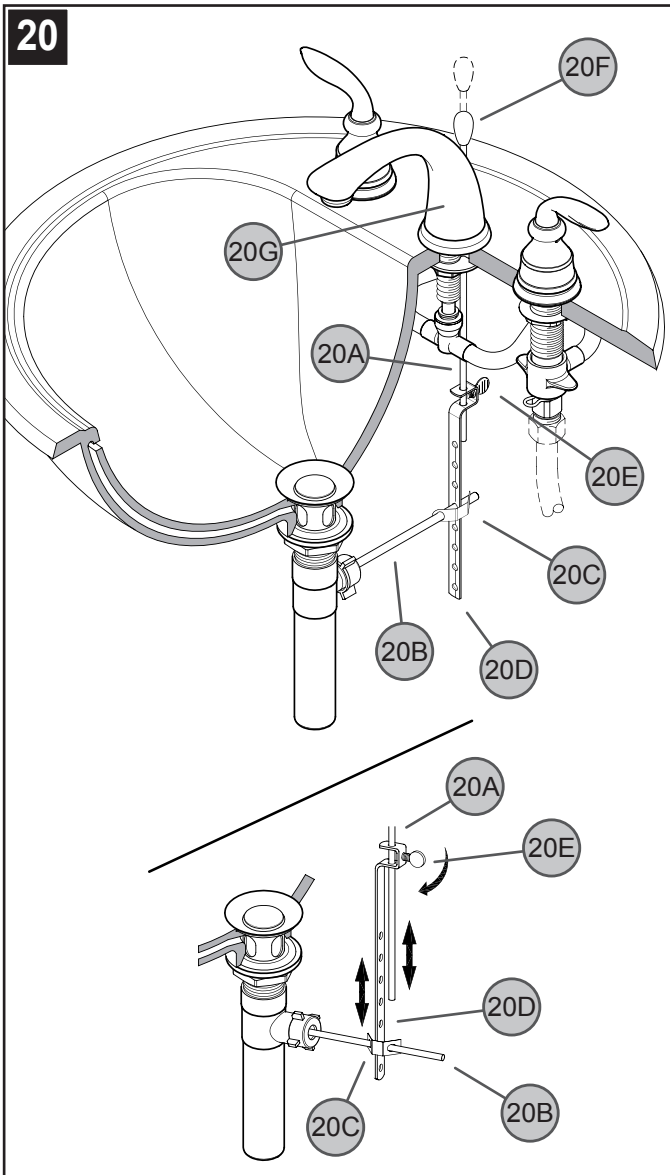
Apply a small bead of putty underneath the Flange (18A) and place a ring of putty around Drain Opening (18B) of sink. Use PTFE plumber's tape to all threaded fittings according to manufacturer's instructions. Insert Flange (18A) into Drain Opening (18B). From underneath, insert Rubber Washer (18C) and Friction Washer (18D) through the bottom of Flange (18A). Thread Locknut (18E) until Rubber Washer (18C) seats securely inside Drain Opening (18B). Thread Drain Body (18F) to bottom of Flange (18A). Hand tighten and adjust the Drain Body so that the Ball Rod Opening (18G) faces the rear. Wrench tighten Locknut (18E) and wipe excess putty.



19 BALL ROD ADJUSTMENT

Drop the Stopper (19A) into Drain Body (19B) from the top with the Off-Set (19C) facing rear. From below, insert the Ball Rod (19D) into the Ball Rod Opening (19E) through the Stopper Hole (19F) and secure with Nut (19G).

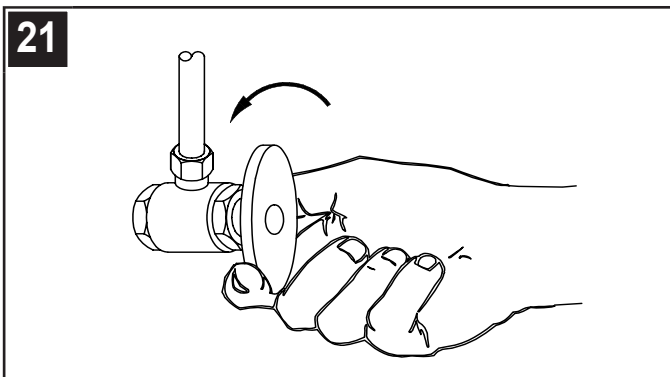
20



20 POP-UP ROD LINKAGE & ADJUSTMENT

Place one end of Spring Clip (20C) on end of Ball Rod (20B). Insert Ball Rod (20B) across and through hole in Pop-Up Strap (20D). Secure other end of Spring Clip (20C). Insert bottom of Lift Rod (20A) into hole at top of Pop-Up Strap (20D). Tighten with Thumb Screw (20E). Adjust Lift Rod (20A) height by using the Thumb Screw (20E) on the Strap (20D) or by adjusting the hole in which Ball Rod (20B) goes through the Pop-Up Strap (20D). Be sure to leave enough space between Lift Rod Knob (20F) and Spout Head (20G) when Lift Rod is down.

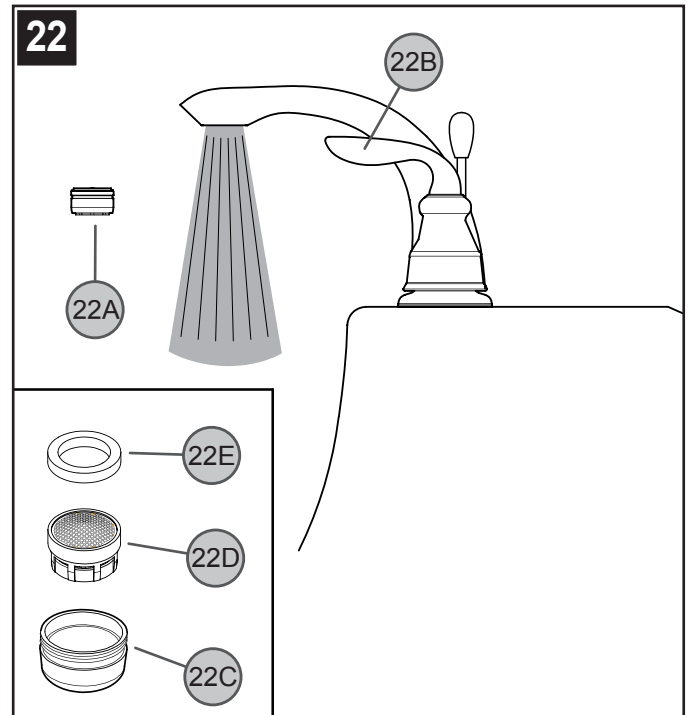
21



21 UNIT START UP

Turn on hot and cold water supplies, and check for leaks above and below the sink.

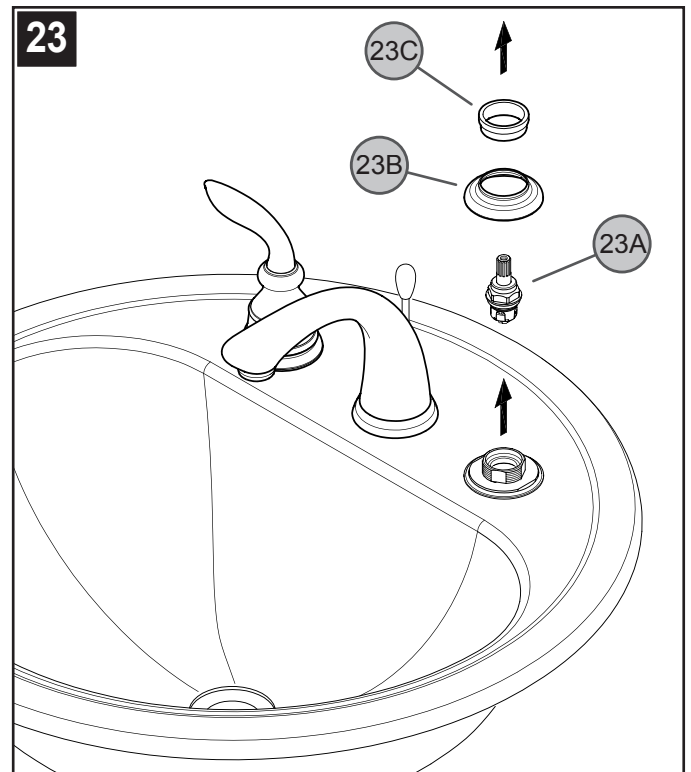
22



22 FLUSHING & AERATOR CLEANING

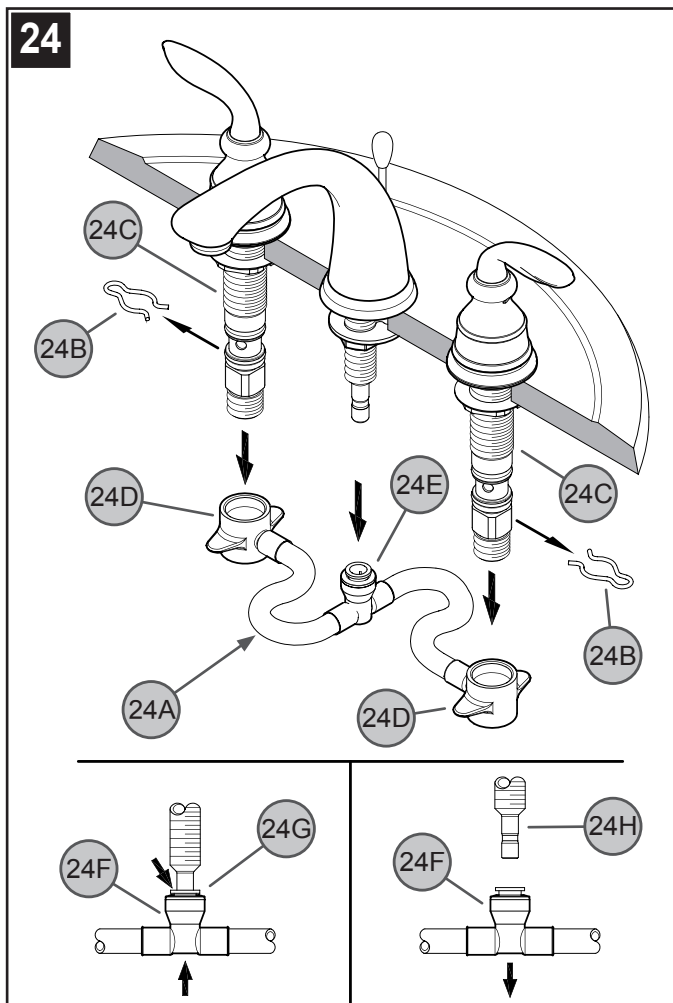
After installation is complete, remove Aerator Housing (22A). Turn Valves (22B) on and allow both hot and cold water to run for at least one minute each. While water is running, check for leaks. To clean the aerator, disassemble Aerator Housing (22A) by separating the Aerator Shell (22C), Basket (22D), and Washer (22E). Once parts have been cleaned, reassemble by reversing steps.

23



23 VALVE CARTRIDGE MAINTENANCE

Turn off water supplies and relieve pressure before working on your faucet (see step 2). Remove Handles (see step 15), Valve Flange (23B) and Plastic Nut (23C) (see step 13), unscrew Cartridge Assembly (23A) and inspect. Replace parts as necessary.



24 HOSE CONNECTION MAINTENANCE

To detach Hose Assembly (24A), remove Clips (24B) from End Valve (24C) and pull the End Connectors (24D) from End Valves (24C). Remove Center Connector (24E) by pushing up on Quick Connect Housing (24F). Holding gray plastic Collet (24G) in place, pull down on Quick Connect Housing (24F) until Tube (24H) is free.



CAUTION: Maintenance

DISASSEMBLY

1. Replacement parts may be available at the store where you purchased your faucet.
2. When replacement parts are not available, please write or call Price Pfister Consumer Service.
3. **Always turn off water and relieve pressure before working on your faucet.**



NOTE: Trim Care

Cleaning Instructions:

For all handles and decorative finishes, use only a soft damp cloth to clean and shine. Use of polish, detergents, abrasive cleaners, organic solvents, or acid may cause damage. **Use of other than a soft damp cloth will nullify our warranty!**

Special Trim:

Trim products which contain porcelain or other similar substances are not acceptable for public areas or commercial use. Installation of said trim is at user's risk!



1-800-PFAUCET (1-800-732-8238)

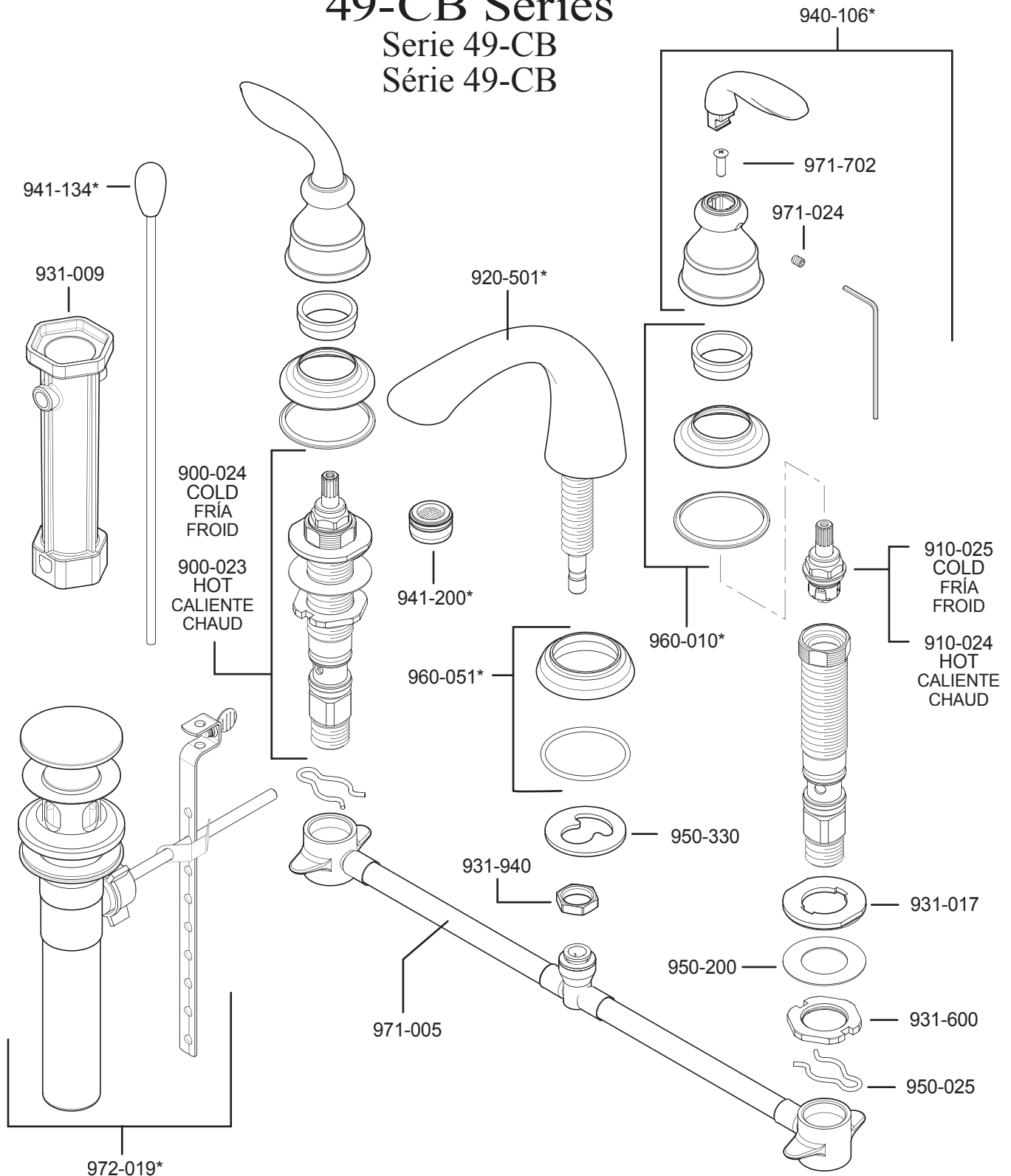
For Toll-Free Pfauet information call
1-800-PFAUCET (1-800-732-8238)
or visit www.pricepfister.com

- Installation Support
- Care and Warranty Information

Price Pfister
Pf Pfreshest Ideas in Pfauets.

49-CB Series

Serie 49-CB
Série 49-CB



	English	Español	Français
*	Letter Designates Finish	La Letra Indica el Terminado	La Lettre Designe La Fini
A	Polished Chrome	Cromo Pulido	Chromé Poli
J	Brushed Nickel PVD	Niquel Cepillado PVD	Niquel Brossé PVD

DEPARTMENTAL

Price Pfister®

Pf Pfreshet Ideas in Pf faucets.
19701 DaVinci
Lake Forest, CA 92610
Phone: 1-800-Pfaucet
www.pricepfister.com

BLACK & DECKER COMPANY