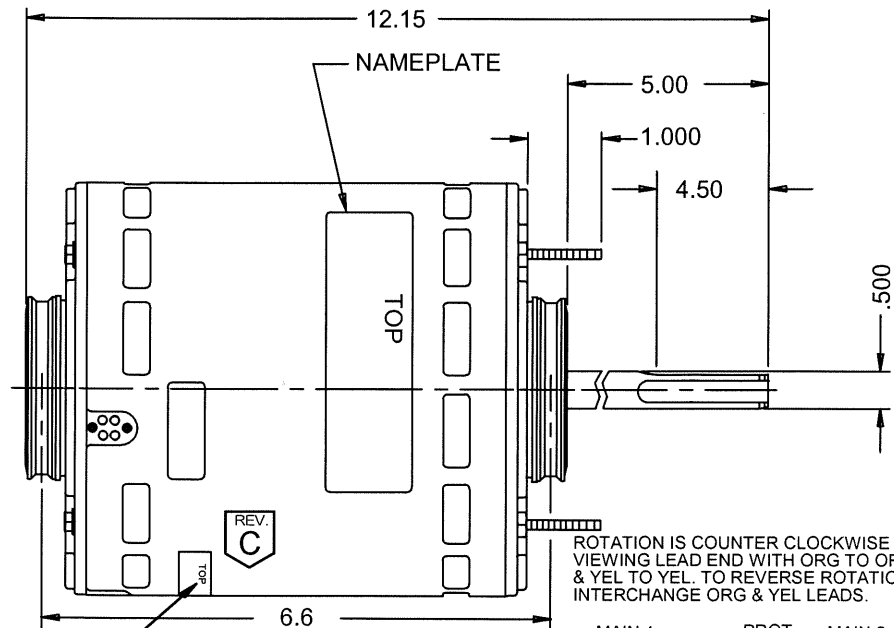
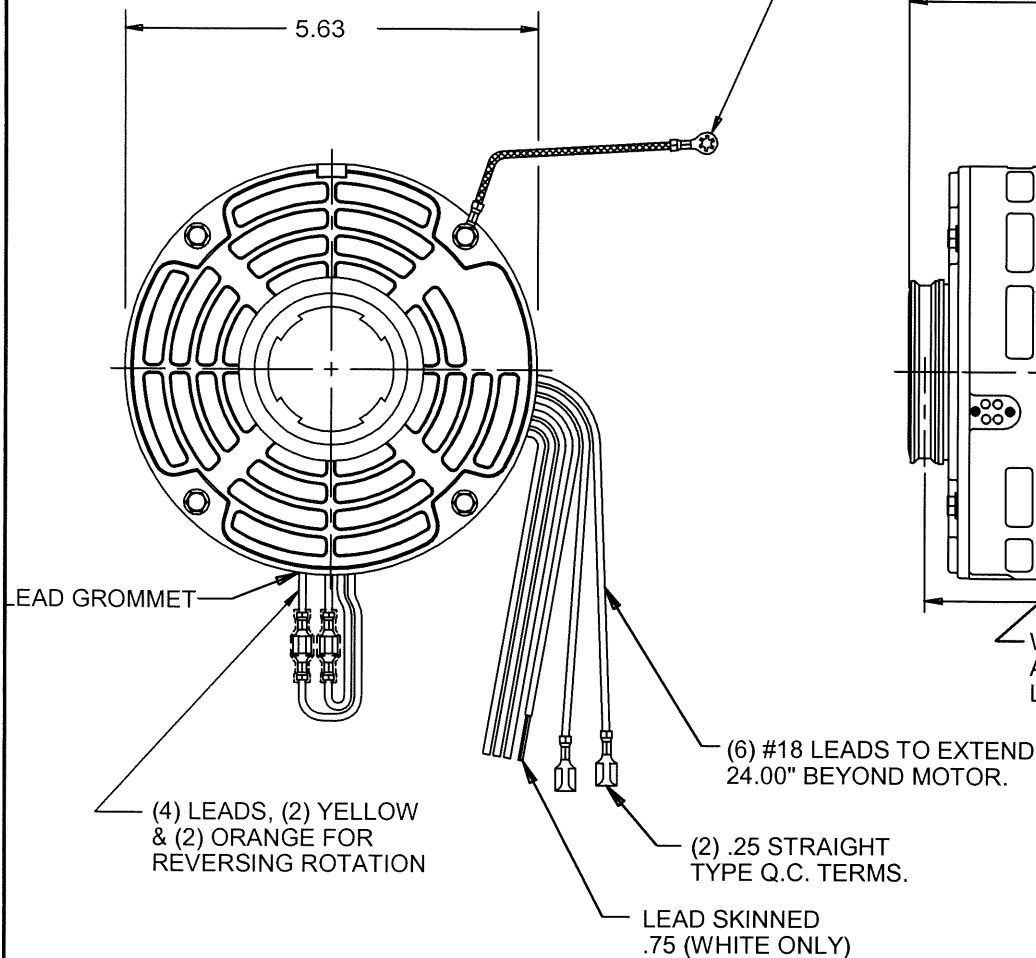


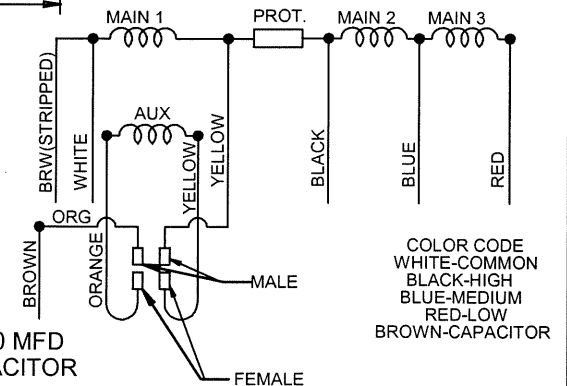
REV.  
C

#16 GRN/YEL GROUND LEAD TO BE 12.00 BETWEEN CENTERS OF TERMS. TERM. TO FIT #10 SCREW.




WARNING LABEL TO BE ADJACENT TO REVERSING LEADS

ROTATION IS COUNTER CLOCKWISE VIEWING LEAD END WITH ORG TO ORG & YEL TO YEL. TO REVERSE ROTATION INTERCHANGE ORG & YEL LEADS.



USE WITH 20.0 MFD 370-VAC CAPACITOR

© EMERSON ELECTRIC CO. 11/29/2007

| MODEL         |     | REF.                                    | CUSTOMER | HP.               | VOLTS   | AMPS   | HZ. | R.P.M.       | ROTATION         | CUST. PT. NO.   |          |      |
|---------------|-----|---|----------|-------------------|---------|--|-----|--------------|------------------|---|----------|------|
| K55HXTAK-8137 |     |   | STANDARD | 1                 | 208-230 | 5.6  | 60  | 1075 / 3 SPD | CCW LEAD END REV | 8907  |          |      |
| SHEET NUMBER  | REV | REVISION RECORD FOR: ECO 236464         |          |                   |         | INFORMATION DISCLOSED ON THIS DOCUMENT IS CONSIDERED PROPRIETARY AND SHALL NOT BE REPRODUCED OR DISCLOSED WITHOUT WRIT- TEN CONSENT OF EMERSON ELECTRIC COMPANY. |     |              |                  | <br><b>EMERSON</b><br>Motor Technologies |          |      |
| 1 OF 1        | C   | ADDED WARNING LABEL FOR REVERSING LEADS |          |                   |         |  |     |              |                  |   |          |      |
|               |     | GROUND LEAD USED TO BE GREEN            |          |                   |         |  |     |              |                  |   |          |      |
|               |     |   |          |                   |         |  |     |              |                  |   |          |      |
| REVISION DATE |     |   |          |                   |         | ALL DIMENSIONS ARE FOR REFERENCE ONLY UNLESS TOLERANCE IS GIVEN.   |     |              |                  |   |          |      |
| 11-29-07      |     |   |          |                   |         |  |     |              |                  |   |          |      |
| ISSUED BY     |     | REVIEWED BY                             |          | ENGINEER APPROVED |         | TITLE  |     |              |                  | CODE  | ITEM NO. | SIZE |
| R. MARTINEZ   |     | M. CAMPA                                |          | J. I. SALAZAR     |         | ASSEMBLED VIEW   |     |              |                  | V01   | 724017   | A    |