

BA-100H/150H

1/2" - 3/4"

**BRONZE BALL VALVE, HOSE END,
DUST CAP and CHAIN
TWO-PIECE, FULL PORT
THREADED x 3/4" HOSE END (BA100H)
SOLDER x 3/4" HOSE END (BA150H)
BLOW-OUT PROOF STEM**

MSS SP-110

DIMENSIONS

	UNITS	1/2"	3/4"
		DN 15	DN 20
Ø A	INCHES	0.50	0.76
	mm	12.7	19.3
B (BA-100)	INCHES	2.70	2.90
	mm	69	74
B' (BA-150)	INCHES	2.55	3.05
	mm	65	78
C (BA-100)	INCHES	1.10	1.30
	mm	28	33
C' (BA-150)	INCHES	1.10	1.45
	mm	28	37
D	INCHES	1.88	2.14
	mm	48	54
E	INCHES	3.81	4.62
	mm	97	117
F	THREADED INLET	NPT	NPT
Cv		13	30

Note: DN (Diameter Nominal) =
Metric equivalent size.

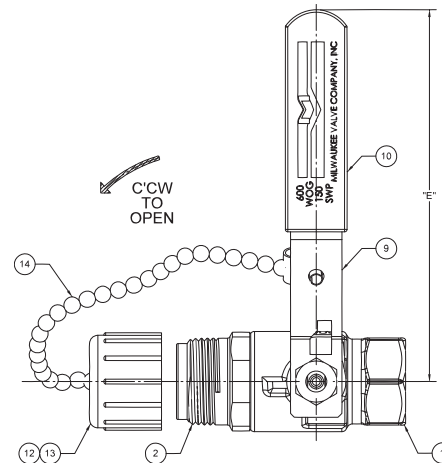
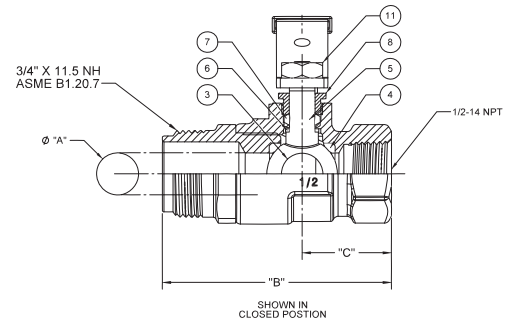
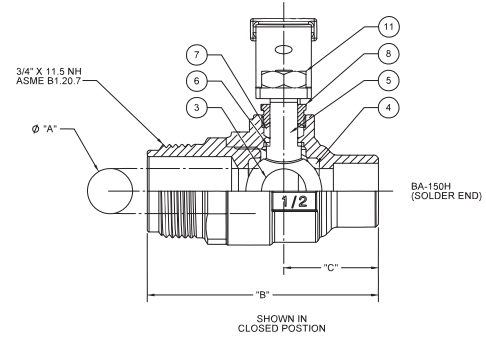
Rev. 14

Do not pressurize cap.

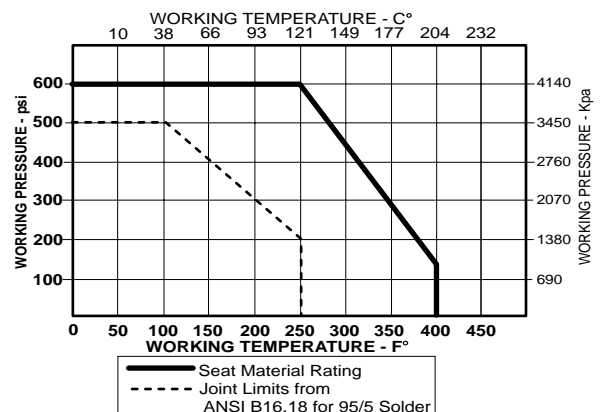
MATERIALS LIST

ITEM	DESCRIPTION	MATERIAL	ATM SPEC.
1	BODY	BRONZE	B584
2	TAILPIECE	BRASS	B16
3	BALL	BRASS, CHROME PLATED	B16
4	SEAT	RPTFE, 15% GLASS FILLED	
5	STEM	BRASS	B16
6	THRUST WASHER	RPTFE, 25% GLASS FILLED	
7	PACKING	PTFE	
8	PACKING NUT	BRASS	B16
9	HANDLE	STEEL, ZINC PLATED	
10	HANDLE GRIP	VINYL	
11	HANDLE NUT	STEEL, ZINC PLATED	
12	DUST CAP	POLYPROPYLENE	
13	GASKET	EPDM	
14	CHAIN	BRASS BEAD	

NOTE: Pressure / Temperature ratings shown are for valve only. Hose side pressure and temperature limit is based on connected hose and is the users responsibility.



PRESSURE - TEMPERATURE DATA (See Note)



The information presented on this sheet is correct at the time of publication. Milwaukee Valve reserves the right to change design, and/or material specifications without notice. For the Installation, Operation and Maintenance Manual (IOM) see the engineering section on our website. For the most current information access www.milwaukeevalve.com

