

LIMITED WARRANTY

Bradford, a division of Dixon Valve and Coupling Company, (herein called "Bradford") warrants the products described herein, and manufactured by Bradford to be free from defects in material and workmanship for a period of one (1) year from date of shipment by Bradford under normal use and service. It's sole obligation under this warranty being limited to repairing or replacing, as hereinafter provided, at its option any product found to Bradford's satisfaction to be defective upon examination by it, provided that such product shall be returned for inspection to Bradford within three (3) months after discovery of the defect. The repair or replacement of defective products will be made without charge for parts or labor. This warranty shall not apply to: (a) parts or products not manufactured exclusively for Bradford, the warranty of such items being limited to the actual warranty extended to Bradford by its supplier; (b) any product that has been subject to abuse, negligence, accident, or misapplication; (c) any product altered or repaired by others than Bradford; and (d) to normal maintenance services and the replacement of service items (such as gaskets and seats) made in connection with such services. To the extent permitted by State law, this limited warranty shall extend only to the buyer and any other person reasonably expected to use or consume the goods who is injured in person by any breach of the warranty. No action may be brought against Bradford for an alleged breach of warranty unless such action is instituted within one (1) year from the date the cause of action accrues. This limited warranty shall be construed and enforced to the fullest extent allowable by applicable State law.

OTHER THAN THE OBLIGATION OF BRADFORD SET FORTH HEREIN, BRADFORD DISCLAIMS ALL WARRANTIES, EXPRESS OR IMPLIED, INCLUDING BUT NOT LIMITED TO ANY IMPLIED WARRANTIES OF MERCHANTABILITY OR FITNESS FOR A PARTICULAR PURPOSE, AND ANY OTHER OBLIGATION OR LIABILITY. THE FOREGOING CONSTITUTES BRADFORD'S SOLE OBLIGATION WITH RESPECT TO DAMAGES, WHETHER DIRECT, INCIDENTAL OR CONSEQUENTIAL, RESULTING FROM THE USE OR PERFORMANCE OF THE PRODUCT.

Some products and sizes may be discontinued when stock is depleted, or may require a minimum quantity for ordering.

NOTE: Reasonable care has been taken in preparing this catalog. Bradford, a division of Dixon Valve & Coupling Company, reserves the right to make corrections and any dimensional changes.

For the right tube O.D. fitting

Tube O.D.



Your applications demand quality, reliability, and quick delivery. That's why businesses from dairy, food and beverage to pharmaceutical and cosmetics have trusted Bradford tube O.D. fittings since 1986.

Bradford tube O.D. fittings are manufactured to very high tolerances. Some fittings are manufactured using a hydro-forming method, which makes a more unified part that is easier to weld and polish. This manufacturing method allows us to supply our customers with a superior quality fitting regardless of the application.

Bradford provides tube O.D. fittings in a wide variety of sizes and configurations; they can be ordered unpolished, or polished to any finish you need. This combination of versatility and quality is unsurpassed in our industry.

Bradford's quality tube O.D. fittings are available from our thirteen distribution centers - so we can ship the parts you need within twenty-four hours.



connect with Bradford

Part Number

Descriptions

- 2 = Elbow (unpolished, polished, clamp, etc. 90, 45, U-bend etc)
- 7 = Tee (unpolished, polished, clamp, reducing, etc.)
- 9 = Cross (unpolished, polished, clamp, reducing, etc.)
- 14 = Ferrule male (short, long, auto weld, tank, rool-on, hose adapter, stub ends)
- 28 = Y or Lateral (unpolished, polished, clamp, reducing, etc.)
- 31 = Concentric Reducer (unpolished, polished, clamp, etc.)
- 32 = Eccentric Reducer (unpolished, polished, clamp, etc.)

Standard Tolerances of Bradford Fittings

Nominal O.D. Size (inches)	O.D. Tolerances	Center to Face Tolerance	Perpendicularity of Face to Tangent	Squareness of Elbow Bend or Tee Branch
1/2", 3/4"	± .005	± .030	.005	90 ± 1°
1"	± .005	± .030	.008	90 ± 1°
1 1/2"	± .008	± .030	.008	90 ± 1°
2"	± .008	± .030	.008	90 ± 1°
2 1/2"	± .010	± .047	.010	90 ± 1°
3"	± .010	± .047	.016	90 ± 1°
4"	± .015	± .047	.016	90 ± 1°
6"	± .030	± .062	.030	90 ± 1°

Note: 1/2" through 3" are 16 gauge (.065" nominal wall)
 4" is 14 gauge (.083 nominal wall)
 6" is 12 gauge (.109 nominal wall)

Product

Specifications

Size range:

- 1/2" - 12" O.D. (50-1200)

Materials:

- G = 304
- R = 316L

Finish:

- No. 1 - unpolished

Other finishes available. Some items may not be in stock. Call for price and availability. If your part is not listed, call us; we may still be able to get it for you.

Tube O.D.

Ordering Instructions

Specify:

- quantity
- size 50-1200 (1/2" - 12")
- product description and Bradford part number
- material type - G = 304, R = 316L
- polish requirements
- ship to address

Tube O.D. Connection



— tube O.D. butt weld



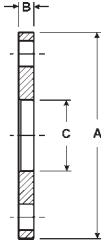
— tube O.D. butt weld

Ordering Example:

Qty.	Description	Part No.
5 ea.	2" Unpolished 90° elbow	B2WCL-G200U

Flanges

Tube Flanges - B38SL



Tube O.D.	Dimensions			No. & Dia. Bolt Holes	Bolt Circle	304	316L
	A	B	C			Part Number	Part Number
1"	4.250	.375	1.063	4/.625	3.125	B38SL-G100	B38SL-R100
1½"	5.000	.375	1.563	4/.625	3.875	B38SL-G150	B38SL-R150
2"	6.000	.437	2.063	4/.750	4.750	B38SL-G200	B38SL-R200
2½"	7.000	.437	2.563	4/.750	5.500	B38SL-G250	B38SL-R250
3"	7.500	.500	3.063	4/.750	6.000	B38SL-G300	B38SL-R300
4"	9.000	.562	4.063	8/.750	7.500	B38SL-G400	B38SL-R400
6"	11.000	.562	6.063	8/.875	9.500	B38SL-G600	B38SL-R600
8"	13.500	.687	8.063	8/.875	11.750	B38SL-G800	B38SL-R800
10"	16.000	.687	10.063	12/1.00	14.125	B38SL-G1000	B38SL-R1000

Tube O.D.

Flanges

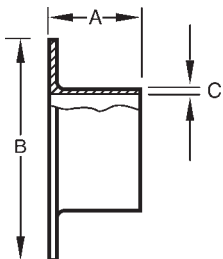
New! Weld Neck Flanges- B38W



Tube O.D.	Dimensions			304	316L
	A	B	C	Part Number	Part Number
1"	1.000	.375	4.250	B38W-G100	B38W-R100
1½"	1.500	.375	5.000	B38W-G150	B38W-R150
2"	2.000	.500	6.000	B38W-G200	B38W-R200
2½"	2.500	.500	7.000	B38W-G250	B38W-R250
3"	3.000	.500	7.500	B38W-G300	B38W-R300
4"	4.000	.500	9.000	B38W-G400	B38W-R400
6"	6.000	.500	11.000	B38W-G600	B38W-R600
8"	8.000	.500	13.000	B38W-G800	B38W-R800

Stub Fittings

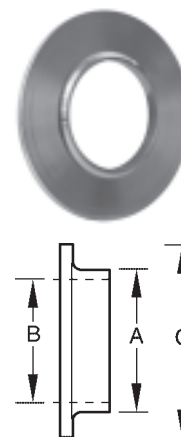
New! Stub Ends - B14VB



Tube O.D.	Dimensions			316L Part Number
	A	B	C	
1"	1.625	2.000	.130	B14VB-R100
1½"	1.750	2.875	.130	B14VB-R150
2"	1.500	3.625	.130	B14VB-R200
2½"	2.000	4.125	.130	B14VB-R250
3"	2.250	5.000	.166	B14VB-R300
4"	2.625	6.187	.166	B14VB-R400
6"	3.000	8.500	.218	B14VB-R600
8"	3.000	10.625	.218	B14VB-R800
10"	3.500	12.450	.268	B14VB-R1000

Stub Bases- *B14UB* **New!**

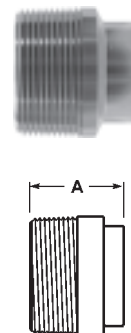
Tube O.D.	Dimensions			316L	
	A	B	C	Part Number	
1"	1.000	.870	2.000	B14UB-R100	
1½"	1.500	1.370	2.875	B14UB-R150	
2"	2.000	1.870	3.625	B14UB-R200	
2½"	2.500	2.370	4.125	B14UB-R250	
3"	3.000	2.870	5.000	B14UB-R300	
4"	4.000	3.834	6.187	B14UB-R400	
6"	6.000	5.782	8.500	B14UB-R600	
8"	8.000	7.782	10.625	B14UB-R800	



Adapters

Weld End x Male NPT - *B19WB*

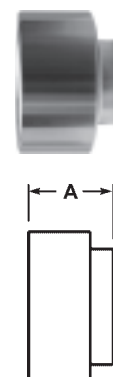
Tube O.D.	Dimension A	Nominal Wall	316L	
			304 Part Number	Part Number
½"	1.625	.065	--	B19WB-R50
¾"	1.625	.065	--	B19WB-R75
1"	1.750	.065	B19WB-G100	B19WB-R100
1½"	1.750	.065	B19WB-G150	B19WB-R150
2"	1.812	.065	B19WB-G200	B19WB-R200
2½"	2.312	.065	B19WB-G250	B19WB-R250
3"	2.500	.065	B19WB-G300	B19WB-R300
4"	2.562	.083	B19WB-G400	B19WB-R400
6"	3.000	.109	B19WB-G600	B19WB-R600



Tube O.D.

Weld End x Female NPT - *B22WB*

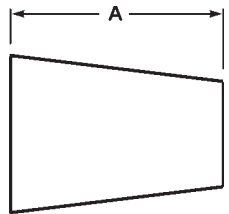
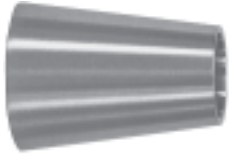
Tube O.D.	Dimension A	Nominal Wall	316L	
			304 Part Number	Part Number
½"	1.250	.065	--	B22WB-R50
¾"	1.625	.065	--	B22WB-R75
1"	1.125	.065	B22WB-G100	B22WB-R100
1½"	1.437	.065	B22WB-G150	B22WB-R150
2"	1.437	.065	B22WB-G200	B22WB-R200
2½"	1.625	.065	B22WB-G250	B22WB-R250
3"	1.812	.065	B22WB-G300	B22WB-R300
4"	2.000	.083	B22WB-G400	B22WB-R400



Reducers

Buttweld Concentric Reducers - B31W

Tube O.D.	Dimension A	Nominal Wall	304 Part Number	316L Part Number
¾" x ½"	1.000	.065	--	B31W-R7550U
1" x ½"	2.000	.065	--	B31W-R10050U
1½" x ½"	4.000	.065	--	B31W-R15050U
2" x ½"	6.000	.065	--	B31W-R20050U
1" x ¾"	1.000	.065	--	B31W-R10075U
1½" x ¾"	3.000	.065	--	B31W-R15075U
2" x ¾"	5.000	.065	--	B31W-R20075U
1½" x 1"	2.000	.065	B31W-G150100U	B31W-R150100U
2" x 1"	4.000	.065	B31W-G200100U	B31W-R200100U
2" x 1½"	2.000	.065	B31W-G200150U	B31W-R200150U
2½" x 1½"	4.000	.065	B31W-G250150U	B31W-R250150U
2½" x 2"	2.000	.065	B31W-G250200U	B31W-R250200U
3" x 1"	8.000	.065	B31W-G300100U	B31W-R300100U
3" x 1½"	6.000	.065	B31W-G300150U	B31W-R300150U
3" x 2"	4.000	.065	B31W-G300200U	B31W-R300200U
3" x 2½"	2.000	.065	B31W-G300250U	B31W-R300250U
4" x 1½"	10.000	.083	B31W-G400150U	B31W-R400150U
4" x 2"	8.000	.083	B31W-G400200U	B31W-R400200U
4" x 2½"	6.000	.083	B31W-G400250U	B31W-R400250U
4" x 3"	4.000	.083	B31W-G400300U	B31W-R400300U
6" x 2"	5.500	.109	B31W-G600200U	B31W-R600200U
6" x 3"	5.500	.109	B31W-G600300U	B31W-R600300U
6" x 4"	5.500	.109	B31W-G600400U	B31W-R600400U
8" x 4"	6.000	.120	B31W-G800400U	B31W-R800400U
8" x 6"	6.000	.120	B31W-G800600U	B31W-R800600U
10" x 6"	7.000	.109	B31W-G1000600U	B31W-R1000600U
10" x 8"	7.000	.109	B31W-G1000800U	B31W-R1000800U
12" x 8"	8.000	.120	B31W-G1200800U	B31W-R1200800U
12" x 10"	8.000	.120	B31W-G12001000U	B31W-R12001000U

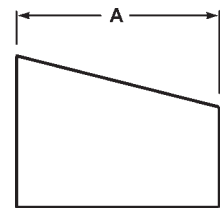
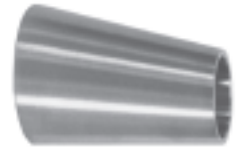


Tube O.D.

Reducers

Buttweld Eccentric Reducers - B32W

Tube O.D.	Dimension A	Nominal Wall	304 Part Number	316L Part Number
¾" x ½"	1.000	.065	--	B32W-R7550U
1" x ½"	2.000	.065	--	B32W-R10050U
1½" x ½"	4.000	.065	--	B32W-R15050U
2" x ½"	6.000	.065	--	B32W-R20050U
1" x ¾"	1.000	.065	--	B32W-R10075U
1½" x ¾"	3.000	.065	--	B32W-R15075U
2" x ¾"	5.000	.065	--	B32W-R20075U
1½" x 1"	2.000	.065	B32W-G150100U	B32W-R150100U
2" x 1"	4.000	.065	B32W-G200100U	B32W-R200100U
2" x 1½"	2.000	.065	B32W-G200150U	B32W-R200150U
2½" x 1½"	4.000	.065	B32W-G250150U	B32W-R250150U
2½" x 2"	2.000	.065	B32W-G250200U	B32W-R250200U
3" x 1"	8.000	.065	B32W-G300100U	B32W-R300100U
3" x 1½"	6.000	.065	B32W-G300150U	B32W-R300150U
3" x 2"	4.000	.065	B32W-G300200U	B32W-R300200U
3" x 2½"	2.000	.065	B32W-G300250U	B32W-R300250U
4" x 1½"	10.000	.083	B32W-G400150U	B32W-R400150U
4" x 2"	8.000	.083	B32W-G400200U	B32W-R400200U
4" x 2½"	6.000	.083	B32W-G400250U	B32W-R400250U
4" x 3"	4.000	.083	B32W-G400300U	B32W-R400300U
6" x 2"	5.500	.109	B32W-G600200U	B32W-R600200U
6" x 3"	5.500	.109	B32W-G600300U	B32W-R600300U
6" x 4"	5.500	.109	B32W-G600400U	B32W-R600400U
8" x 4"	6.000	.120	B32W-G800400U	B32W-R800400U
8" x 6"	6.000	.120	B32W-G800600U	B32W-R800600U
10" x 6"	7.000	.109	B32W-G1000600U	B32W-R1000600U
10" x 8"	7.000	.109	B32W-G1000800U	B32W-R1000800U
12" x 8"	8.000	.120	B32W-G1200800U	B32W-R1200800U
12" x 10"	8.000	.120	B32W-G12001000U	B32W-R12001000U

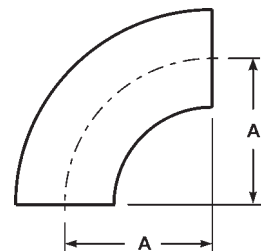


Tube O.D.

Elbows

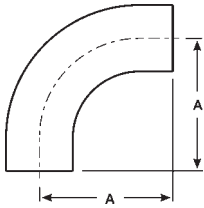
90° Buttweld Elbows - B2WCL

Tube O.D.	Dimension A	Nominal Wall	304 Part Number	316L Part Number
½"	1.250	.065	--	B2WCL-R50U
¾"	1.125	.065	--	B2WCL-R75U
1"	1.500	.065	B2WCL-G100U	B2WCL-R100U
1½"	2.250	.065	B2WCL-G150U	B2WCL-R150U
2"	3.000	.065	B2WCL-G200U	B2WCL-R200U
2½"	3.750	.065	B2WCL-G250U	B2WCL-R250U
3"	4.500	.065	B2WCL-G300U	B2WCL-R300U
4"	6.000	.083	B2WCL-G400U	B2WCL-R400U
6"	9.000	.109	B2WCL-G600U	B2WCL-R600U
8"	12.000	.120	B2WCL-G800U	B2WCL-R800U
10"	15.000	.109	B2WCL-G1000U	B2WCL-R1000U
12"	18.000	.120	B2WCL-G1200U	B2WCL-R1200U



Elbows

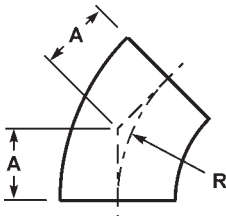
90° Buttweld Elbows with Tangents - *B2S*



Tube O.D.	Dimension A	Nominal Wall	304 Part Number	316L Part Number
1/2"	3.000	.065	--	B2S-R50U
3/4"	3.000	.065	--	B2S-R75U
1"	2.062	.065	B2S-G100U	B2S-R100U
1 1/2"	2.937	.065	B2S-G150U	B2S-R150U
2"	4.062	.065	B2S-G200U	B2S-R200U
2 1/2"	5.187	.065	B2S-G250U	B2S-R250U
3"	6.312	.065	B2S-G300U	B2S-R300U
4"	8.312	.083	B2S-G400U	B2S-R400U

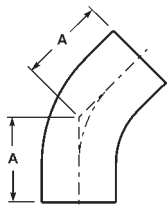
Tube O.D.

45° Buttweld Elbows - *B2WK*



Tube O.D.	Dimensions		Nominal Wall	304 Part Number	316L Part Number
	A	R			
1/2"	.518	1.250	.065	--	B2WK-R50U
3/4"	.466	1.125	.065	--	B2WK-R75U
1"	.625	1.500	.065	B2WK-G100U	B2WK-R100U
1 1/2"	.937	2.250	.065	B2WK-G150U	B2WK-R150U
2"	1.250	3.000	.065	B2WK-G200U	B2WK-R200U
2 1/2"	1.562	3.750	.065	B2WK-G250U	B2WK-R250U
3"	1.875	4.500	.065	B2WK-G300U	B2WK-R300U
4"	2.500	6.000	.083	B2WK-G400U	B2WK-R400U
6"	3.750	9.000	.109	B2WK-G600U	B2WK-R600U
8"	5.000	12.000	.120	B2WK-G800U	B2WK-R800U
10"	6.250	15.000	.109	B2WK-G1000U	B2WK-R1000U
12"	7.500	18.000	.120	B2WK-G1200U	B2WK-R1200U

45° Buttweld Elbows with Tangents - *B2KS*

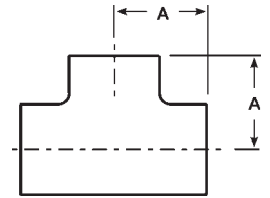


Tube O.D.	Dimension A	Nominal Wall	304 Part Number	316L Part Number
1/2"	2.250	.065	--	B2KS-R50U
3/4"	2.250	.065	--	B2KS-R75U
1"	1.188	.065	B2KS-G100U	B2KS-R100U
1 1/2"	1.625	.065	B2KS-G150U	B2KS-R150U
2"	2.312	.065	B2KS-G200U	B2KS-R200U
2 1/2"	3.000	.065	B2KS-G250U	B2KS-R250U
3"	3.688	.065	B2KS-G300U	B2KS-R300U
4"	4.812	.083	B2KS-G400U	B2KS-R400U

Tees

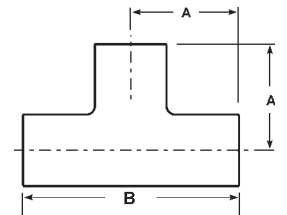
Buttweld Short Tees - B7WWW

Tube O.D.	Dimension A	Nominal Wall	304 Part Number	316L Part Number
1"	1.125	.065	B7WWW-G100U	B7WWW-R100U
1½"	1.656	.065	B7WWW-G150U	B7WWW-R150U
2"	2.062	.065	B7WWW-G200U	B7WWW-R200U
2½"	2.344	.065	B7WWW-G250U	B7WWW-R250U
3"	2.594	.065	B7WWW-G300U	B7WWW-R300U
4"	3.438	.083	B7WWW-G400U	B7WWW-R400U



Buttweld Long Tees - B7W

Tube O.D.	Dimensions		Nominal Wall	304 Part Number	316L Part Number
	A	B			
½"	1.875	3.750	.065	–	B7W-R50U
¾"	2.000	4.000	.065	–	B7W-R75U
1"	1.875	3.750	.065	B7W-G100U	B7W-R100U
1½"	2.250	4.500	.065	B7W-G150U	B7W-R150U
2"	3.000	6.000	.065	B7W-G200U	B7W-R200U
2½"	3.000	6.000	.065	B7W-G250U	B7W-R250U
3"	3.250	6.500	.065	B7W-G300U	B7W-R300U
4"	3.875	7.750	.083	B7W-G400U	B7W-R400U
6"	5.625	11.250	.109	B7W-G600U	B7W-R600U
8"	7.000	14.000	.120	B7W-G800U	B7W-R800U
10"	8.500	17.000	.109	B7W-G1000U	B7W-R1000U
12"	10.000	20.000	.120	B7W-G1200U	B7W-R1200U



Tube O.D.

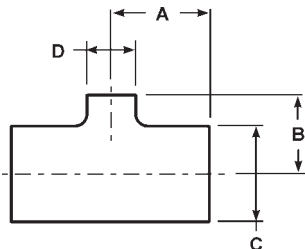
Tees

Buttweld Reducing Tees - B7RWWW

Tube O.D.	Dimensions				Nom. Wall	304 Part Number	316L Part Number
	A	B	C	D			
¾" x ½"	2.000	2.000	.750	.500	.065	--	B7RWWW-R7550U
1" x ½"	2.130	2.130	1.000	.500	.065	--	B7RWWW-R10050U
1½" x ½"	2.380	2.380	1.500	.500	.065	--	B7RWWW-R15050U
2" x ½"	2.880	2.630	2.000	.500	.065	--	B7RWWW-R20050U
1" x ¾"	2.130	2.130	1.000	.750	.065	--	B7RWWW-R10075U
1½" x ¾"	2.380	2.380	1.500	.750	.065	--	B7RWWW-R15075U
2" x ¾"	2.880	2.630	2.000	.750	.065	--	B7RWWW-R20050U
1½" x 1"	1.656	1.375	1.500	1.000	.065	B7RWWW-G150100U	B7RWWW-R150100U
2" x 1"	2.062	1.625	2.000	1.000	.065	B7RWWW-G200100U	B7RWWW-R200100U
2" x 1½"	2.062	1.906	2.000	1.500	.065	B7RWWW-G200150U	B7RWWW-R200150U
2½" x 1½"	2.344	2.156	2.500	1.500	.065	B7RWWW-G250150U	B7RWWW-R250150U
2½" x 2"	2.344	2.312	2.500	2.000	.065	B7RWWW-G250200U	B7RWWW-R250200U
3" x 1½"	2.594	2.406	3.000	1.500	.065	B7RWWW-G300150U	B7RWWW-R300150U
3" x 2"	2.594	2.561	3.000	2.000	.065	B7RWWW-G300200U	B7RWWW-R300200U
3" x 2½"	2.594	2.594	3.000	2.500	.065	B7RWWW-G300250U	B7RWWW-R300250U
4" x 1½"	3.438	2.906	4.000	1.500	.083	B7RWWW-G400150U	B7RWWW-R400150U
4" x 2"	3.438	3.062	4.000	2.000	.083	B7RWWW-G400200U	B7RWWW-R400200U
4" x 2½"	3.438	3.094	4.000	2.500	.083	B7RWWW-G400250U	B7RWWW-R400250U
4" x 3"	3.438	3.156	4.000	3.000	.083	B7RWWW-G400300U	B7RWWW-R400300U
6" x 2"	5.625	4.500	6.000	2.000	.109	B7RWWW-G600200U	B7RWWW-R600200U
6" x 3"	5.625	4.875	6.000	3.000	.109	B7RWWW-G600300U	B7RWWW-R600300U
6" x 4"	5.625	5.125	6.000	4.000	.109	B7RWWW-G600400U	B7RWWW-R600400U
8" x 4"	7.000	6.125	8.000	4.000	.120	B7RWWW-G800400U	B7RWWW-R800400U
8" x 6"	7.000	6.625	8.000	6.000	.120	B7RWWW-G800600U	B7RWWW-R800600U
10" x 6"	8.500	7.625	10.000	6.000	.109	B7RWWWG1000600U	B7RWWWWR1000600U
10" x 8"	8.500	8.000	10.000	8.000	.109	B7RWWWG1000800U	B7RWWWWR1000800U
12" x 8"	10.000	9.000	12.000	8.000	.120	B7RWWWG1200800U	B7RWWWWR1200800U
12" x 10"	10.000	9.500	12.000	10.000	.120	B7RWWWG120010U	B7RWWWWR120010U



Tube O.D.



Caps

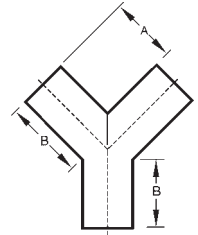
Buttweld End Caps - B16W

Tube O.D.	Dimension A	304 Part Number	316L Part Number
½"	.250	--	B16W-R50
¾"	.312	--	B16W-R75
1"	.375	B16W-G100	B16W-R100
1½"	.562	B16W-G150	B16W-R150
2"	.750	B16W-G200	B16W-R200
2½"	1.000	B16W-G250	B16W-R250
3"	1.250	B16W-G300	B16W-R300
4"	1.500	B16W-G400	B16W-R400
6"	2.000	B16W-G600	B16W-R600
8"	2.500	B16W-G800	B16W-R800
10"	3.000	B16W-G1000	B16W-R1000
12"	3.000	B16W-G1200	B16W-R1200



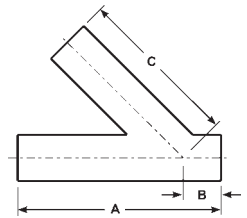
Miscellaneous Configurations

Buttweld Y - B28W



Tube O.D.	Dimensions		Nominal Wall	Part Number
	A	B		
1"	2.000	2.438	.065	B28W-R100U
1½"	2.000	2.438	.065	B28W-R150U
2"	2.625	3.250	.065	B28W-R200U
2½"	3.370	4.125	.065	B28W-R250U
3"	4.000	4.875	.065	B28W-R300U
4"	5.375	5.375	.083	B28W-R400U

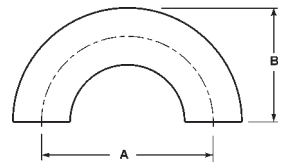
Buttweld Laterals- B28WA



Tube O.D.

Tube O.D.	Dimensions			Part Number
	A	B	C	
1"	6.000	1.000	5.000	B28WA-R100U
1½"	7.375	1.930	6.930	B28WA-R150U
2"	8.750	1.625	7.125	B28WA-R200U
2½"	10.000	1.500	8.500	B28WA-R250U
3"	10.750	1.875	8.875	B28WA-R300U
4"	12.812	2.015	10.750	B28WA-R400U
6"	18.000	3.000	14.500	B28WA-R600U

Buttweld 180° Return Bends - B2WUL



Tube O.D.	Dimensions		Nominal Wall	Part Number
	A	B		
1"	3.000	2.000	.065	B2WUL-R100U
1½"	4.500	3.000	.065	B2WUL-R150U
2"	6.000	4.000	.065	B2WUL-R200U
2½"	7.500	5.000	.065	B2WUL-R250U
3"	9.000	6.000	.065	B2WUL-R300U
4"	12.000	8.000	.083	B2WUL-R400U

Unpolished Tubing New!



- Tubing available in 20' lengths only
- Surcharges change regularly
- Call for full freight allowance
- See pages 204 and 205 for A269 tubing specifications

Size	Quantity	Part Number	
		304	316L
½"	300'	--	A269-R50
¾"	300'	--	A269-R75
1"	160'	A269-G100U	A269-R100U
1½"	300'	A269-G150U	A269-R150U
2"	300'	A269-G200U	A269-R200U
2½"	200'	A269-G250U	A269-R250U
3"	200'	A269-G300U	A269-R300U
4"	100'	A269-G400U	A269-R400U
6"	--	A269-G600U *	A269-R600U *
8"	--	A269-G800U *	A269-R800U *
10"	--	A269-G1000U *	A269-R1000U *

* No minimum carton quantity