

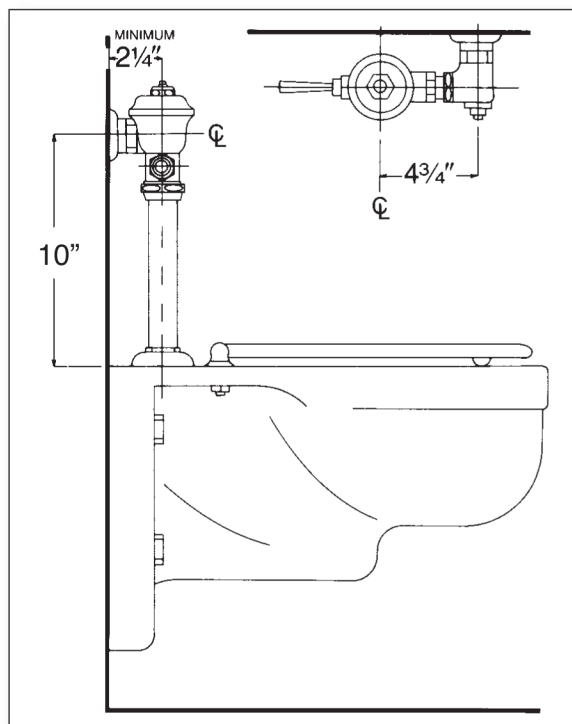
**P**olished chrome plated flush valve, chloramine resistant diaphragm, 1.6 gallons per flush, externally adjustable, with 1" vandle resistant capped screw-drive angle stop with back-check, renewable main valve seat, metal "Rubberflex" oscillating handle, "Turn-to-Silence" equipment, with "Kwikfit" threaded union tailpiece, vacuum breaker, wall flange, spud nut and spud flange for 1½" top spud.

#### Variations

- ☐ G – Bumper on angle stop (for seat without cover)
- ☐ O – Flush connection for 1¼" spud
- ☐ T36 – Solid ring wall support for flush connection
- ☐ T42 – Sweat adapter kit for stop
- ☐ T46 – Split ring wall support for flush connection

#### Remarks

**\*** *For use with 1.6 gallons water saver water closet*



P.O. Box 411 • Charlottesville • VA • 22902 • USA  
 Phone: (434) 296-0166 • Fax (434) 977-3596  
 Email: [info@delanyproducts.com](mailto:info@delanyproducts.com)  
 Web: [www.delanyproducts.com](http://www.delanyproducts.com)  
 ©2012

