

SCALE 0.160

PARTS LIST					
ITEM	DESCRIPTION	REQ'D	MATERIAL	A.S.T.M.	ALTERNATE STANDARD
1	OPERATING NUT	1	BRONZE	B-62	ALLOY C83600
2	WIPER RING	1	RUBBER	D-2000	EPDM
3	HOLD DOWN NUT O-RING	1	RUBBER	D-2000	BUNA N
4	HOLD DOWN NUT	1	BRONZE	B-62	ALLOY C83600
5	BONNET O-RING	1	RUBBER	D-2000	BUNA N
6	ANTI-FRICTION WASHER	1	CELCON		GRADE M90-04
7	OIL FILLER PLUG	1	BRASS	B-16	ALLOY 360
8	BONNET	1	CAST IRON	A-126	CLASS B
9	HEX BOLT 1/2x2.250 LG	8	STEEL	A-307	SAE J429 ELECTRO GALV.
10	TOP UPPER BARREL O-RING	1	RUBBER	D-2000	BUNA N
11	UPPER STEM	1	CARBON STEEL	A-576	GR 1144T
12	STEM O-RING	1	RUBBER	D-2000	BUNA N
13	NOZZLE LOCK	3	STAINLESS STEEL	A-276	305 OR 410
14	PUMPER NOZZLE	1	BISMUTH BRASS	B-584	ALLOY C89833
15	PUMPER NOZZLE CAP GASKET	1	RUBBER	D-2000	NEOPRENE
16	PUMPER NOZZLE O-RING	1	RUBBER	D-2000	BUNA N
17	PUMPER NOZZLE CAP	1	CAST IRON	A-126	CLASS B
18	HOSE NOZZLE	2	BISMUTH BRASS	B-584	ALLOY C89833
19	HOSE NOZZLE CAP GASKET	2	RUBBER	D-2000	NEOPRENE
20	HOSE NOZZLE O-RING	2	RUBBER	D-2000	BUNA N
21	HOSE NOZZLE CAP	2	CAST IRON	A-126	CLASS B
22	CAP CHAIN	3	STEEL		ELECTRO GALV.
23	CHAIN HOOK	1	STEEL		ELECTRO GALV.
24	UPPER BARREL	1	CAST IRON	A-126	CLASS B
25	SAFETY STEM COUPLING	1	STAINLESS STEEL	A-890	1.5% SILICON MAX.
26	SAFETY FLANGE BOLT	8	STEEL	A-307	SAE J429 ELECTRO GALV.
27	BOTTOM UPPER BARREL O-RING	1	RUBBER	D-2000	BUNA N
28	SAFETY FLANGE	1	CAST IRON	A-126	CLASS B
29	COTTOR PIN	2	STAINLESS STEEL	A-276	302
30	CLEVIS PIN	2	STAINLESS STEEL	A-276	305
31	LOWER STEM	1	CARBON STEEL	A-576	GRADE 1144T

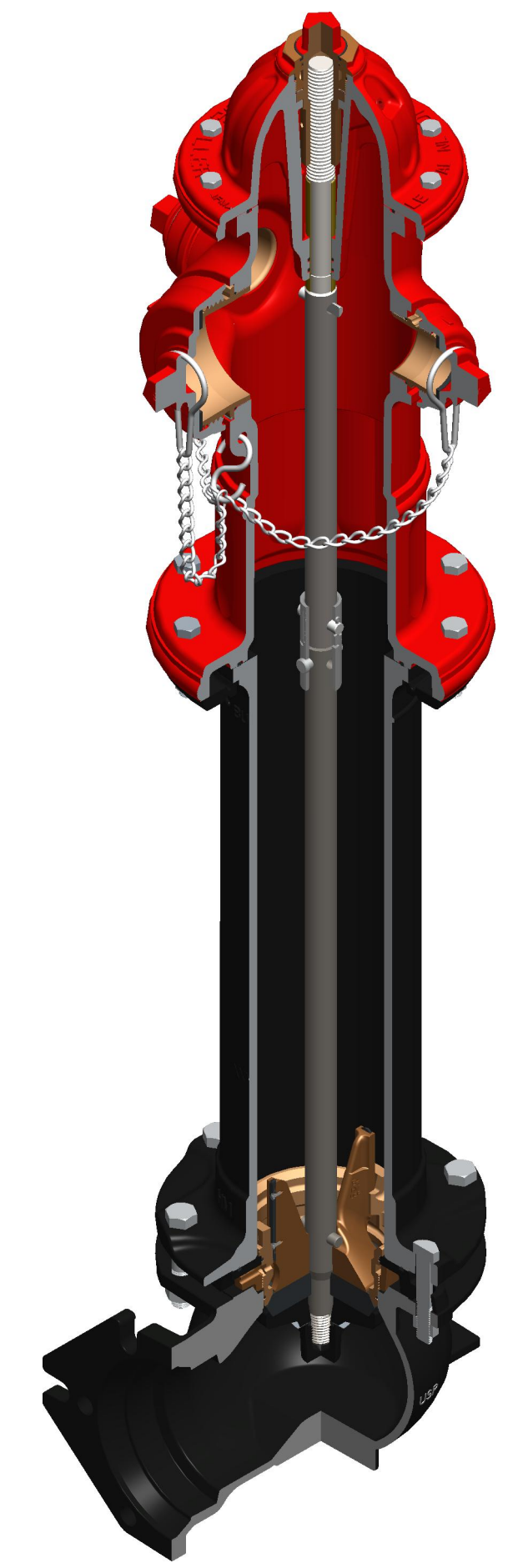
SEE CAT. RECORD FOR RESPECTIVE PARTS OR SUB. ASS'YS

NOTE: SIZE AND STYLE OF OPERATING NUT, SHOE SIZE, AND THREADING OF NOZZLES IS PER CUSTOMER SPECS.

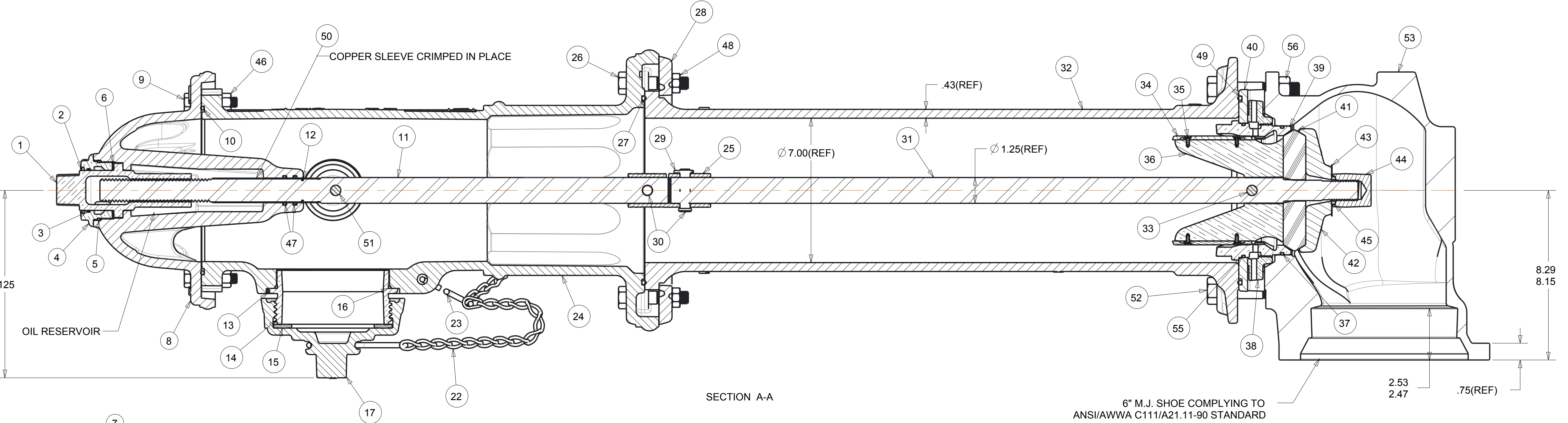
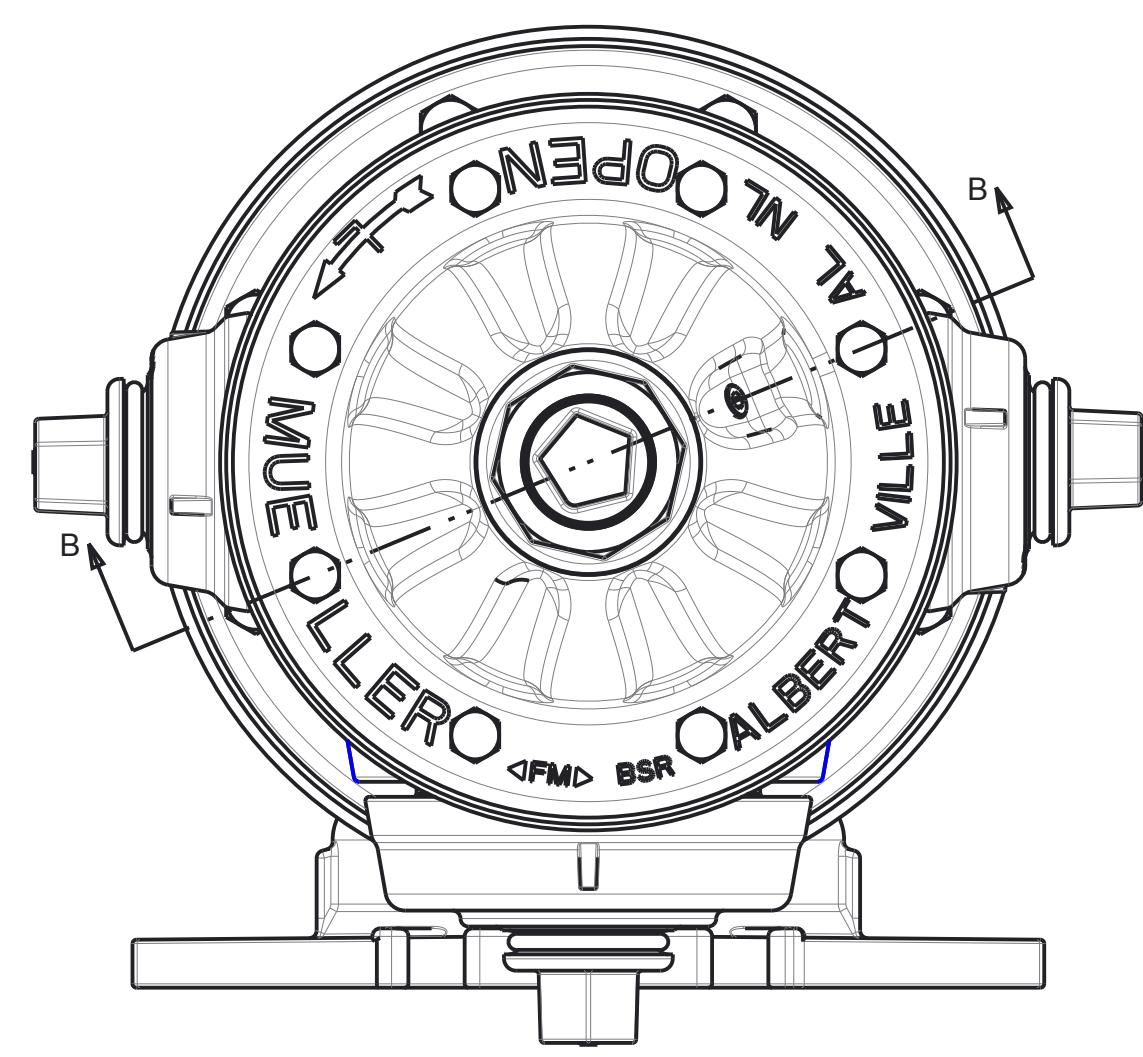
OPEN LEFT APPROXIMATELY 17 1/4 TURNS TO OPEN OP. NUT DIMENSIONS PER CUSTOMER SPECS. STANDARD 1-1/2 PENT

ITEM	DESCRIPTION	REQ'D	MATERIAL	A.S.T.M.	ALTERNATE STANDARD
32	LOWER BARREL	1	CAST IRON	A-126	CLASS B
33	STEM PIN	1	STAINLESS STEEL	A-276	302
34	DRAIN VALVE FACING	2	H.D. POLYETHYLENE		LS 5660-00
35	DRAIN VALVE FACING SCREW	4	STAINLESS STEEL	A-276	302
36	UPPER VALVE PLATE	1	BISMUTH BRASS	B-584	ALLOY C89833
37	BOTTOM SEAT O-RING	1	RUBBER	D-2000	BUNA N
38	DRAIN RING	1	BRONZE	B-62	ALLOY C83600
39	SEAT RING	1	BISMUTH BRASS	B-584	ALLOY C89833
40	DRAIN RING HOUSING	1	CAST IRON	A-126	CLASS B
41	MAIN VALVE	1	RUBBER	D-2000	NATURAL
42	LOWER VALVE PLATE	1	CAST IRON	A-126	CLASS B
43	LOCK WASHER	1	STAINLESS STEEL	A-276	302
44	VALVE NUT	1	CAST IRON	A-126	CLASS B
45	VALVE NUT SEAL	1	RUBBER		NITRILE
46	HEX NUT 1/2"	8	STEEL	A-563	ELECTRO. GALV.
47	STEM O-RING	2	RUBBER	D-2000	BUNA N
48	SAFETY FLANGE NUT 5/8"	8	STEEL	A-563	ELECTRO. GALV.
49	DRAIN RING HOUSING O-RING	1	RUBBER	D-2000	BUNA N
50	SLEEVE	1	COPPER	B-75	ALLOY 122
51	UPPER STEM PIN	1	STAINLESS STEEL	A-276	302
52	HEX BOLT 3/4x4.00	6	STEEL	A-307	SAE J429 ELECTROGALV. GR. B
53	SHOE	1	DUCTILE IRON	A-536	65-45-12
54	PIPE GLAND	1	CAST IRON	A-126	CLASS B
55	TOP SEAT O-RING	1	RUBBER	D-2000	BUNA N
56	HEX NUT 3/4"	6	STEEL	A-563	ELECTROGALV. GR. B
57	MECH. JOINT GASKET	1	RUBBER	D-2000	NATURAL
58	T-HEAD BOLT 3/4x3.50	6	STEEL	A-242	A-588 TYPE 1
59	HEX NUT 3/4"	6	STEEL	A-242	A-588 TYPE 1

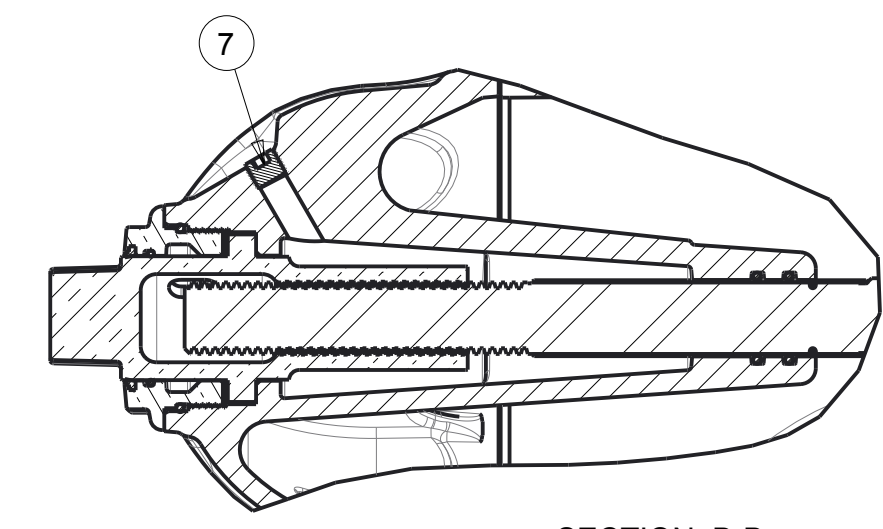
* NOT SHOWN



SCALE 0.160



6" M.J. SHOE COMPLYING TO ANSI/AWWA C111/A21.11-90 STANDARD



SECTION B-B OIL FILLER PLUG SECTION

NOZZLE INFORMATION
1-PUMPER NOZZLE (4-1/2" NST)
2-HOSE NOZZLES (2-1/2" NST)

4 1/2" A421 & 5 1/4" A423 SUPER CENTURION 250 W/TWO HOSE NOZZLES & ONE PUMPER NOZZLE - 250 P.S.I. W.P.-500 P.S.I. TEST, 1997 STYLE

REV.	DESCRIPTION	REF.	DRAWN	CHECKED	APP.	DATE
J	ADD ALTERNATE ASTM COLUMN, REVISE ITEMS# 9.26,46,48,52,56		ANC			9-6-16
H	REVISE MATERIAL ON ITEMS# 1, 4, 38		JBC			8/7/14
G	REVISE MATERIAL ON ITEMS# 14,18,36,39		ANC			10-31-13
F	CREATE DRAWING FROM PRO-E		JBC			5-21-13

(MILLIMETER) INCH INITIAL RELEASE DRFT: JBC 5-21-13 CHKR: APP: E.O. NUMBER	TOLERANCES - MACHINING UNLESS OTHERWISE NOTED BREAK EDGES FINISH SURFACES MACH. .006/.016 125 FRACTIONS ± 1/64 DECIMALS 2 PL: .025 3 PL: .010 ANGLES ± 1°	THIRD ANGLE PROJECTION PURCH. FINISH REF. NO. SCALE 1:3 STK. NO.
Mueller Co. MATT. SEE TABLE DESCR. 4 1/2" A421 & 5 1/4" A423 SUPER CENTURION 250 W/TWO HOSE NOZZLES & ONE PUMPER NOZZLE 1997 STYLE		NUMBER J FH 84 SHEET 1 OF 1