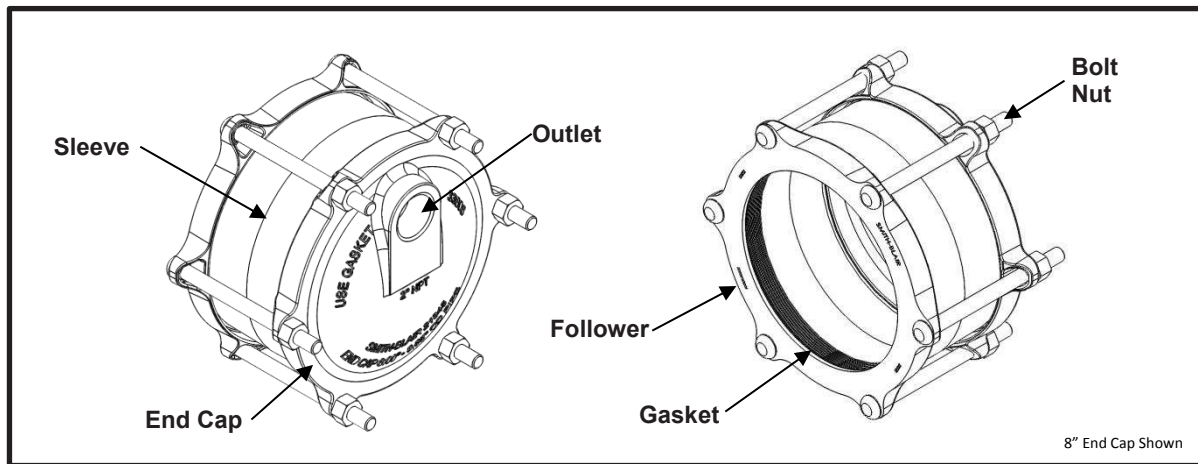


SPECIFICATION

OMNI™ CAST END CAP COUPLING

MODEL 482



APPLICATIONS

- **Typical Uses**
 - Pipe-end sealing
 - Pipe-end testing
- **Standard Pipe Sizes**
 - 2" to 12" nominal
- **Type of Pipe**
 - Carbon Steel, Stainless Steel, Ductile Iron, Asbestos Cement, PVC, HDPE (*with stiffeners*)
- **Working Pressure**
 - 250 psi

MATERIALS

- **Followers**
 - Cast using Ductile Iron 65-45-12 per ASTM A536
 - Flexi-Coat® fusion bonded epoxy finish
 - Flanges color coded for rapid and correct installation: Red for Iron pipe size, Blue for Ductile Iron pipe size, and Gray for Asbestos Cement
 - Permanently marked with part number and pipe size range for proper selection
 - Integral bolt head pocket for one wrench installation
- **Sleeve**
 - Cast using Ductile Iron 65-45-12 per ASTM A536
 - Flexi-Coat® fusion bonded epoxy finish
 - Single sleeve design for each nominal pipe size reducing inventory
 - Designed to provide up to 2.40" of range with a single assembly
- **End Cap**
 - Cast using Ductile Iron 65-45-12 per ASTM A536
 - Flexi-Coat® fusion bonded epoxy finish
 - Offset coupling supplied for blow off, draining or line test purposes

SPECIFICATION

OMNI™ CAST END CAP COUPLING

MODEL 482

- **Gasket**
 - Nitrile (Buna-N) per ASTM D2000
 - Compounded to resist water, oil, natural gas, acids, alkalies, most (aliphatic) hydrocarbon fluids, and many other chemicals
 - Temperature range: -20°F to +180°F
 - For Ductile Iron and Asbestos Cement pipe, the gaskets sealing surface has molded in ribs for maximum sealing on textured pipe
 - Permanently marked with part number and pipe size range for proper selection
- **Outlet**
 - Heavy tapping boss tapped 2" FNPT standard design
 - Offset for low point drain if required
- **Bolts**
 - High Strength Low Alloy (HSLA) Steel per AWWA C111/A21.11
 - 5/8"-11UNC, Oval Neck Track Head
 - Rolled threads for improved physical characteristics, greater thread accuracy, and smooth surface finish
- **Nut**
 - HSLA Steel per AWWA C111/A21.11
 - 5/8"-11UNC, Heavy Hex Semi-Finished

LISTINGS

- Certified to NSF/ANSI 61 and NSF/ANSI 372
- Meets applicable portions of AWWA C219
- Flexi-Coat® Fusion-Bonded Epoxy Coating meets requirements of AWWA C213

OPTIONS

- Type 304 Stainless Steel hardware with fluoropolymer coated nuts to prevent galling
- Type 316 Stainless Steel hardware with fluoropolymer coated nuts to prevent galling
- Alternative gasket material (e.g. Viton, EPDM, etc.)
- Protected gasket (brass spring molded into leading edge)
- Anode connector
- Insulating boot
- Custom outlet size and/or tap
- Carbon Steel 2" MNPT square head test plug

NOTES

- Pipe stiffeners **are required** when this product is used on HDPE
- Flexi-Coat® is a registered trademark of Smith-Blair, Inc.
- OMNI™ is a trademark of Smith-Blair, Inc.
- These product specifications were correct at the time of publication and are subject to change without notice
- See the Smith-Blair website for part numbers and ordering information
- See the Smith-Blair website for warranty information
- See the Smith-Blair website for corrosion notice



THIS PRODUCT DOES NOT RESTRAIN PIPE MOVEMENT. Proper anchoring is required to prevent pipe pullout. Failure to anchor or improper anchoring can result in dangerous pipe content escape, property damage, serious injury, or death. Read the product installation instructions prior to installing this product.



SPECIFICATION

OMNI™ CAST END CAP COUPLING

MODEL 482

Total Maximum Allowable Axial Pipe Movement per Coupling

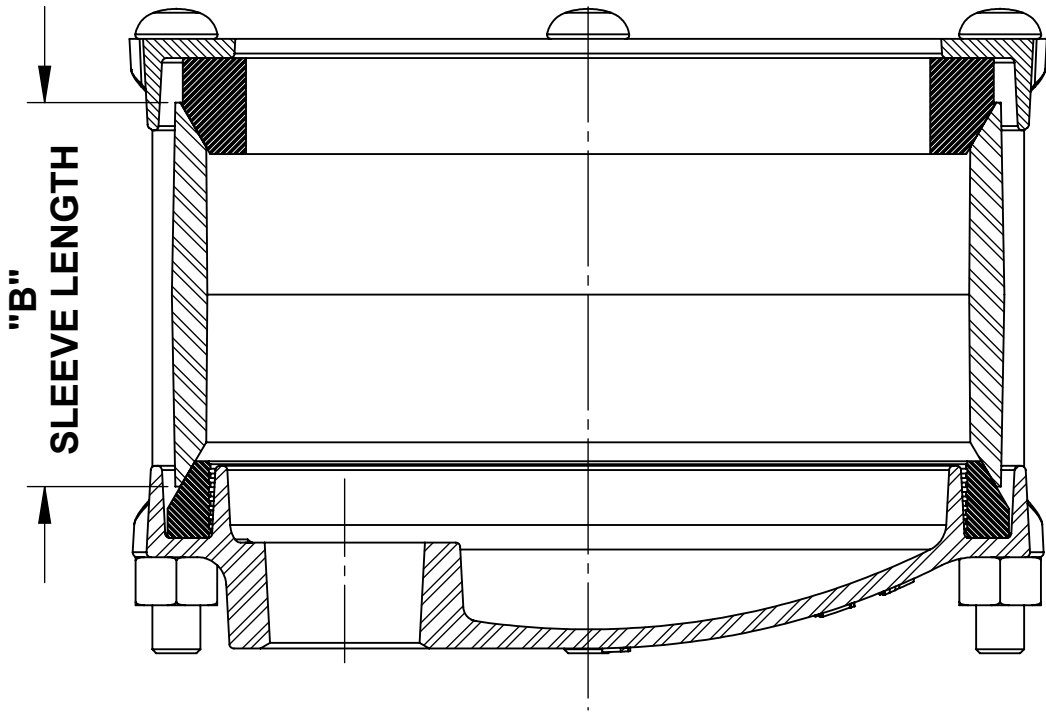
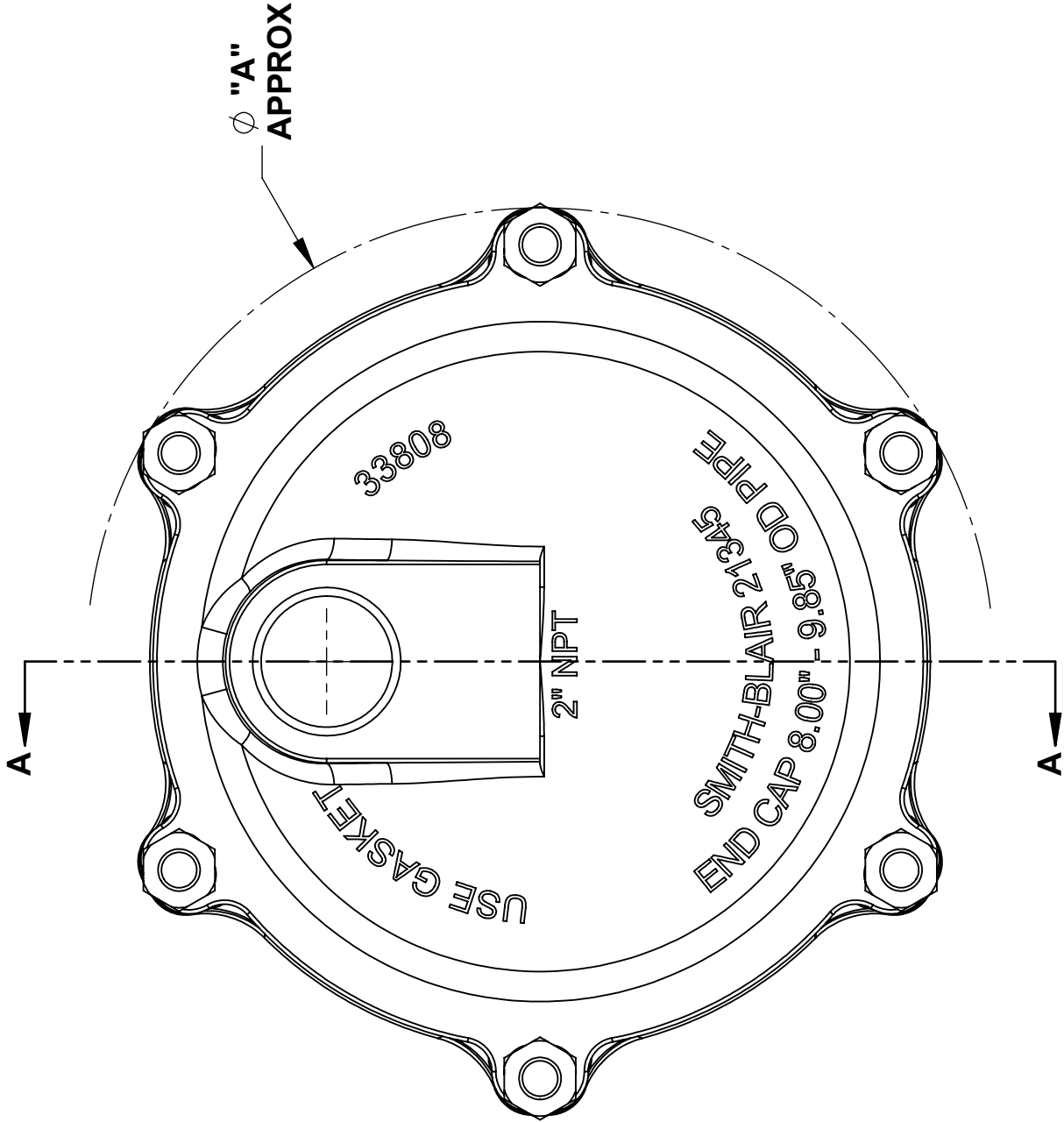
Coupling Size	Allowable Movement
3/4" to 2"	1/16"
2-1/2" to 10"	1/8"
10-3/4" and Larger	3/16"

Pipe End Tolerances

Nominal Pipe Size	Minus Tolerance	Plus Tolerance
1/2" up to 16"	-0.06	+0.06

Maximum Angular Deflection per Coupling 2° (Pipe-to-Sleeve)

30 Globe Ave, Texarkana, AR 71854
Ph: 870-773-5127 • Fax: 870-773-5212
Toll-Free Numbers: Ph: 800-643-9705 • Fax: 800-648-6792



SECTION A-A

NOTES:
1. 8" COUPLING SHOWN OTHER SIZES SIMILAR

NOM. PIPE SIZE	O.D. RANGE	A	B	HARDWARE		APPROX WEIGHT (LBS)
				QTY.	SIZE	
2	2.34 TO 2.63	6.19	4	2	5/8" X 8.00"	9
2.50	2.65 TO 2.88	6.19	4	2	5/8" X 8.00"	10
3	2.85 TO 4.14	7.81	4	4	5/8" X 8.00"	15
4	4.22 TO 5.45	8.59	5	4	5/8" X 8.00"	18
6	6.28 TO 7.65	11.31	5	4	5/8" X 8.00"	30
8	8.40 TO 9.85	13.72	5	6	5/8" X 8.00"	39
10	10.00 TO 12.20	16.00	6	6	5/8" X 9.00"	57
12	12.00 TO 14.40	18.94	6	8	5/8" X 9.00"	75

WRENCH SIZE CHART		
NUT		SIZE
5/8"-11UNC HH		1-1/16"

TOLERANCES U.N.O. XX= ±.03 XXX= ±.015 FRACTIONS= 1/16 ANGLES= ±1° MACH. FIN=	NOTES: REMOVE BURRS AND SHARP EDGES DO NOT SCALEDWG.	APP'D	DATE	
		CK'D	DATE	
	SCALE: N/A	DRN	CHD	DATE
TITLE SPECIFICATION OMNI™ CAST END CAP COUPLING MODEL 482				
SMITH-BLAIR, Inc. TEXARKANA, ARKANSAS			P/N N/A	
SPEC_482.DRW			1 OF 1 SHEET	
DWG. NO.			REV.	
			10/5/16	