

SPECIFICATIONS

FIGURE 571 CARBON STEEL VALVES



150# CARBON STEEL SWING CHECK VALVE

FEATURES

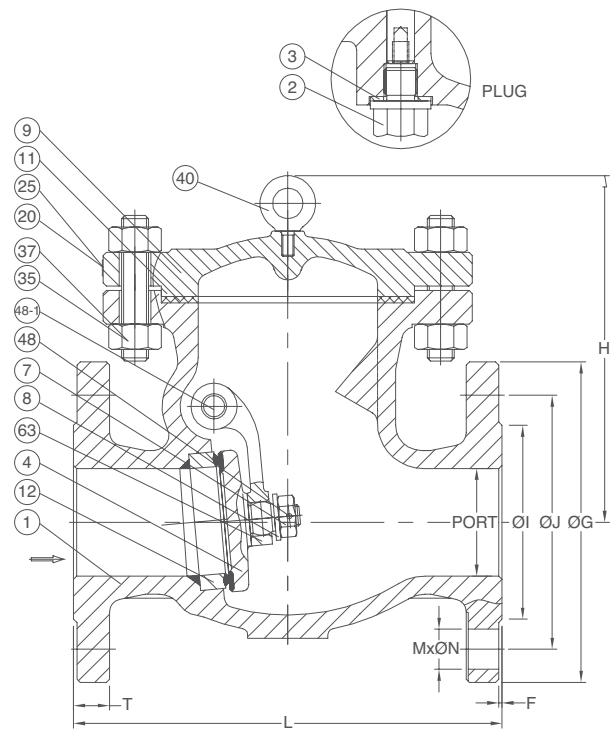
- Swing type design
- Bolted bonnet
- Body and bonnet joint accurately machined, full enclosed gasket
- Disc—robust one-piece construction to withstand the severe shock of check valve service
- Disc assembly—all parts are accessible from top for easy servicing
- Seat face stellited, ground and lapped to a mirror finish
- Pressure testing according to API 598

MATERIALS: SIZES 2" – 20"

| No. | Part Name | Material (more options available) |
|------|------------------|-----------------------------------|
| 1 | BODY | ASTM A216 Gr.WCB |
| 2 | PLUG | ASTM A276 TYPE 410 |
| 3 | PLUG SEAL | ASTM A276 TYPE 304 |
| 4 | DISC | ASTM A216 Gr.WCB + 13Cr. |
| 7 | DISC NUT | ASTM A276 TYPE 410 |
| 8 | DISC WASHER | ASTM A276 TYPE 410 |
| 9 | BONNET | ASTM A216 Gr.WCB |
| 11 | GASKET | SS304 + GRAPHITE (SPW) |
| 12 | SEAT RING | ASTM A105 + STELLITE#6 |
| 20 | RIVET | SS304 |
| 25 | NAME PLATE | SS304 |
| 35 | BODY BOLT (STUD) | ASTM A193 Gr.B7 |
| 37 | STUD BOLT NUT | ASTM A194 Gr.2H |
| *40 | EYE BOLT | CARBON STEEL |
| 48 | DISC NUT PIN | ASTM A276 TYPE 410 |
| 48-1 | DISC PIN | ASTM A182 Gr.F6A |
| 63 | HINGE | ASTM A216 Gr.WCB |

PRODUCT SPECIFICATIONS

- Valve design according to BS 1868
- Shell wall thickness according to API 600, BS 1868
- Pressure-temperature rating according to ASME/ANSI B16.34
- Material according to ASTM
- Face to face according to ASME/ANSI B16.10
- Flanged dimension according to ASME/ANSI B16.5



* No eyebolt on sizes 2"-3"

DIMENSIONS

| Item No. | Size | Port | L | H(CLOSE) | O1 | OJ | OG | T | M | ON |
|----------|--------|-------|-------|----------|-------|-------|-------|------|----|-------|
| FNW571K | 2" | 2.01 | 8.00 | 5.71 | 3.62 | 4.75 | 6.00 | 0.56 | 4 | 3/4 |
| FNW571L | 2-1/2" | 2.52 | 8.50 | 6.10 | 4.12 | 5.50 | 7.00 | 0.62 | 4 | 3/4 |
| FNW571M | 3" | 2.99 | 9.50 | 6.85 | 5.00 | 6.00 | 7.50 | 0.69 | 4 | 3/4 |
| FNW571P | 4" | 4.02 | 11.50 | 7.76 | 6.19 | 7.50 | 9.00 | 0.88 | 8 | 3/4 |
| FNW571U | 6" | 5.98 | 14.00 | 10.63 | 8.50 | 9.50 | 11.00 | 0.94 | 8 | 7/8 |
| FNW571X | 8" | 7.99 | 19.50 | 13.15 | 10.62 | 11.75 | 13.50 | 1.06 | 8 | 7/8 |
| FNW57110 | 10" | 10.00 | 24.50 | 15.83 | 12.75 | 14.25 | 16.00 | 1.12 | 12 | 1 |
| FNW57112 | 12" | 12.01 | 27.50 | 18.31 | 15.00 | 17.00 | 19.00 | 1.19 | 12 | 1 |
| FNW57114 | 14" | 13.27 | 31.00 | 21.34 | 16.25 | 18.75 | 21.00 | 1.31 | 12 | 1-1/8 |
| FNW57116 | 16" | 15.24 | 34.00 | 23.31 | 18.50 | 21.25 | 23.50 | 1.38 | 16 | 1-1/8 |
| FNW57118 | 18" | 17.24 | 38.50 | 24.41 | 21.00 | 22.75 | 25.00 | 1.50 | 16 | 1-1/4 |
| FNW57120 | 20" | 19.25 | 38.50 | 24.80 | 23.00 | 25.00 | 27.50 | 1.62 | 20 | 1-1/4 |