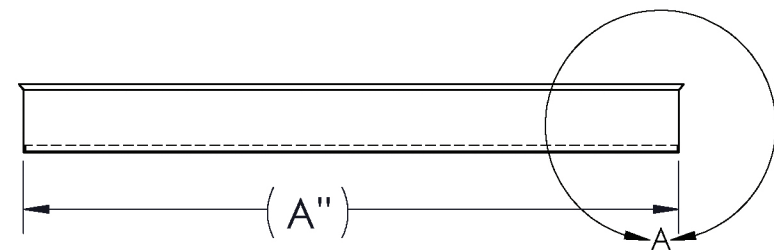


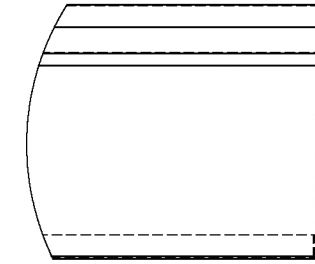
ITEM NUMBER	MATERIAL	DIM. A	DIM. B	DIM. C
300EC(SIZE)	30 GA. GALVANIZED	4-14"	DIM A. + $\frac{3}{16}$ "	2"
300EC(SIZE)	28 GA. GALVANIZED	16-20"	DIM A. + $\frac{3}{16}$ "	$1\frac{3}{4}$ "



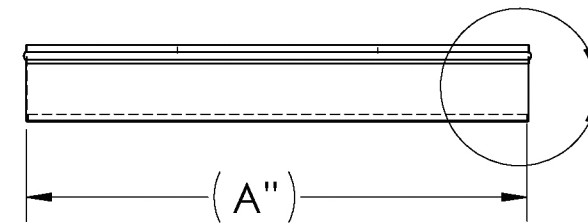
DETAIL A
SCALE 1 : 1.5



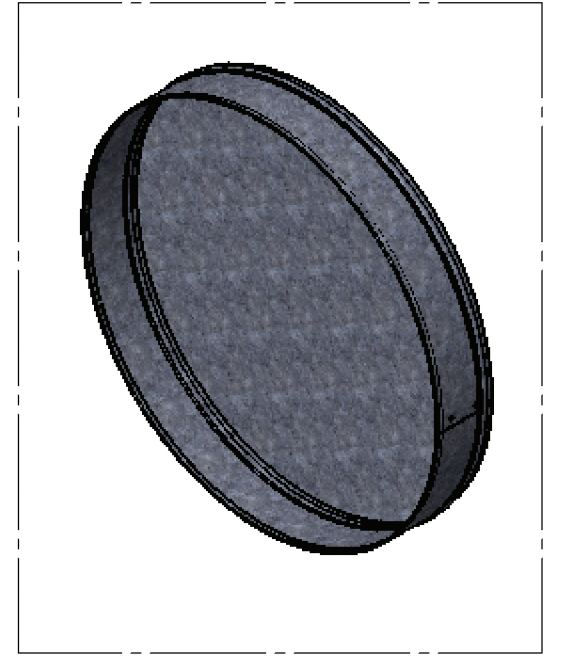
FOR SIZE 16"-20"



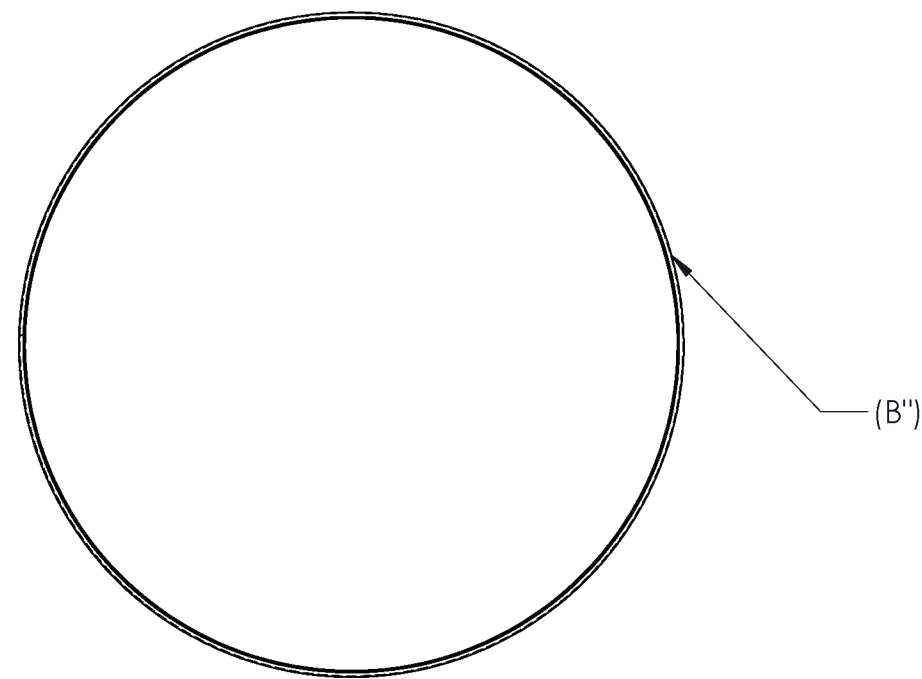
DETAIL B
SCALE 1 : 1.5



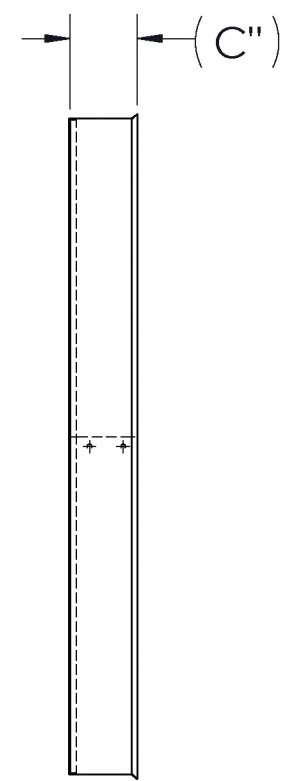
FOR SIZE 4"-14"



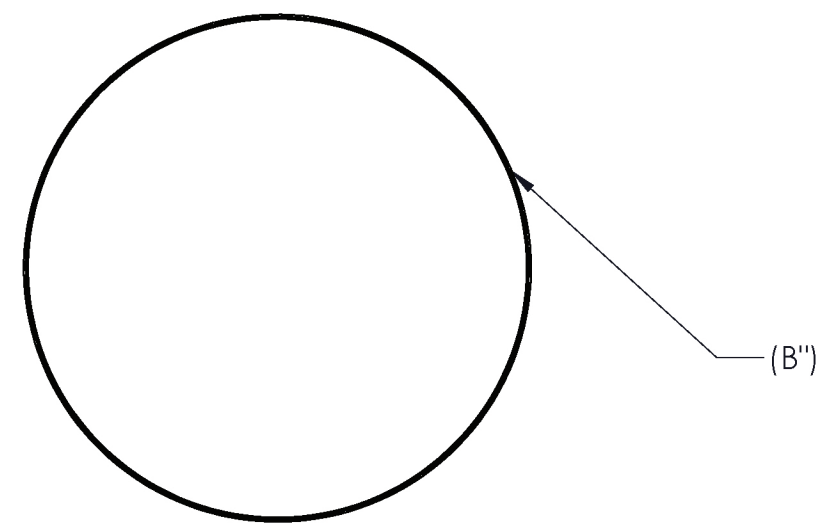
PERSPECTIVE VIEW



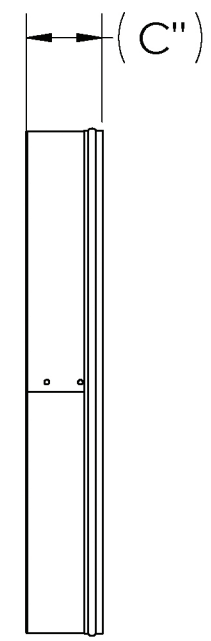
(B'')



(C'')



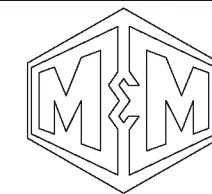
(B'')



(C'')

PROPRIETARY INFORMATION
THIS DRAWING AND/OR DATA SHEET, AND THE CONFIDENTIAL PROPRIETARY INFORMATION THEREON, ARE THE PROPERTY OF M&M MANUFACTURING, INC. AND ARE NOT TO BE REPRODUCED OR COPIED IN WHOLE OR IN PART, OR USED FOR UNAUTHORIZED MANUFACTURING OR ANY OTHER EXPLOITATION OF THE ITEM DISCLOSED THEREIN, OR IN ANY OTHER WAY DISCLOSED OR USED FOR FURNISHING INFORMATION.

NOTE: M&M RESERVES THE RIGHT TO INCREASE THE GAGE OF COMPONENT PARTS.



M&M MFG.CO.,INC.
4001 MARK IV PKWY.
P.O.BOX 163409
FORT WORTH, TX.76161
PH. (817) 336-2311
FAX.(817) 625-5193

CONFIDENTIAL

THIS DOCUMENT IS THE CONFIDENTIAL PROPRIETARY INFORMATION OF M&M MFG. CO. AND SHALL NOT BE DISCLOSED, COPIED, OR USED FOR ANY PURPOSE OTHER THAN FOR WHICH THIS DOCUMENT IS SPECIFICALLY FURNISHED WITHOUT PRIOR WRITTEN CONSENT AND APPROVAL OF M&M MFG. CO.

Part title		EC (4"-20")	
Proj. title		END CAP	
Tolerances Unless Otherwise Specified X.XXXX ±.0005; X.XXX ±.002; X.XX ±.01 Fractional ± $\frac{1}{16}$ " Angles ±0° 15'			
Dr. by	J. GONZALEZ	Date	10/17/2011
Ck. by	P. WYATT	Date	10/17/2011
App. by	K. HIGHLAND	Date	10/17/2011
Part no.	300EC(SIZE)		
Scale	xx:xx	Asst#	xxxx-xxxx
Sheet	xx of xx	Size	C