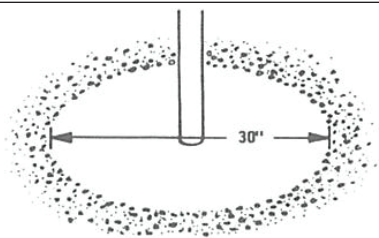
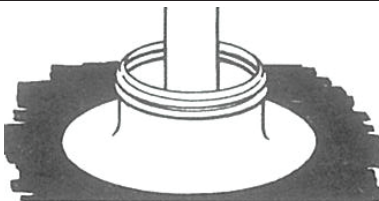


# PORTALSPLUS™



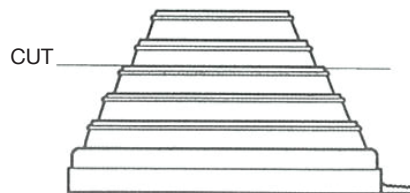
## STEP 1

Scrape back gravel and prepare surface 15" in all directions from the penetration.



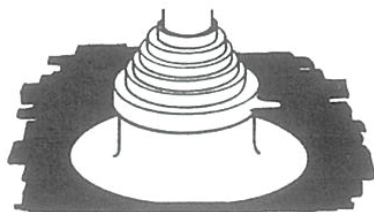
## STEP 2

Clean and prime flange in accordance with roof manufacturer's recommendations. Spread mastic or adhesive over cleared area and place base over the pipe.



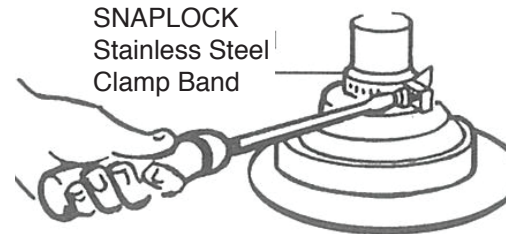
## STEP 3

Select proper step of the rubber cap and cut off above index ring. REMEMBER: When in doubt, cut the smaller size.



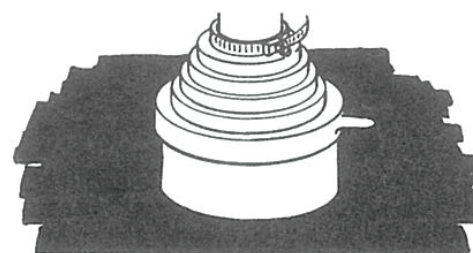
## STEP 4

Slip the cap down over the pipe and on to the collar. Press around edge to be sure cap is properly sealed. This will center the unit.



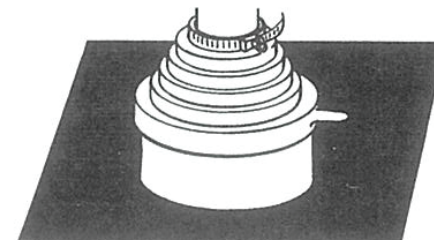
## STEP 5

Place clamp around pipe and rubber cap and tighten screw.



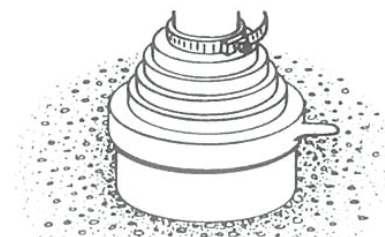
## STEP 6

Apply mastic or adhesive over top flange and cleared area of roof.



## STEP 7

Strip in with roofing material.



## STEP 8

Cover with ballast material.

## Prefabricated Roof Accessories for ALL Roof Systems!