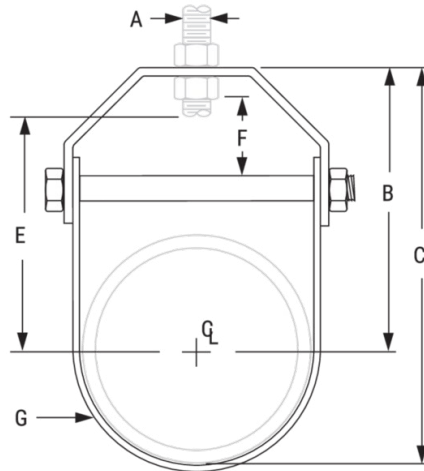
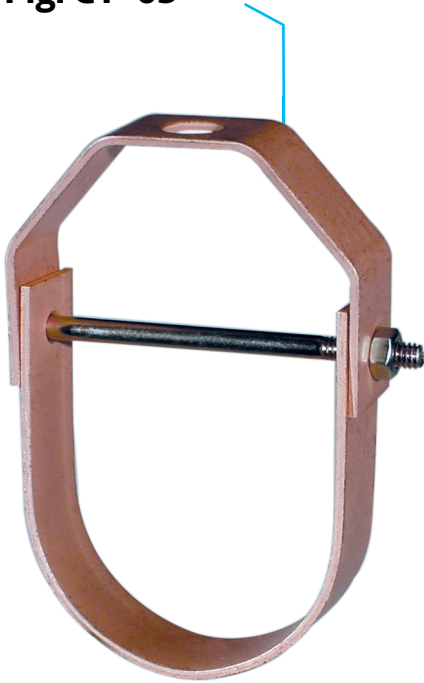


Light Duty Adjustable Clevis Fig. CT-65



Size Range: 1/2" through 4"

Material: Carbon Steel

Finish: Copper Plated

Service: Recommended for suspension of non-insulated, stationary copper tube.

Approvals: Complies with Federal Specification WW-H-171-E (Type 12). Complies with ANSI/MSS SP-58 (Type 1).

Installation:

1. Adjustment may be made either before or after tubing is in place without temporary support of pipe.
2. Hanger rod and nuts may be locked into position after adjustment by use of the upper nut.

Features: Provides for adjustment up to 1 7/8".

Ordering: Specify nominal tube size, figure number, name and finish.

Fig. CT-65: Dimensions (in) • Loads (lbs) • Weight (lbs)

Tube Size	Max Load	Weight	Rod Size A	B	C	D	Rod Take Out - E	Adjustment F	G Width Lower
1/2	150	0.09	3/8	1 1/2	1 27/32	1 7/16	1 1/16	5/16	5/8
3/4		0.10		1 11/16	2 3/32	1 9/16	1 1/4	7/16	3/4
1		0.17		1 7/8	2 13/32	1 5/8	1 7/16	1/2	
1 1/4	250	0.18	2 5/32	2 13/16	1 3/4	1 11/16	5/8		
1 1/2		0.21	2 17/32	3 3/8	1 15/16	2 1/16	13/16		
2	350	0.26	3/8	3 11/32	4 17/32	2 5/16	2 7/8	1 3/16	3/4
2 1/2		0.48		3 27/32	5 9/32	2 3/4	3 1/4	1 5/16	
3		0.55		4 15/32	6 7/32	3	3 7/8	1 5/8	
4	400	0.60	4 31/32	6 31/32	3 1/4	4 3/8	1 7/8		

Note:

1. Reflects changes in rod diameter from previously published data per recent revisions in MSS-SP-58 & 69.
2. 3 1/2" tube size alternate - 3 1/2" Fig. 65 galvanized.



PROJECT INFORMATION	APPROVAL STAMP
Project:	Approved
Address:	Approved as noted
Contractor:	Not approved
Engineer:	Remarks:
Submittal Date:	
Notes 1:	
Notes 2:	