



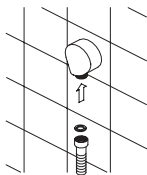
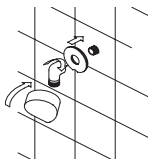
Hansgrohe 27454XX1 Wall Outlet Installation

Installation Considerations

This unit requires a 1/2" male threaded pipe fitting extending 3/8" outside the surface of the finished wall.

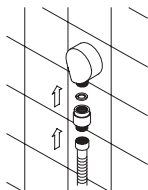
Installation Instructions:

- Wrap the pipe fitting with several layers of Teflon™ thread tape. Seal the wall around the pipe fitting with a non-staining compatible waterproof sealant.
- Install the female end of the elbow through the gasket and onto the fitting. Test for leaks.
- Install the cover over the elbow and snap into place on the gasket. Install the handshower hose.



Backflow Prevention

This wall outlet does not include a backflow prevention device, which is required by code in many areas. We recommend the use of Hansgrohe model 06510 vacuum breaker or a comparable device. The Hansgrohe 06510 vacuum breaker should be installed between the hose and the wall outlet, NOT between the handshower and the hose.





Hansgrohe 27458XX1 Wall Outlet with Vacuum Breaker Installation

Listed by IAPMO

Installation Considerations:

This unit requires a 1/2" female pipe fitting installed 3/8" *behind* the surface of the finished wall.

Installation

- There are two male ends on the elbow. The male threaded end that appears to have two threads missing is the end that goes into the wall. (see illustration) Wrap this end clockwise with 2-3 layers of Teflon™ thread tape. Screw firmly through the gasket and into the fitting.
- Test for leaks.
- It is normal for a few drops of water to appear in the vent holes when the water is first turned on and again when it is first turned off. If water sprays from the vent holes, remove the elbow. Reinstall with the correct end in the wall.
- Seal the wall around the elbow with a compatible, non-staining waterproof sealant.
- Slide the cover over the elbow and snap into place.
- Screw the handshower hose to the outlet.

