

# WASTE WATER DRAIN LAUNDRY PUMPS LTP/LTS SERIES

# DATA SHEET

- 💧 Suds proof reservoir
- 💧 No main stack vent connection required\*
- 💧 Sealed switch assembly

## LTP medium capacity reservoir pump.

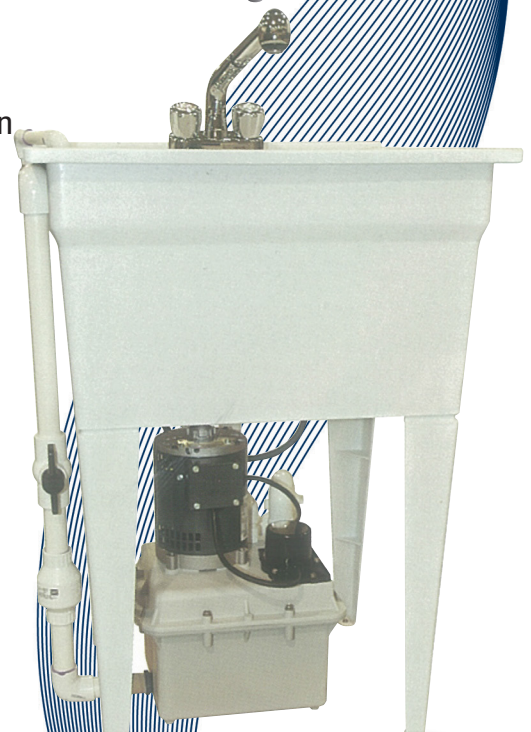
Designed for laundry and wet bar applications. Primarily used where the sink or appliance is installed below the plumbing drain.

## LTS medium temp, high capacity reservoir pump.

Heavy duty pump designed for moving large quantities of water. Used in commercial and industrial air-conditioning system, large refrigeration units, and multiple unit installations to tie several drains into one disposal pump.

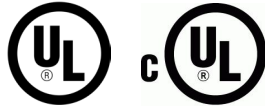
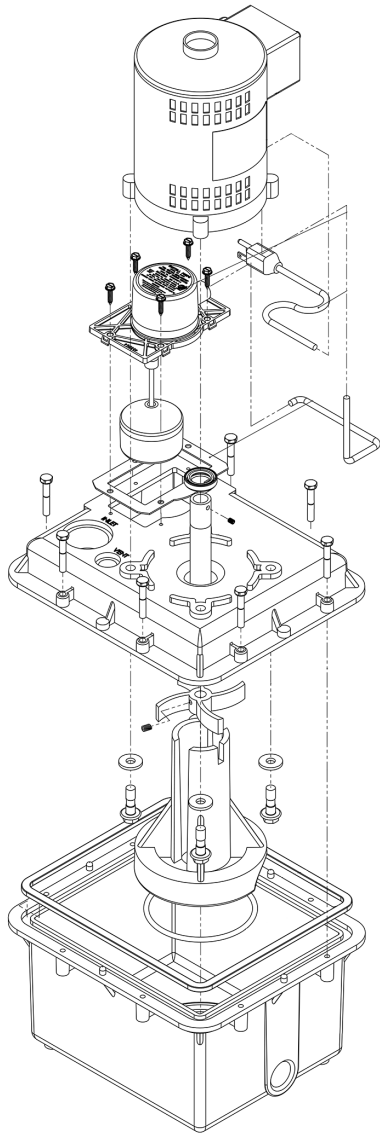
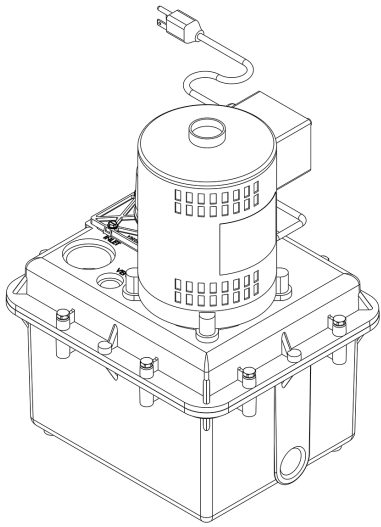
### FEATURES:

- 💧 Structural foam polypropylene reservoir
- 💧 8 foot cord and plug
- 💧 Fits inside 24" base cabinets
- 💧 Allows sink installation without breaking concrete
- 💧 Unitized construction
- 💧 Fits under utility sinks
- 💧 Simple installation, saves time
- 💧 Max Temperature: 130°F (54°C)



Model	Part No.	Voltage	HP @ RPM	Performance			Max. Lift	Dimensions			
								Width	Length	Height	Weight
LTP-1	801284	115V 5A 60 Hz	1/4 @ 1725	Lift/Feet	6'	10'	12'	10"	12"	17"	24 lbs
				Gallons/Hr	2370	1500					
				Lift/Meters	1.83m	3.05m	3.66m	25.4cm	30.48cm	43.18cm	10.89 kg
				Liters/hr	8971	5680					
LTS-1	801285	115V 5.6A 60 Hz	1/3 @ 1725	Lift/Feet	6'	10'	16.5'	10"	12"	17"	24 lbs
				Gallons/Hr	2628	2100					
				Lift/Meters	1.83m	3.05m	5.03m	25.4cm	30.48cm	43.18cm	10.89 kg
				Liters/Hr	9948	7950					

\*N.S.P.C. Section 11.7.9. Check local codes



**1  
YEAR  
WARRANTY**

# DATA SHEET

## WASTE WATER DRAIN LAUNDRY PUMPS LTP/LTS SERIES

### PERFORMANCE CURVE

