

PF108202



In-line Air Vent

Product Features

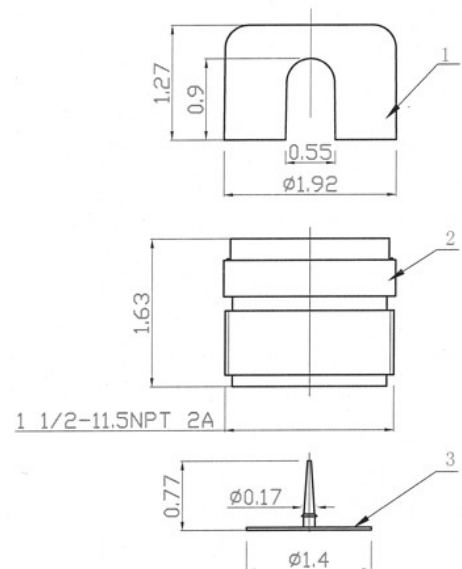
- Vent installs on drain line and vents the line to prevent sewer gas from entering the home
- Vent is made of ABS material
- For use when venting tubs, showers, sinks, washing machines, etc.
- For use on manufactured housing and RV's only
- Eliminates the need for additional stacks



PF108202

Product Specifications

- Must be located at minimum of 60" above trap arm
- Two individual fixtures can be connected to the same 1-1/2" drain
- Water closet must have main stack to outside
- Three or more fixtures must be drained by a 2" line
- Hand tighten only
- Must be installed in an accessible location with free flowing air
- Do not install in a sealed wall
- 1-1/2" MPT



No.	Description	Material
1	Cover	ABS
2	Body (Tube)	ABS
3	Gasket	Rubber

Warranty and Codes

This PROFLO product carries a 1-year limited warranty.