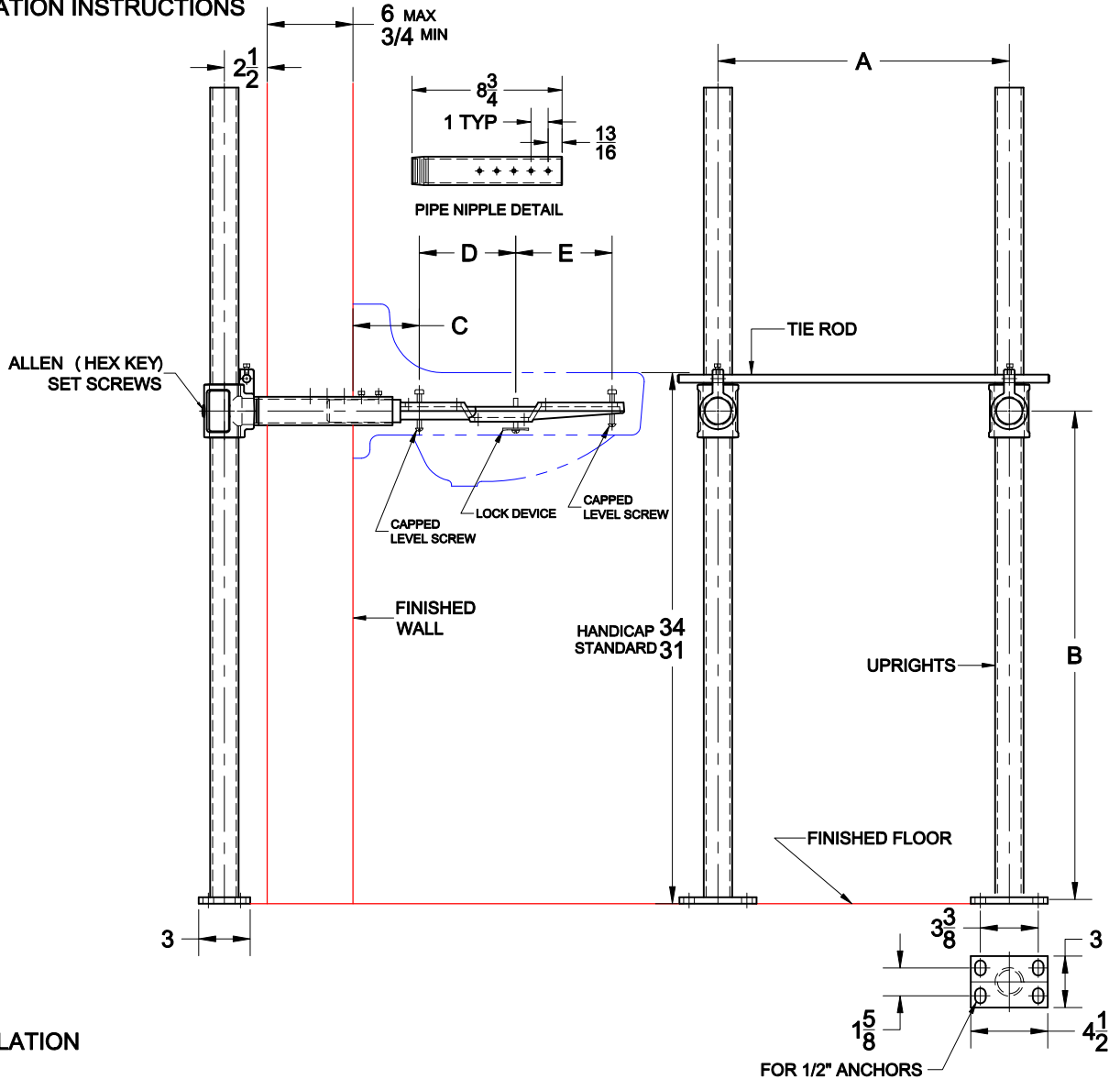


# LAVATORY CARRIER



## 520 SERIES

CONCEALED ARM LAVATORY CARRIER WITH UPRIGHTS, WELDED BASE FEET, CAST IRON HEADER COUPLINGS, SCH.40 PIPE NIPPLES, LEVELING SCREWS, LOCK DEVICES AND TIE ROD.  
**INSTALLATION INSTRUCTIONS**



### INSTALLATION

- Using the carrier rough-in sheet for the specified lavatory, position the header couplings onto the uprights to the desired height ( Dimension B ) - Tighten header coupling set screws with an allen wrench.
- Attach the tie rod to the header couplings with the square head set screws at the position indicated on the fixture rough-in sheet - Dimensions A. Screw the pipe nipples into the header couplings aligning the tapped holes facing up.
- Position assembled carrier onto floor at the anticipated fixture centerline and behind the anticipated finished wall. Secure the feet with ( 4 ) 1/2" wedge anchors per welded base foot support.
- After finished wall is completed, the pipe nipples should protrude through the wall. After finished wall is complete, slide the arms into the pipe nipples and secure with square head set screws.
- Position leveling screws and lock devices to match the lavatory punchings ( Dimensions C,D & E ) . Install the rubber caps onto the leveling screws and gently slide the lavatory onto the arm assemblies.
- From the underside, level the lavatory with the four leveling screws with a phillips screwdriver. When level, screw the lock devices down until it contact the lavatory.

AutoCad.dwg

Approval Date  
 Customer Approval  
 Job Location  
 Job Name  
 Dimensional Data ( Inches/mm ) are Subject to Manufacturers Tolerance and Change Without Notice.  
 Wade Division / Tyler Pipe Assumes No Responsibility For Superseded or Voided Data