

Features

- Solid brass construction
- Double-post design with rigid, outwardly curved bar
- Complements Surface product series

Towel Ring 2805

Codes / Standards Compliance

Meets or exceeds the following at date of manufacture:

- All applicable US Federal and State material regulations

Colors / Finishes

- PC: Polished Chrome
- SN: Satin Nickel



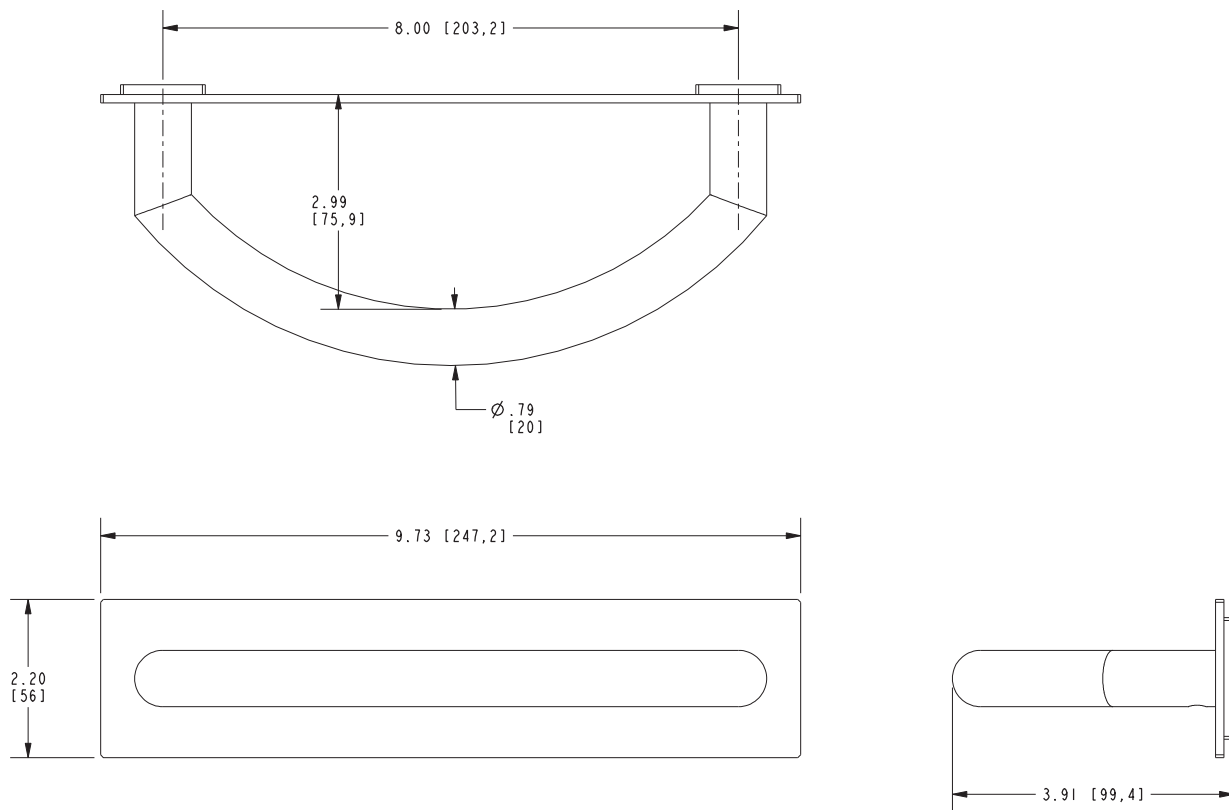
Specified Model

Model	Description	Colors Finishes
2805	Towel Ring	<input type="checkbox"/> PC <input type="checkbox"/> SN

Product Specification: Add "Color / Finish" Suffix to Model Number Below

The Towel Ring shall be made of solid brass construction and incorporate a double-post design with rigid, outwardly curved bar. Towel Ring shall complement Ginger Surface product series. Towel Ring shall be Ginger Model 2805/_____.

2805



Surface Towel Ring 2805