

UNIVERSAL ADJUSTABLE BRACKET

523 BRACKET

PowerBar™

SPECIFICATION

Sioux Chief's PowerBar universal adjustable bracket shall be used where necessary for supporting pipes or stub outs. Bracket shall be corrosion resistant and adjust telescopically and have dual fastening tabs on each end. Pilot holes for #6 – #10 screws shall be provided on three sides of the bracket. Bracket shall be available in two different sizes to accommodate 16" or 24" stud bays and packaged with or without screws for fastening each tab to structure.

Optional adjustable channel clamps with elastomer inserts for fastening any pipe, tube, cable, etc. shall be available. (See separate specification document for information on pre-loaded adjustable channel clamps).

Bracket shall be approved for use with copper tube, CPVC tube, PEX/PB tube, steel pipe, Drop Ear or High Ear brass 90 fittings or other water supply or DWV fittings, CSST lines, plastic or steel conduit. Bracket shall be IAPMO certified.

INSTALLATION

Adjust bracket to desired length (bracket must have a minimum overlap of 2" in center). Fasten all four tabs to studs, joists or walls. Position Drop Ear 90, High Ear 90 or other tube clamp or tube strap at desired location along bracket and secure with screws. It is permissible to use one bracket section and fasten directly through channel.

MATERIALS

Bracket: 20 gauge (0.036" +/- .003) galvanized steel

Screws: #8 x 1" Phillips, panhead, drill-tip, zinc-plated (optional)

SAFE WORKING LOAD*

523-16 and 523-1604		523-24 and 523-2404	
Bracket span	Safe load	Bracket span	Safe load
9"	90 lbs (max)	14"	150 lbs.
12"	82 lbs.	17"	115 lbs.
15"	66 lbs. (min)	21"	80 lbs.
		24"	45 lbs.

*Safe working load = 1/2 failure of centrally hung load

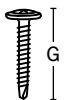
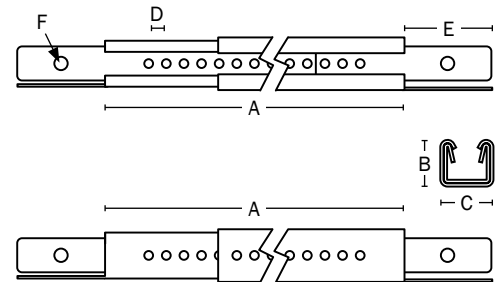
DIMENSIONS

	523-16	523-24
A: outer/inner bracket length	9"	14"
B: bracket height	0.529"	0.529"
C: bracket width	0.602"	0.602"
D: pilot hole spacing	0.203"	0.203"
E: tab length	1"	1"
F: pilot hole diameter	0.1"	0.1"
G: screw length	1"	1"

ITEM # SUBMITTED	_____
JOB NAME	_____
LOCATION	_____
ENGINEER	_____
CONTRACTOR	_____
PO#	_____ TAG _____



523-2404



Made in USA

Create Item Number

523-A

e.g. **523-2404:** 14" – 26" adjustable bracket with six screws

BRACKET CONFIGURATION A

16 = 9" – 16" adjustable bracket; no screws

1604 = 9" – 16" adjustable bracket; six screws

24 = 14" – 26" adjustable bracket; no screws

2404 = 14" – 26" adjustable bracket; six screws