

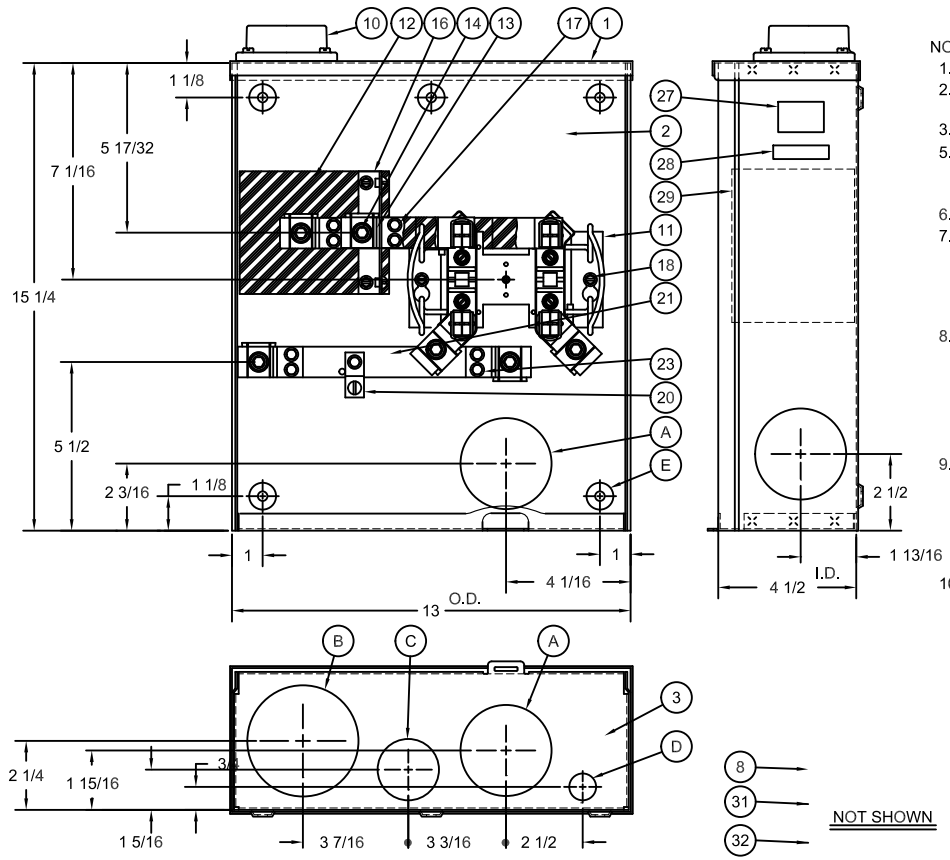
CAT. NO.	TOP ITEM #1	BACK ITEM #2	SHELL WELDMENT #
PREFIX 1980-O	#1000204 (SO) #1004925 (AO)	#1000224 (SO) #1005050 (AO)	#1000320 (SC) #1005123 (AC)
PREFIX 1980-()	#1000205 (SO) #1004927 (AO)	#1000224 (SO) #1005050 (AO)	#1000321 (SC) #506871-AC
U1980-O-BCEC	#1000204 (SO)	#1151203 (SO)	#1151204 (SC)

CAT. NO. SUFFIX						
SUFFIX	HUBS ITEM #10		SUFFIX	B & B ASSY. ITEM #11	SUFFIX	FRONT ASSY. ITEM #8
-O	BLANK TOP	# NONE	NONE	#1102322	NONE	#1106708 (SC)
-WL	1"	# HUB W	-KK	#1106482		#1115664 (AC)
-YL	1 1/4"	# HUB Y	-OS	#1115351	-PL	#1116472
-ZL	1 1/2"	# HUB Z			-IL	#907808-SC
-DL	2"	# HUB D			THE FOLLOWING FRONTS ARE ON DRWG. #1106719	
-EL	2 1/2"	# HUB E			-MBLW	#906419-SC
-XL	CLOSING PLATE	#1028222			-WEMC	#906642-SC
-RL	HUB OPENING	# NONE			-DEC	#1115748
					-OEC	#1115764
					-VEC	#911856-SC
					-COE	#913286-SC
					-TRP	#913934-SC
					-TREC	#1115766
					-BCEC	#1151208

CAT. NO. PREFIX

S = 16 GA. STEEL PAINTED SHELL NON-U/L LABELING
 U = 16 GA. STEEL PAINTED SHELL U/L LABELING
 AP = .064 ALUM. PAINTED SHELL NON-U/L LABELING
 UAP = .064 ALUM. PAINTED SHELL U/L LABELING
 R = 16 GA. STEEL PAINTED SHELL U/L LABELING, SINGLE PACK (RETAIL)

BILL OF MATERIAL			
NO.	QTY.	DESCRIPTION	
A	4	1 1/4, 1 1/2, 2, 2 1/2	CONC. K.O.
B	1	2, 2 1/2, 3	CONC. K.O.
C	1	3/4, 1, 1 1/4, 1 1/2	CONC. K.O.
D	1	1/4, 1/2	CONC. K.O.
E	5	U/L MOUNTING EMBOSS	
1	1	TOP	#{SEE CHART}
2	1	BACK	#{SEE CHART}
3	1	BOTTOM	#1000236/#1005066
8	1	FRONT ASSY.	#{SEE CHART}
10	1	UNIT HUB	AS SPECIFIED #{SEE CHART}
11	1	BLOCK & BRIDGE ASSY	#{SEE CHART}
12	1	INSULATOR	#1000355
13	4	350 kcmil CONNECTOR	#1000364
14	4	350 kcmil NUT ASSY	#1000414
16	1	INSULATOR SUPT. ASSY.	#1000392
17	4	CONN. TO BUS SCW.	#1000172
18	4	BRIDGE TO BACK SCW.	#1000183 (SEE NOTE 4)
20	1	1/0 CONN. ASSY.	#1000199 (SEE NOTE 5)
21	1	GRND. BUS	#1000370 (1/8 X 1 ALUM.) (SEE NOTE #3)
23	5	CONN. TO BACK SCW.	#1000192 (SEE NOTE 4)
27	1	WHEN SOLD AS U/L	SUPPLY LABEL #1000166 LOC."A" (SEE NOTE)
28	1	STAMP CAT. NO.	
29	1	FOR NON U/L LABEL USE	#1134971 FOR U/L LABEL USE #1000071 LOC."B" (SEE NOTE)
31	1	LABEL #1000064, LOC. (OUTSIDE	UPPER LEFT CORNER OF FRONT, SEE NOTE9)
32	SN	LABEL #1000066 (SEE NOTE 9)	



NOTES:
 1.)FOR LABELING LOC. SEE DWG. #1096668.
 2.)FOR FIELD INSTALLED FIFTH TERM. ASSY ORDER CAT. # K5T.
 3.)WHEN SOLD AS U/L ALL BUS BARS TO BE TIN PLATED.
 5.)WHEN CAT. # HAS -QG SUFFIX, SUBSTITUTE IT 20 1/0 CONN. ASSY WITH (1) 1/0 2-POS. CONN. ASSY #1000386.
 6.)CONSUMER ENERGY STOCK NO. 14-85507.
 7.)WHEN SOLD AS -CE, CARTON LABEL REQUIRES CONSUMERS ENERGY STOCK NUMBER IN CATALOG NUMBER POSITION AND CATALOG NUMBER IN SECOND DESCRIPTION POSITION. ENTER CUSTOMER BILLING NO. 062500 IN "FREIGHT LINE/NOTE" FIELD.
 8.)WHEN SOLD W/"R" PREFIX, UNIT TO BE SINGLE PACKED IN CARTON 1022196 (KC) OR 1000167 (ELD) WITH CARTON LABEL BELOW:
 R1980-O: #1130589
 R1980-O-KK: #1130590
 R1980-O-KK-DPL: #1131232
 9.)WHEN CAT. NO. SUFFIX -DPL IS ORDERED: ALL CONNECTORS TO BE PLATED WITH ALNOX INHIBITOR INSTALLED; INSTALL (1) LABEL #1000066 ON OUTSIDE LOWER LEFT CORNER OF FRONT; DO NOT SUPPLY ITEM 31 #1000064 LABEL ON FRONT.
 10.)WHEN CAT. NO. SUFFIX "E" IS ORDERED: SUPPLY EXT. HEX NUT BAG ASSY #1000603 (2) IN PLACE OF INT. HEX NUT ASSYS.

CARDBOARD CLOSING PLATE #1000158 1-PER
 K.C. CARTON #1022196 1-PER
 ELD. CARTON #1000167 1-PER

REVISIONS:	T	DATE	DESCRIPTION	BY	CHKD	DATE	DESCRIPTION	T2	DATE	DESCRIPTION	BY	CHKD	DATE	DESCRIPTION
		8/19/08	1134971 W 1000045				H.D. LABELS (ECO #19381)		6/18/12	REMOVED NOTE 4 (ECO #22502)	JWH	F3		
			DELETE 1000044 (ECO #17555)	D.F.	E	T2	1/18/11	CHART BCEC (ECO #20214)						
	T1	4/26/10	NOTE 8: REMOVE											

MATERIAL:	16 GA. STL. or .064 ALUM.
FINISH:	MILBANK LIGHT GRAY
CATALOG NO:	(SEE CHART)
TITLE:	200A RGLS 4-TERM 350 kcmil SIDE WIREWAY M/S
CUSTOMER:	MILBANK STANDARD
DRAWING NO:	1980
MILBANK MFG. CO.	
KANSAS CITY, MO.	KOKOMO, IN.
DRAWN BY: LAL	SCALE:
CHECKED BY: LAL	DATE: 12-14-90
APPROVED:	