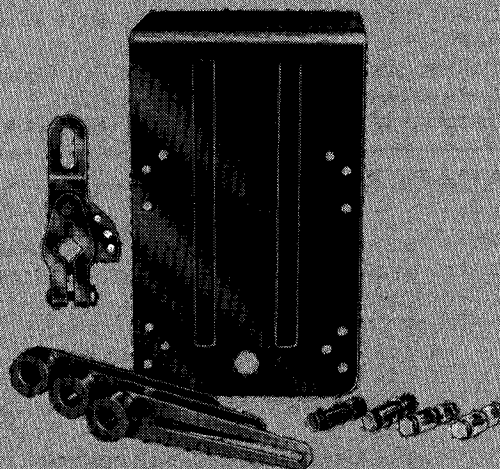


# Honeywell

THE Q605F,G,H,J DAMPER LINKAGE CONNECTS A MODUTROL IV MOTOR TO A STANDARD DAMPER OR SET OF DAMPERS TO PROVIDE CONTROL OF DUCT AIRFLOW.

- ☐ Q605F used to mount motor externally on duct.
- ☐ Q605G used to mount motor inside duct.
- ☐ Q605H used to mount motor externally or internally on duct.
- ☐ Q605J used to mount motor externally on duct without mounting bracket.
- ☐ Linkages include motor mounting bracket (except Q605J), motor crank arm, damper crank arm (except Q605G), and ball joints.
- ☐ Adjustable to any desired degree of damper opening.
- ☐ Damper crank arms for 1/2 inch damper shaft standard, crank arms for 3/8 or 7/16 inch shaft available.
- ☐ Pushrods available in lengths from 12 to 48 inches.
- ☐ Motor crank arm adapter available to permit control of 2 or 3 dampers in selected applications where standard linkages cannot be used. (Standard in Q605H1024 SUPER TRADELINE.)

## DAMPER LINKAGE



## Q605F,G,H,J

# SPECIFICATIONS

## IMPORTANT

THE SPECIFICATIONS GIVEN IN THIS PUBLICATION DO NOT INCLUDE NORMAL MANUFACTURING TOLERANCES. THEREFORE, THIS UNIT MAY NOT MATCH THE LISTED SPECIFICATIONS EXACTLY. ALSO, THIS PRODUCT IS TESTED AND CALIBRATED UNDER CLOSELY CONTROLLED CONDITIONS, AND SOME MINOR DIFFERENCES IN PERFORMANCE CAN BE EXPECTED IF THOSE CONDITIONS ARE CHANGED.

## SUPER TRADELINE/TRADELINE MODELS

SUPER TRADELINE linkage offers features not available on TRADELINE or standard models, and are designed to replace a wide range of Honeywell and Competitive models. SUPER TRADELINE/TRADELINE models are selected and packaged to provide ease of stocking and handling as well as maximum replacement value. Specifications of SUPER TRADELINE and TRADELINE linkages are the same as those of standard models except as noted below.

### SUPER TRADELINE MODELS AVAILABLE:

Q605H1024 Damper Linkage.

### SUPER TRADELINE FEATURES INCLUDE:

- Left-hand drive ear, Part No. 14000644-004. Assists internal motor mounting.
- Three damper crank arms for 1/2 in. diameter shaft, Part No. 260262G.
- Four ball joints for 5/16 in. pushrod, Part No. 27518.
- Crank arm adapter assembly, Part No. 220767A.
- Permits simultaneous control of two or three dampers as described under ACCESSORIES.
- Template showing installer how to fabricate a

reinforcement plate to strengthen bottom of duct if required for internal mounting.

- Adhesive backed labels indicating damper position (open ad closed), direction (arrow) of air flow, and "Honeywell Energy Management Control System."

### TRADELINE MODELS AVAILABLE:

Q605F1018 Damper Linkage.

### TRADELINE FEATURES:

- Includes the Honeywell Damper Adjustment Guide.
- TRADELINE pack with cross reference label and special instruction sheet.

## STANDARD MODELS

### MODELS:

Q605F—Bracket and linkage for connecting a Modutrol motor to a louver damper when the motor is mounted externally on the duct.

#### Consists of:

- a. External motor mounting bracket.
- b. Motor crank arm.
- c. Damper crank arm for 1/2 inch diameter shaft.
- d. Ball joints (2) for 5/16 inch pushrod.

Q605G—Bracket and linkage for connecting a

Modutrol motor to a louver damper when the motor is mounted internally.

#### Consists of:

- a. Internal motor mounting bracket.
- b. Motor crank arm.
- c. Adapter arm for motor crank arm.
- d. Ball joints (2) for 5/16 inch pushrod.

Q605H—Bracket and linkage for connecting one Modutrol motor to two louver dampers when the motor is mounted externally on the duct.

(continued on page 3)

# ORDERING INFORMATION

WHEN PURCHASING REPLACEMENT AND MODERNIZATION PRODUCTS FROM YOUR AUTHORIZED TRADELINE WHOLESALE OR DISTRIBUTOR, REFER TO THE TRADELINE CATALOG OR PRICE SHEETS FOR COMPLETE ORDERING NUMBER, OR SPECIFY—

1. Linkage order number, TRADELINE/SUPER TRADELINE if desired.
2. Pushrod part number.

3. Adapter assembly if desired.
4. Optional damper arm if desired.

IF YOU HAVE ADDITIONAL QUESTIONS, NEED FURTHER INFORMATION, OR WOULD LIKE TO COMMENT ON OUR PRODUCTS OR SERVICES, PLEASE WRITE OR PHONE:

1. YOUR LOCAL HONEYWELL RESIDENTIAL BUILDING CONTROLS SALES OFFICE (CHECK WHITE PAGES OF PHONE DIRECTORY).
2. RESIDENTIAL AND BUILDING CONTROLS CUSTOMER SERVICE  
HONEYWELL INC., 1885 DOUGLAS DRIVE NORTH  
MINNEAPOLIS, MINNESOTA 55422 (612) 542-7500

(IN CANADA—HONEYWELL LIMITED/HONEYWELL LIMITEE, 740 ELLESMERE ROAD, SCARBOROUGH, ONTARIO M1P 2V9) INTERNATIONAL SALES AND SERVICE OFFICES IN ALL PRINCIPAL CITIES OF THE WORLD.

Consists of:

- External motor mounting bracket.
- Motor crank arm.
- Damper crank arms (3) for 1/2 inch shaft.
- Ball joints (4) for 5/16 inch pushrod.

Q605J—Linkage for connecting a Modutrol motor to a louver damper when the motor may be mounted directly on a wall or on the outside of the duct without using a mounting bracket.

Consists of:

- Motor crank arm.
- Damper crank arm for 1/2 inch diameter shaft.
- Ball joints (2) for 5/16 inch pushrod.

#### ACCESSORIES:

Pushrods—Pushrods are not included with the linkages and must be ordered separately. All pushrods are 5/16 inch in diameter.

PUSHROD ORDER NUMBER	LENGTH	
	In	mm
27520C-00021	12	304.8
27520D-00021	15	381.0
27520E-00021	18	457.2
27520G-00021	24	609.6
27520K-00021	36	914.4
27520L-00021	48	1219.2

Linkages normally require a pushrod (or rods) of a standard length, as given below, but if it is impossible to determine the necessary length at ordering, choose a long one and cut to length.

LINKAGE	PUSHROD NORMALLY USED
Q605F	27520E (18 in. [457.2 mm])
Q605G	27520D (15 in. [381.0])
Q605H	27520E (18 in. [457.2 mm])
	and
	27520K (36 in. [914.4 mm])
Q605J	27520E (18 in. [457.2 mm])

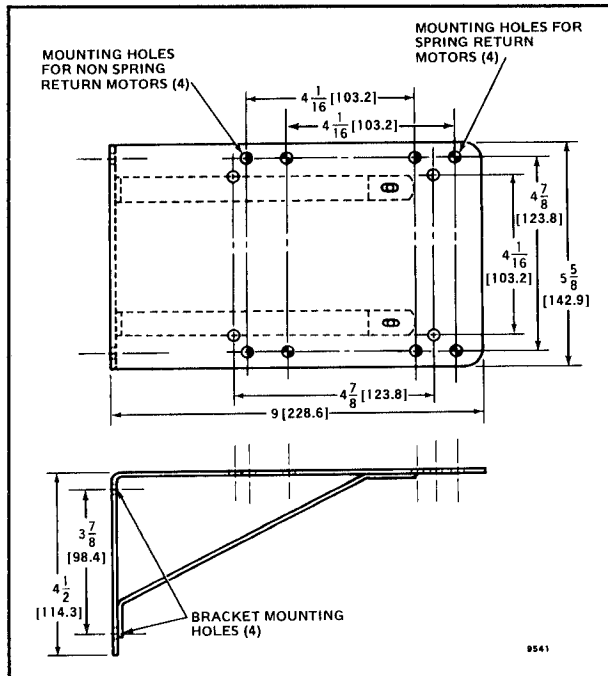


FIG. 1—DIMENSIONS IN Ins. [mm IN BRACKETS] OF 101662A EXTERNAL MOUNTING BRACKET FURNISHED WITH Q605A,D LINKAGES.

191385 Internal Mounting Kit includes right hand drive ear and bracket.

220767A Adapter Assembly—For use with 106013D crank arm. Permits simultaneous control of:

- Two dampers acting at right angles.
- Two dampers too far apart to be controlled by standard linkages.
- Three dampers, size permitting, ordinarily uncontrollable with standard linkages.

#### OPTIONAL SPECIFICATIONS:

20625B Damper Arm—For 3/8 inch diameter shafts.

27174B Damper Arm—For 7/16 inch diameter damper shafts.

27514B Damper Arm—For 3/4 inch diameter damper shafts.

DIMENSIONS: See Figs. 1-4.

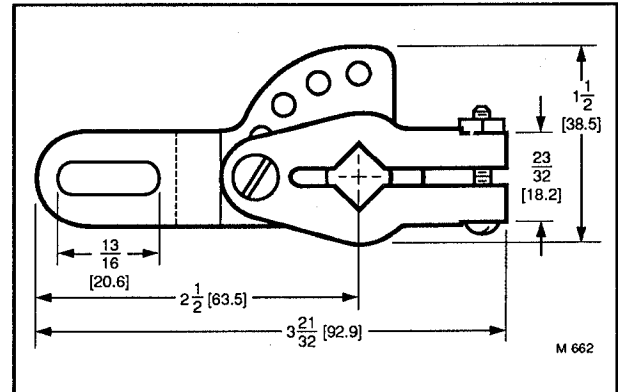


FIG. 2—DIMENSIONS IN Ins. [mm IN BRACKETS] OF 106013D MOTOR CRANK ARM FURNISHED WITH ALL LINKAGES.

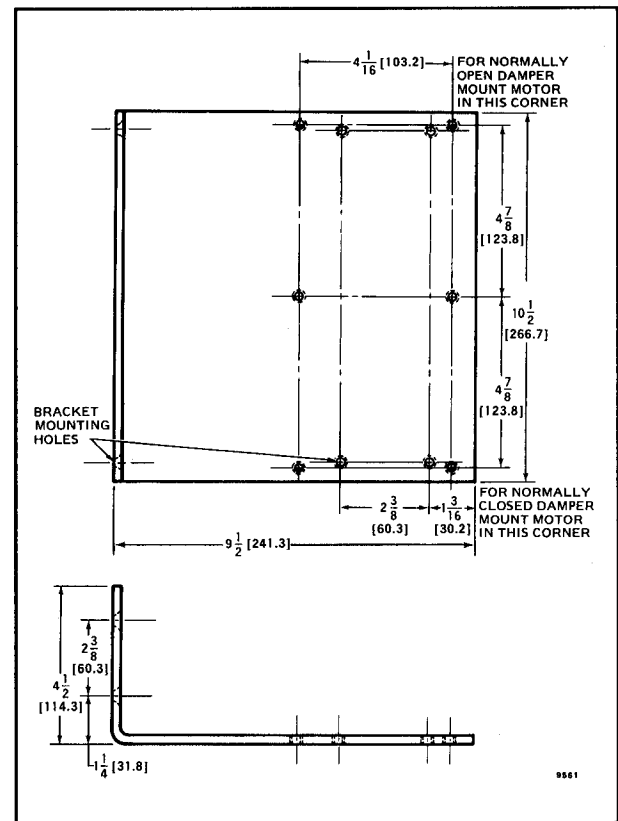


FIG. 3—DIMENSIONS IN Ins. [mm IN BRACKETS] OF 308765-00027 INTERNAL MOUNTING BRACKET FURNISHED WITH Q605G.